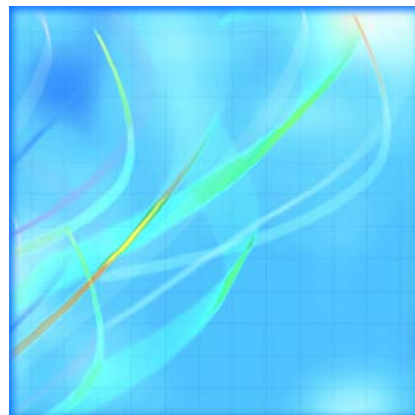


Catalogue no. 23-015-X

# Poultry and Egg Statistics

April to June 2010



Statistics  
Canada

Statistique  
Canada

Canada

## How to obtain more information

For information about this product or the wide range of services and data available from Statistics Canada, visit our website at [www.statcan.gc.ca](http://www.statcan.gc.ca), e-mail us at [infostats@statcan.gc.ca](mailto:infostats@statcan.gc.ca), or telephone us, Monday to Friday from 8:30 a.m. to 4:30 p.m., at the following numbers:

### Statistics Canada's National Contact Centre

Toll-free telephone (Canada and the United States):

|                                                             |                |
|-------------------------------------------------------------|----------------|
| Inquiries line                                              | 1-800-263-1136 |
| National telecommunications device for the hearing impaired | 1-800-363-7629 |
| Fax line                                                    | 1-877-287-4369 |

Local or international calls:

|                |                |
|----------------|----------------|
| Inquiries line | 1-613-951-8116 |
| Fax line       | 1-613-951-0581 |

### Depository Services Program

|                |                |
|----------------|----------------|
| Inquiries line | 1-800-635-7943 |
| Fax line       | 1-800-565-7757 |

## To access this product

This product, Catalogue no. 23-015-X, is available free in electronic format. To obtain a single issue, visit our website at [www.statcan.gc.ca](http://www.statcan.gc.ca) and browse by "Key resource" > "Publications."

## Standards of service to the public

Statistics Canada is committed to serving its clients in a prompt, reliable and courteous manner. To this end, Statistics Canada has developed *standards of service* that its employees observe. To obtain a copy of these service standards, please contact Statistics Canada toll-free at 1-800-263-1136. The service standards are also published on [www.statcan.gc.ca](http://www.statcan.gc.ca) under "About us" > "Providing services to Canadians."

Statistics Canada  
Agriculture Division  
Livestock Section

# Poultry and Egg Statistics

April to June 2010

Published by authority of the Minister responsible for Statistics Canada

© Minister of Industry, 2010

All rights reserved. The content of this electronic publication may be reproduced, in whole or in part, and by any means, without further permission from Statistics Canada, subject to the following conditions: that it be done solely for the purposes of private study, research, criticism, review or newspaper summary, and/or for non-commercial purposes; and that Statistics Canada be fully acknowledged as follows: Source (or "Adapted from", if appropriate): Statistics Canada, year of publication, name of product, catalogue number, volume and issue numbers, reference period and page(s). Otherwise, no part of this publication may be reproduced, stored in a retrieval system or transmitted in any form, by any means—electronic, mechanical or photocopy—or for any purposes without prior written permission of Licensing Services, Client Services Division, Statistics Canada, Ottawa, Ontario, Canada K1A 0T6.

August 2010

Catalogue no. 23-015-X, vol. 7, no. 2

ISSN 1710-3525

Frequency: Quarterly

Ottawa

Cette publication est également disponible en français.

---

#### **Note of appreciation**

*Canada owes the success of its statistical system to a long-standing partnership between Statistics Canada, the citizens of Canada, its businesses, governments and other institutions. Accurate and timely statistical information could not be produced without their continued cooperation and goodwill.*

# User information

---

## Symbols

The following standard symbols are used in Statistics Canada publications:

- . not available for any reference period
- .. not available for a specific reference period
- ... not applicable
- 0 true zero or a value rounded to zero
- 0<sup>s</sup> value rounded to 0 (zero) where there is a meaningful distinction between true zero and the value that was rounded
- p preliminary
- r revised
- x suppressed to meet the confidentiality requirements of the *Statistics Act*
- E use with caution
- F too unreliable to be published

# Table of contents

---

|                                                                   |          |
|-------------------------------------------------------------------|----------|
| <b>Highlights</b>                                                 | <b>5</b> |
| <b>Introduction</b>                                               | <b>8</b> |
| <b>Related products</b>                                           | <b>9</b> |
| <b>Statistical tables</b>                                         |          |
| 1 Production of poultry meat                                      | 11       |
| 2 Disposition of poultry meat                                     | 12       |
| 2-1 Chicken                                                       | 12       |
| 2-2 Turkey                                                        | 13       |
| 2-3 Total poultry                                                 | 14       |
| 3 Supply and disposition of poultry meat                          | 15       |
| 4 Production of eggs by province                                  | 17       |
| 4-1 Average number of layers                                      | 17       |
| 4-2 Eggs per 100 layers                                           | 18       |
| 4-3 in thousands of dozens                                        | 19       |
| 5 Disposition of eggs by province, quantity and value by province | 20       |
| 5-1 Canada                                                        | 20       |
| 5-2 Newfoundland and Labrador                                     | 21       |
| 5-3 Prince Edward Island                                          | 22       |
| 5-4 Nova Scotia                                                   | 23       |
| 5-5 New Brunswick                                                 | 24       |
| 5-6 Quebec                                                        | 25       |
| 5-7 Ontario                                                       | 26       |
| 5-8 Manitoba                                                      | 27       |
| 5-9 Saskatchewan                                                  | 28       |
| 5-10 Alberta                                                      | 29       |
| 5-11 British Columbia                                             | 30       |
| 6 Stocks of frozen eggs and edible dried eggs, Canada             | 31       |
| 7 Supply and disposition of eggs                                  | 31       |
| 8 Average prices of eggs sold for consumption in Canada by month  | 32       |

**Table of contents – continued**

9 Report of processed eggs production, Canada 32

**Data quality, concepts and methodology**

Poultry meat production and value 33  
Egg production and value 35  
Food Available - Poultry and Eggs 37

**Appendix**

I Glossary of terms 38

# Highlights

---

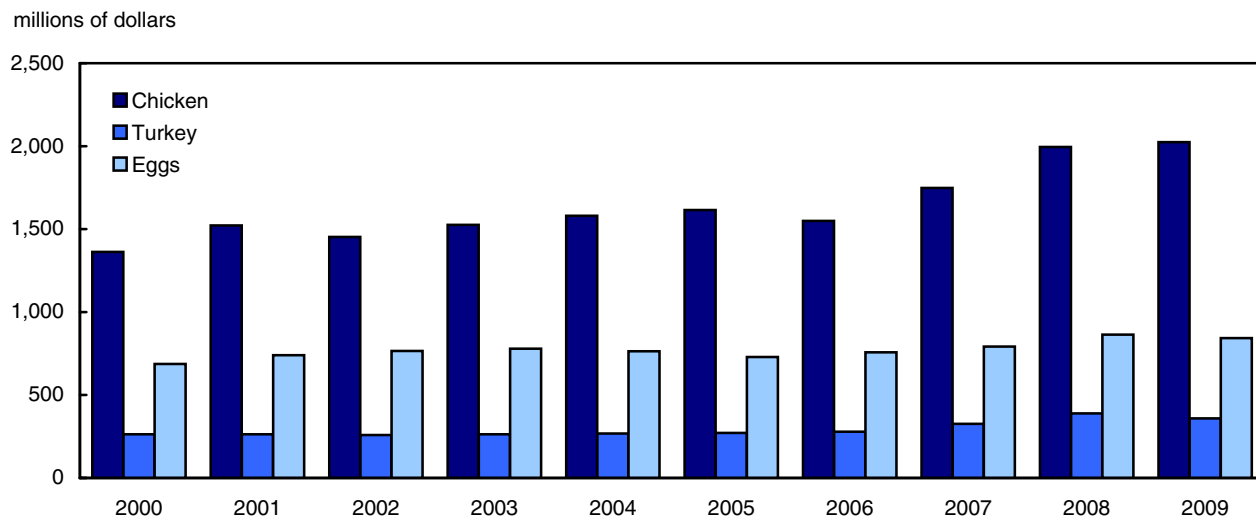
## Value of poultry products decreases

- The value of all poultry products totalled \$3.2 billion in 2009, a 0.7% decrease from 2008. Sales of poultry meat totalled \$2.4 billion in 2009. The value of egg sales decreased 2.3% from 2008 to stand at \$843.4 million.
- Canadian farmers produced 1.2 million tonnes of poultry meat in 2009. Chicken, including stewing hens, which accounts for 86% of all poultry meat produced, is down 0.4% from 2008. Turkey production stood at 167 thousand tonnes in 2009, a decrease of 7.5% from the previous year.
- The quantity of poultry available for consumption decreased 1.5% in 2009 to 13.4 kilograms per person.

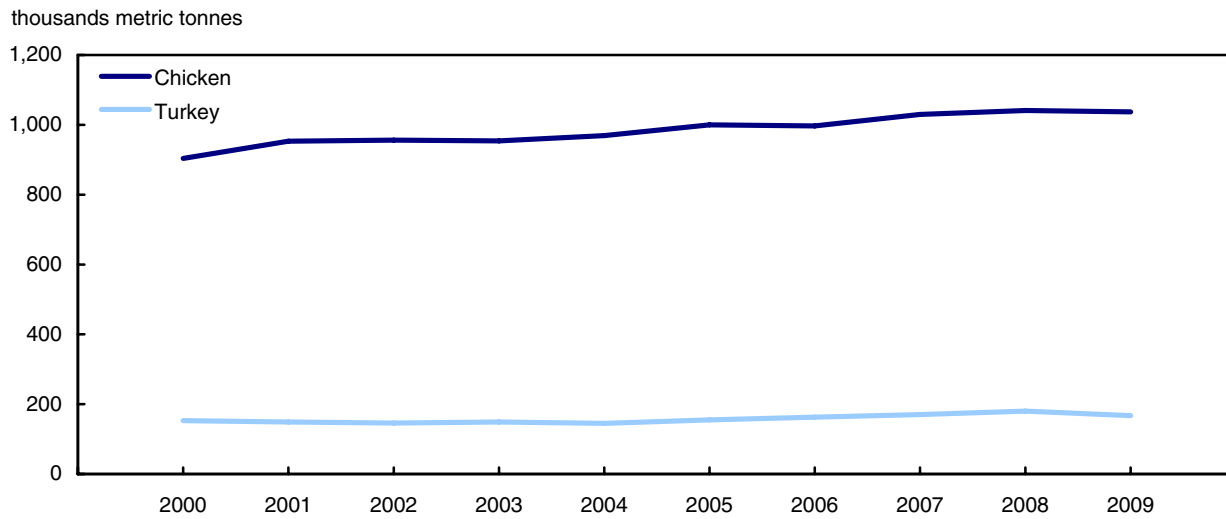
## Egg production increases in 2009

- Egg production was 620.3 million dozen, an increase of 0.5% from 2008. The central region produces over half of the eggs in Canada with Ontario producing 234.3 million dozen eggs and Quebec producing 107.6 million dozen.
- During the first 6 months of 2010, egg production totalled 314.2 million dozen, an increase of 2.0 % from the same period in 2009.
- Eggs available for consumption stood at 12.7 dozen eggs per capita in 2009, down 0.8% from last year.

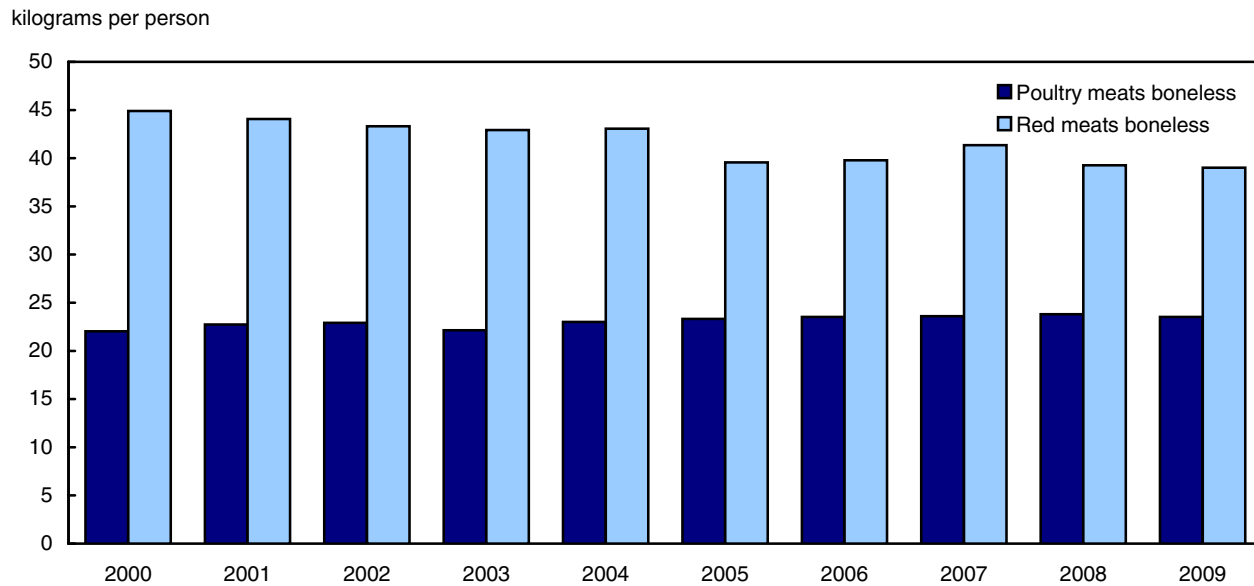
**Chart 1**  
**Value of poultry products, Canada, 2000 to 2009**



**Chart 2**  
**Poultry meat production, Canada 2000 to 2009**

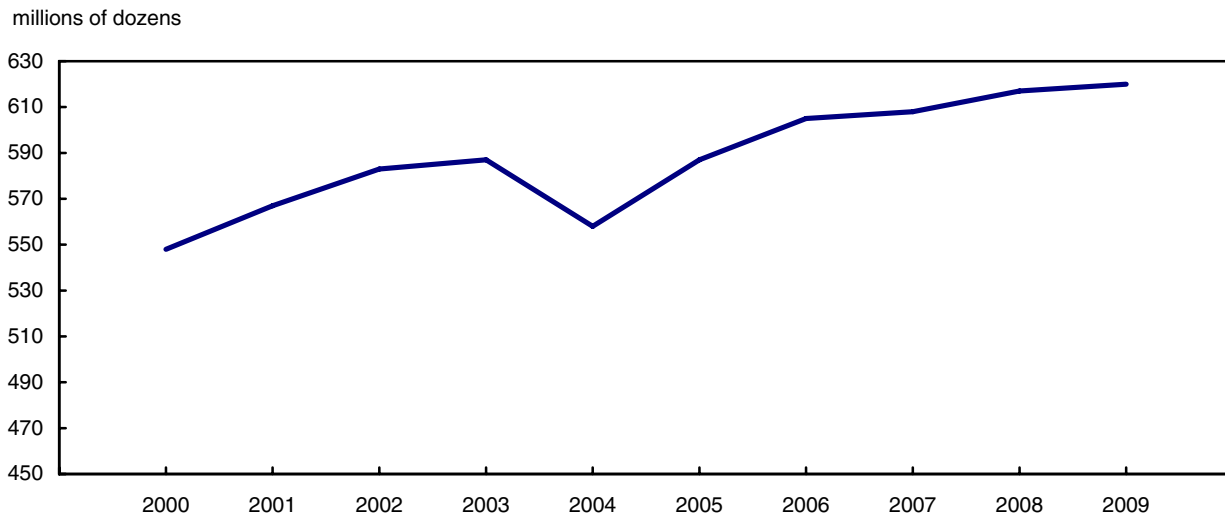


**Chart 3**  
**Quantity of meats available for consumption, Canada, 2000 to 2009**

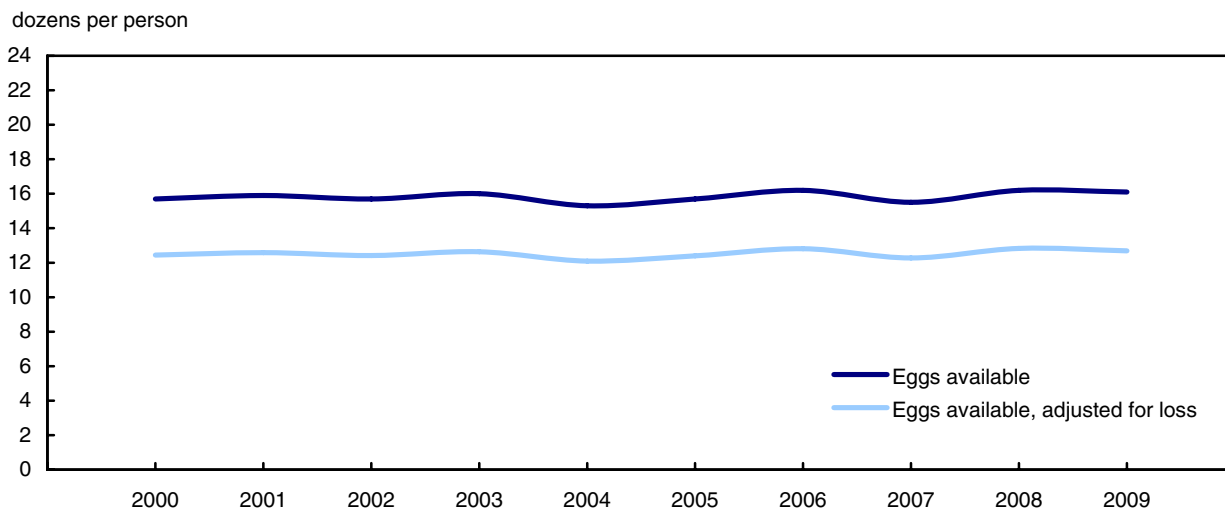




**Chart 4**  
**Production of eggs, Canada, 2000 to 2009**



**Chart 5**  
**Quantity of eggs available for consumption, Canada, 2000 to 2009**



## Introduction

---

This publication provides data on the production, supply and disposition and value of poultry meat and eggs. Also included are data on the average price of eggs sold for table consumption, the food available and the food available, adjusted for loss of poultry meats and eggs, and the production and stocks of processed eggs.

The data presented are obtained from a variety of sources such as administrative sources and censuses. Administrative data are provided by the Canadian Egg Marketing Agency (CEMA), Agriculture and Agri-Food Canada (AAFC) and Statistics Canada. Information from Statistics Canada's Census of Agriculture and Census of Population is also used in preparing the estimates.

The data, published on a provincial basis, are used in decision making by government agencies, processors, retailers, universities, producer organizations and health institutions.

Statistics Canada has been estimating poultry meat production and value since 1951. Concepts and methods vary over time due to changes in the sector and/or the availability of data sources. Users should note the following:

- i. Production data supplied in table 7 (Supply and disposition of eggs) are compiled in May of each year and revised annually. Production and disposition data supplied in tables 4 and 5 (Disposition of eggs by province) are subject to revision throughout the year and may not compare exactly to the data in table 7 (Supply and disposition of eggs);
- ii. beginning in 1986, the quantity of eggs available for consumption is adjusted to take into consideration a loss of 1.95% of total egg production due to leakers and rejects;
- iii. also beginning in 1986, a new method is used to calculate consumption on the farm;
- iv. a negligible number of hatchery-supply eggs are sold on the table market. Since data on the amount sold are not available, it is deemed to be zero;
- v. Please note that the quantity and value of eggs sold for hatching in New Brunswick also include the quantity and value for the other Atlantic provinces.

The data series are available on CANSIM at the same time as the information appears in The Daily, Statistics Canada's official release vehicle. CANSIM, Statistics Canada's computerized database, is an information management system designed to facilitate both historical research and current analysis.

## Related products

---

### Selected publications from Statistics Canada

---

|          |                                              |
|----------|----------------------------------------------|
| 21-206-X | Statistics on income of farm operators       |
| 21-207-X | Statistics on income of farm families        |
| 21-208-X | Statistics on revenues and expenses of farms |
| 23-003-X | Production of eggs                           |

---

### Selected CANSIM tables from Statistics Canada

---

|          |                                                           |
|----------|-----------------------------------------------------------|
| 003-0017 | Supply and disposition of poultry meat and eggs in Canada |
| 003-0018 | Production, disposition and farm value of poultry meat    |
| 003-0019 | Fowl and chicken meat production, weight and farm value   |
| 003-0020 | Production and disposition of eggs                        |
| 003-0021 | Placement of chicks and turkey poults for production      |
| 003-0022 | Production and disposition of eggs                        |

---

### Selected surveys from Statistics Canada

---

|      |                                |
|------|--------------------------------|
| 3421 | Egg Producers Survey           |
| 5039 | Production of Poultry and Eggs |

---

### Selected summary tables from Statistics Canada

---

- *Production of eggs, by province*
- *Production of poultry, by province*

# Statistical tables

---

---

**Table 1**  
**Production of poultry meat**

|                                  | Birds     |         |         | Weight                 |           |           | Value                |           |           |
|----------------------------------|-----------|---------|---------|------------------------|-----------|-----------|----------------------|-----------|-----------|
|                                  | 2007      | 2008    | 2009    | 2007                   | 2008      | 2009      | 2007                 | 2008      | 2009      |
|                                  | thousands |         |         | thousands of kilograms |           |           | thousands of dollars |           |           |
| <b>Chicken</b>                   |           |         |         |                        |           |           |                      |           |           |
| Canada                           | 623,443   | 624,713 | 620,791 | 1,005,628              | 1,016,557 | 1,011,110 | 1,742,791            | 1,989,916 | 2,018,304 |
| Newfoundland and Labrador        | x         | x       | x       | x                      | x         | x         | x                    | x         | x         |
| Prince Edward Island             | x         | x       | x       | x                      | x         | x         | x                    | x         | x         |
| Nova Scotia                      | 22,150    | 21,489  | 21,456  | 34,392                 | 34,478    | 33,965    | 61,533               | 69,814    | 70,690    |
| New Brunswick                    | 18,360    | 18,420  | 16,632  | 27,672                 | 27,933    | 26,842    | 50,117               | 58,719    | 57,331    |
| Quebec                           | 164,682   | 166,085 | 166,519 | 270,321                | 276,194   | 277,681   | 465,077              | 536,241   | 548,502   |
| Ontario                          | 197,625   | 197,874 | 197,057 | 329,407                | 331,094   | 330,231   | 567,120              | 643,543   | 654,073   |
| Manitoba                         | 29,342    | 29,336  | 29,761  | 43,071                 | 43,568    | 43,797    | 74,308               | 83,526    | 85,880    |
| Saskatchewan                     | 25,520    | 25,611  | 25,699  | 41,009                 | 39,647    | 38,939    | 71,141               | 78,526    | 78,693    |
| Alberta                          | 54,693    | 54,100  | 53,659  | 88,434                 | 89,360    | 89,391    | 152,242              | 172,419   | 176,611   |
| British Columbia                 | 99,183    | 99,859  | 98,401  | 154,315                | 156,975   | 153,326   | 273,456              | 317,919   | 316,262   |
| <b>Stewing hen</b>               |           |         |         |                        |           |           |                      |           |           |
| Canada                           | 16,937    | 16,119  | 17,499  | 24,499                 | 24,684    | 26,122    | 4,873                | 5,255     | 5,211     |
| Newfoundland and Labrador        | x         | x       | x       | x                      | x         | x         | x                    | x         | x         |
| Prince Edward Island             | x         | x       | x       | x                      | x         | x         | x                    | x         | x         |
| Nova Scotia                      | 93        | 41      | 114     | 263                    | 108       | 231       | 128                  | 39        | 59        |
| New Brunswick                    | 216       | 233     | 323     | 294                    | 469       | 671       | 91                   | 141       | 185       |
| Quebec                           | 4,741     | 4,760   | 5,232   | 6,795                  | 7,808     | 7,659     | 2,148                | 2,423     | 2,178     |
| Ontario                          | 8,804     | 7,982   | 8,517   | 11,469                 | 10,668    | 11,417    | 1,002                | 1,005     | 1,143     |
| Manitoba                         | 180       | 165     | 177     | 478                    | 461       | 507       | 3                    | 4         | 3         |
| Saskatchewan                     | 140       | 85      | 97      | 333                    | 238       | 285       | 28                   | 23        | 27        |
| Alberta                          | 407       | 385     | 545     | 1,189                  | 1,021     | 1,433     | 103                  | 97        | 148       |
| British Columbia                 | 2,356     | 2,467   | 2,495   | 3,676                  | 3,912     | 3,918     | 1,370                | 1,524     | 1,468     |
| <b>Total Chicken<sup>1</sup></b> |           |         |         |                        |           |           |                      |           |           |
| Canada                           | 640,380   | 640,831 | 638,290 | 1,030,127              | 1,041,241 | 1,037,232 | 1,747,664            | 1,995,171 | 2,023,515 |
| Newfoundland and Labrador        | x         | x       | x       | x                      | x         | x         | x                    | x         | x         |
| Prince Edward Island             | x         | x       | x       | x                      | x         | x         | x                    | x         | x         |
| Nova Scotia                      | 22,243    | 21,530  | 21,570  | 34,655                 | 34,586    | 34,195    | 61,660               | 69,853    | 70,748    |
| New Brunswick                    | 18,576    | 18,652  | 16,955  | 27,966                 | 28,401    | 27,513    | 50,208               | 58,860    | 57,516    |
| Quebec                           | 169,424   | 170,846 | 171,752 | 277,117                | 284,002   | 285,340   | 467,225              | 538,663   | 550,680   |
| Ontario                          | 206,429   | 205,856 | 205,573 | 340,877                | 341,761   | 341,649   | 568,122              | 644,548   | 655,215   |
| Manitoba                         | 29,521    | 29,501  | 29,938  | 43,548                 | 44,029    | 44,304    | 74,311               | 83,529    | 85,883    |
| Saskatchewan                     | 25,660    | 25,696  | 25,795  | 41,342                 | 39,884    | 39,223    | 71,169               | 78,549    | 78,720    |
| Alberta                          | 55,100    | 54,486  | 54,203  | 89,623                 | 90,381    | 90,824    | 152,345              | 172,516   | 176,759   |
| British Columbia                 | 101,539   | 102,327 | 100,896 | 157,992                | 160,887   | 157,244   | 274,826              | 319,444   | 317,730   |
| <b>Turkey</b>                    |           |         |         |                        |           |           |                      |           |           |
| Canada                           | 21,861    | 22,857  | 21,648  | 169,686                | 179,982   | 166,503   | 325,978              | 388,678   | 359,346   |
| Newfoundland and Labrador        | x         | x       | x       | x                      | x         | x         | x                    | x         | x         |
| Prince Edward Island             | x         | x       | x       | x                      | x         | x         | x                    | x         | x         |
| Nova Scotia                      | 779       | 921     | 606     | 3,736                  | 4,392     | 3,013     | 7,319                | 9,631     | 6,737     |
| New Brunswick                    | 409       | 407     | 415     | 3,256                  | 3,399     | 3,203     | 5,965                | 7,002     | 6,645     |
| Quebec                           | 4,476     | 4,689   | 4,814   | 33,488                 | 35,548    | 37,084    | 63,069               | 75,765    | 79,313    |
| Ontario                          | 9,271     | 9,503   | 9,236   | 75,773                 | 79,061    | 74,418    | 145,208              | 170,545   | 160,915   |
| Manitoba                         | 1,602     | 1,638   | 1,565   | 11,959                 | 12,206    | 10,491    | 22,401               | 25,707    | 22,041    |
| Saskatchewan                     | 870       | 977     | 802     | 6,025                  | 6,282     | 5,143     | 11,947               | 13,875    | 11,269    |
| Alberta                          | 1,654     | 1,772   | 1,555   | 14,091                 | 16,318    | 13,013    | 28,061               | 36,285    | 28,614    |
| British Columbia                 | 2,793     | 2,946   | 2,649   | 21,316                 | 22,734    | 20,097    | 41,926               | 49,773    | 43,723    |
| <b>Total poultry</b>             |           |         |         |                        |           |           |                      |           |           |
| Canada                           | 662,241   | 663,688 | 659,938 | 1,199,813              | 1,221,223 | 1,203,735 | 2,073,641            | 2,383,849 | 2,382,862 |
| Newfoundland and Labrador        | x         | x       | x       | x                      | x         | x         | x                    | x         | x         |
| Prince Edward Island             | x         | x       | x       | x                      | x         | x         | x                    | x         | x         |
| Nova Scotia                      | 23,022    | 22,451  | 22,177  | 38,391                 | 38,978    | 37,208    | 68,980               | 79,483    | 77,485    |
| New Brunswick                    | 18,985    | 19,059  | 17,370  | 31,222                 | 31,800    | 30,716    | 56,173               | 65,862    | 64,161    |
| Quebec                           | 173,900   | 175,534 | 176,566 | 310,605                | 319,549   | 322,424   | 530,293              | 614,428   | 629,993   |
| Ontario                          | 215,700   | 215,359 | 214,809 | 416,650                | 420,823   | 416,067   | 713,329              | 815,093   | 816,130   |
| Manitoba                         | 31,124    | 31,139  | 31,504  | 55,507                 | 56,235    | 54,795    | 96,712               | 109,237   | 107,924   |
| Saskatchewan                     | 26,530    | 26,673  | 26,597  | 47,366                 | 46,166    | 44,366    | 83,116               | 92,424    | 89,989    |
| Alberta                          | 56,753    | 56,257  | 55,758  | 103,714                | 106,699   | 103,837   | 180,405              | 208,801   | 205,373   |
| British Columbia                 | 104,332   | 105,272 | 103,545 | 179,308                | 183,621   | 177,341   | 316,752              | 369,217   | 361,454   |

1. Includes stewing hen.

**Table 2-1**  
**Disposition of poultry meat — Chicken <sup>1</sup>**

|                                 | Birds     |         |         | Weight                 |           |           | Value                |           |           |
|---------------------------------|-----------|---------|---------|------------------------|-----------|-----------|----------------------|-----------|-----------|
|                                 | 2007      | 2008    | 2009    | 2007                   | 2008      | 2009      | 2007                 | 2008      | 2009      |
|                                 | thousands |         |         | thousands of kilograms |           |           | thousands of dollars |           |           |
| <b>Sold</b>                     |           |         |         |                        |           |           |                      |           |           |
| Canada                          | 639,980   | 640,433 | 637,893 | 1,029,187              | 1,040,301 | 1,036,292 | 1,746,316            | 1,993,635 | 2,021,950 |
| Newfoundland and Labrador       | x         | x       | x       | x                      | x         | x         | x                    | x         | x         |
| Prince Edward Island            | x         | x       | x       | x                      | x         | x         | x                    | x         | x         |
| Nova Scotia                     | 22,235    | 21,523  | 21,563  | 34,638                 | 34,569    | 34,178    | 61,632               | 69,822    | 70,717    |
| New Brunswick                   | 18,573    | 18,650  | 16,953  | 27,962                 | 28,397    | 27,509    | 50,203               | 58,854    | 57,510    |
| Quebec                          | 169,397   | 170,820 | 171,726 | 277,054                | 283,938   | 285,277   | 467,127              | 538,555   | 550,570   |
| Ontario                         | 206,328   | 205,754 | 205,472 | 340,662                | 341,546   | 341,434   | 567,816              | 644,201   | 654,862   |
| Manitoba                        | 29,477    | 29,459  | 29,895  | 43,425                 | 43,906    | 44,180    | 74,134               | 83,322    | 85,672    |
| Saskatchewan                    | 25,612    | 25,647  | 25,748  | 41,224                 | 39,767    | 39,106    | 71,004               | 78,361    | 78,528    |
| Alberta                         | 54,991    | 54,377  | 54,096  | 89,351                 | 90,109    | 90,552    | 151,953              | 172,071   | 176,305   |
| British Columbia                | 101,482   | 102,268 | 100,838 | 157,874                | 160,769   | 157,127   | 274,668              | 319,261   | 317,544   |
| <b>Home consumption</b>         |           |         |         |                        |           |           |                      |           |           |
| Canada                          | 400       | 399     | 396     | 940                    | 940       | 940       | 1,348                | 1,536     | 1,565     |
| Newfoundland and Labrador       | x         | x       | x       | x                      | x         | x         | x                    | x         | x         |
| Prince Edward Island            | x         | x       | x       | x                      | x         | x         | x                    | x         | x         |
| Nova Scotia                     | 8         | 7       | 7       | 17                     | 17        | 17        | 29                   | 31        | 32        |
| New Brunswick                   | 2         | 2       | 2       | 4                      | 4         | 4         | 6                    | 6         | 6         |
| Quebec                          | 26        | 25      | 26      | 63                     | 63        | 63        | 98                   | 109       | 110       |
| Ontario                         | 101       | 101     | 102     | 215                    | 215       | 215       | 306                  | 347       | 354       |
| Manitoba                        | 45        | 42      | 43      | 123                    | 123       | 123       | 178                  | 207       | 211       |
| Saskatchewan                    | 48        | 49      | 47      | 118                    | 118       | 118       | 164                  | 188       | 192       |
| Alberta                         | 109       | 109     | 107     | 272                    | 272       | 272       | 391                  | 445       | 455       |
| British Columbia                | 57        | 59      | 58      | 117                    | 117       | 117       | 158                  | 183       | 186       |
| <b>Disposition <sup>2</sup></b> |           |         |         |                        |           |           |                      |           |           |
| Canada                          | 640,380   | 640,831 | 638,290 | 1,030,127              | 1,041,241 | 1,037,232 | 1,747,664            | 1,995,171 | 2,023,515 |
| Newfoundland and Labrador       | x         | x       | x       | x                      | x         | x         | x                    | x         | x         |
| Prince Edward Island            | x         | x       | x       | x                      | x         | x         | x                    | x         | x         |
| Nova Scotia                     | 22,243    | 21,530  | 21,570  | 34,655                 | 34,586    | 34,195    | 61,660               | 69,853    | 70,748    |
| New Brunswick                   | 18,576    | 18,652  | 16,955  | 27,966                 | 28,401    | 27,513    | 50,208               | 58,860    | 57,516    |
| Quebec                          | 169,424   | 170,846 | 171,752 | 277,117                | 284,002   | 285,340   | 467,225              | 538,663   | 550,680   |
| Ontario                         | 206,429   | 205,856 | 205,573 | 340,877                | 341,761   | 341,649   | 568,122              | 644,548   | 655,215   |
| Manitoba                        | 29,521    | 29,501  | 29,938  | 43,548                 | 44,029    | 44,304    | 74,311               | 83,529    | 85,883    |
| Saskatchewan                    | 25,660    | 25,696  | 25,795  | 41,342                 | 39,884    | 39,223    | 71,169               | 78,549    | 78,720    |
| Alberta                         | 55,100    | 54,486  | 54,203  | 89,623                 | 90,381    | 90,824    | 152,345              | 172,516   | 176,759   |
| British Columbia                | 101,539   | 102,327 | 100,896 | 157,992                | 160,887   | 157,244   | 274,826              | 319,444   | 317,730   |

1. Includes stewing hen.

2. Includes sold and home consumption.

**Table 2-2**  
**Disposition of poultry meat — Turkey**

|                                 | Birds     |        |        | Weight                 |         |         | Value                |         |         |
|---------------------------------|-----------|--------|--------|------------------------|---------|---------|----------------------|---------|---------|
|                                 | 2007      | 2008   | 2009   | 2007                   | 2008    | 2009    | 2007                 | 2008    | 2009    |
|                                 | thousands |        |        | thousands of kilograms |         |         | thousands of dollars |         |         |
| <b>Sold</b>                     |           |        |        |                        |         |         |                      |         |         |
| Canada                          | 21,846    | 22,842 | 21,633 | 169,575                | 179,872 | 166,392 | 325,763              | 388,438 | 359,106 |
| Newfoundland and Labrador       | x         | x      | x      | x                      | x       | x       | x                    | x       | x       |
| Prince Edward Island            | x         | x      | x      | x                      | x       | x       | x                    | x       | x       |
| Nova Scotia                     | 779       | 921    | 606    | 3,735                  | 4,390   | 3,011   | 7,316                | 9,627   | 6,733   |
| New Brunswick                   | 409       | 406    | 415    | 3,255                  | 3,398   | 3,202   | 5,963                | 7,000   | 6,643   |
| Quebec                          | 4,475     | 4,688  | 4,814  | 33,482                 | 35,542  | 37,078  | 63,057               | 75,752  | 79,299  |
| Ontario                         | 9,269     | 9,500  | 9,233  | 75,751                 | 79,039  | 74,396  | 145,165              | 170,497 | 160,867 |
| Manitoba                        | 1,601     | 1,636  | 1,563  | 11,945                 | 12,192  | 10,478  | 22,376               | 25,679  | 22,013  |
| Saskatchewan                    | 867       | 974    | 798    | 6,004                  | 6,261   | 5,122   | 11,906               | 13,829  | 11,223  |
| Alberta                         | 1,650     | 1,768  | 1,551  | 14,056                 | 16,283  | 12,978  | 27,992               | 36,208  | 28,537  |
| British Columbia                | 2,792     | 2,944  | 2,648  | 21,306                 | 22,724  | 20,087  | 41,907               | 49,752  | 43,702  |
| <b>Home consumption</b>         |           |        |        |                        |         |         |                      |         |         |
| Canada                          | 14        | 14     | 15     | 111                    | 111     | 111     | 215                  | 240     | 240     |
| Newfoundland and Labrador       | x         | x      | x      | x                      | x       | x       | x                    | x       | x       |
| Prince Edward Island            | x         | x      | x      | x                      | x       | x       | x                    | x       | x       |
| Nova Scotia                     | 0         | 0      | 0      | 2                      | 2       | 2       | 3                    | 4       | 4       |
| New Brunswick                   | 0         | 0      | 0      | 1                      | 1       | 1       | 2                    | 2       | 2       |
| Quebec                          | 1         | 1      | 1      | 6                      | 6       | 6       | 11                   | 13      | 13      |
| Ontario                         | 3         | 3      | 3      | 22                     | 22      | 22      | 42                   | 48      | 48      |
| Manitoba                        | 2         | 2      | 2      | 14                     | 14      | 14      | 25                   | 28      | 28      |
| Saskatchewan                    | 3         | 3      | 3      | 21                     | 21      | 21      | 42                   | 46      | 46      |
| Alberta                         | 4         | 4      | 4      | 35                     | 35      | 35      | 69                   | 77      | 77      |
| British Columbia                | 1         | 1      | 1      | 10                     | 10      | 10      | 19                   | 21      | 21      |
| <b>Disposition <sup>1</sup></b> |           |        |        |                        |         |         |                      |         |         |
| Canada                          | 21,861    | 22,857 | 21,648 | 169,686                | 179,982 | 166,503 | 325,978              | 388,678 | 359,346 |
| Newfoundland and Labrador       | x         | x      | x      | x                      | x       | x       | x                    | x       | x       |
| Prince Edward Island            | x         | x      | x      | x                      | x       | x       | x                    | x       | x       |
| Nova Scotia                     | 779       | 921    | 606    | 3,736                  | 4,392   | 3,013   | 7,319                | 9,631   | 6,737   |
| New Brunswick                   | 409       | 407    | 415    | 3,256                  | 3,399   | 3,203   | 5,965                | 7,002   | 6,645   |
| Quebec                          | 4,476     | 4,689  | 4,814  | 33,488                 | 35,548  | 37,084  | 63,069               | 75,765  | 79,313  |
| Ontario                         | 9,271     | 9,503  | 9,236  | 75,773                 | 79,061  | 74,418  | 145,208              | 170,545 | 160,915 |
| Manitoba                        | 1,602     | 1,638  | 1,565  | 11,959                 | 12,206  | 10,491  | 22,401               | 25,707  | 22,041  |
| Saskatchewan                    | 870       | 977    | 802    | 6,025                  | 6,282   | 5,143   | 11,947               | 13,875  | 11,269  |
| Alberta                         | 1,654     | 1,772  | 1,555  | 14,091                 | 16,318  | 13,013  | 28,061               | 36,285  | 28,614  |
| British Columbia                | 2,793     | 2,946  | 2,649  | 21,316                 | 22,734  | 20,097  | 41,926               | 49,773  | 43,723  |

1. Includes sold and home consumption.

**Table 2-3**  
**Disposition of poultry meat — Total poultry**

|                                 | Birds     |         |         | Weight                 |           |           | Value                |           |           |
|---------------------------------|-----------|---------|---------|------------------------|-----------|-----------|----------------------|-----------|-----------|
|                                 | 2007      | 2008    | 2009    | 2007                   | 2008      | 2009      | 2007                 | 2008      | 2009      |
|                                 | thousands |         |         | thousands of kilograms |           |           | thousands of dollars |           |           |
| <b>Sold</b>                     |           |         |         |                        |           |           |                      |           |           |
| Canada                          | 661,827   | 663,275 | 659,527 | 1,198,762              | 1,220,173 | 1,202,684 | 2,072,078            | 2,382,074 | 2,381,056 |
| Newfoundland and Labrador       | x         | x       | x       | x                      | x         | x         | x                    | x         | x         |
| Prince Edward Island            | x         | x       | x       | x                      | x         | x         | x                    | x         | x         |
| Nova Scotia                     | 23,014    | 22,444  | 22,169  | 38,373                 | 38,960    | 37,189    | 68,948               | 79,449    | 77,450    |
| New Brunswick                   | 18,982    | 19,057  | 17,368  | 31,217                 | 31,795    | 30,711    | 56,166               | 65,854    | 64,153    |
| Quebec                          | 173,873   | 175,508 | 176,539 | 310,536                | 319,480   | 322,355   | 530,184              | 614,307   | 629,869   |
| Ontario                         | 215,596   | 215,255 | 214,705 | 416,413                | 420,586   | 415,830   | 712,981              | 814,698   | 815,729   |
| Manitoba                        | 31,077    | 31,095  | 31,458  | 55,370                 | 56,098    | 54,658    | 96,509               | 109,001   | 107,685   |
| Saskatchewan                    | 26,479    | 26,620  | 26,547  | 47,228                 | 46,028    | 44,228    | 82,910               | 92,190    | 89,751    |
| Alberta                         | 56,640    | 56,145  | 55,647  | 103,407                | 106,392   | 103,530   | 179,945              | 208,279   | 204,842   |
| British Columbia                | 104,274   | 105,212 | 103,486 | 179,181                | 183,494   | 177,214   | 316,574              | 369,012   | 361,246   |
| <b>Home consumption</b>         |           |         |         |                        |           |           |                      |           |           |
| Canada                          | 414       | 413     | 411     | 1,051                  | 1,051     | 1,051     | 1,563                | 1,776     | 1,806     |
| Newfoundland and Labrador       | x         | x       | x       | x                      | x         | x         | x                    | x         | x         |
| Prince Edward Island            | x         | x       | x       | x                      | x         | x         | x                    | x         | x         |
| Nova Scotia                     | 8         | 8       | 7       | 18                     | 18        | 18        | 32                   | 35        | 35        |
| New Brunswick                   | 2         | 2       | 2       | 5                      | 5         | 5         | 7                    | 8         | 8         |
| Quebec                          | 27        | 26      | 27      | 69                     | 69        | 69        | 110                  | 122       | 123       |
| Ontario                         | 104       | 104     | 104     | 237                    | 237       | 237       | 348                  | 395       | 401       |
| Manitoba                        | 46        | 44      | 45      | 137                    | 137       | 137       | 203                  | 235       | 240       |
| Saskatchewan                    | 51        | 52      | 50      | 139                    | 139       | 139       | 206                  | 234       | 238       |
| Alberta                         | 113       | 113     | 112     | 307                    | 307       | 307       | 460                  | 522       | 531       |
| British Columbia                | 58        | 60      | 59      | 127                    | 127       | 127       | 177                  | 204       | 207       |
| <b>Disposition <sup>1</sup></b> |           |         |         |                        |           |           |                      |           |           |
| Canada                          | 662,241   | 663,688 | 659,938 | 1,199,813              | 1,221,223 | 1,203,735 | 2,073,641            | 2,383,849 | 2,382,862 |
| Newfoundland and Labrador       | x         | x       | x       | x                      | x         | x         | x                    | x         | x         |
| Prince Edward Island            | x         | x       | x       | x                      | x         | x         | x                    | x         | x         |
| Nova Scotia                     | 23,022    | 22,451  | 22,177  | 38,391                 | 38,978    | 37,208    | 68,980               | 79,483    | 77,485    |
| New Brunswick                   | 18,985    | 19,059  | 17,370  | 31,222                 | 31,800    | 30,716    | 56,173               | 65,862    | 64,161    |
| Quebec                          | 173,900   | 175,534 | 176,566 | 310,605                | 319,549   | 322,424   | 530,293              | 614,428   | 629,993   |
| Ontario                         | 215,700   | 215,359 | 214,809 | 416,650                | 420,823   | 416,067   | 713,329              | 815,093   | 816,130   |
| Manitoba                        | 31,124    | 31,139  | 31,504  | 55,507                 | 56,235    | 54,795    | 96,712               | 109,237   | 107,924   |
| Saskatchewan                    | 26,530    | 26,673  | 26,597  | 47,366                 | 46,166    | 44,366    | 83,116               | 92,424    | 89,989    |
| Alberta                         | 56,753    | 56,257  | 55,758  | 103,714                | 106,699   | 103,837   | 180,405              | 208,801   | 205,373   |
| British Columbia                | 104,332   | 105,272 | 103,545 | 179,308                | 183,621   | 177,341   | 316,752              | 369,217   | 361,454   |

1. Includes sold and home consumption.



**Table 3**  
**Supply and disposition of poultry meat**

|                                                           | 2005      | 2006      | 2007      | 2008      | 2009      |
|-----------------------------------------------------------|-----------|-----------|-----------|-----------|-----------|
| tonnes                                                    |           |           |           |           |           |
| <b>Chicken</b>                                            |           |           |           |           |           |
| Production                                                | 977,415   | 971,877   | 1,005,628 | 1,016,557 | 1,011,110 |
| Beginning stocks                                          | 33,069    | 38,361    | 28,218    | 36,554    | 37,457    |
| Imports                                                   | 132,875   | 151,149   | 169,489   | 171,887   | 173,205   |
| Total supply                                              | 1,143,359 | 1,161,387 | 1,203,335 | 1,224,998 | 1,221,772 |
| Exports                                                   | 91,932    | 99,357    | 121,862   | 132,820   | 126,988   |
| Ending stocks                                             | 38,361    | 28,218    | 36,554    | 37,457    | 37,372    |
| Net supply                                                | 1,013,066 | 1,033,812 | 1,044,919 | 1,054,721 | 1,057,412 |
| kilograms                                                 |           |           |           |           |           |
| Food available per person, eviscerated basis              | 31.4      | 31.7      | 31.7      | 31.7      | 31.3      |
| Food available per person, boneless weight                | 18.9      | 19.1      | 19.1      | 19.0      | 18.9      |
| Food available per person, adjusted for loss <sup>2</sup> | 10.6      | 10.7      | 10.7      | 10.6      | 10.5      |
| tonnes                                                    |           |           |           |           |           |
| <b>Stewing hen</b>                                        |           |           |           |           |           |
| Production                                                | 22,690    | 25,509    | 24,499    | 24,684    | 26,122    |
| Beginning stocks                                          | 838       | 1,256     | 946       | 1,445     | 2,411     |
| Imports                                                   | 46,450    | 48,386    | 58,267    | 66,387    | 63,975    |
| Total supply                                              | 69,978    | 75,151    | 83,712    | 92,516    | 92,508    |
| Exports                                                   | 22,983    | 24,839    | 30,466    | 33,205    | 31,747    |
| Ending stocks                                             | 1,256     | 946       | 1,445     | 2,411     | 1,015     |
| Net supply                                                | 45,739    | 49,366    | 51,801    | 56,900    | 59,746    |
| kilograms                                                 |           |           |           |           |           |
| Food available per person, eviscerated basis              | 1.4       | 1.5       | 1.6       | 1.7       | 1.8       |
| Food available per person, boneless weight                | 0.8       | 0.9       | 1.0       | 1.0       | 1.1       |
| Food available per person, adjusted for loss <sup>2</sup> | 0.5       | 0.5       | 0.5       | 0.6       | 0.6       |
| tonnes                                                    |           |           |           |           |           |
| <b>Total Chicken <sup>1</sup></b>                         |           |           |           |           |           |
| Production                                                | 1,000,105 | 997,386   | 1,030,127 | 1,041,241 | 1,037,232 |
| Beginning stocks                                          | 33,907    | 39,617    | 29,164    | 37,999    | 39,868    |
| Imports                                                   | 179,325   | 199,535   | 227,756   | 238,274   | 237,180   |
| Total supply                                              | 1,213,337 | 1,236,538 | 1,287,047 | 1,317,514 | 1,314,280 |
| Exports                                                   | 114,915   | 124,196   | 152,328   | 166,025   | 158,735   |
| Ending stocks                                             | 39,617    | 29,164    | 37,999    | 39,868    | 38,387    |
| Net supply                                                | 1,058,805 | 1,083,178 | 1,096,720 | 1,111,621 | 1,117,158 |
| kilograms                                                 |           |           |           |           |           |
| Food available per person, eviscerated basis              | 32.8      | 33.3      | 33.3      | 33.4      | 33.1      |
| Food available per person, boneless weight                | 19.8      | 20.0      | 20.0      | 20.1      | 19.9      |
| Food available per person, adjusted for loss <sup>2</sup> | 11.0      | 11.2      | 11.2      | 11.2      | 11.1      |
| tonnes                                                    |           |           |           |           |           |
| <b>Turkey</b>                                             |           |           |           |           |           |
| Production                                                | 155,426   | 163,425   | 169,686   | 179,982   | 166,503   |
| Beginning stocks                                          | 11,731    | 12,411    | 12,834    | 15,415    | 22,241    |
| Imports                                                   | 14,896    | 8,999     | 8,046     | 9,063     | 7,945     |
| Total supply                                              | 182,053   | 184,835   | 190,566   | 204,460   | 196,689   |
| Exports                                                   | 24,521    | 27,165    | 26,493    | 24,804    | 24,849    |
| Ending stocks                                             | 12,411    | 12,834    | 15,415    | 22,241    | 18,336    |
| Net supply                                                | 145,121   | 144,836   | 148,658   | 157,415   | 153,504   |
| kilograms                                                 |           |           |           |           |           |
| Food available per person, eviscerated basis              | 4.5       | 4.5       | 4.5       | 4.7       | 4.6       |
| Food available per person, boneless weight                | 3.6       | 3.5       | 3.6       | 3.7       | 3.6       |
| Food available per person, adjusted for loss <sup>2</sup> | 2.2       | 2.2       | 2.3       | 2.4       | 2.3       |

See notes at the end of the table.

Table 3 – continued

Supply and disposition of poultry meat

|                                                           | 2005      | 2006      | 2007      | 2008      | 2009      |
|-----------------------------------------------------------|-----------|-----------|-----------|-----------|-----------|
|                                                           | tonnes    |           |           |           |           |
| <b>Total poultry meat</b>                                 |           |           |           |           |           |
| Production                                                | 1,155,531 | 1,160,811 | 1,199,813 | 1,221,223 | 1,203,735 |
| Beginning stocks                                          | 45,638    | 52,028    | 41,998    | 53,414    | 62,109    |
| Imports                                                   | 194,221   | 208,534   | 235,802   | 247,337   | 245,125   |
| Total supply                                              | 1,395,390 | 1,421,373 | 1,477,613 | 1,521,974 | 1,510,969 |
| Exports                                                   | 139,436   | 151,361   | 178,821   | 190,829   | 183,584   |
| Ending stocks                                             | 52,028    | 41,998    | 53,414    | 62,109    | 56,723    |
| Net supply                                                | 1,203,926 | 1,228,014 | 1,245,378 | 1,269,036 | 1,270,662 |
|                                                           | kilograms |           |           |           |           |
| Food available per person, eviscerated basis              | 37.3      | 37.7      | 37.8      | 38.1      | 37.7      |
| Food available per person, boneless weight                | 23.3      | 23.5      | 23.6      | 23.8      | 23.5      |
| Food available per person, adjusted for loss <sup>2</sup> | 13.3      | 13.4      | 13.4      | 13.6      | 13.4      |

1. Includes stewing hen.

2. Experimental, use with caution. The data have been adjusted for retail, household, cooking and plate loss.

**Table 4-1**  
**Production of eggs by province — Average number of layers**

|                                  | Jan.      | Feb.   | Mar.   | Apr.   | May    | June   | July   | Aug.   | Sept.  | Oct.   | Nov.   | Dec.   | Annual average |
|----------------------------------|-----------|--------|--------|--------|--------|--------|--------|--------|--------|--------|--------|--------|----------------|
|                                  | thousands |        |        |        |        |        |        |        |        |        |        |        |                |
| <b>Newfoundland and Labrador</b> |           |        |        |        |        |        |        |        |        |        |        |        |                |
| 2008                             | 356       | 325    | 319    | 348    | 354    | 308    | 279    | 321    | 350    | 356    | 339    | 339    | 333            |
| 2009                             | 365       | 342    | 336    | 367    | 372    | 367    | 359    | 357    | 328    | 302    | 311    | 338    | 345            |
| 2010                             | 365       | 334    | 318    | 351    | 357    | 350    | ..     | ..     | ..     | ..     | ..     | ..     | ..             |
| <b>Prince Edward Island</b>      |           |        |        |        |        |        |        |        |        |        |        |        |                |
| 2008                             | 131       | 129    | 126    | 125    | 122    | 125    | 130    | 130    | 129    | 129    | 125    | 125    | 127            |
| 2009                             | 130       | 128    | 125    | 124    | 122    | 126    | 132    | 132    | 132    | 133    | 129    | 129    | 128            |
| 2010                             | 133       | 131    | 129    | 131    | 133    | 131    | ..     | ..     | ..     | ..     | ..     | ..     | ..             |
| <b>Nova Scotia</b>               |           |        |        |        |        |        |        |        |        |        |        |        |                |
| 2008                             | 752       | 750    | 755    | 747    | 699    | 664    | 687    | 733    | 747    | 747    | 736    | 736    | 730            |
| 2009                             | 749       | 745    | 749    | 742    | 694    | 713    | 778    | 778    | 762    | 765    | 756    | 757    | 749            |
| 2010                             | 770       | 774    | 783    | 779    | 775    | 772    | ..     | ..     | ..     | ..     | ..     | ..     | ..             |
| <b>New Brunswick</b>             |           |        |        |        |        |        |        |        |        |        |        |        |                |
| 2008                             | 771       | 793    | 798    | 789    | 789    | 805    | 768    | 763    | 772    | 767    | 680    | 725    | 768            |
| 2009                             | 769       | 777    | 751    | 779    | 823    | 799    | 836    | 822    | 762    | 745    | 748    | 786    | 783            |
| 2010                             | 755       | 725    | 727    | 761    | 757    | 762    | ..     | ..     | ..     | ..     | ..     | ..     | ..             |
| <b>Quebec</b>                    |           |        |        |        |        |        |        |        |        |        |        |        |                |
| 2008                             | 4,959     | 4,858  | 4,785  | 4,706  | 4,727  | 4,742  | 4,754  | 4,834  | 4,850  | 4,842  | 4,837  | 4,996  | 4,824          |
| 2009                             | 4,990     | 4,823  | 4,838  | 4,803  | 4,758  | 4,778  | 4,794  | 4,849  | 4,825  | 4,848  | 4,942  | 5,037  | 4,857          |
| 2010                             | 4,957     | 4,816  | 4,879  | 4,931  | 4,915  | 4,971  | ..     | ..     | ..     | ..     | ..     | ..     | ..             |
| <b>Ontario</b>                   |           |        |        |        |        |        |        |        |        |        |        |        |                |
| 2008                             | 9,502     | 9,536  | 9,410  | 9,386  | 9,449  | 9,401  | 9,335  | 9,371  | 9,594  | 9,733  | 9,745  | 9,766  | 9,519          |
| 2009                             | 9,790     | 9,737  | 9,674  | 9,668  | 9,659  | 9,605  | 9,643  | 9,739  | 9,772  | 9,754  | 9,731  | 9,807  | 9,715          |
| 2010                             | 9,711     | 9,618  | 9,711  | 9,777  | 9,826  | 9,891  | ..     | ..     | ..     | ..     | ..     | ..     | ..             |
| <b>Manitoba</b>                  |           |        |        |        |        |        |        |        |        |        |        |        |                |
| 2008                             | 3,016     | 2,927  | 2,927  | 2,932  | 2,928  | 2,991  | 2,985  | 2,990  | 2,953  | 2,945  | 2,944  | 2,961  | 2,958          |
| 2009                             | 3,010     | 3,001  | 2,991  | 2,988  | 2,981  | 2,992  | 2,981  | 2,968  | 2,973  | 2,977  | 2,968  | 2,968  | 2,983          |
| 2010                             | 2,980     | 2,951  | 2,981  | 3,016  | 2,998  | 2,938  | ..     | ..     | ..     | ..     | ..     | ..     | ..             |
| <b>Saskatchewan</b>              |           |        |        |        |        |        |        |        |        |        |        |        |                |
| 2008                             | 1,114     | 1,115  | 1,087  | 1,075  | 1,111  | 1,105  | 1,095  | 1,136  | 1,165  | 1,164  | 1,182  | 1,182  | 1,128          |
| 2009                             | 1,213     | 1,195  | 1,118  | 1,142  | 1,187  | 1,197  | 1,203  | 1,188  | 1,154  | 1,163  | 1,214  | 1,220  | 1,183          |
| 2010                             | 1,187     | 1,155  | 1,168  | 1,181  | 1,191  | 1,183  | ..     | ..     | ..     | ..     | ..     | ..     | ..             |
| <b>Alberta</b>                   |           |        |        |        |        |        |        |        |        |        |        |        |                |
| 2008                             | 2,273     | 2,265  | 2,277  | 2,334  | 2,362  | 2,349  | 2,346  | 2,360  | 2,364  | 2,329  | 2,316  | 2,289  | 2,322          |
| 2009                             | 2,255     | 2,232  | 2,207  | 2,224  | 2,239  | 2,252  | 2,291  | 2,300  | 2,309  | 2,330  | 2,357  | 2,377  | 2,281          |
| 2010                             | 2,345     | 2,311  | 2,322  | 2,350  | 2,370  | 2,374  | ..     | ..     | ..     | ..     | ..     | ..     | ..             |
| <b>British Columbia</b>          |           |        |        |        |        |        |        |        |        |        |        |        |                |
| 2008                             | 3,190     | 3,195  | 3,200  | 3,246  | 3,290  | 3,309  | 3,292  | 3,223  | 3,207  | 3,198  | 3,163  | 3,197  | 3,226          |
| 2009                             | 3,247     | 3,193  | 3,184  | 3,213  | 3,217  | 3,282  | 3,278  | 3,175  | 3,150  | 3,205  | 3,214  | 3,234  | 3,216          |
| 2010                             | 3,199     | 3,166  | 3,233  | 3,221  | 3,192  | 3,273  | ..     | ..     | ..     | ..     | ..     | ..     | ..             |
| <b>Canada</b>                    |           |        |        |        |        |        |        |        |        |        |        |        |                |
| 2008                             | 26,063    | 25,893 | 25,684 | 25,688 | 25,830 | 25,798 | 25,671 | 25,860 | 26,131 | 26,210 | 26,067 | 26,316 | 25,934         |
| 2009                             | 26,517    | 26,172 | 25,973 | 26,050 | 26,052 | 26,111 | 26,295 | 26,307 | 26,168 | 26,222 | 26,370 | 26,653 | 26,241         |
| 2010                             | 26,402    | 25,981 | 26,251 | 26,498 | 26,513 | 26,646 | ..     | ..     | ..     | ..     | ..     | ..     | ..             |

**Table 4-2**  
**Production of eggs by province — Eggs per 100 layers**

|                                  | Jan.   | Feb.  | Mar.  | Apr.  | May   | June  | July  | Aug.  | Sept. | Oct.  | Nov.  | Dec.  | Annual total |
|----------------------------------|--------|-------|-------|-------|-------|-------|-------|-------|-------|-------|-------|-------|--------------|
|                                  | number |       |       |       |       |       |       |       |       |       |       |       |              |
| <b>Newfoundland and Labrador</b> |        |       |       |       |       |       |       |       |       |       |       |       |              |
| 2008                             | 2,695  | 2,152 | 2,466 | 2,722 | 2,760 | 2,939 | 3,356 | 2,893 | 2,659 | 2,793 | 2,470 | 2,063 | 31,848       |
| 2009                             | 2,916  | 2,547 | 2,871 | 2,446 | 2,451 | 2,443 | 2,792 | 2,462 | 2,805 | 3,518 | 2,674 | 2,693 | 32,467       |
| 2010                             | 2,687  | 2,625 | 3,148 | 2,655 | 2,584 | 2,395 | ..    | ..    | ..    | ..    | ..    | ..    | ..           |
| <b>Prince Edward Island</b>      |        |       |       |       |       |       |       |       |       |       |       |       |              |
| 2008                             | 2,360  | 2,605 | 2,437 | 2,891 | 2,769 | 2,546 | 2,526 | 2,634 | 2,827 | 2,373 | 2,731 | 2,607 | 31,299       |
| 2009                             | 2,381  | 2,269 | 2,504 | 2,597 | 2,445 | 2,690 | 2,586 | 2,702 | 2,818 | 2,325 | 2,774 | 2,511 | 30,615       |
| 2010                             | 2,614  | 2,513 | 2,606 | 3,029 | 2,289 | 2,090 | ..    | ..    | ..    | ..    | ..    | ..    | ..           |
| <b>Nova Scotia</b>               |        |       |       |       |       |       |       |       |       |       |       |       |              |
| 2008                             | 2,564  | 2,625 | 2,710 | 2,686 | 2,761 | 2,555 | 2,738 | 2,704 | 2,607 | 2,860 | 2,317 | 2,627 | 31,751       |
| 2009                             | 2,614  | 2,485 | 2,777 | 2,726 | 2,903 | 2,634 | 2,346 | 2,561 | 2,525 | 2,787 | 2,467 | 2,808 | 31,493       |
| 2010                             | 2,642  | 2,285 | 2,647 | 2,630 | 2,204 | 2,132 | ..    | ..    | ..    | ..    | ..    | ..    | ..           |
| <b>New Brunswick</b>             |        |       |       |       |       |       |       |       |       |       |       |       |              |
| 2008                             | 1,982  | 1,898 | 2,039 | 2,254 | 2,016 | 1,959 | 2,140 | 2,162 | 2,092 | 2,115 | 2,107 | 2,331 | 25,066       |
| 2009                             | 1,953  | 1,965 | 2,198 | 2,315 | 2,043 | 1,992 | 2,077 | 2,044 | 1,956 | 2,115 | 2,088 | 2,369 | 25,109       |
| 2010                             | 1,978  | 1,965 | 2,174 | 2,171 | 2,222 | 2,171 | ..    | ..    | ..    | ..    | ..    | ..    | ..           |
| <b>Quebec</b>                    |        |       |       |       |       |       |       |       |       |       |       |       |              |
| 2008                             | 2,288  | 2,178 | 2,224 | 2,220 | 2,207 | 2,174 | 2,393 | 2,208 | 2,080 | 2,239 | 2,123 | 2,284 | 26,620       |
| 2009                             | 2,233  | 2,080 | 2,305 | 2,217 | 2,247 | 2,220 | 2,276 | 2,259 | 2,108 | 2,281 | 2,161 | 2,204 | 26,592       |
| 2010                             | 2,205  | 2,168 | 2,358 | 2,227 | 2,263 | 2,181 | ..    | ..    | ..    | ..    | ..    | ..    | ..           |
| <b>Ontario</b>                   |        |       |       |       |       |       |       |       |       |       |       |       |              |
| 2008                             | 2,417  | 2,155 | 2,515 | 2,465 | 2,421 | 2,577 | 2,353 | 2,674 | 2,385 | 2,597 | 2,347 | 2,579 | 29,485       |
| 2009                             | 2,380  | 2,212 | 2,269 | 2,422 | 2,487 | 2,444 | 2,357 | 2,483 | 2,268 | 2,538 | 2,559 | 2,519 | 28,937       |
| 2010                             | 2,415  | 2,262 | 2,439 | 2,396 | 2,529 | 2,558 | ..    | ..    | ..    | ..    | ..    | ..    | ..           |
| <b>Manitoba</b>                  |        |       |       |       |       |       |       |       |       |       |       |       |              |
| 2008                             | 2,854  | 2,626 | 2,696 | 2,616 | 2,732 | 2,793 | 2,832 | 2,785 | 2,667 | 2,680 | 2,519 | 2,739 | 32,550       |
| 2009                             | 3,124  | 2,489 | 2,728 | 2,528 | 2,578 | 2,727 | 2,688 | 2,701 | 2,808 | 2,651 | 2,561 | 2,772 | 32,360       |
| 2010                             | 3,184  | 2,552 | 2,771 | 2,598 | 2,624 | 2,834 | ..    | ..    | ..    | ..    | ..    | ..    | ..           |
| <b>Saskatchewan</b>              |        |       |       |       |       |       |       |       |       |       |       |       |              |
| 2008                             | 2,281  | 2,239 | 2,370 | 2,310 | 2,649 | 2,235 | 2,344 | 2,373 | 2,308 | 2,218 | 2,422 | 2,255 | 27,989       |
| 2009                             | 2,429  | 2,298 | 2,453 | 2,377 | 2,455 | 2,144 | 2,037 | 2,176 | 2,531 | 2,007 | 2,156 | 2,556 | 27,606       |
| 2010                             | 2,280  | 2,429 | 2,527 | 2,265 | 2,422 | 2,330 | ..    | ..    | ..    | ..    | ..    | ..    | ..           |
| <b>Alberta</b>                   |        |       |       |       |       |       |       |       |       |       |       |       |              |
| 2008                             | 2,297  | 1,997 | 2,039 | 1,658 | 2,537 | 2,008 | 1,986 | 1,921 | 2,169 | 2,247 | 1,977 | 2,140 | 24,977       |
| 2009                             | 2,110  | 1,994 | 2,201 | 2,140 | 2,244 | 2,079 | 2,048 | 2,137 | 2,042 | 2,058 | 2,022 | 2,122 | 25,191       |
| 2010                             | 2,224  | 2,201 | 2,203 | 2,023 | 1,998 | 2,007 | ..    | ..    | ..    | ..    | ..    | ..    | ..           |
| <b>British Columbia</b>          |        |       |       |       |       |       |       |       |       |       |       |       |              |
| 2008                             | 2,342  | 2,201 | 2,284 | 2,304 | 2,419 | 2,237 | 2,352 | 2,290 | 2,216 | 2,321 | 2,181 | 2,248 | 27,398       |
| 2009                             | 2,448  | 2,187 | 2,335 | 2,302 | 2,396 | 2,286 | 2,332 | 2,286 | 2,208 | 2,371 | 2,220 | 2,306 | 27,681       |
| 2010                             | 2,407  | 2,208 | 2,373 | 2,274 | 2,417 | 2,234 | ..    | ..    | ..    | ..    | ..    | ..    | ..           |
| <b>Canada</b>                    |        |       |       |       |       |       |       |       |       |       |       |       |              |
| 2008                             | 2,412  | 2,216 | 2,394 | 2,343 | 2,440 | 2,402 | 2,398 | 2,458 | 2,320 | 2,453 | 2,272 | 2,436 | 28,546       |
| 2009                             | 2,423  | 2,207 | 2,360 | 2,362 | 2,416 | 2,363 | 2,333 | 2,388 | 2,292 | 2,422 | 2,363 | 2,434 | 28,366       |
| 2010                             | 2,437  | 2,271 | 2,445 | 2,341 | 2,406 | 2,391 | ..    | ..    | ..    | ..    | ..    | ..    | ..           |

**Table 4-3**  
**Production of eggs by province in thousands of dozens**

|                                  | Jan.      | Feb.   | Mar.   | Apr.   | May    | June   | July   | Aug.   | Sept.  | Oct.   | Nov.   | Dec.   | Annual total |
|----------------------------------|-----------|--------|--------|--------|--------|--------|--------|--------|--------|--------|--------|--------|--------------|
|                                  | thousands |        |        |        |        |        |        |        |        |        |        |        |              |
| <b>Newfoundland and Labrador</b> |           |        |        |        |        |        |        |        |        |        |        |        |              |
| 2008                             | 799       | 582    | 656    | 790    | 813    | 753    | 780    | 773    | 775    | 828    | 698    | 582    | 8,830        |
| 2009                             | 887       | 725    | 804    | 747    | 759    | 747    | 836    | 732    | 767    | 884    | 694    | 758    | 9,340        |
| 2010                             | 817       | 730    | 834    | 775    | 769    | 699    | ..     | ..     | ..     | ..     | ..     | ..     | ..           |
| <b>Prince Edward Island</b>      |           |        |        |        |        |        |        |        |        |        |        |        |              |
| 2008                             | 257       | 279    | 255    | 301    | 282    | 265    | 274    | 284    | 304    | 256    | 285    | 272    | 3,313        |
| 2009                             | 257       | 242    | 261    | 269    | 248    | 282    | 285    | 297    | 311    | 258    | 298    | 270    | 3,276        |
| 2010                             | 290       | 274    | 281    | 331    | 253    | 229    | ..     | ..     | ..     | ..     | ..     | ..     | ..           |
| <b>Nova Scotia</b>               |           |        |        |        |        |        |        |        |        |        |        |        |              |
| 2008                             | 1,607     | 1,641  | 1,705  | 1,672  | 1,609  | 1,414  | 1,568  | 1,651  | 1,624  | 1,780  | 1,422  | 1,611  | 19,302       |
| 2009                             | 1,565     | 1,542  | 1,734  | 1,685  | 1,679  | 1,566  | 1,522  | 1,660  | 1,603  | 1,778  | 1,554  | 1,771  | 19,657       |
| 2010                             | 1,695     | 1,474  | 1,727  | 1,708  | 1,424  | 1,372  | ..     | ..     | ..     | ..     | ..     | ..     | ..           |
| <b>New Brunswick</b>             |           |        |        |        |        |        |        |        |        |        |        |        |              |
| 2008                             | 1,272     | 1,255  | 1,356  | 1,483  | 1,325  | 1,314  | 1,369  | 1,374  | 1,345  | 1,352  | 1,194  | 1,408  | 16,047       |
| 2009                             | 1,251     | 1,273  | 1,376  | 1,504  | 1,401  | 1,327  | 1,446  | 1,400  | 1,242  | 1,313  | 1,301  | 1,552  | 16,386       |
| 2010                             | 1,245     | 1,188  | 1,317  | 1,376  | 1,401  | 1,379  | ..     | ..     | ..     | ..     | ..     | ..     | ..           |
| <b>Quebec</b>                    |           |        |        |        |        |        |        |        |        |        |        |        |              |
| 2008                             | 9,455     | 8,817  | 8,867  | 8,705  | 8,695  | 8,589  | 9,480  | 8,895  | 8,408  | 9,034  | 8,556  | 9,511  | 107,011      |
| 2009                             | 9,284     | 8,362  | 9,292  | 8,875  | 8,910  | 8,840  | 9,094  | 9,128  | 8,477  | 9,216  | 8,900  | 9,253  | 107,631      |
| 2010                             | 9,107     | 8,703  | 9,586  | 9,149  | 9,269  | 9,036  | ..     | ..     | ..     | ..     | ..     | ..     | ..           |
| <b>Ontario</b>                   |           |        |        |        |        |        |        |        |        |        |        |        |              |
| 2008                             | 19,138    | 17,128 | 19,719 | 19,279 | 19,066 | 20,192 | 18,301 | 20,884 | 19,065 | 21,061 | 19,063 | 20,992 | 233,886      |
| 2009                             | 19,413    | 17,945 | 18,291 | 19,515 | 20,015 | 19,561 | 18,939 | 20,152 | 18,467 | 20,631 | 20,755 | 20,587 | 234,270      |
| 2010                             | 19,543    | 18,127 | 19,734 | 19,525 | 20,708 | 21,082 | ..     | ..     | ..     | ..     | ..     | ..     | ..           |
| <b>Manitoba</b>                  |           |        |        |        |        |        |        |        |        |        |        |        |              |
| 2008                             | 7,173     | 6,406  | 6,576  | 6,392  | 6,665  | 6,961  | 7,044  | 6,941  | 6,564  | 6,577  | 6,179  | 6,759  | 80,237       |
| 2009                             | 7,837     | 6,224  | 6,801  | 6,295  | 6,403  | 6,799  | 6,679  | 6,680  | 6,958  | 6,577  | 6,333  | 6,856  | 80,443       |
| 2010                             | 7,906     | 6,277  | 6,884  | 6,529  | 6,555  | 6,940  | ..     | ..     | ..     | ..     | ..     | ..     | ..           |
| <b>Saskatchewan</b>              |           |        |        |        |        |        |        |        |        |        |        |        |              |
| 2008                             | 2,117     | 2,081  | 2,147  | 2,070  | 2,453  | 2,058  | 2,139  | 2,247  | 2,241  | 2,151  | 2,385  | 2,222  | 26,310       |
| 2009                             | 2,456     | 2,289  | 2,285  | 2,262  | 2,428  | 2,139  | 2,042  | 2,155  | 2,434  | 1,945  | 2,181  | 2,599  | 27,215       |
| 2010                             | 2,256     | 2,338  | 2,460  | 2,229  | 2,404  | 2,297  | ..     | ..     | ..     | ..     | ..     | ..     | ..           |
| <b>Alberta</b>                   |           |        |        |        |        |        |        |        |        |        |        |        |              |
| 2008                             | 4,351     | 3,770  | 3,869  | 3,226  | 4,993  | 3,932  | 3,884  | 3,777  | 4,273  | 4,360  | 3,816  | 4,082  | 48,331       |
| 2009                             | 3,965     | 3,709  | 4,049  | 3,966  | 4,187  | 3,902  | 3,910  | 4,097  | 3,929  | 3,997  | 3,972  | 4,204  | 47,884       |
| 2010                             | 4,346     | 4,238  | 4,263  | 3,962  | 3,947  | 3,971  | ..     | ..     | ..     | ..     | ..     | ..     | ..           |
| <b>British Columbia</b>          |           |        |        |        |        |        |        |        |        |        |        |        |              |
| 2008                             | 6,227     | 5,859  | 6,090  | 6,233  | 6,632  | 6,167  | 6,453  | 6,149  | 5,923  | 6,185  | 5,749  | 5,988  | 73,656       |
| 2009                             | 6,623     | 5,819  | 6,197  | 6,164  | 6,423  | 6,252  | 6,369  | 6,049  | 5,795  | 6,332  | 5,947  | 6,214  | 74,184       |
| 2010                             | 6,415     | 5,825  | 6,394  | 6,105  | 6,429  | 6,094  | ..     | ..     | ..     | ..     | ..     | ..     | ..           |
| <b>Canada</b>                    |           |        |        |        |        |        |        |        |        |        |        |        |              |
| 2008                             | 52,397    | 47,818 | 51,240 | 50,150 | 52,531 | 51,645 | 51,291 | 52,976 | 50,520 | 53,583 | 49,345 | 53,427 | 616,922      |
| 2009                             | 53,538    | 48,130 | 51,088 | 51,282 | 52,455 | 51,413 | 51,121 | 52,347 | 49,983 | 52,931 | 51,934 | 54,064 | 620,286      |
| 2010                             | 53,620    | 49,172 | 53,478 | 51,689 | 53,159 | 53,097 | ..     | ..     | ..     | ..     | ..     | ..     | ..           |

**Table 5-1**  
**Disposition of eggs by province, quantity and value by province — Canada**

|                                           | Jan.   | Feb.   | Mar.   | Apr.   | May    | June   | July   | Aug.   | Sept.  | Oct.   | Nov.   | Dec.   | Annual total |
|-------------------------------------------|--------|--------|--------|--------|--------|--------|--------|--------|--------|--------|--------|--------|--------------|
| quantity, in thousands of dozens          |        |        |        |        |        |        |        |        |        |        |        |        |              |
| <b>Sold for consumption</b>               |        |        |        |        |        |        |        |        |        |        |        |        |              |
| 2008                                      | 46,223 | 41,822 | 44,923 | 44,024 | 46,211 | 45,627 | 45,044 | 46,796 | 44,189 | 47,385 | 43,299 | 47,172 | 542,714      |
| 2009                                      | 47,056 | 42,405 | 44,821 | 45,282 | 46,339 | 45,148 | 44,850 | 46,354 | 43,924 | 46,824 | 45,850 | 47,772 | 546,625      |
| 2010                                      | 47,795 | 43,517 | 47,014 | 45,617 | 46,897 | 46,817 | ..     | ..     | ..     | ..     | ..     | ..     | ..           |
| <b>Sold for hatching</b>                  |        |        |        |        |        |        |        |        |        |        |        |        |              |
| 2008                                      | 5,037  | 4,945  | 5,201  | 5,029  | 5,179  | 4,894  | 5,129  | 5,030  | 5,229  | 5,036  | 4,967  | 5,096  | 60,774       |
| 2009                                      | 5,320  | 4,670  | 5,153  | 4,884  | 4,976  | 5,145  | 5,158  | 4,856  | 4,967  | 4,958  | 4,953  | 5,122  | 60,162       |
| 2010                                      | 4,662  | 4,579  | 5,304  | 4,949  | 5,108  | 5,129  | ..     | ..     | ..     | ..     | ..     | ..     | ..           |
| <b>Home consumption</b>                   |        |        |        |        |        |        |        |        |        |        |        |        |              |
| 2008                                      | 117    | 117    | 117    | 117    | 117    | 117    | 117    | 117    | 117    | 117    | 117    | 117    | 1,404        |
| 2009                                      | 117    | 117    | 117    | 117    | 117    | 117    | 117    | 117    | 117    | 117    | 117    | 117    | 1,404        |
| 2010                                      | 117    | 117    | 117    | 117    | 117    | 117    | ..     | ..     | ..     | ..     | ..     | ..     | ..           |
| <b>Leakers and rejects</b>                |        |        |        |        |        |        |        |        |        |        |        |        |              |
| 2008                                      | 1,021  | 933    | 1,000  | 979    | 1,025  | 1,007  | 1,001  | 1,033  | 985    | 1,045  | 962    | 1,042  | 12,031       |
| 2009                                      | 1,044  | 938    | 997    | 1,000  | 1,023  | 1,003  | 996    | 1,021  | 975    | 1,032  | 1,014  | 1,054  | 12,095       |
| 2010                                      | 1,046  | 960    | 1,043  | 1,007  | 1,037  | 1,035  | ..     | ..     | ..     | ..     | ..     | ..     | ..           |
| <b>Total disposition of eggs</b>          |        |        |        |        |        |        |        |        |        |        |        |        |              |
| 2008                                      | 52,397 | 47,818 | 51,240 | 50,150 | 52,531 | 51,645 | 51,291 | 52,976 | 50,520 | 53,583 | 49,345 | 53,427 | 616,923      |
| 2009                                      | 53,538 | 48,130 | 51,088 | 51,282 | 52,455 | 51,413 | 51,121 | 52,347 | 49,983 | 52,931 | 51,934 | 54,064 | 620,286      |
| 2010                                      | 53,620 | 49,172 | 53,478 | 51,689 | 53,159 | 53,097 | ..     | ..     | ..     | ..     | ..     | ..     | ..           |
| value, in thousands of dollars            |        |        |        |        |        |        |        |        |        |        |        |        |              |
| <b>Sold for consumption</b>               |        |        |        |        |        |        |        |        |        |        |        |        |              |
| 2008                                      | 50,223 | 45,933 | 49,538 | 49,324 | 52,343 | 51,425 | 51,824 | 55,067 | 52,181 | 56,256 | 50,149 | 54,507 | 618,770      |
| 2009                                      | 52,325 | 46,392 | 48,815 | 49,497 | 50,006 | 48,533 | 48,432 | 50,622 | 47,763 | 51,300 | 50,163 | 52,178 | 596,025      |
| 2010                                      | 51,440 | 50,255 | 54,296 | 52,730 | 54,107 | 53,977 | ..     | ..     | ..     | ..     | ..     | ..     | ..           |
| <b>Sold for hatching</b>                  |        |        |        |        |        |        |        |        |        |        |        |        |              |
| 2008                                      | 18,765 | 19,142 | 20,289 | 19,838 | 20,657 | 19,629 | 21,085 | 20,708 | 21,551 | 20,737 | 20,026 | 20,428 | 242,855      |
| 2009                                      | 21,374 | 18,853 | 20,964 | 19,892 | 20,313 | 21,064 | 21,336 | 19,830 | 20,442 | 20,286 | 20,293 | 20,889 | 245,535      |
| 2010                                      | 18,969 | 18,577 | 21,488 | 19,797 | 20,452 | 20,567 | ..     | ..     | ..     | ..     | ..     | ..     | ..           |
| <b>Home consumption</b>                   |        |        |        |        |        |        |        |        |        |        |        |        |              |
| 2008                                      | 155    | 157    | 154    | 155    | 156    | 156    | 159    | 163    | 161    | 162    | 159    | 159    | 1,896        |
| 2009                                      | 154    | 152    | 152    | 152    | 147    | 147    | 147    | 148    | 148    | 148    | 148    | 148    | 1,795        |
| 2010                                      | 147    | 157    | 157    | 157    | 156    | 157    | ..     | ..     | ..     | ..     | ..     | ..     | ..           |
| <b>Total value of disposition of eggs</b> |        |        |        |        |        |        |        |        |        |        |        |        |              |
| 2008                                      | 69,143 | 65,233 | 69,981 | 69,317 | 73,157 | 71,210 | 73,068 | 75,937 | 73,893 | 77,154 | 70,334 | 75,093 | 863,520      |
| 2009                                      | 73,853 | 65,397 | 69,932 | 69,541 | 70,466 | 69,744 | 69,915 | 70,601 | 68,354 | 71,734 | 70,604 | 73,216 | 843,355      |
| 2010                                      | 70,557 | 68,988 | 75,941 | 72,685 | 74,715 | 74,701 | ..     | ..     | ..     | ..     | ..     | ..     | ..           |

**Table 5-2**  
**Disposition of eggs by province, quantity and value by province — Newfoundland and Labrador**

|                                           | Jan.  | Feb.  | Mar.  | Apr.  | May   | June  | July  | Aug.  | Sept. | Oct.  | Nov.  | Dec.  | Annual total |
|-------------------------------------------|-------|-------|-------|-------|-------|-------|-------|-------|-------|-------|-------|-------|--------------|
| quantity, in thousands of dozens          |       |       |       |       |       |       |       |       |       |       |       |       |              |
| <b>Sold for consumption</b>               |       |       |       |       |       |       |       |       |       |       |       |       |              |
| 2008                                      | 784   | 571   | 643   | 775   | 797   | 738   | 764   | 758   | 760   | 812   | 684   | 571   | 8,656        |
| 2009                                      | 870   | 711   | 788   | 732   | 745   | 732   | 819   | 717   | 752   | 866   | 680   | 743   | 9,156        |
| 2010                                      | 800   | 716   | 818   | 760   | 753   | 685   | ..    | ..    | ..    | ..    | ..    | ..    | ..           |
| <b>Sold for hatching</b>                  |       |       |       |       |       |       |       |       |       |       |       |       |              |
| 2008                                      | 0     | 0     | 0     | 0     | 0     | 0     | 0     | 0     | 0     | 0     | 0     | 0     | 0            |
| 2009                                      | 0     | 0     | 0     | 0     | 0     | 0     | 0     | 0     | 0     | 0     | 0     | 0     | 0            |
| 2010                                      | 0     | 0     | 0     | 0     | 0     | 0     | ..    | ..    | ..    | ..    | ..    | ..    | ..           |
| <b>Home consumption</b>                   |       |       |       |       |       |       |       |       |       |       |       |       |              |
| 2008                                      | 0     | 0     | 0     | 0     | 0     | 0     | 0     | 0     | 0     | 0     | 0     | 0     | 2            |
| 2009                                      | 0     | 0     | 0     | 0     | 0     | 0     | 0     | 0     | 0     | 0     | 0     | 0     | 2            |
| 2010                                      | 0     | 0     | 0     | 0     | 0     | 0     | ..    | ..    | ..    | ..    | ..    | ..    | ..           |
| <b>Leakers and rejects</b>                |       |       |       |       |       |       |       |       |       |       |       |       |              |
| 2008                                      | 16    | 11    | 13    | 15    | 16    | 15    | 15    | 15    | 15    | 16    | 14    | 11    | 172          |
| 2009                                      | 17    | 14    | 16    | 15    | 15    | 15    | 16    | 14    | 15    | 17    | 14    | 15    | 182          |
| 2010                                      | 16    | 14    | 16    | 15    | 15    | 14    | ..    | ..    | ..    | ..    | ..    | ..    | ..           |
| <b>Total disposition of eggs</b>          |       |       |       |       |       |       |       |       |       |       |       |       |              |
| 2008                                      | 800   | 583   | 656   | 790   | 813   | 753   | 780   | 773   | 775   | 828   | 698   | 582   | 8,831        |
| 2009                                      | 887   | 725   | 804   | 747   | 760   | 747   | 836   | 732   | 767   | 884   | 694   | 758   | 9,340        |
| 2010                                      | 817   | 730   | 834   | 776   | 769   | 699   | ..    | ..    | ..    | ..    | ..    | ..    | ..           |
| value, in thousands of dollars            |       |       |       |       |       |       |       |       |       |       |       |       |              |
| <b>Sold for consumption</b>               |       |       |       |       |       |       |       |       |       |       |       |       |              |
| 2008                                      | 1,057 | 776   | 881   | 1,061 | 1,099 | 1,047 | 1,111 | 1,129 | 1,158 | 1,206 | 1,010 | 832   | 12,365       |
| 2009                                      | 1,186 | 963   | 1,076 | 993   | 1,009 | 998   | 1,133 | 1,007 | 1,071 | 1,224 | 962   | 1,051 | 12,671       |
| 2010                                      | 1,123 | 1,076 | 1,221 | 1,120 | 1,113 | 1,012 | ..    | ..    | ..    | ..    | ..    | ..    | ..           |
| <b>Sold for hatching</b>                  |       |       |       |       |       |       |       |       |       |       |       |       |              |
| 2008                                      | 0     | 0     | 0     | 0     | 0     | 0     | 0     | 0     | 0     | 0     | 0     | 0     | 0            |
| 2009                                      | 0     | 0     | 0     | 0     | 0     | 0     | 0     | 0     | 0     | 0     | 0     | 0     | 0            |
| 2010                                      | 0     | 0     | 0     | 0     | 0     | 0     | ..    | ..    | ..    | ..    | ..    | ..    | ..           |
| <b>Home consumption</b>                   |       |       |       |       |       |       |       |       |       |       |       |       |              |
| 2008                                      | 0     | 0     | 0     | 0     | 0     | 0     | 0     | 0     | 0     | 0     | 0     | 0     | 4            |
| 2009                                      | 0     | 0     | 0     | 0     | 0     | 0     | 0     | 0     | 0     | 0     | 0     | 0     | 4            |
| 2010                                      | 0     | 0     | 0     | 0     | 0     | 0     | ..    | ..    | ..    | ..    | ..    | ..    | ..           |
| <b>Total value of disposition of eggs</b> |       |       |       |       |       |       |       |       |       |       |       |       |              |
| 2008                                      | 1,057 | 776   | 881   | 1,061 | 1,099 | 1,048 | 1,112 | 1,129 | 1,158 | 1,206 | 1,010 | 832   | 12,369       |
| 2009                                      | 1,186 | 963   | 1,076 | 993   | 1,009 | 998   | 1,133 | 1,007 | 1,071 | 1,225 | 962   | 1,051 | 12,675       |
| 2010                                      | 1,124 | 1,076 | 1,222 | 1,120 | 1,113 | 1,012 | ..    | ..    | ..    | ..    | ..    | ..    | ..           |

**Table 5-3**  
**Disposition of eggs by province, quantity and value by province — Prince Edward Island**

|                                           | Jan. | Feb. | Mar. | Apr. | May | June | July | Aug. | Sept. | Oct. | Nov. | Dec. | Annual total |
|-------------------------------------------|------|------|------|------|-----|------|------|------|-------|------|------|------|--------------|
| quantity, in thousands of dozens          |      |      |      |      |     |      |      |      |       |      |      |      |              |
| <b>Sold for consumption</b>               |      |      |      |      |     |      |      |      |       |      |      |      |              |
| 2008                                      | 251  | 273  | 250  | 295  | 276 | 259  | 268  | 278  | 298   | 250  | 279  | 266  | 3,243        |
| 2009                                      | 252  | 237  | 255  | 263  | 243 | 276  | 279  | 291  | 304   | 253  | 292  | 264  | 3,207        |
| 2010                                      | 284  | 268  | 275  | 325  | 247 | 224  | ..   | ..   | ..    | ..   | ..   | ..   | ..           |
| <b>Sold for hatching</b>                  |      |      |      |      |     |      |      |      |       |      |      |      |              |
| 2008                                      | 0    | 0    | 0    | 0    | 0   | 0    | 0    | 0    | 0     | 0    | 0    | 0    | 0            |
| 2009                                      | 0    | 0    | 0    | 0    | 0   | 0    | 0    | 0    | 0     | 0    | 0    | 0    | 0            |
| 2010                                      | 0    | 0    | 0    | 0    | 0   | 0    | ..   | ..   | ..    | ..   | ..   | ..   | ..           |
| <b>Home consumption</b>                   |      |      |      |      |     |      |      |      |       |      |      |      |              |
| 2008                                      | 0    | 0    | 0    | 0    | 0   | 0    | 0    | 0    | 0     | 0    | 0    | 0    | 5            |
| 2009                                      | 0    | 0    | 0    | 0    | 0   | 0    | 0    | 0    | 0     | 0    | 0    | 0    | 5            |
| 2010                                      | 0    | 0    | 0    | 0    | 0   | 0    | ..   | ..   | ..    | ..   | ..   | ..   | ..           |
| <b>Leakers and rejects</b>                |      |      |      |      |     |      |      |      |       |      |      |      |              |
| 2008                                      | 5    | 5    | 5    | 6    | 6   | 5    | 5    | 6    | 6     | 5    | 6    | 5    | 65           |
| 2009                                      | 5    | 5    | 5    | 5    | 5   | 6    | 6    | 6    | 6     | 5    | 6    | 5    | 64           |
| 2010                                      | 6    | 5    | 6    | 7    | 5   | 5    | ..   | ..   | ..    | ..   | ..   | ..   | ..           |
| <b>Total disposition of eggs</b>          |      |      |      |      |     |      |      |      |       |      |      |      |              |
| 2008                                      | 257  | 279  | 255  | 301  | 282 | 265  | 274  | 284  | 304   | 256  | 285  | 272  | 3,313        |
| 2009                                      | 257  | 242  | 261  | 269  | 248 | 282  | 285  | 297  | 311   | 258  | 298  | 270  | 3,276        |
| 2010                                      | 290  | 274  | 281  | 331  | 253 | 229  | ..   | ..   | ..    | ..   | ..   | ..   | ..           |
| value, in thousands of dollars            |      |      |      |      |     |      |      |      |       |      |      |      |              |
| <b>Sold for consumption</b>               |      |      |      |      |     |      |      |      |       |      |      |      |              |
| 2008                                      | 288  | 321  | 296  | 348  | 332 | 314  | 333  | 353  | 386   | 319  | 350  | 332  | 3,970        |
| 2009                                      | 302  | 282  | 304  | 313  | 289 | 329  | 339  | 353  | 369   | 304  | 351  | 313  | 3,847        |
| 2010                                      | 333  | 340  | 350  | 403  | 303 | 274  | ..   | ..   | ..    | ..   | ..   | ..   | ..           |
| <b>Sold for hatching</b>                  |      |      |      |      |     |      |      |      |       |      |      |      |              |
| 2008                                      | 0    | 0    | 0    | 0    | 0   | 0    | 0    | 0    | 0     | 0    | 0    | 0    | 0            |
| 2009                                      | 0    | 0    | 0    | 0    | 0   | 0    | 0    | 0    | 0     | 0    | 0    | 0    | 0            |
| 2010                                      | 0    | 0    | 0    | 0    | 0   | 0    | ..   | ..   | ..    | ..   | ..   | ..   | ..           |
| <b>Home consumption</b>                   |      |      |      |      |     |      |      |      |       |      |      |      |              |
| 2008                                      | 1    | 1    | 1    | 1    | 1   | 1    | 1    | 1    | 1     | 1    | 1    | 1    | 8            |
| 2009                                      | 1    | 1    | 1    | 1    | 1   | 1    | 1    | 1    | 1     | 1    | 1    | 1    | 7            |
| 2010                                      | 1    | 1    | 1    | 1    | 1   | 1    | ..   | ..   | ..    | ..   | ..   | ..   | ..           |
| <b>Total value of disposition of eggs</b> |      |      |      |      |     |      |      |      |       |      |      |      |              |
| 2008                                      | 288  | 321  | 296  | 349  | 333 | 315  | 333  | 354  | 386   | 320  | 351  | 332  | 3,978        |
| 2009                                      | 302  | 282  | 304  | 313  | 289 | 330  | 339  | 354  | 370   | 305  | 352  | 313  | 3,854        |
| 2010                                      | 334  | 341  | 350  | 403  | 303 | 275  | ..   | ..   | ..    | ..   | ..   | ..   | ..           |



**Table 5-4**  
**Disposition of eggs by province, quantity and value by province — Nova Scotia**

|                                           | Jan.  | Feb.  | Mar.  | Apr.  | May   | June  | July  | Aug.  | Sept. | Oct.  | Nov.  | Dec.  | Annual total |
|-------------------------------------------|-------|-------|-------|-------|-------|-------|-------|-------|-------|-------|-------|-------|--------------|
| quantity, in thousands of dozens          |       |       |       |       |       |       |       |       |       |       |       |       |              |
| <b>Sold for consumption</b>               |       |       |       |       |       |       |       |       |       |       |       |       |              |
| 2008                                      | 1,575 | 1,608 | 1,670 | 1,638 | 1,576 | 1,385 | 1,536 | 1,617 | 1,590 | 1,743 | 1,392 | 1,578 | 18,907       |
| 2009                                      | 1,533 | 1,511 | 1,699 | 1,650 | 1,645 | 1,534 | 1,490 | 1,626 | 1,571 | 1,741 | 1,522 | 1,735 | 19,256       |
| 2010                                      | 1,661 | 1,444 | 1,691 | 1,673 | 1,394 | 1,344 | ..    | ..    | ..    | ..    | ..    | ..    | ..           |
| <b>Sold for hatching</b>                  |       |       |       |       |       |       |       |       |       |       |       |       |              |
| 2008                                      | 0     | 0     | 0     | 0     | 0     | 0     | 0     | 0     | 0     | 0     | 0     | 0     | 0            |
| 2009                                      | 0     | 0     | 0     | 0     | 0     | 0     | 0     | 0     | 0     | 0     | 0     | 0     | 0            |
| 2010                                      | 0     | 0     | 0     | 0     | 0     | 0     | ..    | ..    | ..    | ..    | ..    | ..    | ..           |
| <b>Home consumption</b>                   |       |       |       |       |       |       |       |       |       |       |       |       |              |
| 2008                                      | 2     | 2     | 2     | 2     | 2     | 2     | 2     | 2     | 2     | 2     | 2     | 2     | 18           |
| 2009                                      | 2     | 2     | 2     | 2     | 2     | 2     | 2     | 2     | 2     | 2     | 2     | 2     | 18           |
| 2010                                      | 2     | 2     | 2     | 2     | 2     | 2     | ..    | ..    | ..    | ..    | ..    | ..    | ..           |
| <b>Leakers and rejects</b>                |       |       |       |       |       |       |       |       |       |       |       |       |              |
| 2008                                      | 31    | 32    | 33    | 33    | 31    | 28    | 31    | 32    | 32    | 35    | 28    | 31    | 376          |
| 2009                                      | 31    | 30    | 34    | 33    | 33    | 31    | 30    | 32    | 31    | 35    | 30    | 35    | 383          |
| 2010                                      | 33    | 29    | 34    | 33    | 28    | 27    | ..    | ..    | ..    | ..    | ..    | ..    | ..           |
| <b>Total disposition of eggs</b>          |       |       |       |       |       |       |       |       |       |       |       |       |              |
| 2008                                      | 1,607 | 1,641 | 1,705 | 1,672 | 1,609 | 1,414 | 1,568 | 1,651 | 1,624 | 1,780 | 1,422 | 1,611 | 19,302       |
| 2009                                      | 1,565 | 1,542 | 1,734 | 1,685 | 1,679 | 1,566 | 1,522 | 1,660 | 1,603 | 1,778 | 1,554 | 1,771 | 19,657       |
| 2010                                      | 1,695 | 1,474 | 1,727 | 1,708 | 1,424 | 1,372 | ..    | ..    | ..    | ..    | ..    | ..    | ..           |
| value, in thousands of dollars            |       |       |       |       |       |       |       |       |       |       |       |       |              |
| <b>Sold for consumption</b>               |       |       |       |       |       |       |       |       |       |       |       |       |              |
| 2008                                      | 1,928 | 1,967 | 2,044 | 2,005 | 1,991 | 1,751 | 1,979 | 2,122 | 2,112 | 2,329 | 1,821 | 2,062 | 24,109       |
| 2009                                      | 1,952 | 1,872 | 2,104 | 2,045 | 2,039 | 1,901 | 1,847 | 2,062 | 1,992 | 2,208 | 1,931 | 2,199 | 24,151       |
| 2010                                      | 2,107 | 1,941 | 2,273 | 2,249 | 1,883 | 1,814 | ..    | ..    | ..    | ..    | ..    | ..    | ..           |
| <b>Sold for hatching</b>                  |       |       |       |       |       |       |       |       |       |       |       |       |              |
| 2008                                      | 0     | 0     | 0     | 0     | 0     | 0     | 0     | 0     | 0     | 0     | 0     | 0     | 0            |
| 2009                                      | 0     | 0     | 0     | 0     | 0     | 0     | 0     | 0     | 0     | 0     | 0     | 0     | 0            |
| 2010                                      | 0     | 0     | 0     | 0     | 0     | 0     | ..    | ..    | ..    | ..    | ..    | ..    | ..           |
| <b>Home consumption</b>                   |       |       |       |       |       |       |       |       |       |       |       |       |              |
| 2008                                      | 3     | 3     | 3     | 3     | 3     | 3     | 3     | 3     | 3     | 3     | 3     | 3     | 38           |
| 2009                                      | 3     | 3     | 3     | 3     | 3     | 3     | 3     | 3     | 3     | 3     | 3     | 3     | 37           |
| 2010                                      | 3     | 3     | 3     | 3     | 3     | 3     | ..    | ..    | ..    | ..    | ..    | ..    | ..           |
| <b>Total value of disposition of eggs</b> |       |       |       |       |       |       |       |       |       |       |       |       |              |
| 2008                                      | 1,931 | 1,970 | 2,047 | 2,008 | 1,994 | 1,754 | 1,982 | 2,125 | 2,115 | 2,332 | 1,824 | 2,066 | 24,147       |
| 2009                                      | 1,955 | 1,875 | 2,107 | 2,048 | 2,042 | 1,904 | 1,850 | 2,065 | 1,995 | 2,211 | 1,934 | 2,202 | 24,188       |
| 2010                                      | 2,110 | 1,945 | 2,276 | 2,252 | 1,886 | 1,817 | ..    | ..    | ..    | ..    | ..    | ..    | ..           |

**Table 5-5  
Disposition of eggs by province, quantity and value by province — New Brunswick**

|                                           | Jan.  | Feb.  | Mar.  | Apr.  | May   | June  | July  | Aug.  | Sept. | Oct.  | Nov.  | Dec.  | Annual total |
|-------------------------------------------|-------|-------|-------|-------|-------|-------|-------|-------|-------|-------|-------|-------|--------------|
| quantity, in thousands of dozens          |       |       |       |       |       |       |       |       |       |       |       |       |              |
| <b>Sold for consumption</b>               |       |       |       |       |       |       |       |       |       |       |       |       |              |
| 2008                                      | 864   | 844   | 880   | 1,023 | 852   | 842   | 885   | 888   | 897   | 893   | 853   | 985   | 10,704       |
| 2009                                      | 788   | 838   | 899   | 1,042 | 909   | 876   | 981   | 949   | 825   | 893   | 897   | 1,077 | 10,974       |
| 2010                                      | 839   | 812   | 872   | 927   | 953   | 941   | ..    | ..    | ..    | ..    | ..    | ..    | ..           |
| <b>Sold for hatching</b>                  |       |       |       |       |       |       |       |       |       |       |       |       |              |
| 2008                                      | 383   | 386   | 449   | 430   | 446   | 446   | 457   | 459   | 421   | 432   | 317   | 395   | 5,019        |
| 2009                                      | 438   | 409   | 449   | 431   | 464   | 424   | 436   | 422   | 392   | 394   | 378   | 444   | 5,082        |
| 2010                                      | 381   | 351   | 418   | 421   | 421   | 410   | ..    | ..    | ..    | ..    | ..    | ..    | ..           |
| <b>Home consumption</b>                   |       |       |       |       |       |       |       |       |       |       |       |       |              |
| 2008                                      | 1     | 1     | 1     | 1     | 1     | 1     | 1     | 1     | 1     | 1     | 1     | 1     | 11           |
| 2009                                      | 1     | 1     | 1     | 1     | 1     | 1     | 1     | 1     | 1     | 1     | 1     | 1     | 11           |
| 2010                                      | 1     | 1     | 1     | 1     | 1     | 1     | ..    | ..    | ..    | ..    | ..    | ..    | ..           |
| <b>Leakers and rejects</b>                |       |       |       |       |       |       |       |       |       |       |       |       |              |
| 2008                                      | 25    | 25    | 26    | 29    | 26    | 26    | 27    | 27    | 26    | 26    | 23    | 28    | 313          |
| 2009                                      | 24    | 25    | 27    | 29    | 27    | 26    | 28    | 27    | 24    | 26    | 25    | 30    | 320          |
| 2010                                      | 24    | 23    | 26    | 27    | 27    | 27    | ..    | ..    | ..    | ..    | ..    | ..    | ..           |
| <b>Total disposition of eggs</b>          |       |       |       |       |       |       |       |       |       |       |       |       |              |
| 2008                                      | 1,272 | 1,255 | 1,356 | 1,483 | 1,325 | 1,314 | 1,369 | 1,374 | 1,345 | 1,352 | 1,194 | 1,408 | 16,047       |
| 2009                                      | 1,251 | 1,273 | 1,376 | 1,504 | 1,401 | 1,327 | 1,446 | 1,400 | 1,243 | 1,313 | 1,301 | 1,552 | 16,386       |
| 2010                                      | 1,245 | 1,188 | 1,317 | 1,376 | 1,401 | 1,379 | ..    | ..    | ..    | ..    | ..    | ..    | ..           |
| value, in thousands of dollars            |       |       |       |       |       |       |       |       |       |       |       |       |              |
| <b>Sold for consumption</b>               |       |       |       |       |       |       |       |       |       |       |       |       |              |
| 2008                                      | 1,057 | 1,032 | 1,075 | 1,269 | 1,074 | 1,062 | 1,137 | 1,162 | 1,174 | 1,178 | 1,126 | 1,290 | 13,635       |
| 2009                                      | 1,018 | 1,065 | 1,142 | 1,323 | 1,137 | 1,101 | 1,233 | 1,213 | 1,055 | 1,140 | 1,145 | 1,375 | 13,946       |
| 2010                                      | 1,072 | 1,099 | 1,181 | 1,254 | 1,287 | 1,271 | ..    | ..    | ..    | ..    | ..    | ..    | ..           |
| <b>Sold for hatching</b>                  |       |       |       |       |       |       |       |       |       |       |       |       |              |
| 2008                                      | 1,196 | 1,205 | 1,404 | 1,345 | 1,395 | 1,393 | 1,428 | 1,435 | 1,315 | 1,350 | 989   | 1,234 | 15,689       |
| 2009                                      | 1,369 | 1,277 | 1,404 | 1,349 | 1,451 | 1,326 | 1,364 | 1,319 | 1,225 | 1,232 | 1,182 | 1,388 | 15,885       |
| 2010                                      | 1,190 | 1,099 | 1,306 | 1,317 | 1,315 | 1,283 | ..    | ..    | ..    | ..    | ..    | ..    | ..           |
| <b>Home consumption</b>                   |       |       |       |       |       |       |       |       |       |       |       |       |              |
| 2008                                      | 1     | 1     | 1     | 1     | 1     | 1     | 1     | 1     | 1     | 1     | 1     | 1     | 17           |
| 2009                                      | 1     | 1     | 1     | 1     | 1     | 1     | 1     | 1     | 1     | 1     | 1     | 1     | 17           |
| 2010                                      | 1     | 1     | 1     | 1     | 1     | 1     | ..    | ..    | ..    | ..    | ..    | ..    | ..           |
| <b>Total value of disposition of eggs</b> |       |       |       |       |       |       |       |       |       |       |       |       |              |
| 2008                                      | 2,254 | 2,239 | 2,480 | 2,616 | 2,471 | 2,456 | 2,566 | 2,598 | 2,490 | 2,529 | 2,116 | 2,525 | 29,341       |
| 2009                                      | 2,388 | 2,344 | 2,548 | 2,673 | 2,589 | 2,428 | 2,598 | 2,533 | 2,281 | 2,373 | 2,328 | 2,764 | 29,848       |
| 2010                                      | 2,264 | 2,199 | 2,488 | 2,573 | 2,603 | 2,555 | ..    | ..    | ..    | ..    | ..    | ..    | ..           |

**Table 5-6**  
**Disposition of eggs by province, quantity and value by province — Quebec**

|                                           | Jan.   | Feb.   | Mar.   | Apr.   | May    | June   | July   | Aug.   | Sept.  | Oct.   | Nov.   | Dec.   | Annual total |
|-------------------------------------------|--------|--------|--------|--------|--------|--------|--------|--------|--------|--------|--------|--------|--------------|
| quantity, in thousands of dozens          |        |        |        |        |        |        |        |        |        |        |        |        |              |
| <b>Sold for consumption</b>               |        |        |        |        |        |        |        |        |        |        |        |        |              |
| 2008                                      | 7,888  | 7,319  | 7,337  | 7,248  | 7,124  | 7,189  | 7,932  | 7,389  | 6,833  | 7,521  | 7,007  | 7,807  | 88,594       |
| 2009                                      | 7,711  | 6,969  | 7,762  | 7,445  | 7,401  | 7,280  | 7,552  | 7,606  | 6,980  | 7,672  | 7,360  | 7,630  | 89,368       |
| 2010                                      | 7,769  | 7,316  | 8,006  | 7,624  | 7,693  | 7,464  | ..     | ..     | ..     | ..     | ..     | ..     | ..           |
| <b>Sold for hatching</b>                  |        |        |        |        |        |        |        |        |        |        |        |        |              |
| 2008                                      | 1,377  | 1,320  | 1,351  | 1,281  | 1,395  | 1,227  | 1,357  | 1,327  | 1,405  | 1,331  | 1,376  | 1,513  | 16,259       |
| 2009                                      | 1,386  | 1,224  | 1,343  | 1,251  | 1,329  | 1,382  | 1,359  | 1,338  | 1,326  | 1,358  | 1,360  | 1,437  | 16,093       |
| 2010                                      | 1,154  | 1,211  | 1,387  | 1,341  | 1,389  | 1,390  | ..     | ..     | ..     | ..     | ..     | ..     | ..           |
| <b>Home consumption</b>                   |        |        |        |        |        |        |        |        |        |        |        |        |              |
| 2008                                      | 6      | 6      | 6      | 6      | 6      | 6      | 6      | 6      | 6      | 6      | 6      | 6      | 72           |
| 2009                                      | 6      | 6      | 6      | 6      | 6      | 6      | 6      | 6      | 6      | 6      | 6      | 6      | 72           |
| 2010                                      | 6      | 6      | 6      | 6      | 6      | 6      | ..     | ..     | ..     | ..     | ..     | ..     | ..           |
| <b>Leakers and rejects</b>                |        |        |        |        |        |        |        |        |        |        |        |        |              |
| 2008                                      | 184    | 172    | 173    | 170    | 170    | 167    | 185    | 173    | 164    | 176    | 167    | 185    | 2,086        |
| 2009                                      | 181    | 163    | 181    | 173    | 174    | 172    | 177    | 178    | 165    | 180    | 174    | 180    | 2,098        |
| 2010                                      | 178    | 170    | 187    | 178    | 181    | 176    | ..     | ..     | ..     | ..     | ..     | ..     | ..           |
| <b>Total disposition of eggs</b>          |        |        |        |        |        |        |        |        |        |        |        |        |              |
| 2008                                      | 9,455  | 8,817  | 8,867  | 8,705  | 8,695  | 8,589  | 9,480  | 8,895  | 8,408  | 9,034  | 8,556  | 9,511  | 107,011      |
| 2009                                      | 9,284  | 8,362  | 9,292  | 8,875  | 8,910  | 8,840  | 9,094  | 9,128  | 8,477  | 9,216  | 8,900  | 9,253  | 107,631      |
| 2010                                      | 9,107  | 8,703  | 9,586  | 9,149  | 9,269  | 9,036  | ..     | ..     | ..     | ..     | ..     | ..     | ..           |
| value, in thousands of dollars            |        |        |        |        |        |        |        |        |        |        |        |        |              |
| <b>Sold for consumption</b>               |        |        |        |        |        |        |        |        |        |        |        |        |              |
| 2008                                      | 9,264  | 8,624  | 8,643  | 8,741  | 8,663  | 8,742  | 9,876  | 9,415  | 8,703  | 9,636  | 8,718  | 9,713  | 108,738      |
| 2009                                      | 9,400  | 8,328  | 9,089  | 8,718  | 8,489  | 8,328  | 8,640  | 8,969  | 8,231  | 9,046  | 8,679  | 8,996  | 104,913      |
| 2010                                      | 9,159  | 9,122  | 9,983  | 9,507  | 9,485  | 9,203  | ..     | ..     | ..     | ..     | ..     | ..     | ..           |
| <b>Sold for hatching</b>                  |        |        |        |        |        |        |        |        |        |        |        |        |              |
| 2008                                      | 4,971  | 5,014  | 5,216  | 4,944  | 5,495  | 4,836  | 5,564  | 5,442  | 5,704  | 5,402  | 5,351  | 5,885  | 63,824       |
| 2009                                      | 5,446  | 4,809  | 5,373  | 5,005  | 5,357  | 5,568  | 5,570  | 5,391  | 5,345  | 5,445  | 5,454  | 5,749  | 64,512       |
| 2010                                      | 4,615  | 4,758  | 5,449  | 5,218  | 5,404  | 5,420  | ..     | ..     | ..     | ..     | ..     | ..     | ..           |
| <b>Home consumption</b>                   |        |        |        |        |        |        |        |        |        |        |        |        |              |
| 2008                                      | 8      | 8      | 8      | 8      | 8      | 8      | 8      | 8      | 8      | 8      | 8      | 8      | 96           |
| 2009                                      | 8      | 8      | 8      | 8      | 8      | 8      | 8      | 8      | 8      | 8      | 8      | 8      | 96           |
| 2010                                      | 8      | 8      | 8      | 8      | 8      | 8      | ..     | ..     | ..     | ..     | ..     | ..     | ..           |
| <b>Total value of disposition of eggs</b> |        |        |        |        |        |        |        |        |        |        |        |        |              |
| 2008                                      | 14,243 | 13,646 | 13,867 | 13,693 | 14,166 | 13,586 | 15,448 | 14,865 | 14,415 | 15,046 | 14,077 | 15,606 | 172,658      |
| 2009                                      | 14,854 | 13,145 | 14,470 | 13,731 | 13,854 | 13,904 | 14,218 | 14,368 | 13,584 | 14,499 | 14,141 | 14,753 | 169,521      |
| 2010                                      | 13,782 | 13,888 | 15,440 | 14,733 | 14,897 | 14,631 | ..     | ..     | ..     | ..     | ..     | ..     | ..           |

**Table 5-7**  
**Disposition of eggs by province, quantity and value by province — Ontario**

|                                           | Jan.   | Feb.   | Mar.   | Apr.   | May    | June   | July   | Aug.   | Sept.  | Oct.   | Nov.   | Dec.   | Annual total |
|-------------------------------------------|--------|--------|--------|--------|--------|--------|--------|--------|--------|--------|--------|--------|--------------|
| quantity, in thousands of dozens          |        |        |        |        |        |        |        |        |        |        |        |        |              |
| <b>Sold for consumption</b>               |        |        |        |        |        |        |        |        |        |        |        |        |              |
| 2008                                      | 17,223 | 15,247 | 17,695 | 17,390 | 17,203 | 18,343 | 16,441 | 18,927 | 17,075 | 19,103 | 17,127 | 18,998 | 210,772      |
| 2009                                      | 17,373 | 16,155 | 16,348 | 17,635 | 18,142 | 17,647 | 16,962 | 18,230 | 16,511 | 18,652 | 18,808 | 18,621 | 211,084      |
| 2010                                      | 17,649 | 16,327 | 17,735 | 17,591 | 18,753 | 19,062 | ..     | ..     | ..     | ..     | ..     | ..     | ..           |
| <b>Sold for hatching</b>                  |        |        |        |        |        |        |        |        |        |        |        |        |              |
| 2008                                      | 1,512  | 1,517  | 1,609  | 1,483  | 1,461  | 1,425  | 1,473  | 1,520  | 1,588  | 1,517  | 1,534  | 1,555  | 18,192       |
| 2009                                      | 1,631  | 1,410  | 1,556  | 1,469  | 1,453  | 1,503  | 1,578  | 1,499  | 1,566  | 1,547  | 1,512  | 1,535  | 18,258       |
| 2010                                      | 1,483  | 1,417  | 1,584  | 1,523  | 1,521  | 1,579  | ..     | ..     | ..     | ..     | ..     | ..     | ..           |
| <b>Home consumption</b>                   |        |        |        |        |        |        |        |        |        |        |        |        |              |
| 2008                                      | 30     | 30     | 30     | 30     | 30     | 30     | 30     | 30     | 30     | 30     | 30     | 30     | 360          |
| 2009                                      | 30     | 30     | 30     | 30     | 30     | 30     | 30     | 30     | 30     | 30     | 30     | 30     | 360          |
| 2010                                      | 30     | 30     | 30     | 30     | 30     | 30     | ..     | ..     | ..     | ..     | ..     | ..     | ..           |
| <b>Leakers and rejects</b>                |        |        |        |        |        |        |        |        |        |        |        |        |              |
| 2008                                      | 373    | 334    | 385    | 376    | 372    | 394    | 357    | 407    | 372    | 411    | 372    | 409    | 4,562        |
| 2009                                      | 379    | 350    | 357    | 381    | 390    | 381    | 369    | 393    | 360    | 402    | 405    | 401    | 4,568        |
| 2010                                      | 381    | 353    | 385    | 381    | 404    | 411    | ..     | ..     | ..     | ..     | ..     | ..     | ..           |
| <b>Total disposition of eggs</b>          |        |        |        |        |        |        |        |        |        |        |        |        |              |
| 2008                                      | 19,138 | 17,128 | 19,719 | 19,279 | 19,066 | 20,192 | 18,301 | 20,884 | 19,065 | 21,061 | 19,063 | 20,992 | 233,886      |
| 2009                                      | 19,413 | 17,945 | 18,291 | 19,515 | 20,015 | 19,561 | 18,939 | 20,152 | 18,467 | 20,631 | 20,755 | 20,587 | 234,270      |
| 2010                                      | 19,543 | 18,127 | 19,734 | 19,525 | 20,708 | 21,082 | ..     | ..     | ..     | ..     | ..     | ..     | ..           |
| value, in thousands of dollars            |        |        |        |        |        |        |        |        |        |        |        |        |              |
| <b>Sold for consumption</b>               |        |        |        |        |        |        |        |        |        |        |        |        |              |
| 2008                                      | 19,491 | 17,301 | 20,062 | 20,045 | 19,986 | 21,307 | 19,497 | 22,914 | 20,659 | 23,109 | 20,240 | 22,448 | 247,059      |
| 2009                                      | 19,958 | 18,007 | 18,224 | 19,655 | 20,220 | 19,633 | 18,874 | 20,284 | 18,373 | 20,753 | 20,923 | 20,716 | 235,620      |
| 2010                                      | 19,636 | 19,568 | 21,255 | 21,082 | 22,454 | 22,823 | ..     | ..     | ..     | ..     | ..     | ..     | ..           |
| <b>Sold for hatching</b>                  |        |        |        |        |        |        |        |        |        |        |        |        |              |
| 2008                                      | 5,382  | 5,688  | 6,113  | 5,636  | 5,670  | 5,530  | 5,949  | 6,139  | 6,351  | 6,067  | 5,889  | 5,971  | 70,385       |
| 2009                                      | 6,312  | 5,570  | 6,144  | 5,833  | 5,769  | 5,968  | 6,374  | 5,951  | 6,215  | 6,126  | 5,986  | 6,048  | 72,296       |
| 2010                                      | 5,741  | 5,482  | 6,068  | 5,832  | 5,854  | 6,081  | ..     | ..     | ..     | ..     | ..     | ..     | ..           |
| <b>Home consumption</b>                   |        |        |        |        |        |        |        |        |        |        |        |        |              |
| 2008                                      | 42     | 42     | 40     | 40     | 41     | 41     | 42     | 43     | 43     | 43     | 42     | 42     | 501          |
| 2009                                      | 41     | 40     | 40     | 40     | 40     | 40     | 40     | 40     | 40     | 40     | 40     | 40     | 481          |
| 2010                                      | 40     | 43     | 43     | 43     | 43     | 43     | ..     | ..     | ..     | ..     | ..     | ..     | ..           |
| <b>Total value of disposition of eggs</b> |        |        |        |        |        |        |        |        |        |        |        |        |              |
| 2008                                      | 24,915 | 23,031 | 26,215 | 25,721 | 25,697 | 26,878 | 25,488 | 29,096 | 27,053 | 29,219 | 26,171 | 28,461 | 317,945      |
| 2009                                      | 26,311 | 23,617 | 24,408 | 25,528 | 26,029 | 25,641 | 25,288 | 26,275 | 24,628 | 26,919 | 26,949 | 26,804 | 308,397      |
| 2010                                      | 25,417 | 25,093 | 27,366 | 26,957 | 28,351 | 28,947 | ..     | ..     | ..     | ..     | ..     | ..     | ..           |

**Table 5-8**  
**Disposition of eggs by province, quantity and value by province — Manitoba**

|                                           | Jan.  | Feb.  | Mar.  | Apr.  | May   | June  | July  | Aug.  | Sept. | Oct.  | Nov.  | Dec.  | Annual total |
|-------------------------------------------|-------|-------|-------|-------|-------|-------|-------|-------|-------|-------|-------|-------|--------------|
| quantity, in thousands of dozens          |       |       |       |       |       |       |       |       |       |       |       |       |              |
| <b>Sold for consumption</b>               |       |       |       |       |       |       |       |       |       |       |       |       |              |
| 2008                                      | 6,712 | 5,985 | 6,134 | 5,973 | 6,231 | 6,533 | 6,625 | 6,546 | 6,166 | 6,160 | 5,786 | 6,371 | 75,222       |
| 2009                                      | 7,388 | 5,837 | 6,349 | 5,872 | 6,014 | 6,369 | 6,278 | 6,275 | 6,557 | 6,161 | 5,955 | 6,453 | 75,508       |
| 2010                                      | 7,468 | 5,890 | 6,428 | 6,124 | 6,140 | 6,519 | ..    | ..    | ..    | ..    | ..    | ..    | ..           |
| <b>Sold for hatching</b>                  |       |       |       |       |       |       |       |       |       |       |       |       |              |
| 2008                                      | 307   | 282   | 300   | 280   | 290   | 278   | 268   | 246   | 256   | 275   | 259   | 242   | 3,283        |
| 2009                                      | 282   | 252   | 305   | 286   | 250   | 283   | 257   | 261   | 251   | 274   | 240   | 255   | 3,197        |
| 2010                                      | 270   | 251   | 308   | 264   | 273   | 272   | ..    | ..    | ..    | ..    | ..    | ..    | ..           |
| <b>Home consumption</b>                   |       |       |       |       |       |       |       |       |       |       |       |       |              |
| 2008                                      | 14    | 14    | 14    | 14    | 14    | 14    | 14    | 14    | 14    | 14    | 14    | 14    | 168          |
| 2009                                      | 14    | 14    | 14    | 14    | 14    | 14    | 14    | 14    | 14    | 14    | 14    | 14    | 168          |
| 2010                                      | 14    | 14    | 14    | 14    | 14    | 14    | ..    | ..    | ..    | ..    | ..    | ..    | ..           |
| <b>Leakers and rejects</b>                |       |       |       |       |       |       |       |       |       |       |       |       |              |
| 2008                                      | 140   | 125   | 128   | 125   | 130   | 136   | 137   | 135   | 128   | 128   | 120   | 132   | 1,564        |
| 2009                                      | 153   | 121   | 133   | 123   | 125   | 133   | 130   | 130   | 136   | 128   | 124   | 134   | 1,570        |
| 2010                                      | 154   | 122   | 134   | 127   | 128   | 135   | ..    | ..    | ..    | ..    | ..    | ..    | ..           |
| <b>Total disposition of eggs</b>          |       |       |       |       |       |       |       |       |       |       |       |       |              |
| 2008                                      | 7,173 | 6,406 | 6,576 | 6,392 | 6,665 | 6,961 | 7,044 | 6,941 | 6,564 | 6,577 | 6,179 | 6,759 | 80,237       |
| 2009                                      | 7,837 | 6,224 | 6,801 | 6,295 | 6,403 | 6,799 | 6,679 | 6,680 | 6,958 | 6,577 | 6,333 | 6,856 | 80,443       |
| 2010                                      | 7,906 | 6,277 | 6,884 | 6,529 | 6,555 | 6,940 | ..    | ..    | ..    | ..    | ..    | ..    | ..           |
| value, in thousands of dollars            |       |       |       |       |       |       |       |       |       |       |       |       |              |
| <b>Sold for consumption</b>               |       |       |       |       |       |       |       |       |       |       |       |       |              |
| 2008                                      | 4,709 | 4,401 | 4,250 | 4,115 | 4,396 | 4,580 | 4,765 | 4,916 | 4,636 | 4,631 | 4,375 | 4,791 | 54,565       |
| 2009                                      | 5,167 | 4,087 | 4,412 | 4,075 | 4,252 | 4,478 | 4,519 | 4,714 | 4,944 | 4,656 | 4,515 | 4,883 | 54,702       |
| 2010                                      | 5,255 | 4,118 | 4,483 | 4,271 | 4,336 | 4,809 | ..    | ..    | ..    | ..    | ..    | ..    | ..           |
| <b>Sold for hatching</b>                  |       |       |       |       |       |       |       |       |       |       |       |       |              |
| 2008                                      | 1,176 | 1,139 | 1,229 | 1,146 | 1,189 | 1,160 | 1,117 | 1,046 | 1,090 | 1,173 | 1,104 | 1,032 | 13,601       |
| 2009                                      | 1,202 | 1,075 | 1,274 | 1,197 | 1,047 | 1,184 | 1,090 | 1,109 | 1,065 | 1,166 | 1,021 | 1,083 | 13,513       |
| 2010                                      | 1,146 | 1,065 | 1,307 | 1,110 | 1,148 | 1,141 | ..    | ..    | ..    | ..    | ..    | ..    | ..           |
| <b>Home consumption</b>                   |       |       |       |       |       |       |       |       |       |       |       |       |              |
| 2008                                      | 12    | 13    | 12    | 12    | 12    | 12    | 12    | 13    | 13    | 13    | 13    | 13    | 150          |
| 2009                                      | 12    | 12    | 12    | 12    | 12    | 12    | 12    | 13    | 13    | 13    | 13    | 13    | 149          |
| 2010                                      | 12    | 12    | 12    | 12    | 12    | 13    | ..    | ..    | ..    | ..    | ..    | ..    | ..           |
| <b>Total value of disposition of eggs</b> |       |       |       |       |       |       |       |       |       |       |       |       |              |
| 2008                                      | 5,897 | 5,553 | 5,491 | 5,273 | 5,597 | 5,752 | 5,894 | 5,975 | 5,739 | 5,817 | 5,492 | 5,836 | 68,316       |
| 2009                                      | 6,381 | 5,174 | 5,698 | 5,284 | 5,311 | 5,674 | 5,621 | 5,836 | 6,022 | 5,835 | 5,549 | 5,979 | 68,364       |
| 2010                                      | 6,413 | 5,195 | 5,802 | 5,393 | 5,496 | 5,963 | ..    | ..    | ..    | ..    | ..    | ..    | ..           |

**Table 5-9**  
**Disposition of eggs by province, quantity and value by province — Saskatchewan**

|                                           | Jan.  | Feb.  | Mar.  | Apr.  | May   | June  | July  | Aug.  | Sept. | Oct.  | Nov.  | Dec.  | Annual total |
|-------------------------------------------|-------|-------|-------|-------|-------|-------|-------|-------|-------|-------|-------|-------|--------------|
| quantity, in thousands of dozens          |       |       |       |       |       |       |       |       |       |       |       |       |              |
| <b>Sold for consumption</b>               |       |       |       |       |       |       |       |       |       |       |       |       |              |
| 2008                                      | 1,913 | 1,834 | 1,942 | 1,845 | 2,229 | 1,853 | 1,906 | 1,983 | 1,966 | 1,886 | 2,101 | 1,959 | 23,417       |
| 2009                                      | 2,116 | 2,027 | 2,023 | 1,970 | 2,144 | 1,835 | 1,782 | 1,903 | 2,165 | 1,698 | 1,901 | 2,331 | 23,895       |
| 2010                                      | 2,009 | 2,104 | 2,171 | 1,964 | 2,116 | 2,054 | ..    | ..    | ..    | ..    | ..    | ..    | ..           |
| <b>Sold for hatching</b>                  |       |       |       |       |       |       |       |       |       |       |       |       |              |
| 2008                                      | 149   | 192   | 149   | 171   | 162   | 151   | 177   | 206   | 217   | 209   | 223   | 206   | 2,211        |
| 2009                                      | 278   | 203   | 203   | 234   | 223   | 248   | 206   | 196   | 208   | 195   | 223   | 203   | 2,620        |
| 2010                                      | 189   | 174   | 227   | 208   | 227   | 184   | ..    | ..    | ..    | ..    | ..    | ..    | ..           |
| <b>Home consumption</b>                   |       |       |       |       |       |       |       |       |       |       |       |       |              |
| 2008                                      | 14    | 14    | 14    | 14    | 14    | 14    | 14    | 14    | 14    | 14    | 14    | 14    | 168          |
| 2009                                      | 14    | 14    | 14    | 14    | 14    | 14    | 14    | 14    | 14    | 14    | 14    | 14    | 168          |
| 2010                                      | 14    | 14    | 14    | 14    | 14    | 14    | ..    | ..    | ..    | ..    | ..    | ..    | ..           |
| <b>Leakers and rejects</b>                |       |       |       |       |       |       |       |       |       |       |       |       |              |
| 2008                                      | 41    | 41    | 42    | 40    | 48    | 40    | 42    | 44    | 44    | 42    | 47    | 43    | 514          |
| 2009                                      | 48    | 45    | 45    | 44    | 47    | 42    | 40    | 42    | 47    | 38    | 43    | 51    | 532          |
| 2010                                      | 44    | 46    | 48    | 43    | 47    | 45    | ..    | ..    | ..    | ..    | ..    | ..    | ..           |
| <b>Total disposition of eggs</b>          |       |       |       |       |       |       |       |       |       |       |       |       |              |
| 2008                                      | 2,117 | 2,081 | 2,147 | 2,070 | 2,453 | 2,058 | 2,139 | 2,247 | 2,241 | 2,151 | 2,385 | 2,222 | 26,310       |
| 2009                                      | 2,456 | 2,289 | 2,285 | 2,262 | 2,428 | 2,139 | 2,042 | 2,155 | 2,434 | 1,945 | 2,181 | 2,599 | 27,215       |
| 2010                                      | 2,256 | 2,338 | 2,460 | 2,229 | 2,404 | 2,297 | ..    | ..    | ..    | ..    | ..    | ..    | ..           |
| value, in thousands of dollars            |       |       |       |       |       |       |       |       |       |       |       |       |              |
| <b>Sold for consumption</b>               |       |       |       |       |       |       |       |       |       |       |       |       |              |
| 2008                                      | 2,079 | 2,026 | 2,210 | 2,135 | 2,598 | 2,163 | 2,258 | 2,381 | 2,377 | 2,280 | 2,454 | 2,289 | 27,250       |
| 2009                                      | 2,397 | 2,225 | 2,224 | 2,164 | 2,251 | 1,939 | 1,887 | 2,017 | 2,291 | 1,804 | 2,014 | 2,463 | 25,676       |
| 2010                                      | 2,124 | 2,400 | 2,478 | 2,243 | 2,424 | 2,353 | ..    | ..    | ..    | ..    | ..    | ..    | ..           |
| <b>Sold for hatching</b>                  |       |       |       |       |       |       |       |       |       |       |       |       |              |
| 2008                                      | 572   | 775   | 610   | 732   | 693   | 649   | 761   | 906   | 955   | 921   | 983   | 905   | 9,462        |
| 2009                                      | 1,222 | 891   | 893   | 1,031 | 983   | 1,090 | 908   | 861   | 916   | 859   | 981   | 893   | 11,528       |
| 2010                                      | 831   | 763   | 997   | 915   | 999   | 810   | ..    | ..    | ..    | ..    | ..    | ..    | ..           |
| <b>Home consumption</b>                   |       |       |       |       |       |       |       |       |       |       |       |       |              |
| 2008                                      | 19    | 20    | 19    | 19    | 19    | 19    | 19    | 19    | 19    | 19    | 19    | 19    | 229          |
| 2009                                      | 19    | 19    | 19    | 19    | 17    | 17    | 17    | 17    | 17    | 17    | 17    | 17    | 212          |
| 2010                                      | 17    | 19    | 19    | 19    | 19    | 19    | ..    | ..    | ..    | ..    | ..    | ..    | ..           |
| <b>Total value of disposition of eggs</b> |       |       |       |       |       |       |       |       |       |       |       |       |              |
| 2008                                      | 2,670 | 2,821 | 2,839 | 2,886 | 3,310 | 2,831 | 3,038 | 3,306 | 3,351 | 3,220 | 3,456 | 3,213 | 36,941       |
| 2009                                      | 3,638 | 3,135 | 3,136 | 3,214 | 3,251 | 3,046 | 2,812 | 2,895 | 3,224 | 2,680 | 3,012 | 3,373 | 37,416       |
| 2010                                      | 2,972 | 3,182 | 3,494 | 3,177 | 3,442 | 3,182 | ..    | ..    | ..    | ..    | ..    | ..    | ..           |

**Table 5-10**  
**Disposition of eggs by province, quantity and value by province — Alberta**

|                                           | Jan.  | Feb.  | Mar.  | Apr.  | May   | June  | July  | Aug.  | Sept. | Oct.  | Nov.  | Dec.  | Annual total |
|-------------------------------------------|-------|-------|-------|-------|-------|-------|-------|-------|-------|-------|-------|-------|--------------|
| quantity, in thousands of dozens          |       |       |       |       |       |       |       |       |       |       |       |       |              |
| <b>Sold for consumption</b>               |       |       |       |       |       |       |       |       |       |       |       |       |              |
| 2008                                      | 3,722 | 3,176 | 3,226 | 2,543 | 4,285 | 3,264 | 3,215 | 3,112 | 3,579 | 3,723 | 3,150 | 3,514 | 40,509       |
| 2009                                      | 3,362 | 3,138 | 3,466 | 3,382 | 3,593 | 3,291 | 3,254 | 3,508 | 3,296 | 3,405 | 3,315 | 3,578 | 40,588       |
| 2010                                      | 3,746 | 3,662 | 3,598 | 3,356 | 3,297 | 3,364 | ..    | ..    | ..    | ..    | ..    | ..    | ..           |
| <b>Sold for hatching</b>                  |       |       |       |       |       |       |       |       |       |       |       |       |              |
| 2008                                      | 513   | 489   | 537   | 589   | 580   | 560   | 562   | 560   | 580   | 521   | 561   | 457   | 6,507        |
| 2009                                      | 495   | 468   | 473   | 476   | 481   | 504   | 549   | 478   | 525   | 483   | 549   | 513   | 5,991        |
| 2010                                      | 484   | 462   | 551   | 498   | 542   | 499   | ..    | ..    | ..    | ..    | ..    | ..    | ..           |
| <b>Home consumption</b>                   |       |       |       |       |       |       |       |       |       |       |       |       |              |
| 2008                                      | 31    | 31    | 31    | 31    | 31    | 31    | 31    | 31    | 31    | 31    | 31    | 31    | 372          |
| 2009                                      | 31    | 31    | 31    | 31    | 31    | 31    | 31    | 31    | 31    | 31    | 31    | 31    | 372          |
| 2010                                      | 31    | 31    | 31    | 31    | 31    | 31    | ..    | ..    | ..    | ..    | ..    | ..    | ..           |
| <b>Leakers and rejects</b>                |       |       |       |       |       |       |       |       |       |       |       |       |              |
| 2008                                      | 85    | 74    | 75    | 63    | 97    | 77    | 76    | 74    | 83    | 85    | 74    | 80    | 943          |
| 2009                                      | 77    | 72    | 79    | 77    | 82    | 76    | 76    | 80    | 77    | 78    | 77    | 82    | 933          |
| 2010                                      | 85    | 83    | 83    | 77    | 77    | 77    | ..    | ..    | ..    | ..    | ..    | ..    | ..           |
| <b>Total disposition of eggs</b>          |       |       |       |       |       |       |       |       |       |       |       |       |              |
| 2008                                      | 4,351 | 3,770 | 3,869 | 3,226 | 4,993 | 3,932 | 3,884 | 3,777 | 4,273 | 4,360 | 3,816 | 4,082 | 48,331       |
| 2009                                      | 3,965 | 3,709 | 4,049 | 3,966 | 4,187 | 3,902 | 3,910 | 4,097 | 3,929 | 3,997 | 3,972 | 4,204 | 47,884       |
| 2010                                      | 4,346 | 4,238 | 4,263 | 3,962 | 3,947 | 3,971 | ..    | ..    | ..    | ..    | ..    | ..    | ..           |
| value, in thousands of dollars            |       |       |       |       |       |       |       |       |       |       |       |       |              |
| <b>Sold for consumption</b>               |       |       |       |       |       |       |       |       |       |       |       |       |              |
| 2008                                      | 4,190 | 3,636 | 3,810 | 3,056 | 5,178 | 3,949 | 3,942 | 3,865 | 4,466 | 4,640 | 3,809 | 4,246 | 48,787       |
| 2009                                      | 3,948 | 3,579 | 3,953 | 3,856 | 3,923 | 3,614 | 3,576 | 3,855 | 3,623 | 3,743 | 3,644 | 3,931 | 45,245       |
| 2010                                      | 4,113 | 4,333 | 4,259 | 3,972 | 3,886 | 3,965 | ..    | ..    | ..    | ..    | ..    | ..    | ..           |
| <b>Sold for hatching</b>                  |       |       |       |       |       |       |       |       |       |       |       |       |              |
| 2008                                      | 2,063 | 2,048 | 2,250 | 2,508 | 2,469 | 2,395 | 2,404 | 2,449 | 2,532 | 2,277 | 2,453 | 1,995 | 27,843       |
| 2009                                      | 2,221 | 2,103 | 2,074 | 2,089 | 2,100 | 2,201 | 2,372 | 2,063 | 2,267 | 2,099 | 2,387 | 2,232 | 26,208       |
| 2010                                      | 2,107 | 2,012 | 2,407 | 2,176 | 2,342 | 2,169 | ..    | ..    | ..    | ..    | ..    | ..    | ..           |
| <b>Home consumption</b>                   |       |       |       |       |       |       |       |       |       |       |       |       |              |
| 2008                                      | 41    | 41    | 41    | 41    | 41    | 41    | 42    | 43    | 42    | 42    | 41    | 41    | 497          |
| 2009                                      | 40    | 39    | 39    | 39    | 37    | 37    | 37    | 37    | 37    | 37    | 37    | 37    | 453          |
| 2010                                      | 37    | 40    | 40    | 40    | 40    | 40    | ..    | ..    | ..    | ..    | ..    | ..    | ..           |
| <b>Total value of disposition of eggs</b> |       |       |       |       |       |       |       |       |       |       |       |       |              |
| 2008                                      | 6,294 | 5,725 | 6,101 | 5,605 | 7,688 | 6,385 | 6,388 | 6,357 | 7,040 | 6,959 | 6,303 | 6,282 | 77,127       |
| 2009                                      | 6,209 | 5,721 | 6,066 | 5,984 | 6,060 | 5,852 | 5,985 | 5,955 | 5,927 | 5,879 | 6,068 | 6,200 | 71,906       |
| 2010                                      | 6,257 | 6,385 | 6,706 | 6,188 | 6,268 | 6,174 | ..    | ..    | ..    | ..    | ..    | ..    | ..           |

**Table 5-11**  
**Disposition of eggs by province, quantity and value by province — British Columbia**

|                                           | Jan.   | Feb.  | Mar.   | Apr.   | May    | June   | July   | Aug.   | Sept.  | Oct.   | Nov.  | Dec.  | Annual total |
|-------------------------------------------|--------|-------|--------|--------|--------|--------|--------|--------|--------|--------|-------|-------|--------------|
| quantity, in thousands of dozens          |        |       |        |        |        |        |        |        |        |        |       |       |              |
| <b>Sold for consumption</b>               |        |       |        |        |        |        |        |        |        |        |       |       |              |
| 2008                                      | 5,291  | 4,965 | 5,146  | 5,296  | 5,638  | 5,221  | 5,472  | 5,298  | 5,025  | 5,294  | 4,920 | 5,123 | 62,689       |
| 2009                                      | 5,664  | 4,982 | 5,232  | 5,290  | 5,504  | 5,309  | 5,453  | 5,249  | 4,963  | 5,483  | 5,121 | 5,340 | 63,590       |
| 2010                                      | 5,570  | 4,978 | 5,419  | 5,274  | 5,550  | 5,161  | ..     | ..     | ..     | ..     | ..    | ..    | ..           |
| <b>Sold for hatching</b>                  |        |       |        |        |        |        |        |        |        |        |       |       |              |
| 2008                                      | 796    | 761   | 806    | 796    | 846    | 807    | 836    | 712    | 764    | 751    | 698   | 729   | 9,303        |
| 2009                                      | 811    | 705   | 825    | 735    | 775    | 802    | 773    | 663    | 700    | 707    | 691   | 734   | 8,921        |
| 2010                                      | 701    | 714   | 831    | 693    | 735    | 795    | ..     | ..     | ..     | ..     | ..    | ..    | ..           |
| <b>Home consumption</b>                   |        |       |        |        |        |        |        |        |        |        |       |       |              |
| 2008                                      | 19     | 19    | 19     | 19     | 19     | 19     | 19     | 19     | 19     | 19     | 19    | 19    | 228          |
| 2009                                      | 19     | 19    | 19     | 19     | 19     | 19     | 19     | 19     | 19     | 19     | 19    | 19    | 228          |
| 2010                                      | 19     | 19    | 19     | 19     | 19     | 19     | ..     | ..     | ..     | ..     | ..    | ..    | ..           |
| <b>Leakers and rejects</b>                |        |       |        |        |        |        |        |        |        |        |       |       |              |
| 2008                                      | 121    | 114   | 119    | 122    | 129    | 120    | 126    | 120    | 115    | 121    | 112   | 117   | 1,436        |
| 2009                                      | 129    | 113   | 121    | 120    | 125    | 122    | 124    | 118    | 113    | 123    | 116   | 121   | 1,445        |
| 2010                                      | 125    | 114   | 125    | 119    | 125    | 119    | ..     | ..     | ..     | ..     | ..    | ..    | ..           |
| <b>Total disposition of eggs</b>          |        |       |        |        |        |        |        |        |        |        |       |       |              |
| 2008                                      | 6,227  | 5,859 | 6,090  | 6,233  | 6,632  | 6,167  | 6,453  | 6,149  | 5,923  | 6,185  | 5,749 | 5,988 | 73,656       |
| 2009                                      | 6,623  | 5,819 | 6,197  | 6,164  | 6,423  | 6,252  | 6,369  | 6,049  | 5,795  | 6,332  | 5,947 | 6,214 | 74,184       |
| 2010                                      | 6,415  | 5,825 | 6,394  | 6,105  | 6,429  | 6,094  | ..     | ..     | ..     | ..     | ..    | ..    | ..           |
| value, in thousands of dollars            |        |       |        |        |        |        |        |        |        |        |       |       |              |
| <b>Sold for consumption</b>               |        |       |        |        |        |        |        |        |        |        |       |       |              |
| 2008                                      | 6,161  | 5,849 | 6,268  | 6,549  | 7,026  | 6,510  | 6,927  | 6,811  | 6,511  | 6,928  | 6,247 | 6,504 | 78,291       |
| 2009                                      | 6,998  | 5,985 | 6,287  | 6,355  | 6,397  | 6,212  | 6,384  | 6,149  | 5,815  | 6,421  | 5,999 | 6,252 | 75,254       |
| 2010                                      | 6,518  | 6,257 | 6,813  | 6,630  | 6,937  | 6,453  | ..     | ..     | ..     | ..     | ..    | ..    | ..           |
| <b>Sold for hatching</b>                  |        |       |        |        |        |        |        |        |        |        |       |       |              |
| 2008                                      | 3,405  | 3,273 | 3,467  | 3,527  | 3,746  | 3,666  | 3,862  | 3,291  | 3,604  | 3,547  | 3,257 | 3,406 | 42,051       |
| 2009                                      | 3,602  | 3,128 | 3,802  | 3,388  | 3,606  | 3,727  | 3,658  | 3,136  | 3,409  | 3,359  | 3,282 | 3,496 | 41,593       |
| 2010                                      | 3,339  | 3,398 | 3,954  | 3,229  | 3,390  | 3,663  | ..     | ..     | ..     | ..     | ..    | ..    | ..           |
| <b>Home consumption</b>                   |        |       |        |        |        |        |        |        |        |        |       |       |              |
| 2008                                      | 28     | 28    | 29     | 30     | 30     | 30     | 30     | 31     | 30     | 31     | 30    | 30    | 357          |
| 2009                                      | 29     | 29    | 29     | 29     | 28     | 28     | 28     | 28     | 28     | 28     | 28    | 28    | 340          |
| 2010                                      | 28     | 30    | 30     | 30     | 29     | 29     | ..     | ..     | ..     | ..     | ..    | ..    | ..           |
| <b>Total value of disposition of eggs</b> |        |       |        |        |        |        |        |        |        |        |       |       |              |
| 2008                                      | 9,594  | 9,150 | 9,764  | 10,106 | 10,802 | 10,206 | 10,819 | 10,133 | 10,145 | 10,506 | 9,534 | 9,940 | 120,699      |
| 2009                                      | 10,629 | 9,142 | 10,118 | 9,772  | 10,031 | 9,967  | 10,070 | 9,313  | 9,252  | 9,808  | 9,309 | 9,776 | 117,187      |
| 2010                                      | 9,885  | 9,685 | 10,797 | 9,889  | 10,356 | 10,145 | ..     | ..     | ..     | ..     | ..    | ..    | ..           |



**Table 6**  
**Stocks of frozen eggs and edible dried eggs, Canada**

|                               | Jan.   | Feb.  | Mar.  | Apr.  | May   | June  | July  | Aug.  | Sept. | Oct.  | Nov.  | Dec.  |
|-------------------------------|--------|-------|-------|-------|-------|-------|-------|-------|-------|-------|-------|-------|
|                               | tonnes |       |       |       |       |       |       |       |       |       |       |       |
| <b>Whole eggs, total</b>      |        |       |       |       |       |       |       |       |       |       |       |       |
| 2007                          | 567    | 1,049 | 965   | 1,120 | 1,290 | 1,274 | 1,226 | 1,031 | 786   | 886   | 857   | 847   |
| 2008                          | 726    | 833   | 710   | 670   | 743   | 790   | 896   | 1,211 | 1,215 | 891   | 999   | 819   |
| 2009                          | 804    | 1,039 | 1,097 | 1,055 | 933   | 974   | 1,285 | 1,061 | 1,320 | 1,156 | 1,389 | 1,281 |
| 2010                          | 1,382  | 1,611 | 1,715 | 1,467 | 1,255 | 1,133 | ..    | ..    | ..    | ..    | ..    | ..    |
| <b>Yolk, total</b>            |        |       |       |       |       |       |       |       |       |       |       |       |
| 2007                          | 639    | 849   | 938   | 1,054 | 718   | 710   | 608   | 879   | 1,007 | 850   | 809   | 766   |
| 2008                          | 795    | 747   | 769   | 490   | 442   | 409   | 433   | 499   | 458   | 460   | 436   | 327   |
| 2009                          | 408    | 512   | 670   | 556   | 479   | 465   | 571   | 424   | 368   | 402   | 428   | 423   |
| 2010                          | 619    | 779   | 850   | 890   | 717   | 585   | ..    | ..    | ..    | ..    | ..    | ..    |
| <b>Whites, total</b>          |        |       |       |       |       |       |       |       |       |       |       |       |
| 2007                          | 79     | 120   | 78    | 90    | 93    | 121   | 224   | 144   | 160   | 126   | 152   | 145   |
| 2008                          | 112    | 95    | 89    | 86    | 120   | 168   | 221   | 267   | 243   | 217   | 178   | 151   |
| 2009                          | 98     | 104   | 97    | 88    | 117   | 175   | 184   | 129   | 176   | 148   | 94    | 79    |
| 2010                          | 63     | 67    | 79    | 62    | 92    | 88    | ..    | ..    | ..    | ..    | ..    | ..    |
| <b>Edible dried eggs</b>      |        |       |       |       |       |       |       |       |       |       |       |       |
| 2007                          | 789    | 795   | 754   | 724   | 673   | 667   | 591   | 585   | 547   | 553   | 449   | 583   |
| 2008                          | 545    | 615   | 648   | 596   | 587   | 500   | 538   | 609   | 671   | 519   | 530   | 635   |
| 2009                          | 581    | 661   | 788   | 736   | 660   | 623   | 618   | 726   | 629   | 674   | 739   | 733   |
| 2010                          | 811    | 805   | 901   | 742   | 722   | 751   | ..    | ..    | ..    | ..    | ..    | ..    |
| <b>Dried, whole and mixes</b> |        |       |       |       |       |       |       |       |       |       |       |       |
| 2007                          | 172    | 188   | 243   | 256   | 209   | 185   | 208   | 217   | 126   | 125   | 147   | 102   |
| 2008                          | 150    | 146   | 127   | 140   | 212   | 206   | 194   | 262   | 243   | 198   | 125   | 117   |
| 2009                          | 217    | 256   | 304   | 150   | 97    | 256   | 126   | 135   | 124   | 165   | 185   | 163   |
| 2010                          | 161    | 138   | 237   | 226   | 262   | 308   | ..    | ..    | ..    | ..    | ..    | ..    |
| <b>Dried, yolk and mixes</b>  |        |       |       |       |       |       |       |       |       |       |       |       |
| 2007                          | 137    | 161   | 108   | 124   | 149   | 220   | 145   | 89    | 105   | 82    | 57    | 132   |
| 2008                          | 89     | 99    | 105   | 133   | 128   | 72    | 138   | 146   | 218   | 174   | 205   | 232   |
| 2009                          | 144    | 159   | 209   | 248   | 229   | 240   | 171   | 234   | 153   | 216   | 270   | 220   |
| 2010                          | 219    | 254   | 326   | 288   | 220   | 226   | ..    | ..    | ..    | ..    | ..    | ..    |
| <b>Dried albumen</b>          |        |       |       |       |       |       |       |       |       |       |       |       |
| 2007                          | 480    | 446   | 402   | 344   | 315   | 261   | 238   | 280   | 317   | 346   | 246   | 348   |
| 2008                          | 306    | 369   | 417   | 322   | 246   | 222   | 207   | 201   | 209   | 148   | 199   | 286   |
| 2009                          | 220    | 247   | 276   | 338   | 334   | 127   | 321   | 356   | 352   | 293   | 284   | 350   |
| 2010                          | 432    | 413   | 338   | 228   | 239   | 218   | ..    | ..    | ..    | ..    | ..    | ..    |

**Table 7**  
**Supply and disposition of eggs**

|                                                           | 2005                | 2006    | 2007    | 2008    | 2009    |
|-----------------------------------------------------------|---------------------|---------|---------|---------|---------|
|                                                           | thousands of dozens |         |         |         |         |
| Production                                                | 587,137             | 604,607 | 607,853 | 616,922 | 620,286 |
| Beginning stocks                                          | 12,230              | 10,830  | 11,087  | 8,825   | 7,703   |
| Imports                                                   | 49,603              | 45,173  | 36,499  | 42,926  | 63,632  |
| Total supply                                              | 648,970             | 660,610 | 655,438 | 668,673 | 691,621 |
| Exports                                                   | 60,442              | 50,641  | 62,621  | 47,110  | 65,903  |
| Used for hatching                                         | 60,261              | 59,278  | 60,399  | 60,774  | 60,162  |
| Leakers and rejects                                       | 11,450              | 11,788  | 11,857  | 12,031  | 12,095  |
| Ending stocks                                             | 10,830              | 11,087  | 8,825   | 7,703   | 12,047  |
| Net supply                                                | 505,988             | 527,815 | 511,736 | 541,055 | 541,414 |
|                                                           | dozens              |         |         |         |         |
| Food available per person                                 | 15.7                | 16.2    | 15.5    | 16.2    | 16.1    |
| Food available per person, adjusted for loss <sup>1</sup> | 12.4                | 12.8    | 12.3    | 12.8    | 12.7    |

1. Experimental, use with caution. The data have been adjusted for retail, household, cooking and plate loss.

**Table 8**  
Average prices of eggs sold for consumption in Canada by month

|      | Jan.              | Feb. | Mar. | Apr. | May  | June | July | Aug. | Sept. | Oct. | Nov. | Dec. |
|------|-------------------|------|------|------|------|------|------|------|-------|------|------|------|
|      | dollars per dozen |      |      |      |      |      |      |      |       |      |      |      |
| 2002 | 1.06              | 1.07 | 1.06 | 1.06 | 1.06 | 1.06 | 1.07 | 1.10 | 1.08  | 1.09 | 1.08 | 1.11 |
| 2003 | 1.08              | 1.09 | 1.08 | 1.09 | 1.09 | 1.09 | 1.10 | 1.10 | 1.10  | 1.10 | 1.10 | 1.09 |
| 2004 | 1.10              | 1.10 | 1.10 | 1.12 | 1.13 | 1.15 | 1.16 | 1.18 | 1.17  | 1.15 | 1.15 | 1.13 |
| 2005 | 1.03              | 1.01 | 1.02 | 1.02 | 1.02 | 1.02 | 1.02 | 1.03 | 1.03  | 1.03 | 1.04 | 1.04 |
| 2006 | 1.02              | 1.04 | 1.04 | 1.05 | 1.05 | 1.04 | 1.05 | 1.05 | 1.05  | 1.05 | 1.05 | 1.04 |
| 2007 | 0.98              | 1.03 | 1.05 | 1.05 | 1.06 | 1.06 | 1.07 | 1.09 | 1.08  | 1.09 | 1.10 | 1.09 |
| 2008 | 1.09              | 1.10 | 1.10 | 1.12 | 1.13 | 1.13 | 1.15 | 1.18 | 1.18  | 1.19 | 1.16 | 1.16 |
| 2009 | 1.11              | 1.09 | 1.09 | 1.09 | 1.08 | 1.08 | 1.08 | 1.09 | 1.09  | 1.10 | 1.09 | 1.09 |
| 2010 | 1.08              | 1.16 | 1.16 | 1.16 | 1.15 | 1.15 | ..   | ..   | ..    | ..   | ..   | ..   |

Note(s): Price received by producer.

**Table 9**  
Report of processed eggs production, Canada

|                    | Whole egg  | Yolk      | Albumen    | Total processed egg |
|--------------------|------------|-----------|------------|---------------------|
|                    | kilograms  |           |            |                     |
| <b>Total break</b> |            |           |            |                     |
| 2007               | 27,695,130 | 5,875,001 | 12,827,153 | 46,397,284          |
| 2008               | 34,267,868 | 4,023,331 | 10,182,905 | 46,766,277          |
| 2009               | 30,322,556 | 5,667,835 | 13,333,701 | 49,324,092          |
| <b>Frozen eggs</b> |            |           |            |                     |
| 2007               | 2,361,746  | 2,302,002 | 570,843    | 5,234,591           |
| 2008               | 2,370,319  | 1,500,867 | 479,197    | 4,350,383           |
| 2009               | 2,570,696  | 1,576,639 | 590,743    | 4,738,078           |
| <b>Liquid eggs</b> |            |           |            |                     |
| 2007               | 22,314,995 | 1,478,737 | 7,521,176  | 31,314,908          |
| 2008               | 19,654,306 | 766,769   | 5,959,987  | 26,381,062          |
| 2009               | 22,826,311 | 1,074,523 | 7,519,162  | 31,419,996          |
| <b>Dried eggs</b>  |            |           |            |                     |
| 2007               | x          | x         | x          | x                   |
| 2008               | x          | x         | x          | x                   |
| 2009               | x          | x         | x          | x                   |

# Poultry meat production and value

---

## Concepts

Poultry meat production and value are estimated for chicken meat (including stewing hens) and turkey meat sold by producers as well as that consumed by these producers. Production is measured in both the number of birds slaughtered and the eviscerated weight of the slaughtered birds. Estimates of quantities sold consist of commercial and non-commercial slaughter and are made at the provincial level. Commercial slaughter is adjusted for inter-provincial and international movement. Commercial slaughter includes all birds that have been slaughtered in registered slaughter houses while non-commercial slaughter consists of any birds that may be slaughtered on farms. Poultry meat production is valued at the average price per kilogram (eviscerated weight basis) received by producers. Prices include any bonuses and premiums which can be attributed to specific commodities and exclude fees deducted before the producer is paid (e.g. storage, transport, and administration costs).

Home consumption is the amount of poultry meat available for consumption by producers and their immediate families. This amount is valued at market prices as it represents the income producers would have received had the product been sold.

## Methods

The major administrative source of data for poultry meat production and value is Agriculture and Agri-Food Canada. Inspectors from the Canadian Food Inspection Agency (CFIA) collect quantity data while inspecting meat at processing plants as legislated under the *Meat Inspection Act*. Unless specified, these data are used as published, without further adjustment. Commercial slaughter represents all birds slaughtered in registered processing plants. The quantity and weight of all birds slaughtered in these facilities are reported to and published by AAFC.

Non-commercial slaughter is estimated based on data provided weekly to AAFC by registered hatcheries on the placement of chicks in small lots, intended to produce meat. The placement data are adjusted for death loss and birds kept for laying to arrive at an estimate of chickens that reach maturity. Estimates of both death loss and the time required for chicks to reach maturity are obtained from industry specialists. Non-commercial slaughter is further divided into home consumption and birds sold. Home consumption is calculated by multiplying quantity of food available for consumption of the given poultry meat by the human population of farms producing that kind of poultry.

The human population on farms is derived from the linkage of the Agriculture and the Population Censuses.

Two prices obtained from registered processing plants, and published by AAFC, are used to calculate the value of chicken meat production: one for chickens weighing less than 2.3 kg and another for those weighing 2.3 kg and over. Prices for the corresponding categories are weighted by the quantity produced to obtain the total value. The price for chickens weighing 2.3 kilograms and over is used in calculating the value of production for chickens slaughtered on farms (including home consumption).

Data on stewing hen production and prices are obtained from registered processing plant reports provided to AAFC. No calculation is made for stewing hens slaughtered on farms since the amount is considered negligible. Home consumption is calculated in the same manner as the chicken meat production.

Turkey meat production is based on birds slaughtered in registered slaughter houses, as reported by AAFC, and non-commercial slaughter. Non-commercial slaughter, turkeys slaughtered on farms, is estimated using data on turkey inventories from the most recent Census of Agriculture. Home consumption is calculated in the same manner as the chicken meat production.

Two prices are used to determine the value of turkey meat production: one for turkeys weighing less than 5.0 kg and another for those weighing 5.0 kg and over. Prices for the corresponding categories are multiplied by the quantity produced to obtain their value.

### **Data quality**

Data on number of birds sold, eviscerated weight and value are obtained through administrative sources. Producers are paid for the birds which they sell through registered slaughter houses on the basis of these administrative records. Because of this process, the quality of the administrative data is deemed to be high. Registered slaughter houses account for approximately 99% of total poultry production. This implies that total production values are also good. Administrative sources are subject to non-sampling errors such as omissions, duplications and mistakes in reporting, recording and processing the data. The effects of these errors cannot be measured directly.

Although no systematic revisions are undertaken for poultry meat data, revisions that do occur reflect updates resulting from late entries and corrections due to misclassification and data entry errors. Overall, the changes between the original and revised numbers are very small (e.g. less than 1% for chicken and turkey).

# Egg production and value

---

## Concepts

Total egg production in Canada and the provinces includes all eggs sold for consumption, consumed by producers, sold for hatching, leakers and rejects. Production from registered, non-registered as well as hatchery supply flocks are included in the estimates.

The value of egg production is calculated at the provincial level using different prices for eggs produced by the three different types of flocks listed above. These prices include any bonuses and premiums which can be attributed to specific commodities and exclude fees deducted before the producer is paid (e.g. storage, transport and administration costs).

Egg production is derived using average layer numbers and their derived rates of lay. Laying hens include all layers 19 weeks and older except for layers in hatchery supply flocks where layers are 26 weeks and older. Layer numbers and average rates of lay are obtained for the three types of operations (registered flocks, non-registered flocks and hatchery supply flocks).

## Methods

Registered flocks have to be registered with and provide information to provincial egg marketing boards. Layer numbers in registered flocks are supplied by the CEMA, the regulatory board for the egg producing industry. The agency, in turn, receives data from the provincial egg marketing boards. These data are used directly in the estimates without adjustments.

Non-registered flocks are those with fewer birds than the limits set by the provincial egg marketing boards. These limits vary by province and can range from 100 to 500 birds. Layer numbers for the non-registered flocks are estimated using Census data.

Hatchery supply flocks produce hatching eggs for both egg and meat type birds. Layers in hatchery supply flocks are estimated by Statistics Canada based on the number of birds (broilers) provided by Canadian Broiler Hatching Egg Marketing Agency, information on egg sets from CEMA and an average rate of lay for each type of bird.

Rates of lay, at the provincial level, for registered and non-registered flocks and hatchery supply flocks are estimated by industry specialists.

Estimates of all layers, rates of lay and egg production are prepared monthly using administrative data. Layers in registered flocks account for the bulk of the layer population and these data are available weekly from the CEMA.

Monthly estimates for non-registered flocks are made using historical seasonal patterns. Rates of lay do not fluctuate dramatically.

Shifts on rates of lay are made on the basis of monthly egg gradings collected by CEMA from registered grading stations.

The value of egg production for registered flocks is calculated using prices provided by CEMA, which regulates all prices paid to producers. Prices for the non-registered flocks are calculated based on industry information. In the case of eggs produced by the hatchery supply flock, all eggs are valued at prices paid to broiler egg producers as provided by the Canadian Broiler Hatching Egg Marketing Agency. Production estimates are simply multiplied by the prices to obtain the total value of production.

The quality of layer numbers in registered flocks is deemed to be high since the number of laying hens in these flocks is set by quota allocation and the flocks are subject to regular audits. The vast majority of layers are found in the registered flocks and thus, total layer estimates can also be considered to be of high quality. Based on the 2001 Census of Agriculture, more than 90% of all layers in each province were in registered flocks except for Saskatchewan and Alberta, where the totals were 79% and 86% respectively.

## Revisions

Layer numbers in registered flocks are collected through the CEMA and are subject to minor revisions. Monthly layer estimates in non-registered flocks are revised, if necessary, after the results of the Census of Agriculture are available.

Rates of lay for both registered and non-registered flocks are assessed monthly based on administrative data published by CEMA on eggs graded at registered stations.

# Food Available - Poultry and Eggs

---

## Concepts

Statistics Canada's Agriculture Division produces data indicating the amount of food available for consumption along with estimated quantities of food available, adjusted for losses.

The amount of food available per person represents what is available for consumption on average for the total Canadian population. The estimates do not indicate total poultry and egg supplies actually consumed by an individual or specific group of individuals, since estimates are not calculated for waste or spoilage during transportation at the retail level, in households, private institutions or restaurants.

The estimated quantities of food available, adjusted for losses, represent the amount of food available per person data that have been adjusted to account for retail, household, cooking and plate loss. These data are considered experimental in nature and should be used with caution.

## Methods

A residual approach is used in calculating quantities of poultry meat and eggs available for human consumption. Annual balance sheets are prepared to determine the consumption levels. Total supply is estimated by adding beginning stocks, annual production and imports. Exports and ending stocks are subtracted from total supply to estimate the net supply. Poultry meat export and import numbers are obtained from AAFC. The amount of food available per person is determined by dividing net supply by the total Canadian population at July 1 each year. Population numbers are obtained from the Demography Division of Statistics Canada. To estimate the amount of food available, adjusted for losses, factors are applied to the amount of food available per person data to account for retail, household, cooking and plate loss.

Net supply for eggs is obtained by subtracting exports, eggs used for hatching, leakers and rejects from the total supply. A revised methodology was introduced in 1986 to calculate the quantity of eggs available for consumption where 1.95% of total egg production was subtracted to account for leakers and rejects. Import and export data are supplied by the International Trade Division of Statistics Canada. Net supply is then divided by the July 1 population of Canada to obtain the quantity available per person. To estimate the amount of food available, adjusted for losses, factors are applied to the amount of food available per person data to account for retail, household, cooking and plate loss.

# Appendix I

---

## Glossary of terms

**Administrative data:** data that are collected by public or private agencies or organizations in the administration of programs or legislation.

**Broilers:** chickens that are being raised for meat production.

**Egg sets:** fertilized eggs in hatcheries that are to hatch into chicks, either to replace laying hens or to be raised for meat production.

**Eviscerated weight:** the weight of a bird that has not been de-boned but has had its head, feathers, feet and innards removed.

**Food available:** represents what is available for consumption on average for the total Canadian population. Net supply is divided by the July 1 Canadian population to arrive at the quantity available. The estimates do not indicate quantities actually consumed by an individual or specific group of individuals, since estimates are not calculated for waste or spoilage during transportation at the retail level, in households, private institutions or restaurants.

**Food available, adjusted for losses:** the estimated quantities of food available adjusted for losses represent the quantity of food available data that have been adjusted to account for retail, household, cooking and plate loss. These data are considered experimental in nature and should be used with caution.

**Hatchery supply flock:** consists of laying hens which produce eggs that will be hatched into chicks. These chicks will either become laying hens or be raised for meat production.

**Leakers and rejects:** eggs that do not meet the lowest standard grading requirements.

**Stewing hens:** laying hens which have completed their laying cycle and are slaughtered for meat.