

Comparing Canada's Health Care Systems Internationally

Benefits and Challenges

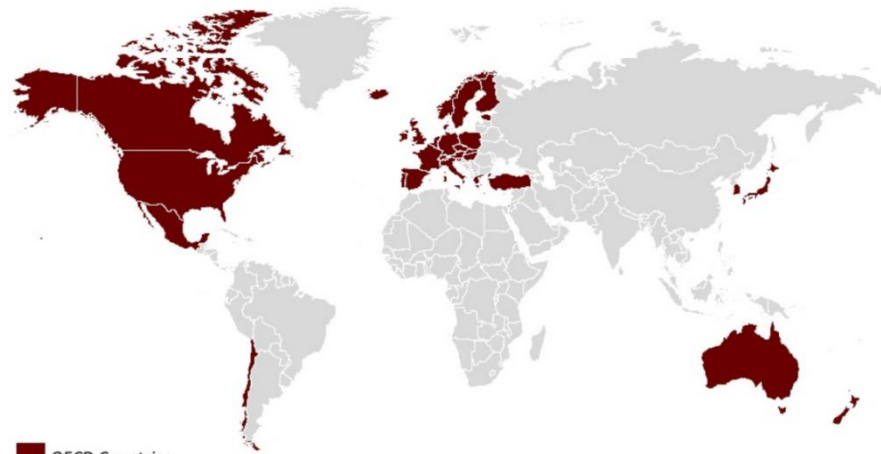
Canadian Institute for Health Information

GERMANY IS THE BEST COUNTRY IN THE WORLD, ACCORDING TO NEW SURVEY

Dana Lauren Jan 20, 2016 Top Stories 0 Comments

LIK





OECD Countries



The COMMONWEALTH FUND



Timely access to primary health care

Results from The Commonwealth Fund 2014 International Health Policy Survey of Older Adults (age 55+) show that Canadians continue to experience challenges getting medical care when they need it.



2007
and
2014



53% of older Canadians waited 2 or more days to see a doctor or nurse the last time they needed medical attention.

This was the same percentage as in 2007.



Nearly 1 in 3 waited 6 or more days to see a doctor or nurse the last time they needed care.



All 10 provinces reported significantly longer wait times than the international average.



More than half of older adults reported difficulties getting medical care on evenings or weekends without going to the emergency department.



More than 1 in 3 (37%) older Canadians visited the emergency department for a condition that could have been treated by their regular doctor.

Benchmarking Canada's Health System: International Comparisons

In Focus: Bringing It All Together—Lung Cancer Mortality

This report presents a wide range of indicators that measure diverse dimensions of health system performance. Many relate to each other and can be used to explain Canada's overall performance. This In Focus section explores Canada's performance on lung cancer mortality, linking other indicators to provide insight into the future of lung cancer in Canada.

International comparison @ CIHI: reports, infographics, eTools

January 23, 2014

International Comparisons: A Focus on Quality of Care

Executive Summary

Quality of health care services is a concern for many countries in the world, including Canada. Although each country is unique, policy-makers, practitioners and service users may benefit from international comparisons, which are an insightful tool that can help establish priorities for improvement, set goals and motivate stakeholders to act.



Analysis in Brief

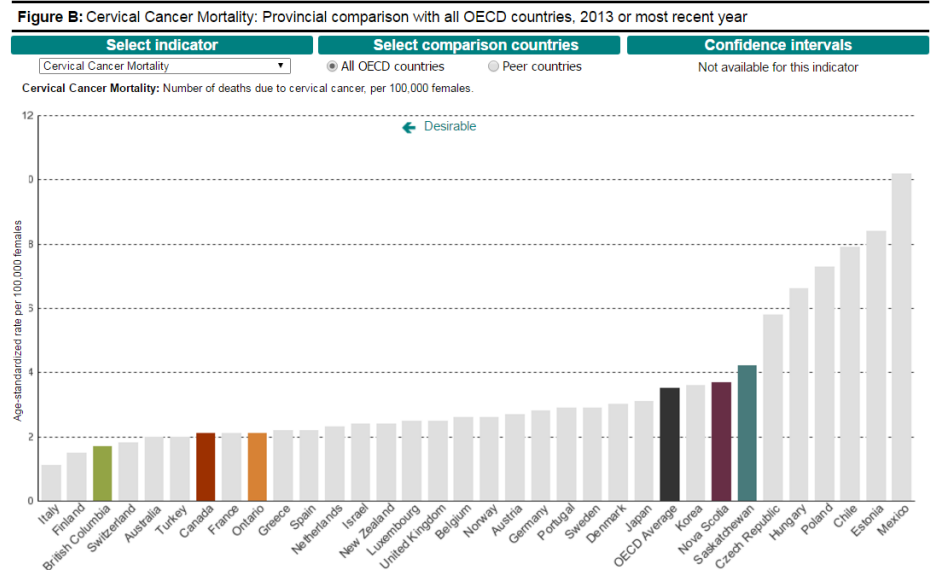
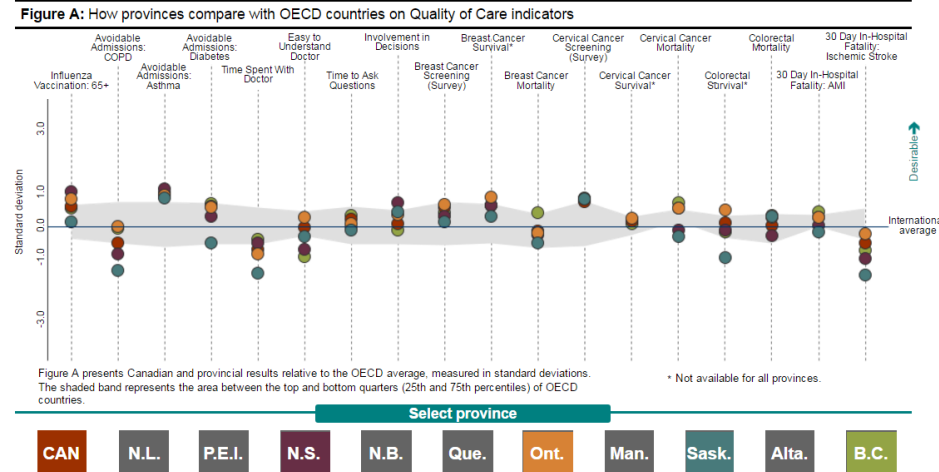
Health System
Performance

Our Vision
Better data. Better decisions.
Healthier Canadians.

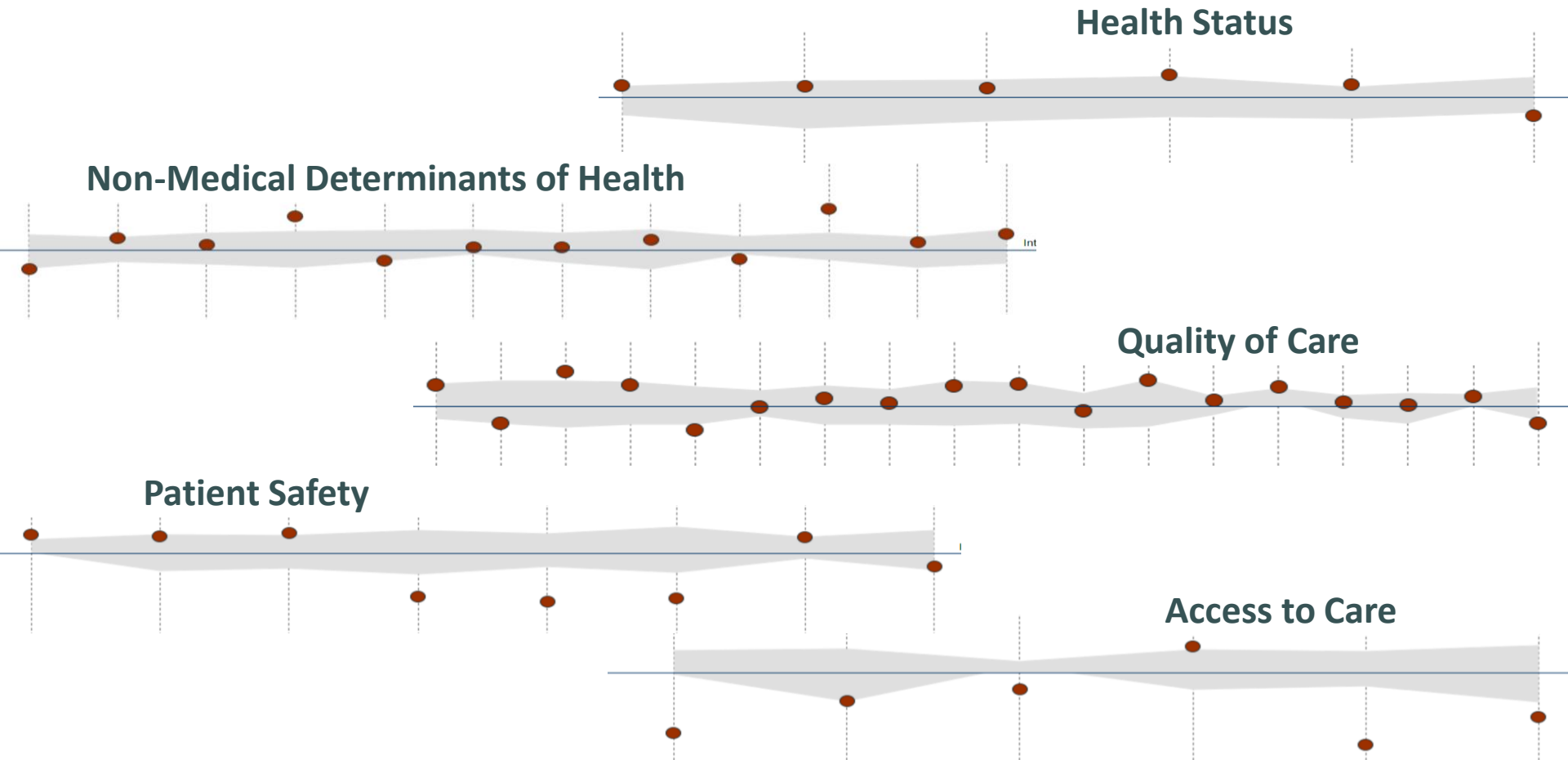


International Comparisons: A Focus on Diabetes

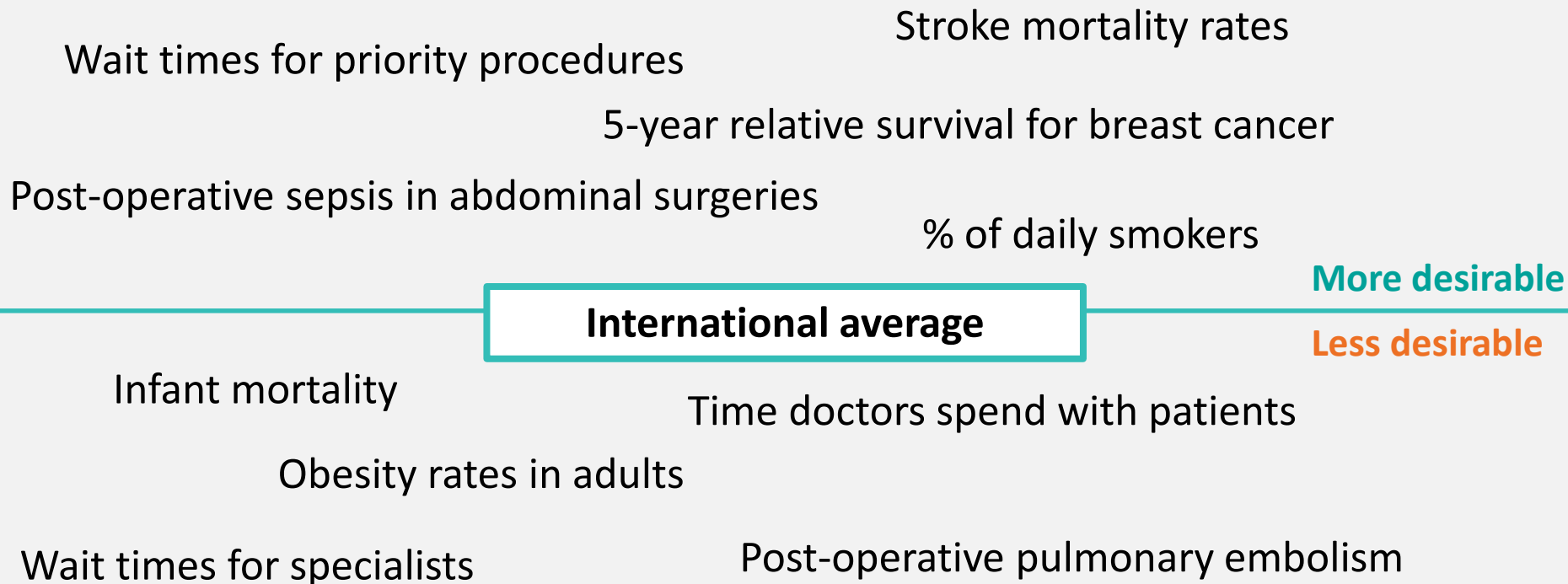
<https://www.cihi.ca/en/health-system-performance/performance-reporting/international/oecd-interactive-tool-home>



Canada vs. Other Countries at a Glance



How Canada Compares





The
**COMMONWEALTH
FUND**

Sources of data



Canadian Institute
for Health Information

Institut canadien
d'information sur la santé



Statistics Canada



Canada 



Challenges





**What indicators are really saying?
Can countries be compared?**

One view

Figure A: How provinces compare with OECD countries on Health Status indicators

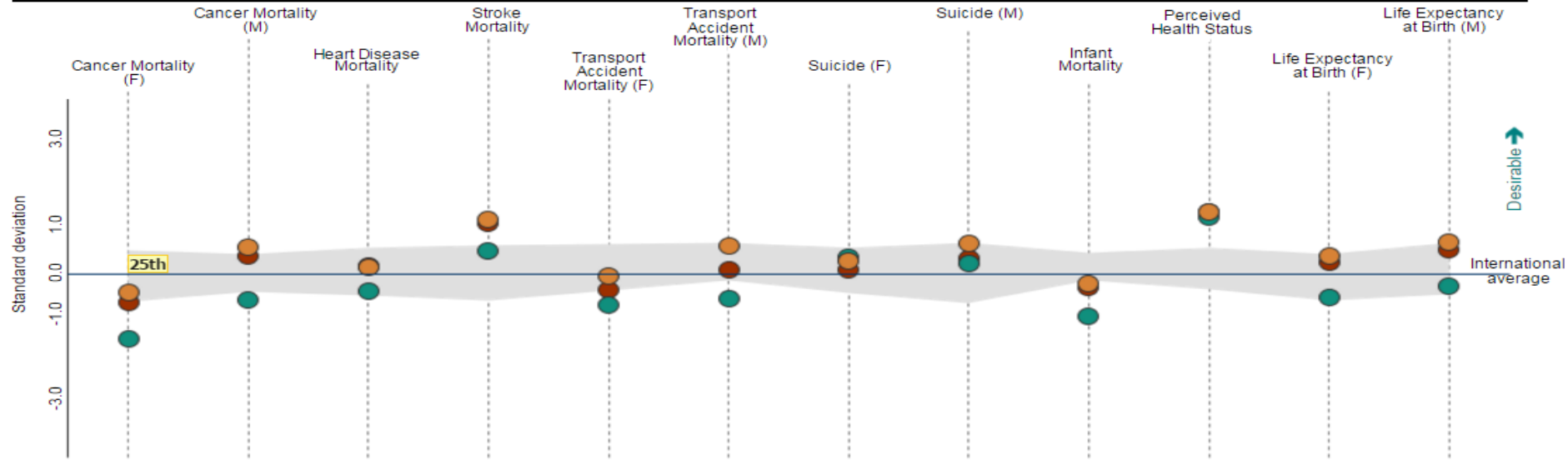


Figure A presents Canadian and provincial results relative to the OECD average, measured in standard deviations. The shaded band represents the area between the top and bottom quarters (25th and 75th percentiles) of OECD countries.

Select province

CAN

N.L.

P.E.I.

N.S.

N.B.

Que.

Ont.

Man.

Sask.

Alta.

B.C.

Peer countries

Choose a province:

CAN

N.L.

P.E.I.

N.S.

N.B.

Que.

Ont.

Man.

Sask.

Alta.

B.C.

Health System Descriptors for Peer Countries, Canada and Provinces, 2013 (or Nearest Year)

Health System Descriptor	Canada (Year)	Peer Countries								OECD Standard Deviation	OECD Average (Range)
		Australia	France	Germany	Netherlands	New Zealand	Sweden	United Kingdom	United States		
Population											
Total Population (Millions of People)	35.2 (2013)	23.1	63.8	82.1	16.8	4.5	9.5	62.6	316.1	59.7	37.0 (0.3–316.1)
Population Density (Inhabitants per km²)	3.8 (2011)	2.9	116.0	228.9	493.4	16.5	23.0	259.9	34		
Percentage of Population Older Than 65 (%)	15.3 (2013)	14.4	17.9	20.8	17.1	14.2	20.1	17.0	14		
Income Inequality (Gini Coefficient)	0.32 (2011)	N/A	0.31	0.29	N/A	0.32	0.27	N/A	0.3		
Spending											
Current Health Spending	4,351	3,866	4,124	4,819	5,131	3,328	4,904	3,235	8,7		

Figure B: Avoidable Admissions: Diabetes: Prov

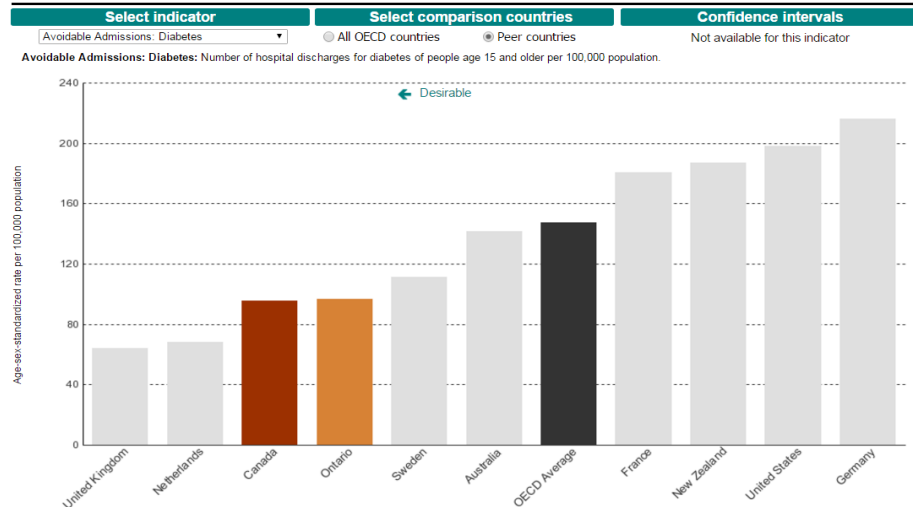
Select Indicator

Avoidable Admissions: Diabetes

Avoidable Admissions: Diabetes: Number of hospital discharges per 10,000 population

<

Figure B: Avoidable Admissions: Diabetes: Provincial comparison with peer countries, 2013 or most recent year



Similar CIHI's indicators



	OECD indicators	CIHI indicators
Methodology specification	OECD methodologies	CIHI methodologies
Risk adjustments	No risk adjustments	Risk adjusted
Data years	1 year of data	For some indicators, multiple years of data were used to reduce year-to-year variability
Age-sex standardization	OECD standard population	Canadian census of population



Big picture,
focus,
inspire change,
cross-country learning



More information at

- International Comparisons: A Focus on Diabetes (2015): https://secure.cihi.ca/free_products/oecd-diabetes-report-2015_en.pdf
- International Comparisons: A Focus on Quality of Care (2014):
<https://secure.cihi.ca/estore/productFamily.htm?locale=en&pf=PFC2451&lang=en&media=0>
- Benchmarking Canada's Health System: International Comparisons (2013):
<https://secure.cihi.ca/estore/productFamily.htm?locale=en&pf=PFC2416>
- Learning From the Best: Benchmarking Canada's Health System (2011):
<https://secure.cihi.ca/estore/productFamily.htm?pf=PFC1676&lang=en&media=0>
- eTool: <https://www.cihi.ca/en/health-system-performance/performance-reporting/international/oecd-interactive-tool-home>



Canadian Institute for Health Information

Better data. Better decisions. Healthier Canadians.

cihi.ca

kgapanenko@cihi.ca;

hsr@cihi.ca



@cihi_icis