
Canadian Automated Export Declaration Data Loading Module (CAED_DLM)



Version 18.0
User Guide

TABLE OF CONTENTS

BACKGROUND INFORMATION 3

INSTALLING THE DATA LOADING MODULE 5

DATA LOADING MODULE INPUT FILE (TEXT FILE)..... 5

NAVIGATING THE DATA LOADING MODULE 6

 STARTING THE DATA LOADING MODULE..... 6

 ACTIVATION CODE..... 6

 WELCOME SCREEN 7

 THE MAIN SCREEN OF THE DATA LOADING MODULE 8

Input File Location..... 8

CAED Database Location 9

CAED Code Description Lists.....10

HS Code Table.....10

Validation Rules11

Read Flat File Button.....11

Map and Validate Button11

Manage Mappings13

Load in CAED Button13

Exit Button.....13

APPENDIX A – INPUT FILE RECORD LAYOUT.....14

 HEADER RECORD LAYOUT.....14

 DETAIL RECORD LAYOUT.....16

 PERMIT RECORD LAYOUT17

 CONTAINER RECORD LAYOUT.....17

 REFERENCE RECORD LAYOUT17

APPENDIX B – ERROR GLOSSARY.....18

Header Record Error List.....19

Detail Record Error List.....21

Container Record Error List22

Permit Record Error List.....22

Other Error List.....23

APPENDIX C – INTERPRETING THE DATA LOADING MODULE ERROR REPORT.....24

 EXAMPLE REPORT:24

General Information.....24

 1) *Form Key Column*24

 2) *Line Number Column*24

 3) *The Field No. Column*25

 4) *The Field Description*.....25

 5) *The Error Number*.....25

 6) *The Error Message*.....25

 7) *The Data Column*25

 8) *The Data Size*25

 9) *The Max Field Size*.....25

APPENDIX D – SAMPLE INPUT FILE26

Input.txt.....26

APPENDIX E – CHANGES TO THE INPUT FILE LAYOUT AND VALIDATION PROCESS.....27

Background Information

Why was the Data Loading Module Developed?

Originally, the Exporting community wished to have a mechanism that allowed them to report their Non-U.S. exports electronically, instead of by the existing paper based method. To this end, the **CAED Program** was developed and introduced.

In the CAED program, a windows based software (which allows completion and electronic submission of the B13A) was developed and distributed to interested participants. CAED participants could use the software to complete and transmit Export Declarations (via the Internet) on a shipment by shipment basis, from their place of business.

However, some exporters indicated that although they liked the concept of the CAED software, it constituted a “duplication of work” on their part, since all the information required for the B13A had already been entered into their current legacy system. It was also stated that given the number of declarations completed on a daily basis, it did not make sound business sense to have to “re-do” their Export Declarations just so they could submit them electronically.

The exporting community then suggested that in addition to the CAED software, we provide an option which would allow an organization to use the information already stored in their legacy system as input to the electronic Export Declaration. With this as a goal, the Data Loading Module was developed.

Who should use this Module?

- Exporters/Agents who wish to electronically submit their Export Declarations to the Federal Government of Canada and already have an internal system that generates all traffic documents (including a paper B13A).
- Exporters currently reporting their exports through participation in the **Summary Reporting Program**, via tabulations generated from an internal system.

What does the Data Loading Module do?

This module was designed to allow the user to:

- Format the information stored on their internal legacy system to CAED requirements
- Load the resulting flat files into the CAED Data Loading Module
- Interface with the Data Loading Module to establish a one-time automatic mapping and validation relationship
- Import the resulting validated files into the CAED software to generate electronic Export Declarations
- Electronically transmit the resulting Export Declarations to the Federal Government of Canada using the CAED software.

Who in my organization should be involved with the formatting of our internal legacy system to CAED requirements?

Usually this would involve someone from your organizations Informatics section (IS). It might be the person responsible for the development of your internal “traffic-document generating system”, or it could be the resident technical person responsible for support. It should be stressed here that the **Data Loading Module is a technical solution** that requires some initial technical investment from the user organization.

How do I know if this is really for my organization?

Before committing to this project, may we suggest the following steps:

1. Evaluate your current needs.

How many declarations do I complete on a daily/monthly basis?

Is there sufficient quantity to justify IS involvement?

Or, should I just use the existing turn-key solution that is offered by the CAED software?

2. View the Screen Cam Demo of the CAED software.

The demo can be found on the CAED Web site at <https://www.statcan.gc.ca/eng/exp/index> or requested through the CAED Help Desk of Statistics Canada (1-800-257-2434 or 1-613-951-6291).

3. Talk to your organization.

Does your organization wish to go this route?

Does it have the technical capabilities to send encrypted FTP or encrypted E-mail transmissions via the Internet? Remember, the encryption and transmission software is already bundled into the CAED software. All the user must have is some level of Internet access. Even if you have a corporate firewall, the software allows your IS person to configure the “firewall tab” in the CAED software to allow outgoing transmissions.

4. Acquire the software.

The Data Loading Module is included with the CAED software. As mentioned earlier, the Data Loading Module feeds a flat file into the CAED software in order to use the transmission protocols embedded in it. Both the CAED software and the Data Loading Module are available free of charge to all users, upon registration to the CAED program. The software is available as a download from the CAED site (<https://www.statcan.gc.ca/eng/exp/index>) or on CD-ROM.

For software acquisition, and to acquire the activation code for the Data Loading Module, please contact the CAED Help Desk of Statistics Canada. The CAED Help Desk can be reached at:

Telephone: 1-800-257-2434 / 1-613-951-6291

FAX: 1-888-269-5305 / 1-613-951-6823

E-mail: export@canada.ca

Installing the Data Loading Module

Please refer to the installation guide.

Data Loading Module Input File (text file)

Each input file for the DLM must follow a specific format. A file can contain the information of many B13A forms. The information for a specific B13A form is composed of five different types of records: Header, Detail, Permit, Container and Reference. A letter is associated with each record type: H: Header, D: Detail, P: Permit, C: Container, R: Reference. The first character of each line in the file is the record type and it identifies the type of information contained on that line. The first two record types (Header and Detail) are mandatory. The last three record types (Permit, Container and Reference) are optional. Each B13A form must contain one and only one Header record and at least one Detail record. All the records associated with a B13A form must follow each other (grouped together) and they must be in a specific order.

Order to place the records	Record type	Description	Minimum number of record of that type per B13A form	Maximum number of record of that type per B13A form
1	H	Header	1	1
2	D	Detail	1	No maximum
3	P	Permit	0	No maximum
4	C	Container	0	No maximum
5	R	Reference	0	No maximum

EXAMPLE

Here is an example of a file that contains three B13A forms. The first B13A form has only one detail line with no permit, no container and no reference. The second B13A form has two detail lines, no permit, three containers and no reference. The third B13A form has three detail lines, three permits, two containers and one reference.

H + other header fields of the first B13A form
 D + other detail fields
 H + other header fields of the second B13A form
 D + other detail fields
 D + other detail fields
 C + Container number
 C + Container number
 C + Container number
 H + other header fields of the third B13A forms
 D + other detail fields
 D + other detail fields
 D + other detail fields
 P + Permit number
 P + Permit number
 P + Permit number
 C + Container number
 C + Container number
 R + Reference number

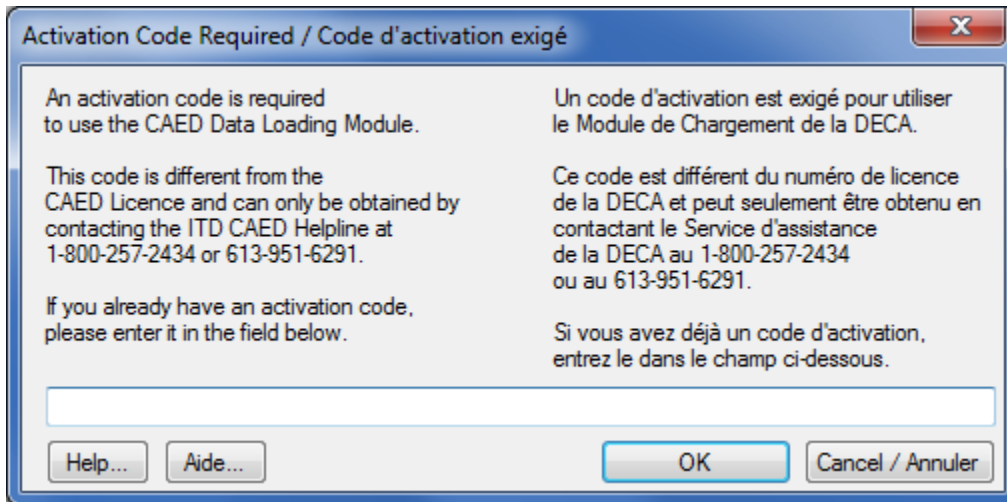
Navigating the Data Loading Module

Starting the Data Loading Module

To start the Data Loading Module, click on the Start button at the bottom of your screen. Then go to Programs → CAED → CAED_DLM 2018

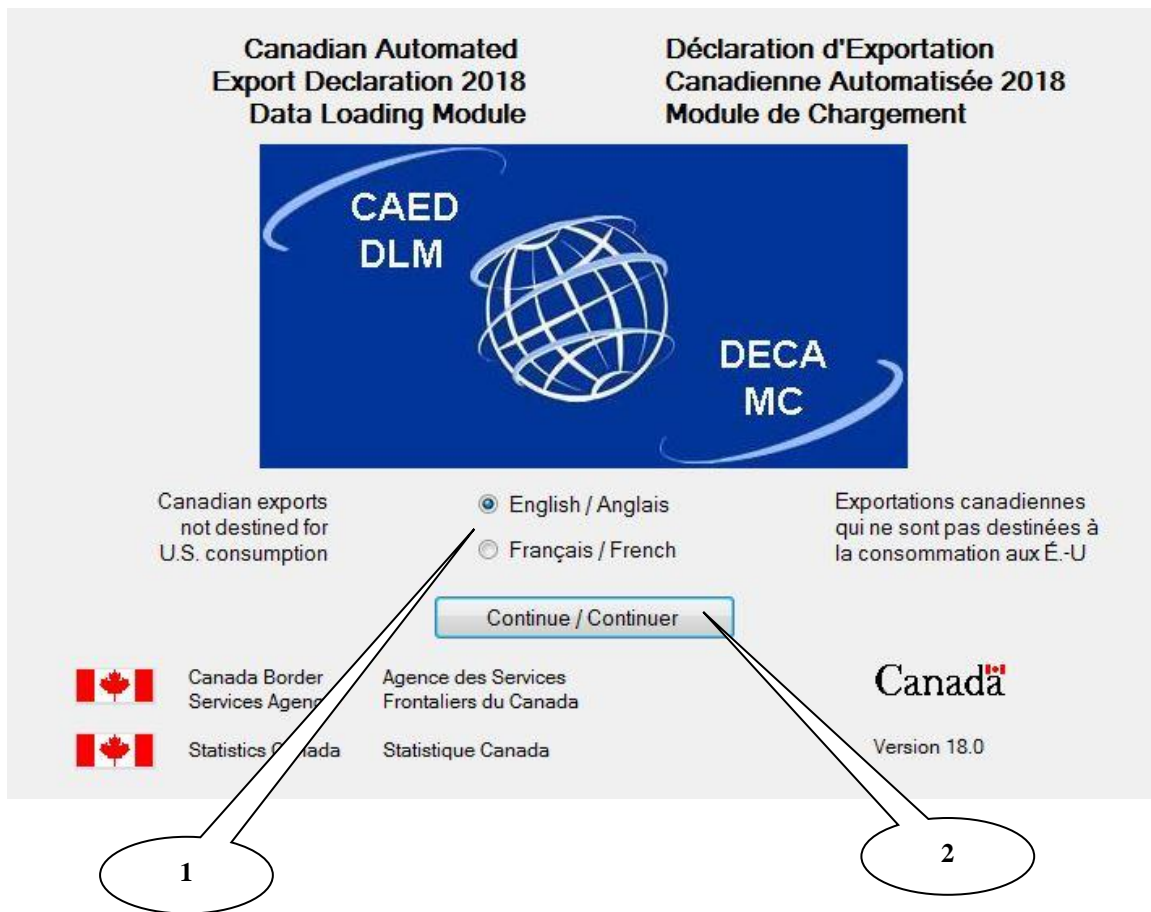
Activation Code

Before the Data Loading Module can be used for the first time, an activation code must be entered. This activation code only needs to be entered once and is available free of charge.



Welcome screen

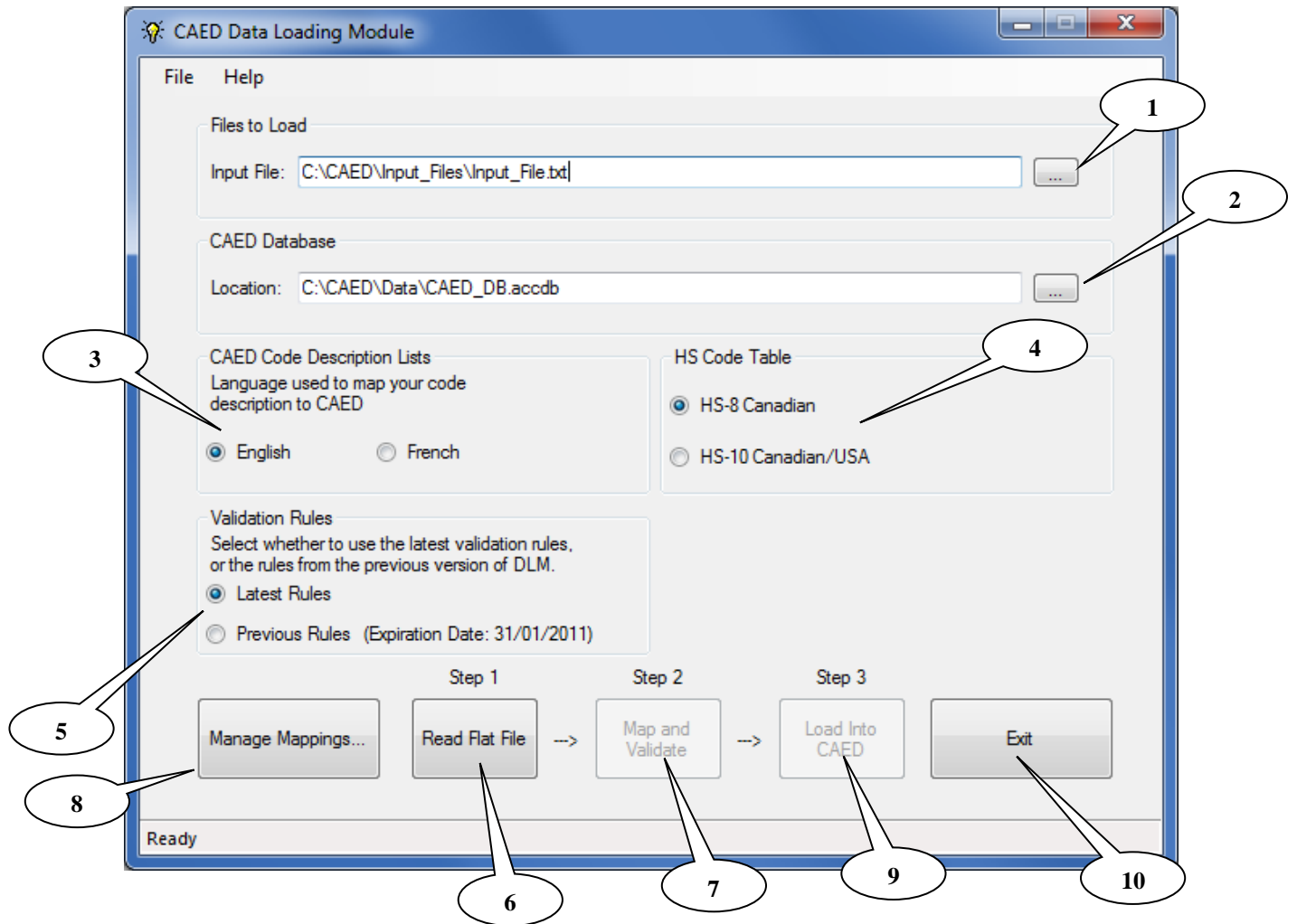
Upon starting the application, the welcome screen will appear.



- 1) The application can be run in either “English” or “French” by selecting the appropriate option.
- 2) Once the language is chosen, press the button “Continue/Continuer”.

The Main Screen of the Data Loading Module

Each section and control of this form has been numbered. By understanding the function of each section/control numbered in the main screen, the user will be able to optimize use of the Data Loading Module.

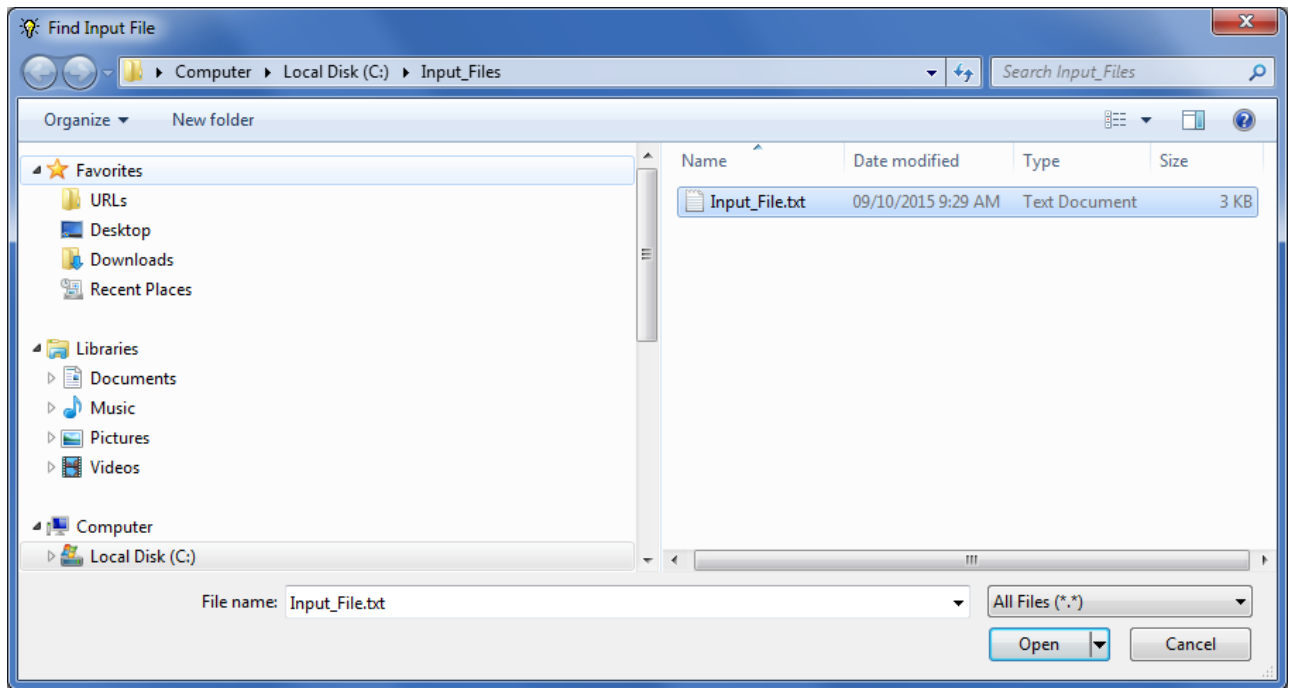


Input File Location

- 1) Press the button with "... " next to the Input file location text box in order to browse the file directories and locate where the input file is stored.

Once in the correct directory, select the input file and then press Open.

Example:

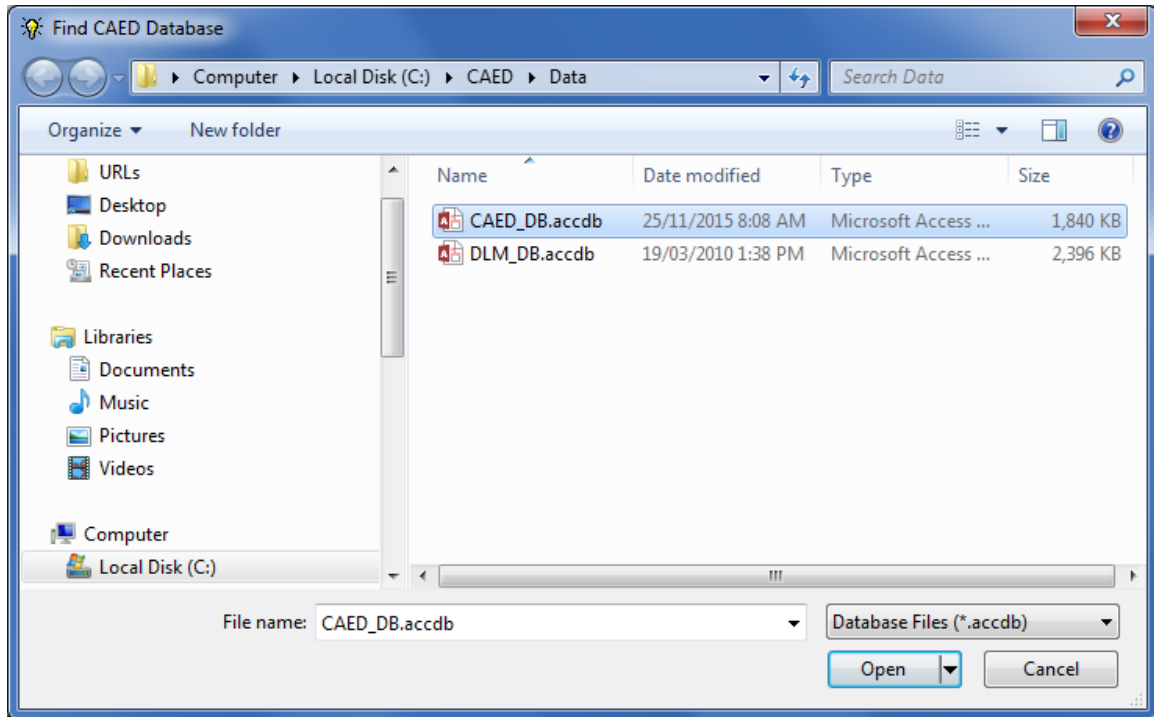


CAED Database Location

- 2) Press the button with “...” next to the CAED database location text box in order to browse the file directories and locate where the CAED database is stored. Once in the correct directory, select the database file (Called CAED_DB.accdb) and then press Open. The file location will appear in the database location text box.

If you are using the stand alone version of CAED, this database is C:\CAED\Data\CAED_DB.accdb if you have not changed the default installation directory when installing the CAED software.

Example:



CAED Code Description Lists

- 3) The next section in the CAED Data Loading Module Form is the CAED Code Description Lists. In this section one would indicate whether the language of the data in the input file is English or French. It is possible to operate the Data Loading Module in English even if the data itself is in French and vice versa. It is essential that the correct language be selected as different libraries are used for each selection during the mapping and validation process.

HS Code Table

- 4) Although the CAED software allowed only pre-defined Canadian HS-8 export codes, it was acknowledged that many user's legacy systems code to the Canadian or U.S. 10 digit import level. Consequently, choices were added in order to allow the user to select one of the two HS coding levels that could be employed by the user's legacy system.

When selecting the Canadian 8-digit export code, only valid HS-08 codes will be permitted. Invalid codes will abort the validation process until they are corrected at the source.

When selecting the U.S. or Canadian 10 digit import code, the Data Loading Module will validate the HS code to the 6-digit level. The user will then be required to select the appropriate HS-08 export code using the presented drop-down lists.

Remember, once a "relationship" is established, the system will not re-prompt the user if that same code or description is encountered in subsequent loads. Until that "relationship" is terminated, (see Section 8: Manage Mappings) the Data Loading Module will automatically recognize that code or description as it was "established".

Validation Rules

- 5) There is a transition period where you will have a choice of using the validation rules from the previous version of the Data Loading Module, or the latest validation rules. This transition period exists because changes to the record layout or validation rules may have an impact on the computer system you use to create input files. The transition period must be used by your information technology specialists to adapt your system to correctly use the modified record layout and validation rules.

The previous validation rules will normally have an expiration date, which is displayed beside the Previous Rules option. You can use the previous validation rules up to this expiration date, but once the previous rules have expired, you will be forced to use the latest validation rules. Note: the Previous Rules also use the record layout from the previous version of the Data Loading Module. For version 11.0, there were changes to the record layout, and you will need to modify your input file before moving to the latest validation rules.

Read Flat File Button

- 6) When the Read Flat File button is pressed, the Data loading module reads the flat file specified in the “Input file” section, to a temporary database, “DLM_DB.accdb”. At this time, each record is checked to ensure the proper number of fields (75 in a header record, 15 in a detail record). If there are any problems during this process, an error is generated and a report of all errors generated during the read process will pop up. These errors must be resolved in the input file before they can be read properly. If there are no errors, the “Map and Validate” button becomes enabled.

Map and Validate Button

- 7) In the CAED software, one of the breakthrough features of the application was its ability to convert and/or validate nine text fields to numeric code sets prior to the encryption and electronic transmission of the Export Declaration to Statistics Canada. Consequently, in order to import the user’s legacy system descriptions of these fields into the CAED software, it becomes mandatory that this process be emulated.

Therefore, during the mapping process, the Data Loading Module will allow the user to build “relationships” for each unrecognized description (or code) that the wizard finds in any of these nine fields. The fields that are mapped are Province, Country, Reason for Export, Mode of Transport, Port of Exit, Unit of weight, Currency List, HS-10 and Unit of Measure.

For example, if in the user’s legacy system, the field “province of origin” has BC instead of British Columbia, the “mapping wizard” will prompt the user to find the correct corresponding province through a drop-down list. The wizard will automatically find the closest match. Once the user “OK’s” a “relationship”, every subsequent time the “wizard” encounters BC, it will automatically match it to the established CAED Code Set without ever again prompting the user for a response.

Clicking the “Ignore” button on the “Mapping Wizard” screen allows you to skip the mapping process for the field displayed on the mapping wizard. Clicking the “Ignore” button will generate a field error during the validation process, but enables you to skip a particular mapping without aborting the entire mapping and validation process. This is useful in cases where you are unsure as to which CAED code to select for the mapping relationship, but wish to continue mapping other fields in your input file.

The screenshot shows a 'Mapping Wizard' dialog box with the following fields and values:

- Mapping Description:**
 - Section: Commodity Line
 - Description: Country of Origin
 - Status: NEW MAPPING
 - License Number: ZZZZZZ
 - Form Key: 20130100680
 - Line Number: 2
- Loaded Value:** Can
- Mapped To:** Canada

Buttons at the bottom: Ignore, OK

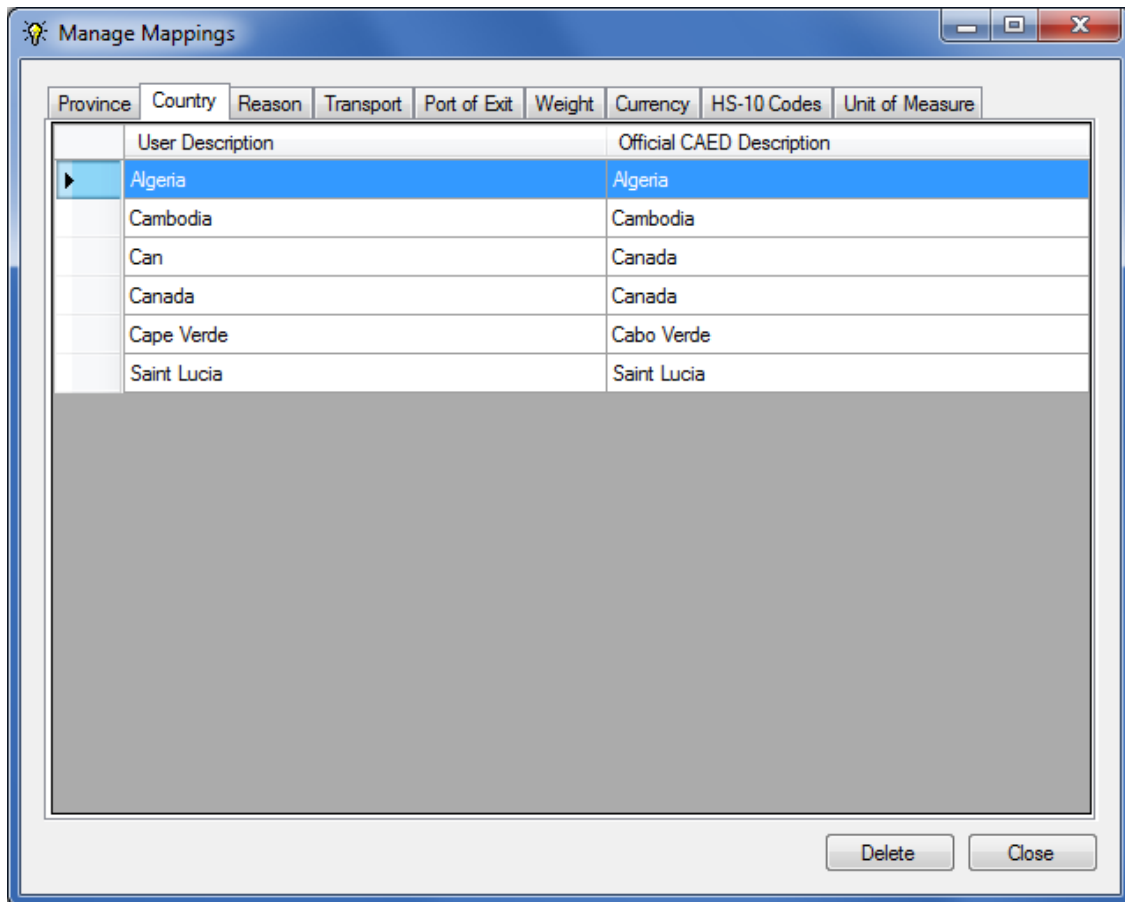
When the Map and Validate button is pressed, the Data loading module performs the following functions on the DLM_DB.accdb file:

- First, the “mapping wizard” is enabled in order to map nine specified fields (that are found in the header and detail records) to the CAED code sets and descriptions.
- The module validates all fields in the “Input file” to ensure proper format and to ensure that no mandatory fields are missing (For validation criteria, please see the Validation and Mandatory columns of the header and detail record layout in appendix A).

****Note**** If any data element fails validation, the Data Loading Module will display a report identifying the data element(s) requiring corrective action(s) and their exact location(s) in the source-data file. After all identified failures are rectified at the source, the Data loading module can then be re-initiated.

Manage Mappings

- 8) Once a relationship has been “established” or learned, it is stored in one of nine tables. In order to change a relationship, the “manage mappings” feature must be accessed. Once accessed, the desired table can be selected and then any or all of the “relationships” for that table can be either viewed or terminated. Termination is accomplished by simply highlighting the relationship(s) no longer needed, and then clicking the “delete” button found at the bottom of the screen.



Load in CAED Button

- 9) Once the mapping and validation is completed, the “Load into CAED” button is enabled. When the “Load into CAED” button is pressed, a unique Form ID is generated for each form processed by the Data Loading Module. The validated forms are then transferred to the CAED software. Once this is accomplished, a message will appear: “Data successfully transferred to CAED software”. If one or more forms cannot be transferred to CAED, an error message will be displayed listing the Licence Number, Form Key from the input file, and the generated Form ID for each form that could not be transferred.

Exit Button

- 10) Finally, press the “Exit” button at the bottom of the screen and move on to the final step in the process: The transmission of the data with the CAED software.

For more information about the transmission process with the CAED software, please consult the CAED user guide. This document can be found on the CAED CD.

Appendix A – Input File Record Layout

*The field listing represents the order in which the fields are placed in the header file

**The bold italicized rows are converted to CAED codes during the mapping process

***If you are using the Previous Validation rules, you must use the record layout from the previous version of the Data Loading Module.

HEADER RECORD LAYOUT

Field No.	Start Pos.	End Pos.	Field	Max length	Format	Mandatory
1	1	1	Record type	1	Must contain "H"	Yes
2	2	7	Not used	6		N/A
3	8	13	Exporter authorization ID	6	AA9999	Yes
4-5-6	14	17	Not used	4		N/A
7	18	28	Form Key	11		Yes
8	29	98	Exporter name	70		Yes
9	99	113	Exporter business number	15	999999999RM9999	Yes
10	114	183	Exporter street	70		Yes
11	184	218	Exporter city	35		Yes
12	219	221	Not used	3		N/A
13	222	251	<i>Exporter province/state</i>	30		<i>Yes, if Exporter country is Canada or United States.</i>
14	252	253	Not used	2		N/A
15	254	273	<i>Exporter country</i>	20		<i>Yes</i>
16	274	288	Exporter postal/zip code	15		Yes, if Exporter country is Canada or United States.
17	289	298	Exporter telephone	10	9999999999	No
18	299	302	Exporter telephone extension	4	9999	No
19	303	312	Exporter fax	10	9999999999	No
20	313	382	Consignee name	70		Yes
21	383	452	Consignee street	70		Yes
22	453	487	Consignee city	35		Yes
23	488	517	Consignee province state	30		No
24	518	519	Not used	2		N/A
25	520	539	<i>Consignee country</i>	20		<i>Yes</i>
26	540	545	Service provider authorization ID	6	AA9999 The second character must be "A".	Yes, if Certifier Status = 2 (Other)

27	546	615	Service provider name	70		Yes, if you use a service provider.
28	616	685	Service provider street	70		No
29	686	720	Service provider city	35		No
30	721	723	Not used	3		N/A
31	724	753	Service provider province/state	30		No
32	754	755	Not used	2		N/A
33	756	775	Service provider country	20		No
34	776	790	Service provider postal/ZIP code	15		No
35	791	800	Service provider telephone	10	999999999	Yes, if you use a service provider.
36	801	804	Service provider telephone extension	4	9999	No
37	805	874	Certifier Name	70		Yes
38	875	944	Certifier street	70		Yes
39	945	979	Certifier city	35		Yes
40	980	982	Not used	3		N/A
41	983	1012	Certifier province/state	30		Yes
42	1013	1014	Not used	2		N/A
43	1015	1034	Certifier country	20		Yes
44	1035	1049	Certifier postal/zip code	15		Yes
45	1050	1059	Certifier telephone	10	999999999	Yes, if certifier country is Canada or United States.
46	1060	1063	Certifier telephone extension	4	9999	No
47	1064	1073	Certifier fax	10	999999999	No
48	1074	1143	Certifier Company Name	70		Yes
49	1144	1144	Certifier Status	1	1=Exporter, 2=Other	Yes
50	1145	1154	Commodity gross weight	10	Numeric with no thousands separator and a period as a decimal separator. Maximum of 3 decimal digits.	Yes
51	1155	1157	Not used	3		N/A
52	1158	1207	Commodity gross weight unit of measure	50		Yes
53	1208	1223	Not used	16		N/A
54	1224	1239	Freight Charges	16	Numeric with no thousands separator and a period as a decimal separator.	Yes

					Maximum of 2 decimal digits.	
55	1240	1242	Not used	3		N/A
56	1243	1292	<i>Commodity currency of declared value</i>	50		Yes
57	1293	1293	Not used	1		N/A
58	1294	1313	<i>Mode of transport</i>	20		Yes
59	1314	1315	Not used	2		N/A
60	1316	1365	<i>Reason for export</i>	50		Yes, if goods not sold.
61	1366	1395	Vessel name	30		Yes, if mode of transport is Marine
62	1396	1397	Not used	2		N/A
63	1398	1417	<i>Country of final destination</i>	20		Yes
64	1418	1425	Date of exportation	8	YYYYMMDD	Yes
65	1426	1429	Not used	4		N/A
66	1430	1479	<i>Port of exit</i>	50		Yes
67	1480	1483	Not used	4		N/A
68	1484	1533	Certifier e-mail address	50		Yes
69	1534	1537	Number of packages	4		Yes
70	1538	1540	Not used	3		N/A
71	1541	1560	Kind of packages	20		Yes
72	1561	1595	Name of exporting carrier, freight forwarder or consolidator	35		Yes
73	1596	1620	Transportation Document Number	25		Yes
74	1621	1630	Not used	10		N/A
75	1631	1649	Not used	19		N/A
76	1650	1652	Not used	3		N/A

DETAIL RECORD LAYOUT

Field No.	Start Pos.	End Pos.	Field	Max length	Format	Mandatory
1	1	1	Record Type	1	Must be "D"	Yes
2	2	3	Not used	2		N/A
3	4	23	<i>Country of origin</i>	20		Yes
4	24	25	Not used	2		N/A
5	26	55	<i>Province of origin</i>	30		Yes
6	56	65	<i>HS code</i>	10	99999999 or 9999999999	Yes
7	66	320	Product description	255		Yes
8	321	350	Conveyance Identification Number	30		Yes, for certain HS codes
9	351	364	Not used	14		N/A
10	365	367	Not used	3		N/A
11	368	417	Not used	50		N/A

12	418	431	Quantity	14	Numeric with no thousands separator and a period as a decimal separator. Maximum of 3 decimal digits.	Yes and cannot be zero.
13	432	434	Not used	3		N/A
14	435	484	Unit of measure	50		Yes
15	485	500	Value FOB point of exit	16	Numeric with no thousands separator and a period as a decimal separator. Maximum of 2 decimal digits.	Yes

Note: The "Province of Origin" field must be mapped to a Canadian province/territory, even if the country of origin is not Canada. If the goods were originally imported into Canada and are being exported in the same condition, indicate the province the goods were shipped from.

PERMIT RECORD LAYOUT

Field No.	Start Pos.	End Pos.	Field	Max length	Format	Mandatory
1	1	1	Record type	1	Must be "P"	Yes
2	2	36	Permit number	35		Yes

Note : This type of record is not mandatory.

CONTAINER RECORD LAYOUT

Field No.	Start Pos.	End Pos.	Field	Max length	Format	Mandatory
1	1	1	Record type	1	Must be "C"	Yes
2	2	26	Container number	25		Yes

Note: This type of record is not mandatory.

REFERENCE RECORD LAYOUT

Field No.	Start Pos.	End Pos.	Field	Max length	Format	Mandatory
1	1	1	Record type	1	Must be "R"	Yes
2	2	36	Reference number	35		Yes

Note: This type of record is not mandatory.

Appendix B – Error Glossary

Each field has errors that may be generated while running the CAED Data Loading Module. The first letter of an error number indicates which record type the field is from (Header =H, Detail=D, general error = E). Following the first letter is a number which corresponds to the field which contains the error. The final letter of an error number represents the type of error. There are five general types of errors that may occur in the Data Loading Module: missing mandatory field errors(M), datatype/validation errors(I), inactive code errors (A), warnings (W), and other errors.

By looking at error “H10M” we know that the problem is in the Header record with field number 10 (Exporter street) and this mandatory field is missing.

An error number ending with the letter “I” indicates an invalid datatype or invalid value in a field. For example, with field #49 “Certifier Status” the error number “H49I” may be generated. Field # 49 must have the value 1 or 2 and if the data input for this field is another datatype or value (i.e. 7), error “H49I” will occur.

An error number ending with the letter “M” indicates a mandatory field is missing. For example, Fields #3, 8, and 9 in the header record are all mandatory fields (see the record layout in Appendix A to see which fields are mandatory) and have mandatory errors that may be generated.

An error number ending with the letter “A” indicates a field has been mapped to a value that is no longer active. For example, if a value for field #13 “Exporter Province/State” was previously mapped to “Yukon/N.W.T.”, the error number “H13A” will be generated if the mapped value is not updated, since “Yukon/N.W.T.” is not an active province/state.

An error number ending with the letter “W” is a warning. These warnings will be displayed on the error report, but they do not prevent the form from being loaded into CAED. For example, if in a detail line field #3 “Country of Origin” is “United States”, the warning “D03W” will be generated. If this is the only error/warning generated, the CAED form can still be loaded into CAED.

An example of an error from the "other error" category is E001. This error number may be generated when the data loading module verifies that at least one detail record exists for each header record. If a header record exists with no matching detail record, the error “E001” will be generated. Note that errors in the “Other Errors” category have no letter at the end of the error number. It should also be noted that field #0 with the field name “N/A” will appear with “Other” errors that are generated. This is because the error is not applicable to any specific field, it is an error associated with an entire record.

The following list contains all the errors that may be generated by the Data Loading Module. The Errors have been placed in 5 lists: header record errors, detail record errors, container record errors, permit record errors, and “other” errors. Please see Appendix C to view a sample Error report, to learn how to interpret errors in the report, and to learn tips to resolve errors in your input file.

Header Record Error List

Field No.	Field Name	Error No.	English Message
2	License Number	H02I	Invalid license number.
		H02M	Missing value.
3	Exporter authorization ID	H03I	Invalid Authorization Number. Expected format AA9999.
		H03M	Missing value.
5	Source Type	H05I	Invalid source type.
		H05M	Missing value.
6	Transaction Type	H06I	Invalid transaction type.
		H06M	Missing value.
8	Exporter name	H08M	Missing value.
9	Exporter business number	H09I	Invalid Business Number. Expected format: 999999999RM9999.
		H09M	Missing value.
10	Exporter street	H10M	Missing value.
11	Exporter city	H11M	Missing value.
13	Exporter province/state	H13I	Invalid Province/State.
		H13M	Missing value.
		H13A	Inactive province/state.
15	Exporter country	H15I	Invalid Country.
		H15M	Missing value.
		H15A	Inactive country.
16	Exporter postal/zip code	H16I	Invalid Postal Code. Expected format: A9A9A9.
		H16M	Missing value.
17	Exporter telephone	H17I	Invalid Phone. Expected format: 9999999999.
18	Exporter telephone extension	H18I	Invalid extension. Expected format: 0000.
19	Exporter fax	H19I	Invalid Fax. Expected format: 9999999999.
20	Consignee name	H20M	Missing value.
21	Consignee street	H21M	Missing value.
22	Consignee city	H22M	Missing value.
25	Consignee country	H25I	Invalid Country.
		H25M	Missing value.
		H25A	Inactive country.
26	Service provider authorization ID	H26I	Invalid service provider authorization ID. Expected format: AA9999
		H26M	Missing value.
27	Service provider name	H27I	Invalid service provider name.
		H27M	Missing value.
28	Service provider street	H28I	Invalid service provider street.
		H28M	Missing value.
29	Service provider city	H29I	Invalid service provider city.

		H29M	Missing value.
31	Service provider province/ state	H31I	Invalid service provider province/state.
		H31M	Missing value.
		H31A	Inactive service provider province/state.
33	Service provider country	H33I	Invalid service provider country.
		H33M	Missing value.
		H33A	Inactive service provider country.
34	Service provider postal/ZIP code	H34I	Invalid Postal Code. Expected format: A9A9A9.
		H34M	Missing value.
35	Service provider telephone	H35I	Invalid phone. Expected format: 9999999999.
		H35M	Missing value.
36	Service provider telephone extension	H36I	Invalid extension. Expected format: 0000.
37	Certifier name	H37M	Missing value.
38	Certifier street	H38M	Missing value.
39	Certifier city	H39M	Missing value.
41	Certifier province/state	H41I	Invalid province/state.
		H41M	Missing value.
		H41A	Inactive province/state.
43	Certifier country	H43I	Invalid country.
		H43M	Missing value.
		H43A	Inactive country.
44	Certifier postal/zip code	H44I	Invalid postal code.
		H44M	Missing value.
45	Certifier telephone	H45I	Invalid phone. Expected format: 9999999999.
		H45M	Missing value.
46	Certifier telephone extension	H46I	Invalid extension. Expected format: 0000.
47	Certifier fax	H47I	Invalid fax. Expected format: 9999999999.
48	Certifier company name	H48M	Missing value.
49	Certifier status	H49I	Invalid certifier status.
		H49M	Missing value.
50	Commodity gross weight	H50I	Invalid commodity gross weight. Value must be a number with a maximum of 3 decimal digits.
		H50M	Missing value.
52	Commodity gross weight unit of measure	H52I	Invalid gross weight unit of measure.
		H52M	Missing value.
		H52A	Inactive gross weight unit of measure.
54	Freight charges	H54I	Invalid freight charges. Value must be a number with a maximum of 2 decimal digits.
		H54M	Missing value.
56	Commodity currency of	H56I	Invalid commodity currency of declared

	declared value		value.
		H56M	Missing value.
		H56A	Inactive commodity currency of declared value.
58	Mode of transport	H58I	Invalid mode of transport.
		H58M	Missing value.
60	Reason for export	H60I	Reason for export is invalid.
		H60A	Inactive reason for export.
61	Vessel name	H61I	Invalid Vessel Name.
		H61M	Missing value.
63	Country of final destination	H63I	Invalid country.
		H63M	Missing value.
		H63A	Inactive country of final destination.
64	Date of exportation	H64I	Invalid date format. Expected format: YYYYMMDD.
		H64M	Missing value.
66	Port of exit	H66I	Invalid port of exit.
		H66M	Missing value.
		H66A	Inactive port of exit.
68	Certifier E-mail Address	H68I	Invalid Certifier E-mail Address.
		H68M	Missing value.
69	Number of packages	H69I	Invalid number of packages. Value must be an integer.
		H69M	Missing value.
71	Kind of packages	H71M	Missing value.
72	Name of exporting carrier, freight forwarder or consolidator	H72M	Missing value.
73	Transportation document number	H73I	Invalid Transportation Document Number.
		H73M	Missing value.
74	Timestamp	H74I	Invalid timestamp. Expected format: YYYY-MM-DD HH:MM:SS
		H74M	Missing value.

Detail Record Error List

Field No	Field Name	Error No.	English Message
3	Country of origin	D03I	Invalid country.
		D03M	Missing value.
		D03A	Inactive country.
		D03W	Warning. All goods of U.S. origin exported from Canada are subject to export control. Where no individual Export Permit is applicable, you must cite General Export Permit 12 (GEP 12).

5	Province of origin	D05I	Invalid province.
		D05M	Missing value.
		D05A	Inactive province/state.
6	HS Code	D06I	Invalid HS code.
		D06M	Missing value.
7	Product description	D07M	Missing value.
8	Conveyance identification number	D08I	Invalid Conveyance ID number.
		D08M	Missing value.
12	Quantity	D12I	Invalid quantity. Value must be a number with a maximum of 3 decimal digits and cannot be zero.
		D12M	Missing value.
14	Unit of measure	D14I	Not a valid unit of measure for the HS code.
		D14M	Missing value.
		D14A	Inactive unit of measure.
15	Value FOB point of exit	D15I	Invalid datatype. Value must be a number with a maximum of 2 decimal digits.
		D15M	Missing value.

Container Record Error List

Field No	Field Name	Error No.	English Message
2	Container Number	C02I	Invalid Container Number.
		C02W	Warning. This field must be amended to include the container number at least two hours prior to the goods being loaded on the conveyance for export. NOTE: TO BE DETERMINED is not an option when the goods are exported by highway.

Permit Record Error List

Field No	Field Name	Error No.	English Message
2	Permit Number	P02I	Invalid Permit Number.
		P02W	Warning. A Permit Number must be entered for a country on Canada's Area Control List (ACL).

Other Error List

Field No.	Field Name	Error No	English Message
0	N/A	E001	Header record without matching detail record.
0	N/A	E002	The input file must start with a Header line.
0	N/A	E003	Invalid header record length.
0	N/A	E004	Invalid detail record length.
0	N/A	E005	Invalid permit record length.
0	N/A	E006	Invalid container record length.
0	N/A	E007	Invalid reference record length.
7	Form key	E008	This record could not be inserted into the Data Loading Module database because the FORMKEY was not unique. Change the FORMKEY to ensure that it is unique.
7	Form key	E009	This record could not be loaded in the Data Loading Module database because a FORMKEY field in the header record is missing.
0	N/A	E010	Invalid record type.

Appendix C – Interpreting the Data Loading Module Error Report

Example Report:

The screenshot shows an 'Error Report' window with a table of error details. Callouts 1 through 9 highlight specific parts of the report:

- 1: Form Key column
- 2: Line Number column
- 3: Field Number column
- 4: Field Description column
- 5: Error Number column
- 6: Message column
- 7: Data column
- 8: Data Size column
- 9: Max Field Size column

Form Key	Line Number	Field Number	Field Description	Error Number	Message	Data	Data Size	Max Field Size
20041200C02		0			At least one Container Number is required for Marine.		0	0
20041200C02	2	6	HS code	D06I	Invalid HS code.	01011000	8	10
20041200C02	34	34	Service provider postal/zip code	H34I	Invalid Postal Code. Expected format: A9A9A9.	SP POSTAL CODE	14	15
20041200C02	44	44	Certifier postal/zip code	H44I	Invalid postal code.	CERTPOSTALCODE	14	15
20041200C02	64	64	Date of exportation	H64I	Invalid date format. Expected format: YYYYMMDD. Customs Date of Exportation must be between 2016-12-01 and 2018-01-31.	20050101	8	8
20041200C02	68	68	Certifier E-mail Address	H68I	Invalid Certifier E-mail Address.	AB-Calgary Air Cargo	20	50
20041200C02	73	73	Transportation document number	H73I	Invalid Transportation Document Number. Unique Carrier Assigned Code in the Transportation Document Number is invalid.	transportation document n	21	35
20041200D03		0			At least one Container Number is required for Marine.		0	0
20041200D03	1	3	Country of origin	D03M	Missing value.		0	20
20041200D03	2	6	HS code	D06I	Invalid HS code.	01011000	8	10
20041200D03	34	34	Service provider postal/zip code	H34I	Invalid Postal Code. Expected format: A9A9A9.	SP POSTAL CODE	14	15
20041200D03	44	44	Certifier postal/zip code	H44I	Invalid postal code.	CERTPOSTALCODE	14	15
20041200D03	64	64	Date of exportation	H64I	Invalid date format. Expected format: YYYYMMDD. Customs Date of Exportation must be between 2016-12-01 and 2018-01-31.	20050101	8	8
20041200D03	68	68	Certifier E-mail Address	H68I	Invalid Certifier E-mail Address.	AB-Calgary Air Cargo	20	50
20041200D03	73	73	Transportation document number	H73I	Invalid Transportation Document Number. Unique Carrier Assigned Code in the Transportation Document Number is invalid.	transportation document n	21	35
20041200D05		0			At least one Container Number is required for Marine.		0	0
20041200D05	1	5	Province of origin	D05M	Missing value.		0	30
20041200D05	2	6	HS code	D06I	Invalid HS code.	01011000	8	10
20041200D05	34	34	Service provider postal/zip code	H34I	Invalid Postal Code. Expected format: A9A9A9.	SP POSTAL CODE	14	15

14/09/2016 Page 1 of 18

General Information

This report will pop up during the Read or Map and Validate process when there are errors that must be addressed in order to fix the input file that the user is trying to load. Each row in the report represents one error that must be addressed. Once the user has repaired all of the error problems, they should “Read” (press the “Read Flat File” button) their input file again. The numbered items in the report each have a detailed description/explanation in the following list.

1) Form Key Column

The form key is given to help locate which record has an error. The Form Key is the seventh field in each header line, and may be used to find the record containing the error.

2) Line Number Column

This will only have a value for the Detail records. It is a derived value based on the physical location of the detail record in the input file. A line number of 3 would mean the third detail record of the header record having the form key indicated.

3) The Field No. Column

Once the line (record) containing the error has been located, note the Field Number and description. This number identifies the field inside the line (record) which contains the error. Note that the Field Number corresponds with the order of the fields in each record – therefore, Field # 3 is the third field on the line and Field #54 is the 54th field on the line.

4) The Field Description

This column gives a brief description of what the field should contain. For example, “Exporter telephone” should contain a telephone number.

5) The Error Number

This column gives the Error number that is occurring for the indicated field and record. See Appendix B for an explanation of how to interpret error numbers.

6) The Error Message

This column describes the error. For example, an error message “Invalid value. Expected format: A9A9A9” in a postal code field would mean that the expected format was not found. The data in this example might be “A999A9” where the second nine should have been a letter.

7) The Data Column

This column will show the data that was found invalid, wherever possible. If the field was a missing mandatory field, the data column would be empty.

8) The Data Size

This column will display the length of the data where applicable.

9) The Max Field Size

This column displays the maximum field size allowed.

Appendix D – Sample Input File

Input.txt

```

H SC0001 20180100007exp. name 123456789RM0001exp.
street exp. city Quebec Canada
J1J1J1 11111111112222333333333333cons. name cons. street
cons. city cons. prov. Cambodia SA0001sp name
sp street sp city Saint Lucia
A1A1A1 44444444445555cert. name cert. street
cert. city Alberta Canada K4K4K4
66666666667777888888888888cert. company name 267.8 KGM
Kilogram 34.5 Canadian Dollar Water
Vessel name Afghanistan 20180118 AB-Aden
cert@email.com 4 paquets exp. carrier name
1234UniqueCarrierCode
D Canada British Columbia 87019010 Tracteur
ID#123 3 Number
5000.33
D Canada Manitoba 87011000 Tractors
ID#345 2 Number
3300.03
Ppermit #1
Ppermit #2
Ccont #1
Ccont #2
Rref #1
Rref #2

```

Note: The RECORD TYPE fields have been highlighted so that you can see where each line begins.

Appendix E – Changes to the Input File Layout and Validation Process

Here is the list of new errors you may see in CAED DLM 18.0:

1. An error will be generated if the "Date of Exportation" (YYYYMMDD) is not between "20171201" and "20200131".