

Introduction

A Business Register (BR) is essential to Statistics Canada (STC) as a major component for the conduct of business surveys. Implemented more than 15 years ago, it was time to revisit the requirements for a BR given today's realities.

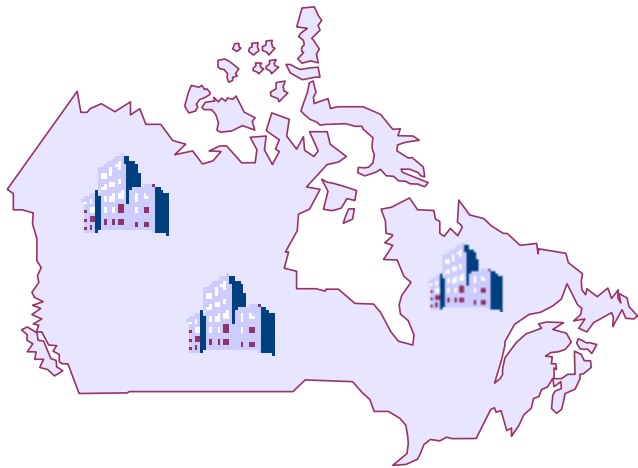


Following extensive review and analysis the conclusion was reached that in order to maintain its relevancy, flexibility and integrity, the BR would have to undergo a significant redesign.

What follows is a high-level description of the Redesign project in order to answer the basic questions of what the project aims to do, how and when it will be accomplished and what is to be gained by such an undertaking.

What is a Business Register?

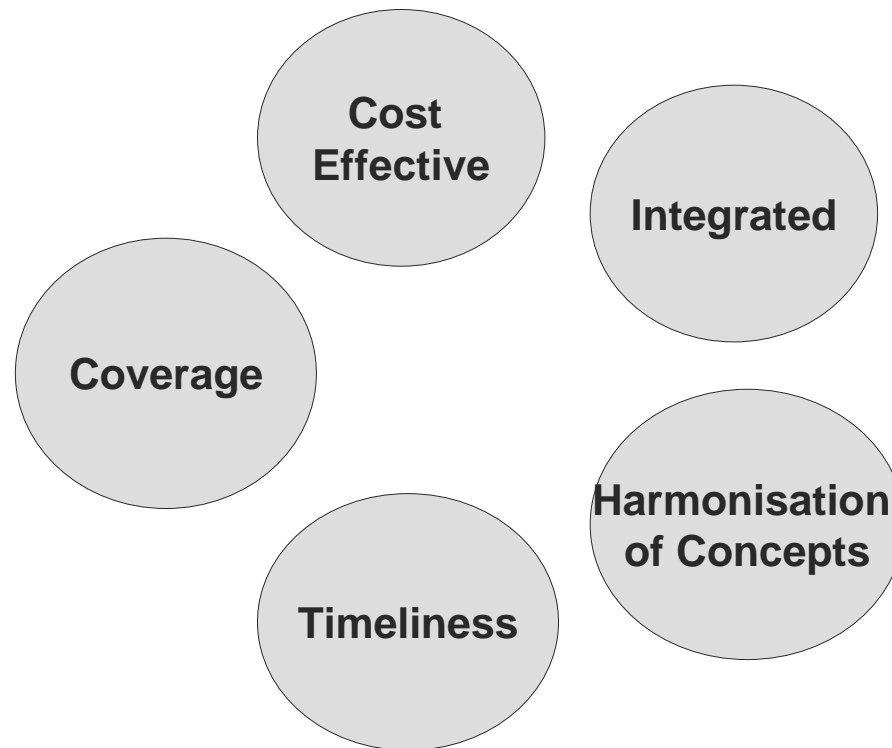
The register is a structured list of businesses engaged in the production of goods and services in Canada and is used to:



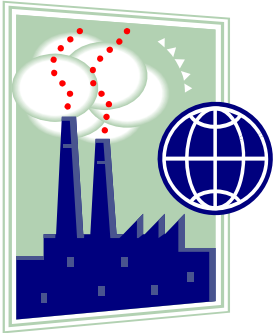
- Determine the in-scope population
- Record ownership links between legal entities within Canada with those in the rest of the world
- Select a sample
- Support collection activities & monitor respondent burden.

Why was it created?

A centralised business register provides the framework for production of **coherent statistics** and facilitates analytical studies that link data from different business surveys.



What is prompting the BR to change?



The way business is done has undergone major changes since the mid-1980s when the original BR was implemented.

Technology has undergone even more changes and STC has committed to removing the BR from the mainframe platform by 2008.



The rules and operational processes for updating units of the Register are too complex and the system is too inflexible to incorporate significant change.



Opportunities come with change

This is an opportunity to build an application where STC and the Respondent share a common view of the business.

STC has the opportunity to more fully integrate systems and processes across survey areas.

By making use of current technologies and by streamlining the process, significant efficiencies will be met in terms of cost, time and effort.



Changes to processes and tools will improve timeliness and quality of data on the BR. Decisions made for the redesign will increase the BR's flexibility in meeting future demands and opportunities.

Objectives of the BR Redesign

Simplification – reduce the learning curve, simplify the environment, streamline the processes.

Timeliness/Efficiencies
– simplified processes will lead to improved timeliness and help to maximise efficiencies.



Accessibility – use the technology and simplified architecture to make it easier for users to retrieve the information they need.

Integration – include the functionality of peripheral systems into the new BR.

Monitor and Manage Respondent Burden – build in the flexibility to allow all business surveys to be hooked up to the BR.



The Plan

The redesign of the BR has a budget of 7.8 million dollars over three years and will be in **production** April 2008.

Since development is taking the form of **prototyped** iterations, BR staff, survey-takers and methodologists will have hands-on experience throughout the development period. **Consultation** continues via committee/working group representation and on-going presentations to stakeholders.



The **transition** plan describes potential impacts of changes due to the redesign upon our clients and partners. It details a strategy for minimizing disruptions during the transition from the old to the new BR.

Who are the Stakeholders?

Statistics Canada

- Corporate Management
- System of National Accounts
- Researchers/Analysts
- Survey Takers
- Systems
- Methodology

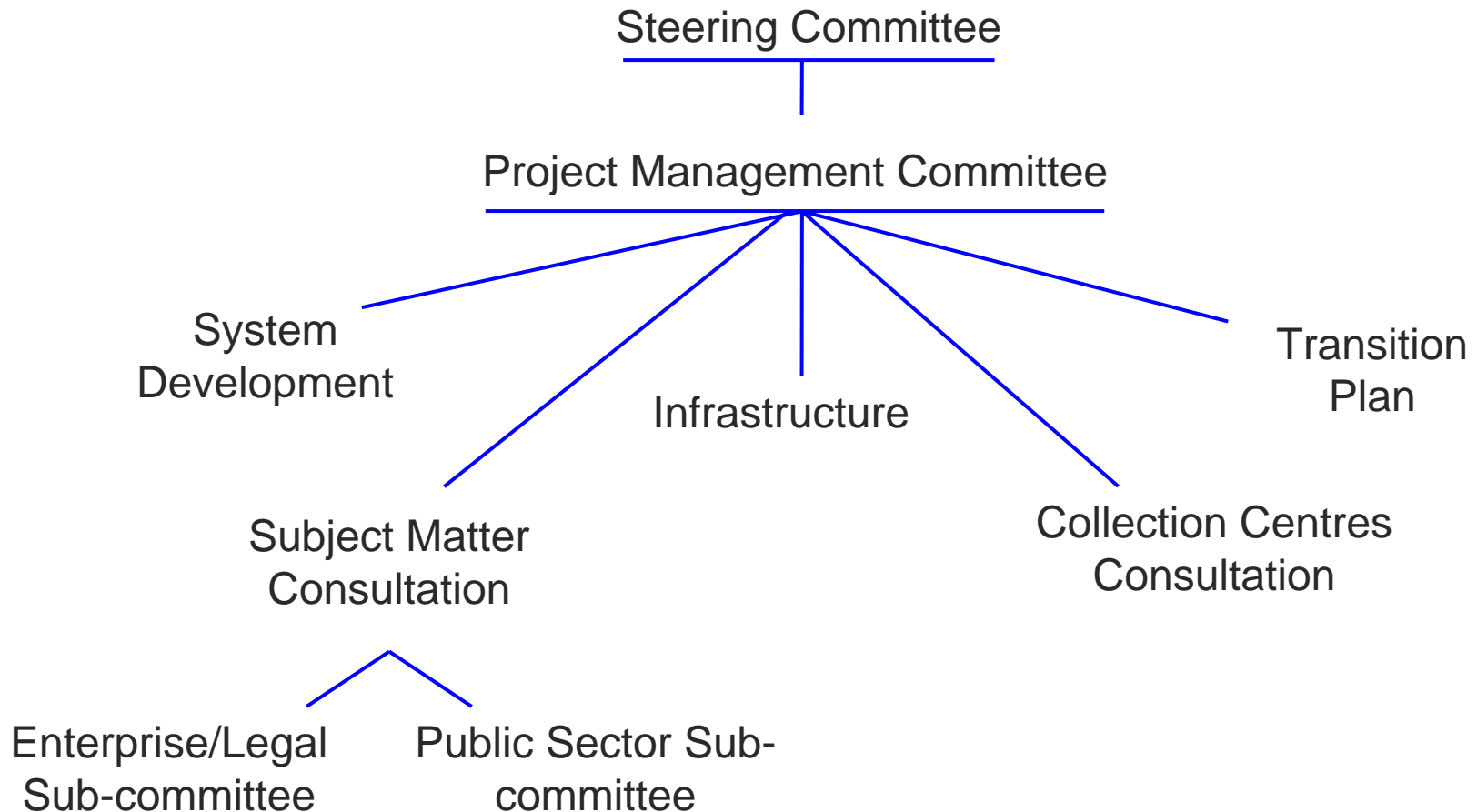


Canadian Revenue
Agency (CRA)

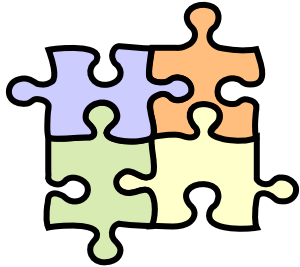
Other Federal Departments
(NRCAN,
Finance Canada...)

Provincial Focal Points

How is the project organised?



What will change with the new BR?



The BR will delineate **one type of unit**, which will be defined by its attributes and linked by different types of relationships.

The **Operating Structure** will be used in place of the Statistical Structure and, in most cases, Legal entities will be attached to an Operating Entity. With the new BR, STC and respondents will be working from the same structure.

Concepts will be **harmonised** between IOFD, BoP and the BR where ownership links are expanded to include foreign, minority and consolidation links.



Users will now have [direct access](#) to the BR in order to obtain a complete view of a business and to make direct updates in accordance with rules of permission.

The database will capture a collection activity [completion status](#) directly from the survey taker.

Information concerning [contacts](#) will now be collected and maintained in an integrated manner thus providing a common pool from which survey-takers may select the appropriate contact.



Change continued



The BR will move from a mainframe platform to a **Windows** environment.

All the BR graphical user interfaces will share a **common entry point**.

All the interfaces will share a **common look and feel**.

Most processing of simple enterprises and some processing of complex enterprises will be **automated**.

The BR will allow users to **look at historical records but not change them** (some exceptions are under review).

Change continued

Size variables will be **derived** entirely from reported values (T1, T2, GST, PD7, Profiling for complex enterprises) making better use of administrative sources and allowing **automation** of certain updates.

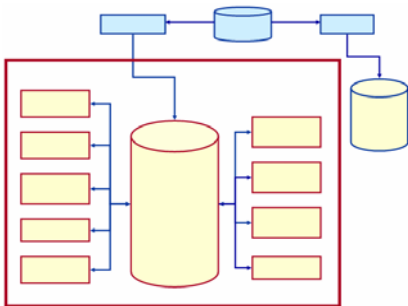


Where activities cross provincial/territorial boundaries, the BR will **no longer create pseudo establishments** as the Operating Structure contains the necessary attributes for allocation and collection of data to meet STC requirements.

The diagram on the next page shows the redesigned Window based BR model with notes describing the nature of each module on the following pages.

In addition to developing the modules, there will be processes to:

- extract information from the current Mainframe BR,
- convert files to work on a Windows platform,
- transfer variables (NAICS, revenue, S#, etc.) from the statistical to the operating structure,
- reformat data/variables (as required) and,
- correct anomalies existing in the current BR.

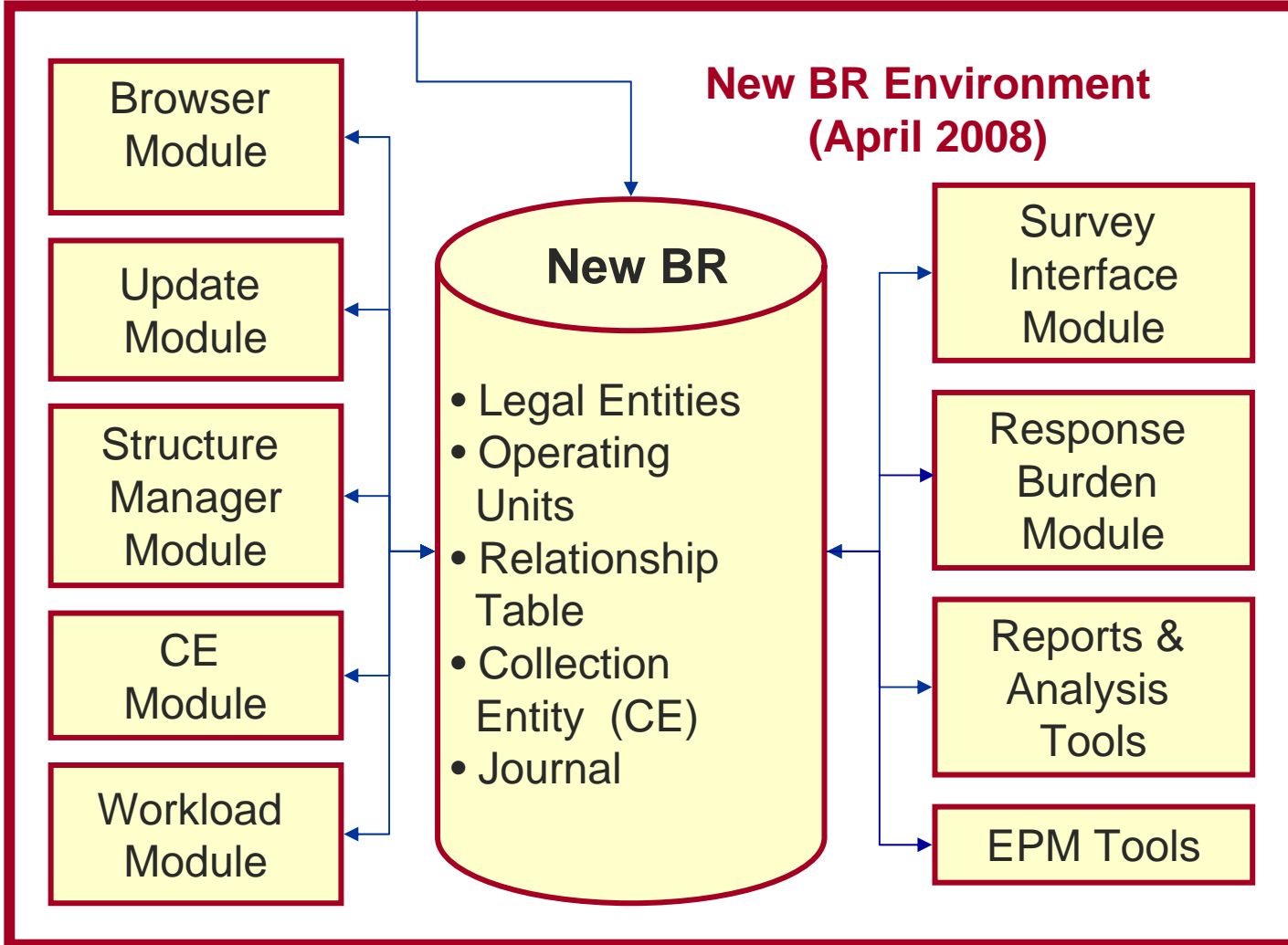




BR Model



Main Frame



Windows



The Browser Module

... allows users to **view data** concerning an enterprise through screens that will include:

- information on production entities,
- legal/operating structures and their attributes,
- collection entities,
- and updates that have been made to the enterprise



... will apply business rules to **manage and control all updates**.

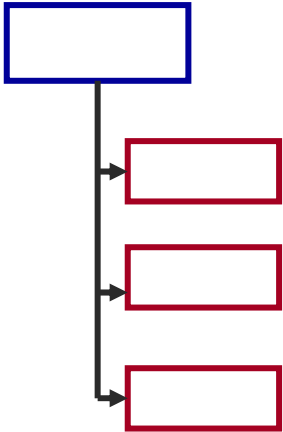
- for Batch processes updates will be automatically applied to the base or a signal (to the Workload Module) will be generated for further analysis/profiling by BRD.
- On-line updates will be applied automatically as per business rules.
- All transactions will be recorded on the update journal providing a history of update activity.



The Structure Manager Module

... will **display and manage structures** while also managing the links between production entities.

- Structures will be presented in either *organisational chart* or *tree diagram* format.
- Parent-child links will be managed and attributes propagated throughout the structure.
- The module verifies structure coherence when changes have been made.
- Together with the Update Module, it automatically creates a report for 'Joint Staff Review' according to business rules.



The Collection Entities (CE) Module

... is responsible for generating, updating and customizing CEs according to the sampling control file. It contains basic information concerning contact person(s), survey activity and a description of the production entities for which data are being collected.

Information will be updated directly from collection areas to ensure accurate, current contact data on the BR.

This pooling of information will allow survey managers to easily obtain the complete picture of a CE and better manage the collection process.



The Workload Module

... receives signals requesting **manual intervention** or when an update request has been flagged for quality-control. This module:

- manages and distributes signals,
- establishes priorities for analysts/profilers,
- groups signals by enterprise and portfolio,
- manages portfolios and,
- maintains an inventory of actions taken for each task.



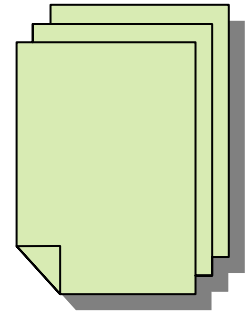


The Survey Interface Module

... produces survey universe files (**SUFs**) and Collection Entity (**CE**) files based upon information received from methodologists and survey managers.

Specifically, it:

- identifies the sampling elements,
- makes the SUF available to survey managers & methodologists,
- receives parameters and default rules for the creation of CEs,
- makes information concerning CEs available for data collection (SIF).





The Response Burden Module

... allows users to view all **respondent burden** information concerning business surveys for which data is collected by STC such as:

- the list of surveys in which an enterprise participates,
- survey response history for a given enterprise.
- monitor response rates by survey

This module will manage exclusion orders and contribute to production and/or management reports.



... will allow **Enterprise Portfolio Managers** to:

- copy reporting portraits and encrypted versions of legal and operating structures onto their laptop.
- process / upload updates from their laptop during his or her trip instead of writing reports.
- store Annual Reporting Arrangement Contracts on the BR (these contracts describe agreed upon response burden as negotiated by the EPM).



Reports and Analysis Tools

... are needed to provide reports to management and operations as well as for data analysis. For example:

- the number of signals received
- the number of updates by portfolio
- response burden reports
- population comparison and demographic analysis



The system allows BRD to create products which will disseminate statistical information to both internal and external clients.



Preliminary Prototypes

Browser Module	Mar/06
Survey Interface Module	Apr/06
CE Module	May/06
Update Module	May/06
Structure Manager Module	May/06
Workload Module	Sep/06
Response Burden Module	Oct/06
EPM Tools	Oct/06
Reports & Analysis Tools	Jan/07



Project Milestones

Bi-lateral consultations	2004
Preliminary SUF (MWRTS, UES)	Late 2005
Transition plan	Early 2006
Training	Jun 2007
Produce UES survey files	Oct 2007
Produce non-UES survey files	Oct 2007 - Apr 2008
New BR environment in production	Apr 2008



Contacts

Philippe Gagné (Subject Matter)	951-9735	JT8-D5
Suzanne McMartin (Systems)	951-4817	JT8-B6
Gaétan St-Louis (Transition Plan)	951-0960	JT8-B8
Yanick Beaucage (Methodology)	951-4622	RHC 11A
Mario Ménard (Director, BRD)	951-3479	JT8-B8

Please check out the BRD web-site at: <http://brdwebprod:6543>

[BR REDESIGN PROJECT](#)