



Catalogue no. 75F0002M — No. 003  
ISSN 1707-2840  
ISBN 978-0-662-48486-8

## Research Paper

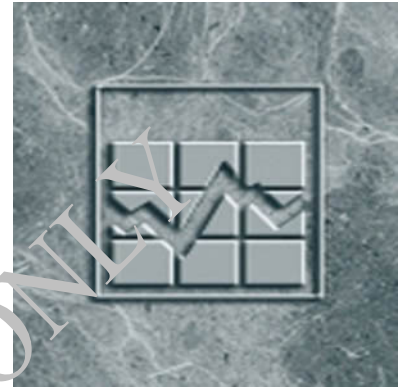
Income Research Paper Series

# Survey of Labour and Income Dynamics (SLID): Preliminary, Labour and Income Interview Questionnaire for Reference Year 2006

by Income Statistics Division

Jean Talon Building, Ottawa, K1A 0T6

Telephone: 1-613-951-7355



Statistics  
Canada

Statistique  
Canada

Canada

FOR INFORMATION ONLY

## How to obtain more information

Specific inquiries about this product and related statistics or services should be directed to: Income Statistics Division, Statistics Canada, Ottawa, Ontario, K1A 0T6 (telephone: 613-951-7355; 888-297-7355; [income@statcan.ca](mailto:income@statcan.ca)).

For information about this product or the wide range of services and data available from Statistics Canada, visit our website at [www.statcan.ca](http://www.statcan.ca) or contact us by e-mail at [infostats@statcan.ca](mailto:infostats@statcan.ca) or by telephone from 8:30 a.m. to 4:30 p.m. Monday to Friday:

### Statistics Canada National Contact Centre

Toll-free telephone (Canada and the United States):

Inquiries line	1-800-263-1136
National telecommunications device for the hearing impaired	1-800-363-7629
Fax line	1-877-287-4369

Local or international calls:

Inquiries line	1-613-951-8116
Fax line	1-613-951-0581

### Depository services program

Inquiries line	1-800-635-7943
Fax line	1-800-565-7757

### Information to access the product

This product, Catalogue no. 75F0002M, is available for free in electronic format. To obtain a single issue, visit our website at [www.statcan.ca](http://www.statcan.ca) and select "Publications."

### Standards of service to the public

Statistics Canada is committed to serving its clients in a prompt, reliable and courteous manner. To this end, the Agency has developed standards of service which its employees observe in serving its clients. To obtain a copy of these service standards, please contact Statistics Canada toll free at 1-800-263-1136. The service standards are also published on [www.statcan.ca](http://www.statcan.ca) under "About us" > "Providing services to Canadians."



Statistics Canada  
Income Statistics Division

## Income Research Paper Series

# Survey of Labour and Income Dynamics (SLID): Preliminary, Labour and Income Interview Questionnaire for Reference Year 2006

Published by authority of the Minister responsible for Statistics Canada

© Minister of Industry, 2008

All rights reserved. The content of this electronic publication may be reproduced, in whole or in part, and by any means, without further permission from Statistics Canada, subject to the following conditions: that it be done solely for the purposes of private study, research, criticism, review or newspaper summary, and/or for non-commercial purposes; and that Statistics Canada be fully acknowledged as follows: Source (or "Adapted from", if appropriate): Statistics Canada, year of publication, name of product, catalogue number, volume and issue numbers, reference period and page(s). Otherwise, no part of this publication may be reproduced, stored in a retrieval system or transmitted in any form, by any means—electronic, mechanical or photocopy—or for any purposes without prior written permission of Licensing Services, Client Services Division, Statistics Canada, Ottawa, Ontario, Canada K1A 0T3.

April 2008

Catalogue no. 75F0002MIE, no. 003  
ISSN 1700-2840  
ISBN 978-0-662-48486-8

Frequency: occasional

Ottawa

La version française de cette publication est disponible sur demande (n° 75F0002MIF au catalogue).

---

### Note of appreciation

Canada owes the success of its statistical system to a long-standing partnership between Statistics Canada, the citizens of Canada, its businesses, governments and other institutions. Accurate and timely statistical information could not be produced without their continued cooperation and goodwill.

## **Executive summary**

The *Survey of Labour and Income Dynamics* (SLID) is a longitudinal survey which collects information related to the standard of living of individuals and their families. By interviewing the same people over a period of six years, changes and the causes of these changes can be monitored.

A preliminary interview of background information is collected for all respondents aged 16 and over, who enter the SLID sample. Preliminary interviews are conducted for new household members during their first labour and income interview after they join the household. A labour and income interview is collected each year for all respondents 16 years of age and over.

The purpose of this document is to present the questions, possible responses and question flows for the 2007 preliminary, labour and income questionnaire (for the 2006 reference year).

FOR INFORMATION ONLY

## Table of contents

1 Introduction.....	5
2 Content.....	5
3 How to read this document .....	12
4 What's new .....	13
5 Preliminary interview.....	15
5.1 EX Module.....	15
5.2 DE Module.....	21
6 Labour interview .....	34
6.1 DA Module .....	34
6.2 CH Module.....	47
6.3 SE Module .....	91
6.4 CO Module.....	94
6.5 SP Module.....	98
6.6 ED Module.....	108
6.6.1 EP Module .....	145
6.7 DI Module.....	165
7 Income interview .....	171
7.1 Income edits.....	187
7.2 On-line income help (F1).....	188

FOR INFORMATION ONLY

## 1 Introduction

Every January, the *Survey of Labour and Income Dynamics* (SLID) interview is conducted using computer-assisted interviewing (CAI). CAI is paperless interviewing. This document is therefore a written approximation of the CAI interview, or the questionnaire. The CAI process is as follows:

- (a) A question appearing on the computer screen is read aloud to the respondent;
- (b) The respondent's answer is directly entered by the interviewer;
- (c) Based on the answer given, and/or age or other flow criterion, the computer determines the next question to be asked and displays it on the screen.

A preliminary interview of background information is collected for all respondents aged 16 and over who enter the *Survey of Labour and Income Dynamics* (SLID) sample. For the majority of the longitudinal respondents, this occurs when a new panel is introduced and the preliminary information is collected during the first labour and income interview. However, all persons living with a longitudinal respondent are also interviewed for SLID. Preliminary interviews are conducted for new household members (joiners) during their first labour and income interview after they join the household. Longitudinal persons who have turned 16 while their household is in the SLID sample are then eligible for SLID interviews so they are asked the preliminary interview questions during their first labour and income interview.

A labour and income interview is collected each year for all respondents 16 years of age and over. Respondents have the option of answering income questions during the interview, or of giving Statistics Canada permission to access their income tax records.

In January 2007, data was collected for reference year 2006 from panels 4 and 5. Panel 4, in its fifth year, consisted of approximately 17,000 households. Panel 5, in its second year, also consisted of approximately 20,000 households.

This research paper presents the content of the 2007 preliminary, labour and income interview (for reference year 2006), including question wording, possible responses and flows of questions.

## 2 Content

The preliminary interview is comprised of three main modules:

- EX: Work experience – data on both part- and full-time work;
- DE: Family and personal history – marital history, birth history, mother tongue, place of birth, ethnic origin;
- EP: Educational attainment – certificates and degrees, years of schooling and parents' level of education. Although the EP questions are part of the

preliminary interview, they are asked within the education module of the labour interview.

The labour and income interview is comprised of eight main modules:

**DA:** Dates – Employer start and end dates are collected for up to six employers during the year. This module has an employer roster (a list of all employers the person worked for during the year), and a ghost employer roster (a list of former employers reported in previous interviews). Feeding back of employer names from the previous January also occurs in this module. For a person on unpaid absence at the beginning of last January, the absence as well as the employer name is fed back.

Regarding “don’t know” responses in employer dates: To collect information on an employer, the interviewer must be able to establish the date the person started working for that employer. If the interviewer is able to establish the month the job began, but not the day, the computer will set the day to 01 and the employer will be accepted. Similarly, if the interviewer can establish the month the job ended, but not the day, the computer will set the day to 28. However, if the interviewer cannot get an estimate of the month in which the job started or ended, it is impossible to proceed with that employer, and it is deleted from the roster. If the respondent reports no employers during the past year, the respondent skips to SE.

The following classification of jobs is used in DA:

**Job type 1** - a job at which the respondent was working on December 31<sup>st</sup> of the previous reference year.

**Job type 2** - a job at which the respondent was not working on December 31<sup>st</sup> of the previous reference year but to which he/she was attached (i.e. on temporary lay-off or away on an absence of more than a week).

**Job type 3** - a job not previously identified in the survey, generally one at which the respondent started working during the reference year.

Jobless spells are derived from the dates of employment.

Employment with each employer is characterized as ended or un-ended, referring to whether the respondent was working for the employer at the end of the reference year. If a job type 1 is denied, the job is deleted without an array of probing questions. For job type 2, one probing question is asked if the job is denied.

**CH:** Characteristics – This will be collected for up to six employers per respondent. For job type 1 and 2, information on employer name, and type of work performed is fed back to the respondent. A change in

occupation and wages can be recorded, as can one change in work schedule for job types 1 and 2. This allows greater precision in deriving implicit hourly wage rates or total annual earnings from an employer (total annual earnings from all employers will also be collected in May in the income interview). The number of absences of one week or more (except paid vacation), and details on the first and last absences with each employer are also recorded.

- SE: Search – If there was a jobless spell identified in ‘DA’ or if the respondent did not work at any time in the year, the flow will be directed to this module. For each jobless spell, there are a series of questions on job search, and the desire for employment. For people who begin the year with a jobless spell, the search status in January is fed back to the respondent only if they were looking for work.
- CO: Compensation – This module asks questions regarding receipt of Employment Insurance, Social Assistance, or Workers’ Compensation and the months in which it was received during the reference year. This information is collected for everyone, independently of any reported job absences and jobless spells.
- SP: Spend – This module requests information on support payments, both paid and received and on child care expenses. Also, questions on inter-household transfer payments (both monetary and non-monetary) were asked for the first time in reference year 2006.
- ED: Education – This module on formal education includes educational activity during the year, and degrees, certificates or diplomas obtained. If respondents attended more than one type of educational institution, several flows will result providing information also on field of study, program length, and time attended (months, weeks, hours). By asking question ED\_Q150 about other degrees, certificates or diplomas received during the reference year, this identifies situations where a respondent received a degree in the reference year although the program finished the previous year. Questions are asked to identify whether respondents have ever received a student loan and, if so, how much was borrowed and how much is still owed. The education module also contains a few questions on the most important work-related course taken by the respondent.
- DI: Disability – This module contains questions concerning disability which are asked of all respondents. The basic structure of the questions concern disability at home, at work and in other activities, but a distinction is made in the questions asked for those who worked versus those who didn’t work in the reference year. No questions are asked about disability at work for respondents aged 70+.

**IN:** Income – This module asks for the amounts of income received from various sources. Everyone age 16 and over receive these questions unless they give Statistics Canada permission to access their Canada Revenue Agency tax records. Edits are programmed using the information collected in the labour portion of the survey to remind respondents that they had reported being employed or receiving employment insurance, social assistance or workers' compensation, to ensure that the amounts are entered. Flags are also set during the labour interview so that amounts are collected where applicable for: employer pension plan contributions; professional membership dues or malpractice insurance premium payments; and union dues.

The major components of the preliminary, labour and income modules are listed below.

#### Preliminary modules

##### **EX**

- When started working full time
- Any years did not work
- Ever worked part time

##### **DE**

- Dates of marriage, divorce, separation, living common-law
- Number of children gave birth to or fathered and year first child born
- Adopted or raised any other children
- Mother tongue, country of birth, ethnic origin
- Immigrant status, Treaty or Registered Indian status

##### **EP**

- Years of elementary and high school completed
- Certificates and degrees received prior to the reference year
- Highest level of education of parents

#### Labour and income modules

##### **DA**

- Job tenure
- Reasons for leaving job

##### **CH**

- General job characteristics
- Supervisory/managerial responsibilities
- Work schedule
- Wages & fringe benefits
- Absences from work for one or more weeks

**SE**

- Jobless spells
- Job search activities

**CO**

- Receipt of employment insurance
- Receipt of Workers' Compensation
- Receipt of Social assistance or welfare

**SP**

- Receipt of support payments
- Payment of support
- Payments for child care
- Inter-household transfer payments

**ED**

- Type of educational establishment
- Months/hours attended school
- Information on any diplomas, certificates or degrees earned
- Student loans; amount borrowed and amount owed
- Information on the most important work-related course taken

**DI**

- Identifies disabilities/activity limitations
- Impact of condition on amount and/or the ability to work

**IN**

- Request permission to access income tax records
- Amounts of income from various sources
- Amount of employer pension plan contributions
- Amount paid for professional membership dues or malpractice premiums
- Amount paid in union dues

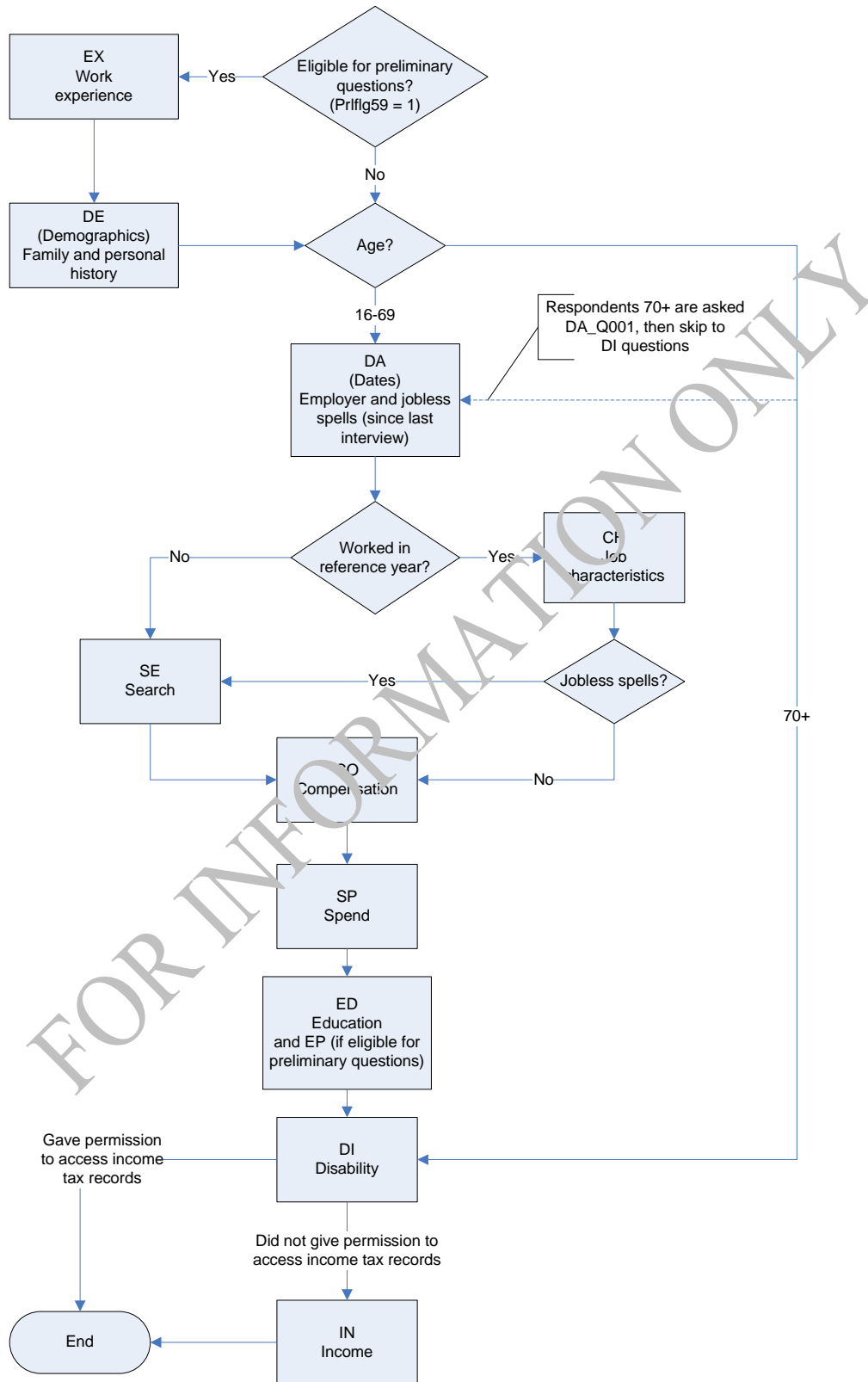
The general flow of the preliminary, labour and income interview is given in the flow chart on the next page.

An initial divergence based on age can be seen. Those aged 16-69 are asked the labour series of questions, while those 70 years and over flow to DA\_Q001 (main activity) and then to the Disability (DI) module. For the former, if the respondent worked since the last interview, the characteristics of up to six jobs are asked, followed by identification of jobless spells. If a jobless spell occurred, the respondent is asked the Search (SE) series of questions. These are also asked for respondents who have not worked since the last labour interview. The Compensation (CO) questions are then asked of all respondents, as are subsequent modules on Spend (SP), Education (ED) and Disability (DI). Income (IN)

questions are only asked if the respondent does not give Statistics Canada permission to access their Canada Revenue Agency tax files.

FOR INFORMATION ONLY

## General flow of the preliminary, labour and income interview



### 3 How to read this document

This document is a written approximation of the CAI interview, or the “questionnaire”. The CAI process is as follows:

- (a) A question appearing on the computer screen is read aloud to the respondent.
- (b) The respondent’s answer is directly entered into the computer by the interviewer.
- (c) Based on the answer given, and/or age or other flow criteria, the computer determines the next question to be asked and displays it on the screen.

**Question numbers:** For each section, the question numbers refer to the actual numbers used in the collection application which appear on an interviewer’s computer screen. Bold text is read, as worded, by the interviewer. Instructions for the interviewer are preceded by the word, “INTERVIEWER” and are not read out loud to the respondent.

**Naming conventions:** Naming conventions were changed to conform to the standards for Statistics Canada social surveys.

Questions with Q (e.g. EP\_Q001) = question text read to a respondent  
C (e.g. EP\_C001) = internal check  
N (e.g. EP\_N035) = interviewer instructions  
E (e.g. EP\_E001) = interviewer instruction edit  
? (e.g. ?DA\_Q001) = F1 help available

**Pre-fill items:** Shown in square brackets [ ], are items specific to each respondent’s interview. The application inserts the relevant information into the question, making it simply a matter of reading for the interviewer. Pre-fill items include:

[respondent] – This is the first and last name of the household member to whom the questions refer. This is not necessarily the person who is talking to the interviewer.

[fname] – This is the first name of the household member to whom the questions refer. This is not necessarily the person who is talking to the interviewer

[current year] – This is the year **during which** the information is collected (2007).

[reference year] – This is the year **for which** the information is collected (2006).

[previous reference year] – This is the year prior to the reference year (2005).

[age] – This is the respondent’s age in years, calculated as of January 1 of the current year.

[years ago] – This is the number of years ago the respondent first started working.

[employer] - This is the employer referred to in the question. Questions may be asked for a maximum of six employers. In each case, the specific employer's name is placed in the pre-fill item.

[class of worker] - Indicates whether the respondent is a paid worker, self-employed or working in a family business without pay.

[type of work] - This is a short description of the respondent's occupation or type of work performed, at last contact.

[industry] - This is a description of the industry of the employer as provided by the respondent.

[start date] and [end date] - Depending on the question, these refer to either the start and end dates of a specific job, of an unpaid absence, or a jobless spell.

[prefill from Empl.oldwage and Empl.oldwageu] - Wage reported previous year for respondent.

**Headers:** For some questions, important information is noted at the top of the screen. In this document, this information is given at the beginning of each section description.

**Ranges:** Hard ranges are specified for some of the questions. The hard range gives the highest and lowest acceptable response values. The system will not accept a number outside the range. For example, in CH\_Q110 (number of employees supervised directly) a hard range of 1 - 995 exists. If the interviewer tries to enter a number greater than 995, the system will not accept this.

The soft range specifies an upper limit which, if exceeded, will result in a probe to confirm that the amount entered is correct. If it is correct, the interviewer can enter it as long as it does not exceed the hard range. For example, if the respondent states that the number of people supervised was 65, this exceeds the soft range of > 60. If confirmed as correct, the interviewer can enter this amount as it does not exceed the 995 upper limit of the hard range.

**Dates:** All dates are in DD/MM/YYYY format unless otherwise specified.

## 4 What's new

### New questions

SP\_R050, SP\_Q050, SP\_Q055, SP\_Q060, SP\_Q065, SP\_Q070, SP\_S070, SP\_Q075, SP\_Q080, SP\_Q085, SP\_Q090, SP\_Q095, SP\_S095

A new section of questions on inter-household transfer payments (monetary and non-monetary) was added to the spend (SP) module. These questions are asked of all respondents. Part of a household's income includes money transfers from other households, such as financial support a student gets from their parents or an elderly parent gets from their children. Canadian immigrants may also receive and send financial support from and to family members living in other countries which affects Canada's Balance of Payments.

ED\_Q220, ED\_Q225, ED\_Q230 and ED\_Q240

Student loan questions were asked in the education module for the first time for reference year 2005. Those questions (ED\_Q200, ED\_Q205, ED\_Q210) are now asked only of respondents eligible for the preliminary questions who answered “yes” to EP\_Q020 or EP\_Q065. Additional student loan questions have been added for reference year 2006 and will be asked each year the respondent reports attending a post-secondary institution in the reference year.

### **Modified questions**

DA\_C005

New logic was added so that a respondent who reported working during the reference year in the preliminary questions (EX\_Q001), will not be asked DA\_Q015 and will skip to DA\_Q040 if their main activity in DA\_Q001 was ‘not working’. Respondents who don't get preliminary questions will still go to DA\_Q015, if their main activity in DA\_Q001 was ‘not working’.

DA\_C006

A new condition was added so that if EX\_Q001 = Yes (respondent worked in the reference year) and all previous employers have been denied, they will be asked DA\_Q040 (You reported earlier that you worked in 2006. For whom did you work?). This condition was added as a result of the new logic added in DA\_C005.

DA\_Q015 and DA\_Q120

A flow change was made for a “yes” response to go to DA\_Q040 instead of DA\_Q030 which has been deleted (ghost employer question).

CH\_Q248

A flow change was made for “no/refuse/don't know” responses to go to CH\_Q254 (instead of CH\_Q260). Respondents who said that they had the same wage as the previous year will now be asked about tips and commissions.

SP\_C005, SP\_C010, SP\_Q025, SP\_Q030, SP\_Q035, SP\_Q040, SP\_Q045

Flow changes from these questions were made to go to a new series of questions on inter-household transfer payments.

SP\_C010

New logic has been added so that if a respondent reports in the preliminary questions (DE\_Q060 or DE\_Q065 and DE\_Q086) that they did not give birth to/father/adopt any children, they will not be asked questions on childcare. The new flag “Nokidflg” will be set to 1 if (DE\_Q060 = No or DE\_Q065 = No) and DE\_Q086 = No. If Nokidflg = 1, the respondent did not give birth to/father/adopt any children, the childcare questions will not be asked. However, if the respondent did not answer the DE questions (i.e. was not eligible for the

preliminary questions) and children were reported in the household in the entry component, the childcare questions will be asked.

#### SP\_C020

Logic has been added so that previously interviewed respondents (prflg59 = 2) will not be asked childcare questions if they are less than 20 years of age.

#### ED\_Q205 and ED\_Q210

The maximum amount allowed in these fields has been increased to \$999,995 (from \$99,995).

#### Deleted questions

DA\_Q030, C030, N035, C035, DA\_Q055, DA\_N055

Ghost employers are no longer being used in the application. All questions related to ghost employers have been deleted.

## 5 Preliminary interview

### 5.1 EX Module

PR\_N001: INTERVIEWER: Select the name of the person who is providing the information. If the person is not on the list, select 'Non-Household member'.

If Hhinfo.prflg59 = 1 (Joiner, new panel  
or a member who turned 16) go to EX\_Q001

If Hhinfo.prflg59 = 2 (previously  
interviewed respondent) go to DA\_Q001

?EX\_Q001: **In [reference year], was [respondent] working at a job or business?**

**In [reference year], were you working at a job or business?**

1. Yes
2. No
8. Refuse
9. Don't know

If Yes go to EX\_Q015

Otherwise go to EX\_Q005

EX\_Q005: **Has he ever worked at a job or business?**

**Has she ever worked at a job or business?**



?EX\_Q020: **When did he first start working full time?**

**When did she first start working full time?**

**When did you first start working full time?**

Answer given in:

- |    |                     |               |
|----|---------------------|---------------|
| 1. | Number of years ago | go to EX_N025 |
| 2. | Age started         | go to EX_N030 |
| 3. | Year started        | go to EX_N035 |
| 8. | Refuse              | go to DE_R001 |
| 9. | Don't know          | go to DE_R001 |

EX\_N025: INTERVIEWER: Enter years ago started working full time  
Enter 0 if less than one year.

Hard range: minimum: 0  
maximum: [age]-10

Soft range: 60

If [years ago] < 2 or Refuse/Don't know go to EX\_Q070  
If [years ago] > 1 and < 60 go to EX\_Q050  
If [years ago] > 60 go to EX\_E025

EX\_E025: **The number of years reported appears high. Is this correct?**

If correct go to EX\_Q050

EX\_N030: INTERVIEWER: Enter age started working full time

Hard range: minimum: 10  
maximum: [age]

Soft range: 60

Note: [years ago] = (Hhinfo.Age59 - EX\_N030)

If [years ago] < 2 or Refuse/Don't know go to EX\_Q070  
If [years ago] > 1 and < 60 go to EX\_Q040  
If [years ago] > 59 go to EX\_E030

EX\_E030: **The age reported appears high. Is this correct?**

If correct go to EX\_Q040

EX\_N035: INTERVIEWER: Enter year started working full time

Hard range: minimum: [reference year] - ([age] - 10)  
(10 years old)  
maximum: [current year]

Note: [years ago] = (current year - EX\_N035)

If [years ago] < 2 or Refuse/Don't know go to EX\_Q070

If [years ago] > 1 go to EX\_Q040

EX\_Q040: **That means he first started working full time about [years ago] years ago. Does this seem about right?**

**That means she first started working full time about [years ago] years ago. Does this seem about right?**

**That means you first started working full time about [years ago] years ago. Does this seem about right?**

1. Yes go to EX\_Q050
2. No go to EX\_N045
8. Refuse go to DE\_R001
9. Don't know go to DE\_R001

EX\_N045: INTERVIEWER: Enter years ago started working full time  
Enter 0 if less than one year

Hard range: minimum: 0  
maximum: [age] - 10

If [years ago] < 2 or Refuse/Don't know go to EX\_Q070

If [years ago] > 1 go to EX\_Q050

?EX\_Q050: **In those [years ago] years, were there any complete years when he did not work at all?**

**In those [years ago] years, were there any complete years when she did not work at all?**

**In those [years ago] years, were there any complete years when you did not work at all?**

1. Yes go to EX\_Q055

- 2. No go to EX\_Q060
- 8. Refuse go to DE\_R001
- 9. Don't know go to DE\_R001

EX\_Q055: **How many years?**

Hard range: minimum: 1  
maximum: [years ago - 1]

Soft range: 60

go to EX\_Q065

EX\_Q060: **In those [years ago] years, how many years did he work all or most of the year? (6 months or more)**

**In those [years ago] years, how many years did she work all or most of the year? (6 months or more)**

**In those [years ago] years, how many years did you work all or most of the year? (6 months or more)**

INTERVIEWER: If none enter 0

Hard range: minimum: 0  
maximum: [years ago]

- If 0 go to EX\_Q070
- If Refuse/Don't know go to DE\_R001
- Otherwise go to EX\_Q067

EX\_Q065: **In the remaining ([years ago] minus response in EX\_Q055) years, how many did he work all or most of the year? (6 months or more) (include full time and part time)**

**In the remaining ([years ago] minus response in EX\_Q055) years, how many did she work all or most of the year? (6 months or more) (include full time and part time)**

**In the remaining ([years ago] minus response in EX\_Q055) years, how many did you work all or most of the year? (6 months or more) (include full time and part time)**

INTERVIEWER: If none enter 0

Hard range: minimum: 0

maximum: [years ago] - response to EX\_Q055

If 0 go to EX\_Q070  
If Refuse/Don't know go to DE\_R001  
Otherwise go to EX\_Q067

EX\_Q067: **In how many of these [response to EX\_Q060 or EX\_Q065] years did he work mainly full time? By full time, I mean 30 or more hours per week.**

**In how many of these [response to EX\_Q060 or EX\_Q065] years did she work mainly full time? By full time, I mean 30 or more hours per week.**

**In how many of these [response to EX\_Q060 or EX\_Q065] years did you work mainly full time? By full time, I mean 30 or more hours per week.**

INTERVIEWER: If none enter 0

Hard range: minimum: 0  
maximum: response to EX\_Q060 or EX\_Q065

If Refuse/Don't know go to DE\_R001  
Otherwise go to EX\_Q070

?EX\_Q070: **Not counting jobs while in school, has he ever worked part time? By part time I mean less than 30 hours per week.**

**Not counting jobs while in school, has she ever worked part time? By part time I mean less than 30 hours per week.**

**Not counting jobs while in school, have you ever worked part time? By part time I mean less than 30 hours per week.**

1. Yes
2. No
8. Refuse
9. Don't know

If Yes go to EX\_Q075  
Otherwise go to DE\_R001

EX\_Q075: **How many years has he worked part time?**

**How many years has she worked part time?**

**How many years have you worked part time?**

Hard range: minimum: 1  
maximum: [age] minus 10

Soft range: 60

If number of years < 2 or Refuse/Don't know go to DE\_R001  
If number of years > 59 go to EX\_E075  
Otherwise go to EX\_Q080

EX\_E075: **The number of years reported appears high. Is this correct?**

EX\_Q080: **In those [years from EX\_Q075] years, how many did he work all or most of the year? (6 months or more)**

**In those [years from EX\_Q075] years, how many did she work all or most of the year? (6 months or more)**

**In those [years from EX\_Q075] years, how many did you work all or most of the year? (6 months or more)**

Hard range: minimum: 0  
maximum: [years in EX\_Q075]

Soft range: 60

If years > 59 go to EX\_E080  
Otherwise go to DE\_R001

EX\_E080: **The number of years reported appears high. Is this correct?**

**5.2 DE Module**

?DE\_R001: **Now I have a few questions about [respondent]'s family background. This is based on the date of birth and marital status reported earlier in the interview.**

**Now I have a few questions about your family background. This is based on the date of birth and marital status reported earlier in the interview.**

INTERVIEWER: Press <Enter> to continue.

DE\_C001: If Hhinfo.marital status = married and

if Hhinfo.maristmm and maristyy = blank go to DE\_Q015  
Otherwise go to DE\_Q020

If Hhinfo.marital status = common-law and  
if Hhinfo.maristmm and maristyy = blank go to DE\_Q030  
Otherwise go to DE\_Q035

If Hhinfo.marital status = widowed and  
if Hhinfo.maristmm and maristyy = blank go to DE\_Q040  
Otherwise go to DE\_Q045

If Hhinfo.marital status = separated or  
divorced go to DE\_Q005

If Hhinfo.marital status = single go to DE\_C060

If Hhinfo.marital status = Refuse or  
Don't know go to DE\_C060

1. Married
2. Living common-law
3. Widowed
4. Separated
5. Divorced
6. Single/never married
8. Refuse
9. Don't know

?DE\_Q005: **What was the date of his separation?** (Not the date of divorce)

**What was the date of her separation?** (Not the date of divorce)

**What was the date of your separation?** (Not the date of divorce)

Interviewer enters month and year

Hard range: minimum: [current year] minus ([age] - 14)  
(15 years old)  
maximum: [current year]

?DE\_Q010: **What date did that marriage begin?**

Interviewer enters month and year

Hard range: minimum: [current year] minus ([age] - 14)  
(15 years old)

maximum: [current year]

DE\_C010: Is the date of this marriage (DE\_Q010) before date of separation (DE\_Q005)?

Yes go to DE\_Q020  
No go to DE\_E010

DE\_E010: Check dates. Date of separation is before date of marriage.

go to DE\_Q020

?DE\_Q015: **What was the date of his current marriage?**

**What was the date of her current marriage?**

**What was the date of your current marriage?**

Interviewer enters month and year

Hard range: minimum: [current year] minus ([age] - 14)  
(15 years old)  
maximum: [current year]

DE\_Q020: **Was this his first marriage?**

**Was this her first marriage?**

**Was this your first marriage?**

1. Yes
2. No
8. Refuse
9. Don't know

If No go to DE\_Q025  
Otherwise go to DE\_C060

DE\_Q025: **What was the date of his first marriage?**

**What was the date of her first marriage?**

**What was the date of your first marriage?**

Interviewer enters month and year

Hard range: minimum: [current year] minus ([age] - 14)  
(15 years old)  
maximum: [current year]

go to DE\_C014

DE\_C014: If marital status = married go to DE\_C015  
Otherwise (marital status = separated  
or divorced) go to DE\_C025

DE\_C015: Is the date of first marriage (DE\_Q025) before the date of current  
marriage (DE\_Q015)?

Yes go to DE\_C060  
No go to DE\_E025

DE\_C025: Is the date of first marriage (DE\_Q025) before date of most recent  
marriage (DE\_Q010)?

Yes go to DE\_C050  
No go to DE\_E025

DE\_E025: Check dates. Date of first marriage is after date of most recent  
marriage.

go to DE\_C060

DE\_Q030: **When did he and his partner begin to live together?**

**When did she and her partner begin to live together?**

**When did you and your partner begin to live together?**

Interviewer enters month and year

Hard range: minimum: [current year] minus ([age] - 14)  
(15 years old)  
maximum: [current year]

DE\_Q035: **Has he ever been married?**

**Has she ever been married?**

**Have you ever been married?**

1. Yes

- 2. No
- 8. Refuse
- 9. Don't know

If Yes go to DE\_Q037  
Otherwise go to DE\_C060

DE\_Q037: **Has he been married more than once?**

**Has she been married more than once?**

**Have you been married more than once?**

If Yes go to DE\_Q055  
Otherwise go to DE\_Q054

DE\_Q040: **When was he widowed?**

**When was she widowed?**

**When were you widowed?**

Interviewer enters month and year

Hard range: minimum: [current year] minus ([age] - 14)  
(15 years old)  
maximum: [current year]

DE\_Q045: **Was this his first marriage?**

**Was this her first marriage?**

**Was this your first marriage?**

- 1. Yes
- 2. No
- 8. Refuse
- 9. Don't know

If Yes/DK go to DE\_Q050  
If No go to DE\_Q055  
Otherwise (Refuse) go to DE\_C060

DE\_Q050: **What was the date of that marriage?**

Interviewer enters month and year

Hard range: minimum: [current year] minus ([age] - 14)  
(15 years old)  
maximum: [current year]

go to DE\_C048

DE\_C048: If year in DE\_Q050 = Refuse/Don't know go to DE\_C060  
Otherwise go to DE\_C049

DE\_C049: If marital status = widowed and  
year in DE\_Q040 = Refuse/Don't know go to DE\_C060  
Otherwise go to DE\_C050

DE\_C050: Is the date of marriage (DE\_Q050) before date widowed  
(DE\_Q040)?

Yes go to DE\_C060  
No go to DE\_E050

DE\_E050: Check dates. The date the respondent was widowed is before the  
date of marriage.

go to DE\_C060

DE\_Q054: **What was the date of his marriage?**

**What was the date of her marriage?**

**What was the date of your marriage?**

Interviewer enters month and year

Hard range: minimum: [current year] minus ([age] - 14)  
(15 years old)  
maximum: [current year]

go to DE\_C051

DE\_C051: If year in DE\_Q054 is Refuse/Don't know go to DE\_C060  
Otherwise go to DE\_C052

DE\_C052: If marital status = common-law and  
year in DE\_Q030 is Refuse/Don't know go to DE\_C060  
Otherwise go to DE\_C054

DE\_Q055: **What was the date of his first marriage?**

**What was the date of her first marriage?**

**What was the date of your first marriage?**

Interviewer enters month and year

Hard range: minimum: [current year] minus ([age] - 14)  
(15 years old)

maximum: [current year]

go to DE\_C040

DE\_C040: If year in DE\_Q055 is Refuse/Don't know go to DE\_C060  
Otherwise go to DE\_C041

DE\_C041: If marital status = widowed go to DE\_C042  
Otherwise go to DE\_C043

DE\_C042: If year in DE\_Q040 is Refuse/Don't know go to DE\_C060  
Otherwise go to DE\_C044

DE\_C043: If year in DE\_Q030 is Refuse/Don't know go to DE\_C060  
Otherwise (marital status = common-law) go to DE\_C055

DE\_C044: Is the date of first marriage (DE\_Q055) before the date widowed  
(DE\_Q040)?

Yes go to DE\_C060

No go to DE\_E040

DE\_E040: Check dates. The date the respondent was widowed is before the  
date of the first marriage.

DE\_C054: Is the date of marriage (DE\_Q054) before the date started living  
together (DE\_Q030)?

Yes go to DE\_C060

No go to DE\_E054

DE\_E054: Check dates. Date started living together is before date of  
marriage.

DE\_C055: Is the date of first marriage (DE\_Q055) before the date started  
living together (DE\_Q030)?

Yes go to DE\_C060  
No go to DE\_E055

DE\_E055: Check dates. Date started living together is before date of first marriage.

DE\_C060: Is age59 >17 years of age?

Yes go to DE\_C061  
No go to DE\_Q095

DE\_C061: If respondent is female go to DE\_Q060  
Otherwise (respondent is male) go to DE\_Q065

?DE\_Q060: **Has she given birth to any children?**

**Have you given birth to any children?**

INTERVIEWER: If you know that the respondent has birth children, you may reword the question of confirm. This question is asked to everyone 18 years and over, regardless of marital status because research shows that having children can affect a person's education, work experience and income.

1. Yes
2. No
8. Refuse
9. Don't know

If Yes go to DE\_Q070  
Otherwise go to DE\_Q086

?DE\_Q065: **Has he fathered any children?**

**Have you fathered any children?**

INTERVIEWER: If you know that the respondent has fathered children, you may reword the question to confirm. This question is asked of everyone 18 years and over, regardless of marital status because research shows that having children can affect a person's education, work experience and income.

- 1. Yes
- 2. No
- 8. Refuse
- 9. Don't know

If Yes go to DE\_Q070  
 Otherwise go to DE\_Q086

?DE\_Q070: **How many?**

Hard range: minimum: 1  
 maximum: 20

If Refuse/Don't know go to DE\_Q085  
 Otherwise go to DE\_C071

DE\_C071: If sex is female go to DE\_Q075  
 Otherwise (sex is male) go to DE\_Q080

?DE\_Q075: **In what year did she give birth to her first child?**

**In what year did you give birth to your first child?**

Hard range: minimum: [current year] - ([age] - 11)  
 (12 years old)  
 maximum: If [age] < 50: [current year]  
 If [age] > 49: [current year] minus  
 ([age] - 48)

If Refuse/Don't know go to DE\_Q085  
 Otherwise go to DE\_C075

DE\_C075: Is the date of birth of first child less than ([current year] minus  
 ([age] - 14))? (15 years old)

Yes go to DE\_E075  
 No go to DE\_Q085

DE\_E075: Check dates. **Her first child was born before she was 15. Is this correct?**

Check dates. **Your first child was born before you were 15. Is this correct?**

go to DE\_Q085

?DE\_Q080: **In what year was the first child born?**

Hard range: minimum: [current year] minus ([age] - 14)  
(15 years old)  
maximum: If [age] <= 80: [current year]  
If [age] > 80: [current year] minus  
([age] - 80)

If Refuse/Don't know go to DE\_Q085  
Otherwise go to DE\_C075

?DE\_Q085: **Other than children he has fathered, has he adopted or raised any children?**

**Other than children to whom she has given birth, has she adopted or raised any children?**

**Other than children you have fathered, have you adopted or raised any children?**

**Other than children to whom you have given birth, have you adopted or raised any children?**

1. Yes
2. No
8. Refuse
9. Don't know

If Yes go to DE\_Q090  
Otherwise go to DE\_Q095

?DE\_Q086: **Has he adopted or raised any children?**

**Has she adopted or raised any children?**

**Have you adopted or raised any children?**

1. Yes
2. No
8. Refuse
9. Don't know

If (DE\_Q060 = No or DE\_Q064 = No) and DE\_Q086 = No, set  
Nokidflg to 1

If Yes go to DE\_Q090

Otherwise go to DE\_Q095

DE\_Q090: **How many?**

Hard range: minimum: 1  
maximum: 20

?DE\_Q095: **What is the language that he first learned at home in childhood and still understands?**

**What is the language that she first learned at home in childhood and still understands?**

**What is the language that you first learned at home in childhood and still understand?**

INTERVIEWER: If the person no longer understands the first language learned, indicate the second language learned.

1. English
2. French
3. Both English and French
4. Other (specify)
8. Refuse
9. Don't know

If answered "Other" go to DE\_S095  
Otherwise go to DE\_Q100

DE\_S095: INTERVIEWER: Specify

Maximum: 80 characters

go to DE\_Q100

?DE\_Q100: **In what country was he born?**

**In what country was she born?**

**In what country were you born?**

- |             |                 |
|-------------|-----------------|
| 01. Canada  | 09. Philippines |
| 02. Britain | 10. Poland      |
| 03. Italy   | 11. Portugal    |
| 04. USA     | 12. Netherlands |

- |               |                     |
|---------------|---------------------|
| 05. China     | 13. Other (specify) |
| 06. Germany   | 98. Refuse          |
| 07. Hong Kong | 99. Don't know      |
| 08. India     |                     |

If answered "Canada"	go to DE_Q115
If answered "Other"	go to DE_S100
Otherwise	go to DE_Q105

DE\_S100: INTERVIEWER: Specify

Maximum: 80 characters

go to DE\_Q105

?DE\_Q105: **Is he now, or has he ever been, a landed immigrant?**

**Is she now, or has she ever been, a landed immigrant?**

**Are you now, or have you ever been, a landed immigrant?**

INTERVIEWER: A "landed immigrant" is a person who has been granted the right to live in Canada permanently by immigration authorities.

1. Yes
2. No
8. Refuse
9. Don't know

If Yes	go to DE_Q110
Otherwise	go to DE_Q115

DE\_Q110: **In what year did he first become a landed immigrant?**

**In what year did she first become a landed immigrant?**

**In what year did you first become a landed immigrant?**

INTERVIEWER: If exact year is not known, probe for best estimate.

Hard range: minimum: [reference year] minus [age]  
maximum: [current year]

If Refuse/Don't know	go to DE_Q130
----------------------	---------------

Otherwise

go to DE\_Q125

?DE\_Q115: **Was his mother born in Canada?**

**Was her mother born in Canada?**

**Was your mother born in Canada?**

1. Yes
2. No
8. Refuse
9. Don't know

?DE\_Q120: **Was his father born in Canada?**

**Was her father born in Canada?**

**Was your father born in Canada?**

1. Yes
2. No
8. Refuse
9. Don't know

?DE\_Q125: **Is he a Treaty Indian or a Registered Indian as defined by the *Indian Act of Canada*?**

**Is she a Treaty Indian or a Registered Indian as defined by the *Indian Act of Canada*?**

**Are you a Treaty Indian or a Registered Indian as defined by the *Indian Act of Canada*?**

1. Yes (Treaty Indian or Registered Indian)
2. No
8. Refuse
9. Don't know

?DE\_Q130: **To which ethnic or cultural group(s) did his ancestors belong?**

**To which ethnic or cultural group(s) did her ancestors belong?**

**To which ethnic or cultural group(s) did your ancestors belong?**

INTERVIEWER: If Indian, probe for North American or East

Mark all that apply

01. Canadian (probe for any other background)
02. French
03. English
04. Chinese
05. Italian
06. German
07. Scottish
08. Irish
09. Cree
10. Micmac
11. Métis
12. Inuit (Eskimo)
13. East Indian
14. Ukrainian
15. Dutch
16. Polish
17. Portuguese
18. Filipino
19. Jewish
20. Greek
21. Jamaican
22. Vietnamese
23. Lebanese
24. Chilean
25. Somali
26. Other (specify)
98. Refuse
99. Don't know

If answered "Other"

go to DE\_S130

Otherwise

go to DA\_Q001

DE\_S130: INTERVIEWER: Specify

Maximum: 80 characters

go to DA\_Q001

## 6 Labour interview

### 6.1 DA Module

Header: first and last name of respondent, industry and class of worker

?DA\_Q001: I'd like to ask you a few questions about his main activity at the end of [reference year]. Was [fname]'s main activity . . .

I'd like to ask you a few questions about her main activity at the end [reference year]. Was [fname]'s main activity . . .

I'd like to ask you a few questions about your main activity at the end of [reference year]. Was your main activity . . .

01. Working at a job or business or self employed?
02. Looking for work?
03. Going to school?
04. Keeping house?
05. Caring for other family members including young children?
06. Retired?
07. Long term illness or disability?
08. Doing volunteer work?
09. No main activity?
10. Other (specify)
98. Refuse
99. Don't know

If answered 10 "Other" go to DA\_S001

If answered 01 "Working" set FlagJobs to 1 and go to DA\_C005

Otherwise go to DA\_C005

DA\_S001: INTERVIEWER: Specify

Maximum: 80 characters

go to DA\_C005

If DA\_Q01 = 01 "Working" and compinfo.emtyp69 <> 1 and compinfo.emtyp69 <> 2, then set job type to 3 (new job)

DA\_C005: If age > 69 go to DI\_C001

Otherwise,

If job type = 1 go to DA\_Q005

If job type = 2 go to DA\_Q010

If (job type <> 1 or 2) and DA\_Q001 <> 01 and EX\_Q001 = Yes go to DA\_Q040

If (job type <> 1 or 2) and DA\_Q001 <> 01 and EX\_Q001 <> Yes go to DA\_C015

If (job type <> 1 or 2) and DA\_Q001 = 01 go to DA\_Q040  
If (job type <> 1 or 2) and DA\_Q001 <> 01  
and prflg59 = 2 go to DA\_Q015

DA\_Q005: **Based on our last interview, he was working for [employer] around the beginning of January [reference year]. Is this correct?**

**Based on our last interview, she was working for [employer] around the beginning of January [reference year]. Is this correct?**

**Based on our last interview, you were working for [employer] around the beginning of January [reference year]. Is this correct?**

INTERVIEWER: Any spelling errors or clarifications can be made later in CH\_Q010

1. Yes (set FlagJobs to 1)
2. No
8. Refuse
9. Don't know

If Yes and: Compinfo.prflg59 = 1 go to DA\_C045 ;  
Compinfo.prflg59 = 2 go to DA\_Q085 and  
set start date to 01/01/[reference year].

If No/Refuse/Don't know go to DA\_E005

DA\_E005: If the name has changed but the employer is the same, this is NOT a new employer. Return to DA\_Q005 and change the response to 'Yes'. Otherwise, respondent is denying working for this employer in [reference year]. Press 'D' to delete from the Employer Roster.

go to DA\_C006

DA\_C006: If another job type 1 or 2 to be confirmed, go to DA\_C120  
Otherwise (all employers have been denied), then  
If prflg59 = 2, go to DA\_Q015  
Otherwise (prflg59 = 1):  
If EX\_Q001 = Yes, go to DA\_Q040;  
Otherwise, go to SE\_C001.

Header information: Industry, class of worker

?DA\_Q010: **Based on our interview of a year ago, he had a job with [employer], but he was not at work around the beginning of January [reference year]. Is this correct?** (any spelling errors or clarifications can be made later)

**Based on our interview of a year ago, she had a job with [employer], but she was not at work around the beginning of January [reference year]. Is this correct?** (any spelling errors or clarifications can be made later)

**Based on our interview of a year ago, you had a job with [employer], but you were not at work around the beginning of January [reference year]. Is this correct?** (any spelling errors or clarifications can be made later)

[Screen shows date absence began and reason for absence]

1. Yes (set FlagJobs to 1)
2. No
8. Refuse
9. Don't know

If Yes go to DA\_Q070  
If No/Refuse/Don't know go to DA\_Q025

?DA\_Q015: **Did he work at a job or business in [reference year]?**

**Did she work at a job or business in [reference year]?**

**Did you work at a job or business in [reference year]?**

1. Yes (set FlagJobs to 1)
2. No
8. Refuse
9. Don't know

If Yes go to DA\_Q040  
If No/Refuse/Don't know go to SE\_C001

DA\_C015: If EX\_Q005 = No/R/DK (never worked at a job or business) set jobless spell to all year and go to SE\_C001

If EX\_Q005 = Yes (has worked at a job or business), go to DA\_Q020

DA\_Q020: **When did he last work at a job or business?**

**When did she last work at a job or business?**

**When did you last work at a job or business?**

INTERVIEWER: If respondent reports working during [reference year] go back and change DA\_Q015 to 'Yes'.

Interviewer enters day/month/year

Hard range: minimum: [reference year] minus ([age] minus 10)  
(10 years old)  
maximum: [reference year] minus 1

go to SE\_C001

DA\_Q025: **Was he still working for [employer] around the beginning of January [reference year]?**

**Was she still working for [employer] around the beginning of January [reference year]?**

**Were you still working for [employer] around the beginning of January [reference year]?**

1. Yes
2. No
8. Refuse
9. Don't know

If Yes, set job type to 1 and:                      if Compinfo.prlflg59 = 1, go to DA\_C045;  
if Compinfo.prlflg59 = 2, go to DA\_Q085.

If No/Refuse/Don't know                      go to DA\_E025

DA\_E025: Respondent is denying working for this employer in [reference year]. Press 'D' to delete from the Employer Roster.

go to DA\_C120

DA\_Q040: **[You reported earlier that he worked in [reference year]]. For whom did he work?**

**[You reported earlier that she worked in [reference year]].  
For whom did she work?**

**[You reported earlier that you worked in [reference year]].  
For whom did you work?**

INTERVIEWER: Probe for name of business, government department or person.

Maximum: 50 characters

If EX\_Q001 = Yes and DA\_Q001 <> 01 and DA\_Q120 = Blank,  
invoke the prefill text in the question

go to DA\_C040

DA\_C040: Set job type to 3.  
If valid answer, set employer name.  
If Refuse/Don't know, set employer name to 'UNKOWN  
EMPLOYER'.

go to DA\_C045

DA\_C045: If Compinfo.prflg59 = 1 go to DA\_Q045  
If Compinfo.prflg59 = 2 go to DA\_Q050

?DA\_Q045: **When did he start working for [employer]?**

**When did she start working for [employer]?**

**When did you start working for [employer]?**

Interviewer enters day/month/year

Hard range: minimum: [reference year] minus ([age] minus 10)  
(10 years old)  
maximum: 31/12/[reference year]

If Refuse/Don't know in day or month set to 01  
If Refuse/Don't know in year go to DA\_E045  
Otherwise go to DA\_C046

DA\_E045: A value must be entered in year. Go back and enter a value.

DA\_C046: If the date reported in DA\_Q045 is prior to the reference year, then set the start date on the Employer Roster to January 1<sup>st</sup> of reference year;

Otherwise set start date to entry in DA\_Q045. This date is used to calculate jobless spells.

go to DA\_Q060

DA\_Q050: **When did he start working for [employer]?**

**When did she start working for [employer]?**

**When did you start working for [employer]?**

Interviewer enters day/month/year

If the date reported in DA\_Q050 is prior to the reference year, then set the start date on the Employer Roster to January 1<sup>st</sup> of reference year;

Otherwise set start date to entry in DA\_Q050. This date is used to calculate spells.

Hard range: minimum: [reference year] minus ([age] minus 10)  
(10 years old)

maximum: 31/12/[reference year]

Soft range: minimum: 01/01/[reference year]

maximum: 31/12/[reference year]

If Refuse/Don't know in day and/  
or month

set to 01

If Refuse/Don't know in year

go to DA\_E050

Otherwise

go to DA\_Q060

DA\_E050: A value must be entered in year. Go back and enter a value.

DA\_Q060: **Did he work for this employer before [year from DA\_Q045 or DA\_Q050]?**

**Did she work for this employer before [year from DA\_Q045 or DA\_Q050]?**

**Did you work for this employer before [year from DA\_Q045 or DA\_Q050]?**

1. Yes
2. No
8. Refuse
9. Don't know

If Yes go to DA\_Q065  
 If No/Refuse/Don't know go to DA\_Q085

?DA\_Q065: **When did he first start working for [employer]?**

**When did she first start working for [employer]?**

**When did you first start working for [employer]?**

INTERVIEWER: If exact year is not known, probe for best estimate.

Interviewer enters month/year

Hard range: minimum: [reference year] minus ([age] minus 10)  
 (10 yrs old)  
 maximum: answer in DA\_Q045/DA\_Q050

If Refuse/Don't know in month set to 01

go to DA\_Q085

DA\_Q070: **Did he return to work for [employer] in [reference year]?**

**Did she return to work for [employer] in [reference year]?**

**Did you return to work for [employer] in [reference year]?**

1. Yes
2. No
8. Refuse
9. Don't know

Yes go to DA\_Q075  
 No if job type = 2 and DA\_Q010 = Yes,  
 fill start date with 01/01/[Refyear]  
 and go to DA\_Q076;  
 otherwise, go to DA\_Q076  
 If Refuse/Don't know go to DA\_C120

DA\_Q075: **When did he return to work for [employer]?**

**When did she return to work for [employer]?**

**When did you return to work for [employer]?**

Interviewer enters day/month/year

Hard range: minimum: 01/01/[reference year]

maximum: 31/12/[reference year]

If Refuse/Don't know in day or month set to 01

If Refuse/Don't know in year go to DA\_E075

If Compinfo.prlflg59 = 1 go to DA\_C045

Otherwise go to DA\_Q085

DA\_E075: A value must be entered in year. Go back and enter a value.

DA\_Q076: **Does he expect to return to work for [employer]?**

**Does she expect to return to work for [employer]?**

**Do you expect to return to work for [employer]?**

1. Yes
2. No
8. Refuse
9. Don't know

If Yes go to DA\_C120 and set end date to 31/12/[reference year]

If No go to DA\_Q080

Otherwise go to DA\_C120

DA\_Q080: **When did he realize that he would not be returning to [employer]?**

**When did she realize that she would not be returning to [employer]?**

**When did you realize that you would not be returning to [employer]?**

Interviewer enters day/month/year

Hard range: minimum: 01/01/[reference year]

maximum: 31/12/[reference year]

If Refuse/Don't know in day or month      set to 01  
If Refuse/Don't know in year                  go to DA\_E080  
Otherwise    go to DA\_E081

DA\_E080: A value must be entered in year. Go back and enter a value.

DA\_E081: Respondent did not work for this employer in [reference year].  
Press 'D' to delete from the Employer Roster.

go to DA\_Q100

DA\_Q085: **Did he still have a job with [employer] at the beginning of  
[current year]?**

**Did she still have a job with [employer] at the beginning of  
[current year]?**

**Did you still have a job with [employer] at the beginning of  
[current year]?**

1. Yes
2. No
8. Refuse
9. Don't know

If Yes    go to DA\_C120 and set end  
date to 31/12/[reference year]

If No/Refuse/Don't know                  go to DA\_Q090

?DA\_Q090: **When did his job with [employer] end?**

**When did her job with [employer] end?**

**When did your job with [employer] end?**

Interviewer enters day/month/year

Hard range: minimum: if date in DA\_Q050 or date in DA\_Q045 <  
[reference year] set minimum to  
01/01/[reference year]  
otherwise, minimum = DA\_Q045 or  
DA\_Q050

maximum: 31/12/[reference year]

If date entered is < date in DA\_Q045 or DA\_Q050 the following message pops up: Date job ended is before date job started.

If (date entered is < 01/01/[reference year]) and (DA\_Q005 = Yes), the following hard edit message pops up: Confirm date. Date job ended cannot be before January 1, [reference year]. If date is correct, go back to DA\_Q005 and change response to "No".

If Refuse/Don't know in day	set to 01
If Refuse/Don't know in month or year	go to DA_N095
Otherwise	go to DA_Q095

If a valid date is entered in DA\_Q090 and DA\_Q085 = L,K,R, set start date in DA\_N120 to January 1, reference year.

DA\_N095: Check dates. Month and year when job ended is necessary to continue this interview. Probe for dates; if not available press 'D' to delete employer from Employer Roster.

go to DA\_C120

DA\_Q095: **Did he leave this job or did the job come to an end?**

**Did she leave this job or did the job come to an end?**

**Did you leave this job or did the job come to an end?**

1. Left job	go to DA_Q100
2. Job came to an end	go to DA_Q115
3. Both	go to DA_Q100
8. Refuse	go to DA_C120
9. Don't know	go to DA_C120

DA\_Q100: **What was his main reason for leaving this job?**

**What was her main reason for leaving this job?**

**What was your main reason for leaving this job?**

01. Own illness or disability
02. Caring for own children
03. Caring for elder relative(s)
04. Other personal or family responsibilities
05. School
06. Found new job

- 07. Moved to a new residence
- 08. Dissatisfied with job
- 09. Retirement
- 10. To concentrate on other job
- 11. Contract ended
- 12. Other (specify)
- 98. Refuse
- 99. Don't know

If answered "Own illness or disability" go to DA\_Q105  
 If answered "Dissatisfied with job" go to DA\_Q110  
 If answered "Other" go to DA\_S100  
 Otherwise go to DA\_C120

DA\_S100: INTERVIEWER: Specify

Maximum: 80 characters

go to DA\_C120

DA\_Q105: **Was this due to a work related illness or injury?**

- 1. Yes
- 2. No
- 8. Refuse
- 9. Don't know

go to DA\_C120

DA\_Q110: INTERVIEWER: If necessary ask:

**Can you be more specific about why he was not satisfied with this job?**

**Can you be more specific about why she was not satisfied with this job?**

**Can you be more specific about why you were not satisfied with this job?**

- 01. Poor pay
- 02. Not enough hours of work
- 03. Too many hours of work
- 04. Poor physical conditions (bad ventilation, too noisy, etc.)
- 05. Sexual harassment
- 06. Personal conflict with employer / other employees

- 07. Work too stressful
- 08. Other (specify)
- 98. Refuse
- 99. Don't know

If answered "Other"                    go to DA\_S110  
 Otherwise                                    go to DA\_C120

DA\_S110: INTERVIEWER: Specify

Maximum: 80 characters

go to DA\_C120

DA\_Q115: **What was the main reason why this job came to an end?**

- 01. Company moved
- 02. Company went out of business
- 03. Seasonal nature of work
- 04. Layoff / business slowdown (not caused by seasonal conditions)
- 05. Labour dispute
- 06. Dismissal by employer
- 07. Temporary job / contract ended
- 08. Other (specify)
- 98. Refuse
- 99. Don't know

If answered "Other"                    go to DA\_S115  
 Otherwise                                    go to DA\_C120

DA\_S115: INTERVIEWER: Specify

Maximum: 80 characters

go to DA\_C120

DA\_C120: If there is another job type 1  
 to be confirmed

go to DA\_Q005

If there is another job type 2  
 to be confirmed

go to DA\_Q010

If DA\_Q010 = Yes and DA\_Q070 = Refuse  
 or Don't know and there are no more  
 employers

go to SE\_C001

If 6 employers go to DA\_N120

Otherwise go to DA\_Q120

DA\_Q120: **Did he work for any other employers, including working for himself, in [reference year]?**

**Did she work for any other employers, including working for herself, in [reference year]?**

**Did you work for any other employers, including working for yourself, in [reference year]?**

1. Yes
2. No
8. Refuse
9. Don't know

If Yes go to DA\_Q040 and repeat for next employer

If No/Refuse/Don't know go to DA\_N120

DA\_N120: INTERVIEWER: Review the information. If changes are necessary use <PgUp> to go back. No further information is needed for deleted employers marked with an 'X'. Press <Enter> to continue.

Header: Employer Name Start Date End Date

If respondent did not work in [reference year] go to SE\_C001

If respondent worked in [reference year] go to CH\_C001

## 6.2 CH Module

CH\_C001: If DA\_Q076[employer] = Yes go to CH\_R001  
Otherwise if job type = 3, go to CH\_Q001;  
if job type = 1 or 2, go to CH\_Q005

Header: Employer name, start date and end date

CH\_R001: **You told us that [respondent] was absent from his job with [employer] for all of [reference year]. I would now like to ask**

you some questions about this absence.

**You told us that [respondent] was absent from her job with [employer] for all of [reference year]. I would now like to ask you some questions about this absence.**

**You told us that you were absent from your job with [employer] for all of [reference year]. I would now like to ask you some questions about this absence.**

INTERVIEWER: Press <Enter> to continue

If respondent denies being absent for all of [reference year], enter Don't know or Refuse

If response is <Enter> go to CH\_Q345

If response is Don't know or Refuse if more employers, go to CH\_C001; if no more employers, go to SE\_C001

?CH\_Q001: **I would like to ask you a few questions about [respondent's] work with [employer]. What kind of business, industry or service was this?** (e.g. federal government, canning industry, forestry services)

**I would like to ask you a few questions about your work with [employer]. What kind of business, industry or service was this?** (e.g. federal government, canning industry, forestry services)

Maximum: 50 characters

go to CH\_Q015

CH\_Q005: **I would like to ask you some questions about [respondent's] work with [employer]. Is this still the correct employer name?**

**I would like to ask you some questions about your work with [employer]. Is this still the correct employer name?**

1. Yes
2. No
8. Refuse
9. Don't know

If Yes/Refuse/Don't know If paid worker go to CH\_Q040;  
If self employed or working in a

family business without pay go to  
CH\_Q011

If No go to CH\_Q010

CH\_Q010: **What is the employer name?**

Maximum: 50 characters

If paid worker go to CH\_Q040

If self-employed or working in a  
family business without pay go to CH\_Q011

If Refuse/Don't know go to CH\_E010

CH\_E010: **If you don't know the name, can you give me a brief  
description of the employer?** (e.g. restaurant, hospital, etc.)

If paid worker go to CH\_Q040

If self-employed or working in a  
family business without pay go to CH\_Q011

?CH\_Q011: **Is he still [class of worker]?**

**Is she still [class of worker]?**

**Are you still [class of worker]?**

1. Yes (if Hhinfo.clwrk69 = 2, set SelfEmp to 1)
2. No
8. Refuse
9. Don't know

If confirmed and self employed, go to  
CH\_Q050;  
and not self employed, go to  
CH\_Q040

If No go to CH\_Q017

If Refuse/Don't know go to CH\_E015

?CH\_Q015: **In this job, was he . . .**

**In this job, was she . . .**

**In this job, were you . . .**

1. **A paid worker?**

2. **Self employed?** (set SelfEmp to 1)
3. **Working in a family business without pay?**
8. Refuse
9. Don't know

If Paid worker go to CH\_Q030  
 If Self employed go to CH\_Q020  
 If Working in a family business  
 without pay go to CH\_Q050  
 Refuse/Don't know go to CH\_E015

?CH\_Q017: **Is he ...**

**Is she ...**

**Are you ...**

1. **A paid worker?**
2. **Self employed?** (set SelfEmp to 1)
3. **Working in a family business without pay?**
8. Refuse
9. Don't know

If Paid worker go to CH\_Q030  
 If Self employed go to CH\_Q020  
 If Working in a family business  
 without pay go to CH\_Q050  
 Refuse/Don't know go to CH\_E015

CH\_E015: INTERVIEWER: Class of worker is required for question flow.  
 Go back to previous questions and enter the class of worker.

CH\_Q020: **Did he have an incorporated business?**

**Did she have an incorporated business?**

**Did you have an incorporated business?**

1. Yes
2. No
8. Refuse
9. Don't know

go to CH\_Q025

CH\_Q025: **Did he have any employees?**

**Did she have any employees?**

**Did you have any employees?**

- |    |            |               |
|----|------------|---------------|
| 1. | Yes        | go to CH_C040 |
| 2. | No         | go to CH_C040 |
| 8. | Refuse     | go to CH_Q050 |
| 9. | Don't know | go to CH_Q050 |

CH\_Q030: **How did he get his job with [employer]?**

**How did she get her job with [employer]?**

**How did you get your job with [employer]?**

01. Contacted employer directly
02. Friend or relative
03. Searched the Internet
04. Placed or answered newspaper ad
05. Employment agency (including Canada Employment Centres)
06. Referral from another employer
07. Contacted directly by employer
08. Union
09. Required for Social Assistance/Welfare-Workfare
10. Other (specify)
98. Refuse
99. Don't know

If answered "Other"	go to CH_S030
Otherwise	go to CH_C033

CH\_S030: **INTERVIEWER:** Specify

Maximum: 80 characters

go to CH\_C035

CH_C033:	If Compinfo.prlflg59 = 1	go to CH_C038
	If Compinfo.prlflg59 = 2	go to CH_C035

CH\_C035: If valid date in (DA\_Q045 or DA\_Q050) and year is < reference year, go to CH\_C040  
Otherwise, go to CH\_Q035

CH\_Q035: **When was he offered this job?**

**When was she offered this job?**

**When were you offered this job?**

Interviewer enters month/year

Hard range: minimum: [reference year] minus ([age] minus 10)  
(10 years old)

maximum: start date of job (DA\_Q045/\_Q050) or  
12/[reference year]

Edit text: Respondent cannot be offered  
the job after starting the job.

Soft range: minimum: 01/[reference year]

maximum: 12/[reference year]

go to CH\_C040

Soft edit for CH\_Q035:

If respondent gives minimum date prior to January 1 of [reference  
year] the following message will pop up:

CH\_E035: INTERVIEWER: Job was offered before [reference year]. Is this  
correct?

go to CH\_C040

CH\_C038: If date in (DA\_Q045 or DA\_Q050) and year is < reference year,  
go to CH\_C040

Otherwise, go to CH\_Q038

CH\_Q038: **When was he offered this job?**

**When was she offered this job?**

**When were you offered this job?**

Interviewer enters month/year

Hard range: minimum: [reference year] minus ([age] minus 10)  
(10 years old)

maximum: start date of job (DA\_Q045/Q050)  
or 12/[reference year]

go to CH\_C040

CH\_C040: If self employed go to CH\_Q050  
Otherwise go to CH\_Q040

?CH\_Q040: **[Is/Was] his job permanent, or is there some way that it [is/was] not permanent?** (e.g. seasonal, temporary, term, casual, etc.)

**[Is/Was] her job permanent, or is there some way that it [is/was] not permanent?** (e.g. seasonal, temporary, term, casual, etc.)

**[Is/Was] your job permanent, or is there some way that it [is/was] not permanent?** (e.g. seasonal, temporary, term, casual, etc.)

If DA\_Q085 = No, use the words "Was" and "was" in the question text. Otherwise, use the words "Is" and "is" in the question text.

1. Permanent
2. Not permanent
8. Refuse
9. Don't know

If Permanent/Refuse/Don't know go to CH\_Q050  
If Not permanent go to CH\_Q045

CH\_Q045: **In what way is his job not permanent?**

**In what way is her job not permanent?**

**In what way is your job not permanent?**

1. **Seasonal job**
2. **Temporary, term or contract job (non-seasonal)**
3. **Casual job**
4. **Work done through a temporary help agency**
5. Other (specify)
8. Refuse
9. Don't know

If answered "Other" go to CH\_S045  
Otherwise go to CH\_Q050

CH\_S045: INTERVIEWER: Specify

Maximum: 80 characters

go to CH\_Q050

?CH\_Q050: **How many persons were employed at the location where he worked for [employer]? Was it . . .**

**How many persons were employed at the location where she worked for [employer]? Was it . . .**

**How many persons were employed at the location where you worked for [employer]? Was it . . .**

1. **Less than 20**
2. **20 to 99**
3. **100 to 499**
4. **500 to 999**
5. **1000 and over**
8. Refuse
9. Don't know

go to CH\_Q055

?CH\_Q055: **Did this employer operate at more than one location?**

1. Yes
2. No
8. Refuse
9. Don't know

Yes

if CH\_Q050 = 5 and job type = 1 or 2, go to CH\_Q065;  
if CH\_Q050 = 5 and job type = 3, go to CH\_Q080;  
otherwise, go to CH\_Q060

No/Refuse/Don't know

if job type = 1 or 2, go to CH\_Q065;  
if job type = 3, go to CH\_Q080

?CH\_Q060: **In total, about how many persons were employed at all these locations?**

INTERVIEWER: Probe for an estimate



?CH\_Q075: **What were his most important activities or duties in January [reference year]?** (e.g. filing documents, drying vegetables, forest examiner)

**What were her most important activities or duties in January [reference year]?** (e.g. filing documents, drying vegetables, forest examiner)

**What were your most important activities or duties in January [reference year]?** (e.g. filing documents, drying vegetables, forest examiner)

Maximum: 50 characters

Go to CH\_Q090

?CH\_Q080: **What kind of work was he doing with [employer]?** (e.g. office clerk, factory worker, forestry technician)

**What kind of work was she doing with [employer]?** (e.g. office clerk, factory worker, forestry technician)

**What kind of work were you doing with [employer]?** (e.g. office clerk, factory worker, forestry technician)

Maximum: 50 characters

go to CH\_Q085

?CH\_Q085: **What were his most important activities or duties?** (e.g. filing documents, drying vegetables, forest examiner)

**What were her most important activities or duties?** (e.g. filing documents, drying vegetables, forest examiner)

**What were your most important activities or duties?** (e.g. filing documents, drying vegetables, forest examine)

Maximum: 50 characters

go to CH\_Q102

Header for CH\_Q090, CH\_Q095, CH\_Q100 and CH\_Q102: type of work

CH\_Q090: **Did the kind of work he was doing with [employer] change during [reference year]?**

**Did the kind of work she was doing with [employer] change during [reference year]?**

**Did the kind of work you were doing with [employer] change during [reference year]?**

1. Yes go to CH\_Q095
2. No go to CH\_Q102
8. Refuse go to CH\_Q102
9. Don't know go to CH\_Q102

?CH\_Q095: **What kind of work was he doing [when this job ended] [at the end of reference year]?** (e.g. office clerk, factory worker, forestry technician)

**What kind of work was she doing [when this job ended] [at the end of reference year]?** (e.g. office clerk, factory worker, forestry technician)

**What kind of work were you doing [when this job ended] [at the end of reference year]?** (e.g. office clerk, factory worker, forestry technician)

Maximum: 50 characters

go to CH\_Q100

?CH\_Q100: **What were his most important activities or duties [when this job ended] [at the end of reference year]?** (e.g. filing documents, drying vegetables, forest examiner)

**What were her most important activities or duties [when this job ended] [at the end of reference year]?** (e.g. filing documents, drying vegetables, forest examiner)

**What were your most important activities or duties [when this job ended] [at the end of reference year]?** (e.g. filing documents, drying vegetables, forest examiner)

Maximum: 50 characters

go to CH\_Q102

CH\_Q102: **How closely was this job related to [his] education?**

**How closely was this job related to [her] education?**

**How closely was this job related to [your] education?**

1. **Closely related**
2. **Somewhat related**
3. **Not related at all**
8. Refuse
9. Don't know

go to CH\_Q105

Header: employer name, start date and end date

?CH\_Q105: **In the past year at this job, as part of his duties, did he supervise the work of other employees on a day-to-day basis?**

**In the past year at this job, as part of her duties, did she supervise the work of other employees on a day-to-day basis?**

**In the past year at this job, as part of your duties, did you supervise the work of other employees on a day-to-day basis?**

1. Yes
2. No
8. Refuse
9. Don't know

If Yes go to CH\_Q110

If No/Refuse/Don't know  
and paid worker go to CH\_Q125

Otherwise go to CH\_Q150

CH\_Q110: **About how many people did he supervise directly?**

**About how many people did she supervise directly?**

**About how many people did you supervise directly?**

INTERVIEWER: Probe for an estimate

Hard range: minimum: 1  
maximum: 995

Soft range: > 60

go to CH\_Q115

?CH\_Q115: **Did he have an influence on whether a person he supervised received a pay raise or promotion?**

**Did she have an influence on whether a person she supervised received a pay raise or promotion?**

**Did you have an influence on whether a person you supervised received a pay raise or promotion?**

1. Yes
2. No
8. Refuse
9. Don't know

go to CH\_Q120

?CH\_Q120: **Was he directly responsible for deciding the work to be done by the people he supervised?**

**Was she directly responsible for deciding the work to be done by the people she supervised?**

**Were you directly responsible for deciding the work to be done by the people you supervised?**

1. Yes
2. No
8. Refuse
9. Don't know

If paid worker go to CH\_Q125

Otherwise go to CH\_Q150

?CH\_Q125: **In the past year at this job, did he make decisions about budgets or staffing?**

**In the past year at this job, did she make decisions about budgets or staffing?**

**In the past year at this job, did you make decisions about budgets or staffing?**

1. Yes
2. No
8. Refuse
9. Don't know

go to CH\_Q130

?CH\_Q130: **Was his work with [employer] managerial?**

**Was her work with [employer] managerial?**

**Was your work with [employer] managerial?**

1. Yes
2. No
8. Refuse
9. Don't know

If Yes

go to CH\_Q135

If No/Refuse/Don't know

go to CH\_Q140

?CH\_Q135: **Would his work be best described as top, upper, middle or lower management?**

**Would her work be best described as top, upper, middle or lower management?**

**Would your work be best described as top, upper, middle or lower management?**

1. Top management
2. Upper management
3. Middle management
4. Lower management
8. Refuse
9. Don't know

go to CH\_Q140

?CH\_Q140: **Which of the following best describes his work schedule with [employer] [when this job ended] [at the end of reference year]? Please listen to all of the following choices before responding.**

**Which of the following best describes her work schedule with [employer] [when this job ended] [at the end of reference**

year]? Please listen to all of the following choices before responding.

Which of the following best describes your work schedule with [employer] [when this job ended] [at the end of reference year]? Please listen to all of the following choices before responding.

01. A regular daytime schedule go to CH\_Q150
02. A regular evening shift go to CH\_Q150
03. A regular night or graveyard shift go to CH\_Q150
04. A rotating shift (changes from days to evenings to nights) go to CH\_Q150
05. A split shift (two distinct periods each day) go to CH\_Q150
06. On call go to CH\_Q145
07. An irregular schedule go to CH\_Q145
08. Other (specify) go to CH\_S140
98. Refuse go to CH\_Q150
99. Don't know go to CH\_Q150

CH\_S140: INTERVIEWER: Specify

Maximum: 80 characters

go to CH\_Q150

CH\_Q145: **What was the main reason that he worked this schedule?**

**What was the main reason that she worked this schedule?**

**What was the main reason that you worked this schedule?**

01. Own illness or disability
02. Caring for own children
03. Caring for elder relatives(s)
04. Other personal or family responsibilities
05. Going to school
06. Could only find this type of work
07. Did not want a regular schedule
08. Requirement of the job/no choice
09. Earn more money
10. Other (specify)
98. Refuse
99. Don't know

If answered "Other"            go to CH\_S145  
Otherwise                        go to CH\_Q150

CH\_S145: INTERVIEWER: Specify

Maximum: 80 characters

go to CH\_Q150

?CH\_Q150: **At this job, did he usually work every week of the month?**

**At this job, did she usually work every week of the month?**

**At this job, did you usually work every week of the month?**

INTERVIEWER: Enter 'Yes' if the respondent worked at least one hour every week of the month.

1. Yes
2. No
8. Refuse
9. Don't know

If Yes/Refuse/Don't know

If paid worker, go to  
CH\_Q160;  
If self employed or working  
in a family business without  
pay, go to CH\_Q165

If No

go to CH\_Q155

?CH\_Q155: **At this job, how many weeks did he usually work each month?**

**At this job, how many weeks did she usually work each month?**

**At this job, how many weeks did you usually work each month?**

INTERVIEWER: Enter the usual number of weeks in which the respondent worked one or more hours at this job.

Hard range:    minimum: 1  
                      maximum: 3

If paid worker go to CH\_Q160  
If self employed or working in  
a family business without pay go to CH\_Q165

?CH\_Q160: **At this job, excluding overtime, how many hours per week did he usually get paid?**

**At this job, excluding overtime, how many hours per week did she usually get paid?**

**At this job, excluding overtime, how many hours per week did you usually get paid?**

INTERVIEWER: If the hours/week vary, ask for the average over the last 4 weeks worked

Hard range: minimum: 1.00  
maximum: 168.00

Soft range: < 5 and > 60

If total is < than 30 hours go to CH\_Q169

If total is > than 29 hours/Refuse/  
Don't know go to CH\_Q175

?CH\_Q165: **At this job, how many hours per week did he usually work?**

**At this job, how many hours per week did she usually work?**

**At this job, how many hours per week did you usually work?**

INTERVIEWER: If the hours/week vary, ask for the average over the last 4 weeks worked

Hard range: minimum: 1.00  
maximum: 168.00

Soft range: < 5 and > 60

If total is < than 30 hours go to CH\_Q169

If total is > than 29 hours/Refuse/  
Don't know go to CH\_Q175

Soft edit on CH\_Q165: Answer seems unusual. Are you sure it's correct?

CH\_Q169: **Did he want to work 30 or more hours per week at this job?**

**Did she want to work 30 or more hours per week at this job?**

**Did you want to work 30 or more hours per week at this job?**

1. Yes
2. No
8. Refuse
9. Don't know

go to CH\_Q170

?CH\_Q170: **At this job, what was the main reason he usually worked less than 30 hours per week?**

**At this job, what was the main reason she usually worked less than 30 hours per week?**

**At this job, what was the main reason you usually worked less than 30 hours per week?**

01. Own illness or disability
02. Caring for own children
03. Caring for elder relative(s)
04. Other personal or family responsibilities
05. Going to school
06. Could not find work with 30 or more hours
07. Personal preference
08. Full-time work under 30 hours per week (nature of the job)
09. Business conditions
10. Semi-retired or pre-retired
11. Other (specify)
98. Refuse
99. Don't know

If answered "Other" go to CH\_S170

Otherwise go to CH\_Q175

CH\_S170: INTERVIEWER: Specify

Maximum: 80 characters

go to CH\_Q175

?CH\_Q175: **At this job, did he regularly work any of his scheduled hours at home?**

**At this job, did she regularly work any of her scheduled hours at home?**

**At this job, did you regularly work any of your scheduled hours at home?**

1. Yes
2. No
8. Refuse
9. Don't know

Yes go to CH\_Q180

No If self employed or working in a family business without pay go to CH\_Q210;  
If a paid worker and CH\_Q140 = 06 "On call", go to CH\_Q210;  
If a paid worker and CH\_Q140 = 07 "Irregular schedule", go to CH\_Q251;  
Otherwise, go to CH\_Q185

Refuse/Don't know go to CH\_Q185

CH\_Q180: **How many hours per week did he usually work at home?**

**How many hours per week did she usually work at home?**

**How many hours per week did you usually work at home?**

Hard range: minimum: 1.00  
maximum: 168.00

Soft range: > 60

If self employed or working in a family business without pay go to CH\_Q210

If a paid worker and CH\_Q140 = 06 "On call" go to CH\_Q210

If a paid worker and CH\_Q140 = 07 "Irregular schedule" go to CH\_Q251

Refuse/Don't know go to CH\_Q185

Otherwise go to CH\_Q185

CH\_Q185: **Did the number of hours usually worked per week for this employer change in [reference year]?**

1. Yes
2. No
8. Refuse
9. Don't know

If Yes go to CH\_Q190

If No/Refuse/Don't know and:

If paid worker and same employer as last year [DA\_Q005 = Yes or DA\_Q010 = Yes OR (DA\_Q010 = No and DA\_Q025 = Yes)] and Compinfo.oldwge69 and Compinfo.oldwgu69 > 0 go to CH\_C240

If paid worker and same employer as last year [DA\_Q005 = Yes or DA\_Q010 = Yes OR (DA\_Q010 = No and DA\_Q025 = Yes)] and Compinfo.oldwge69 and Compinfo.oldwgu69 = 0 go to CH\_Q245

Otherwise go to CH\_Q251

CH\_Q190: **In what month was this?**

INTERVIEW WEEK: If the number of hours changed more than once, select month of last change.

If months not equal to dates worked go to CH\_E190  
Otherwise go to CH\_Q195

CH\_E190: Check dates. Month in which hours changed is not within start and end dates of job.

go to CH\_Q195

CH\_Q195: **Before this change, did he usually work every week of the month?**

**Before this change, did she usually work every week of the month?**

**Before this change, did you usually work every week of the month?**

1. Yes
2. No
8. Refuse
9. Don't know

If Yes go to CH\_Q205  
 Otherwise go to CH\_Q200

CH\_Q200: **How many weeks did he usually work per month?** (before this change)

**How many weeks did she usually work per month?** (before this change)

**How many weeks did you usually work per month?** (before this change)

INTERVIEWER: Probe for an estimate

Hard range: minimum: 1  
 maximum: 3

go to CH\_Q205

?CH\_Q205: **Excluding overtime, how many hours per week did he usually get paid?** (before this change)

**Excluding overtime, how many hours per week did she usually get paid?** (before this change)

**Excluding overtime, how many hours per week did you usually get paid?** (before this change)

INTERVIEWER: Probe for an estimate

Hard range: minimum: 1.00  
 maximum: 168.00

Soft range: < 5 and > 60

If paid worker and same employer as last year

[DA\_Q005 = Yes or DA\_Q010 = Yes OR  
 (DA\_Q010 = No and DA\_Q025 = Yes)]

and Compinfo.oldwge69 and

Compinfo.oldwgu69 > 0

go to CH\_C240

If paid worker and same employer as last year  
[DA\_Q005 = Yes or DA\_Q010 = Yes OR  
(DA\_Q010 = No and DA\_Q025 = Yes)] and  
Compinfo.oldwge69 and  
Compinfo.oldwgu69 = 0 go to CH\_Q245

Otherwise go to CH\_Q251

CH\_Q210: **Last year, when did he work for [employer]?**

**Last year, when did she work for [employer]?**

**Last year, when did you work for [employer]?**

1. **All months of the year**

Edit on all months of the year:  
To select this answer, respondent must have worked from  
01/01/[reference year] to 31/12/[reference year];  
otherwise go to CH\_E210

If paid worker and not the same employer  
as last year [DA\_Q005 = No OR  
(DA\_Q010 = No and DA\_Q025 = No/DK/R)  
OR job type = 3] go to CH\_Q251

If paid worker and same employer as  
last year [DA\_Q005 = Yes or  
DA\_Q010 = Yes OR (DA\_Q010 = No  
and DA\_Q025 = Yes)] and  
Compinfo.oldwge69 and  
Compinfo.oldwgu69 > 0 go to CH\_C240

If paid worker and same employer as  
last year [DA\_Q005 = Yes or  
DA\_Q010 = Yes OR (DA\_Q010 = No  
and DA\_Q025 = Yes)] and  
Compinfo.oldwge69 = \$0.00 and  
Compinfo.oldwgu69 = 0 go to CH\_Q245

Otherwise if more employers, go to CH\_C001;  
if no more employers, go to  
SE\_C001

2. **Some of the months** go to CH\_Q215

3. **None of the months** if more employers, go to CH\_C001  
if no more employers, go to SE\_C001

8./9. Refuse/Don't know

If paid worker and not the same employer as last year [DA\_Q005 = No OR (DA\_Q010 = No and DA\_Q025 = No/DK/R) OR job type = 3] go to CH\_Q251

If paid worker and same employer as last year [DA\_Q005 = Yes or DA\_Q010 = Yes OR (DA\_Q010 = No and DA\_Q025 = Yes)] and Compinfo.oldwge69 and Compinfo.oldwgu69 > 0 go to CH\_C240

If paid worker and same employer as last year [DA\_Q005 = Yes or DA\_Q010 = Yes OR (DA\_Q010 = No and DA\_Q025 = Yes)] and Compinfo.oldwge69 = \$0.00 and Compinfo.oldwgu69 = 0 go to CH\_Q245

Otherwise: if more employers, go to CH\_C001;  
if no more employers, go to SE\_C001

CH\_E210: Dates worked for this employer are [start date] and [end date], therefore you cannot select 'All months of the year'.

CH\_Q215: **In which months did he work for [employer]?**

**In which months did she work for [employer]?**

**In which months did you work for [employer]?**

INTERVIEWER: Select all months that apply

- |              |               |
|--------------|---------------|
| 01. January  | 07. July      |
| 02. February | 08. August    |
| 03. March    | 09. September |
| 04. April    | 10. October   |

- |            |                |
|------------|----------------|
| 05. May    | 11. November   |
| 06. June   | 12. December   |
| 98. Refuse | 99. Don't know |

If paid worker and not the same employer as last year [DA\_Q005 = No OR (DA\_Q010 = No and DA\_Q025 = No/DK/R) OR Job type = 3] go to CH\_Q251

If paid worker and a new employer reported go to CH\_Q251

If paid worker and same employer as last year [DA\_Q005 = Yes or DA\_Q010 = Yes OR (DA\_Q010 = No and DA\_Q025 = Yes)] and Compinfo.oldwge69 and Compinfo.oldwgu69 > 0 go to CH\_C240

If paid worker and same employer as last year [DA\_Q005 = Yes or DA\_Q010 = Yes OR (DA\_Q010 = No and DA\_Q025 = Yes)] and Compinfo.oldwge69 and Compinfo.oldwgu69 = 0 go to CH\_Q245

Otherwise if more employers, go to CH\_C001  
if no more employers, go to SE\_C001

Edit: Must be within dates worked for this employer;  
If dates inconsistent with job dates go to CH\_E215

CH\_E215: Check dates. Months specified are not within start and end dates of job.

CH\_C240: If PersonProxy = Proxy go to CH\_Q251  
If PersonProxy = NonProxy go to CH\_Q240

CH\_Q240. **Based on our interview of a year ago, your wage at this job in [reference year – 1] was \$ [prefill from Compinfo.oldwge69 and Compinfo.oldwgu69]. Is this correct?**

- |               |                                     |
|---------------|-------------------------------------|
| 1. Yes        | set WageFlag to 1 and go to CH_Q248 |
| 2. No         | set WageFlag to 1 and go to CH_Q245 |
| 8. Refuse     | go to CH_Q255                       |
| 9. Don't know | go to CH_Q255                       |

?CH\_Q245: **What was his wage at this job [at the beginning/in [month]] of [reference year]? This includes tips and commissions but not paid overtime.**

**What was her wage at this job [at the beginning/in [month]] of [reference year]? This includes tips and commissions but not paid overtime.**

**What was your wage at this job [at the beginning/in [month]] of [reference year]? This includes tips and commissions but not paid overtime.**

INTERVIEWER: If response is "minimum wage" press F1 and choose appropriate wage for province of work from chart. If wage is greater than \$999,995.00, enter 999,995.00

Hard range: minimum: \$ 0.01  
maximum: \$ 999,995.00

Soft range: > \$99,995

Refuse/Don't know go to CH\_Q248  
Otherwise go to CH\_Q246

CH\_Q246: **Is this wage . . .**

01. **Hourly?**
02. **Daily?**
03. **Weekly?**
04. **Bi-weekly?**
05. **Semi-monthly?**
06. **Monthly?**
07. **Yearly?**
08. Other (specify)
98. Refuse
99. Don't know

If answered "Other" go to CH\_S246  
Otherwise go to CH\_Q248

CH\_S246: INTERVIEWER: Specify

Maximum: 80 characters

go to CH\_Q255

CH\_Q248: **Did his wage at this job change during [reference year]?**

**Did her wage at this job change during [reference year]?**

**Did your wage at this job change during [reference year]?**

1. Yes
2. No
8. Refuse
9. Don't know

If Yes go to CH\_Q249  
If No and compinfo.oldwgu69 = 02 "daily" go to CH\_Q255  
Otherwise go to CH\_Q254

CH\_Q249: **In which month did this wage change occur:**

INTERVIEWER: Select month. If more than one wage change, select month of last change. If respondent is unsure of the month, probe for an estimate.

- |              |                |
|--------------|----------------|
| 01. January  | 08. August     |
| 02. February | 09. September  |
| 03. March    | 10. October    |
| 04. April    | 11. November   |
| 05. May      | 12. December   |
| 06. June     | 98. Refuse     |
| 07. July     | 99. Don't know |

go to CH\_Q251

?CH\_Q251: **What was his wage or salary, before taxes and deductions, [when this job ended] [at the end of [reference year]]? This includes tips and commissions but not paid overtime.**

**What was her wage or salary, before taxes and deductions, [when this job ended] [at the end of [reference year]]? This includes tips and commissions but not paid overtime.**

**What was your wage or salary, before taxes and deductions, [when this job ended] [at the end of [reference year]]? This includes tips and commissions but not paid overtime.**

INTERVIEWER: If response is "minimum wage" press F1 and choose appropriate wage for province of work

from chart. If wage or salary is greater than \$999,995.00, enter \$999,995.00

If DA\_Q085 = No/DK/R, prefill the question text with 'when this job ended'.

Otherwise, prefill with 'at the end of [reference year]'.

Hard range: minimum: \$ 0.01  
maximum: \$ 999995.00

Refuse/Don't know go to CH\_Q260

Otherwise go to CH\_Q252

CH\_Q252: **Is this wage ...**

01. **Hourly ?**
02. **Daily ?**
03. **Weekly ?**
04. **Bi-weekly ?**
05. **Semi-monthly ?**
06. **Monthly ?**
07. **Yearly ?**
08. Other (specify)
98. Refuse
99. Don't know

If Hourly and CH\_Q251 < \$5 go to CH\_E252

If Hourly and CH\_Q251 > \$500 go to CH\_E252

If Daily and CH\_Q251 > \$4,000 go to CH\_E252

If Weekly and CH\_Q251 > \$20,000 go to CH\_E252

If Bi-weekly and CH\_Q251 > \$40,000 go to CH\_E252

If Semi-monthly and CH\_Q251 > \$40,000 go to CH\_E252

If Monthly and CH\_Q251 > \$50,000 go to CH\_E252

If Yearly and CH\_Q251 > \$600,000 go to CH\_E252

If answered "Other" set WageFlag to 1 and go to CH\_S252

Refuse/Don't know go to CH\_Q254

Otherwise (01 – 07) set WageFlag to 1 and go to CH\_Q254

CH\_S252: INTERVIEWER: Specify

Maximum: 80 characters

go to CH\_Q255

CH\_E252: **So his [prefill of answer from CH\_Q252] wage or salary, before taxes and deductions, was [prefill of answer from CH\_Q251]. Is that correct?**

**So her [prefill of answer from CH\_Q252] wage or salary, before taxes and deductions, was [prefill of answer from CH\_Q251]. Is that correct?**

**So your [prefill of answer from CH\_Q252] wage or salary, before taxes and deductions, was [prefill of answer from CH\_Q251]. Is that correct?**

If No, return to CH\_Q251 or CH\_Q252 and change response  
If Yes, go to CH\_Q254

CH\_Q254: **Does he usually receive tips or commissions.**

**Does she usually receive tips or commissions?**

**Do you usually receive tips or commissions?**

1. Yes
2. No
8. Refuse
9. Don't know

If CH\_Q252 = 02 "Daily" go to CH\_Q255  
Otherwise go to CH\_Q260

CH\_Q255: **What were his total earnings from this job in [reference year]?**

**What were her total earnings from this job in [reference year]?**

**What were your total earnings from this job in [reference year]?**

INTERVIEWER: If earnings are greater than \$999,995.00 enter \$999,995.00

Hard range: minimum: \$ 0.01  
maximum: \$ 999995.00

Soft range: > \$99,995

go to CH\_Q260

?CH\_Q260: **In this job, was he a union member?**

**In this job, was she a union member?**

**In this job, were you a union member?**

1. Yes (set UniMem to 1)
2. No
8. Refuse
9. Don't know

If Yes go to CH\_Q270  
Otherwise go to CH\_Q265

?CH\_Q265: **Was he covered by a union contract or collective agreement?**

**Was she covered by a union contract or collective agreement?**

**Were you covered by a union contract or collective agreement?**

1. Yes (set UniMem to 1)
2. No
8. Refuse
9. Don't know

go to CH\_Q270

?CH\_Q270: **I would now like to ask you about job benefits that some employers offer. In his job with [employer], did he have an employer pension plan?**

**I would now like to ask you about job benefits that some employers offer. In her job with [employer], did she have an employer pension plan?**

**I would now like to ask you about job benefits that some employers offer. In your job with [employer], did you have an employer pension plan?**

INTERVIEWER: Also called a Registered Pension Plan. Exclude CPP or QPP (Canada/Quebec Pension Plan).

1. Yes
2. No
8. Refuse

9. Don't know

If Yes go to CH\_Q271

Otherwise go to CH\_Q272

CH\_Q271: **Did he contribute to this pension plan, for example, through pay deductions?**

**Did she contribute to this pension plan, for example, through pay deductions?**

**Did you contribute to this pension plan, for example, through pay deductions?**

1. Yes (set PenPlan to 1)

2. No

8. Refuse

9. Don't know

go to CH\_Q272

?CH\_Q272: **In this job, did he contribute, through payroll deductions, to a registered retirement savings plan, also called a group RRSP?**

**In this job, did she contribute, through payroll deductions, to a registered retirement savings plan, also called a group RRSP?**

**In this job, did you contribute, through payroll deductions, to a registered retirement savings plan, also called a group RRSP?**

1. Yes

2. No

8. Refuse

9. Don't know

If Yes go to CH\_Q273

Otherwise go to CH\_Q275

?CH\_Q273: **Did his employer contribute to this group RRSP?**

**Did her employer contribute to this group RRSP?**

**Did your employer contribute to this group RRSP?**

1. Yes

2. No

- 8. Refuse
- 9. Don't know

go to CH\_Q275

CH\_Q275: **In this job, did his employer offer him any of the following benefits even if he chose not to take them?**

**In this job, did her employer offer her any of the following benefits even if she chose not to take them?**

**In this job, did your employer offer you any of the following benefits even if you chose not to take them?**

INTERVIEWER: Mark all that apply

- 1. **Medical insurance or health plan in addition to public health insurance coverage**
- 2. **Dental plan or dental coverage with the health plan**
- 3. **Life and/or disability insurance plan**
- 4. None of the above
- 8. Refuse
- 9. Don't know

go to CH\_Q277

CH\_Q277: **Did his employer give him the option of a:**

**Did her employer give her the option of a:**

**Did your employer give you the option of a:**

INTERVIEWER: Mark all that apply

- 1. **Low-interest loan**
- 2. **Profit sharing plan**
- 3. **Stock purchase or Stock option plan**
- 4. None of the above
- 8. Refuse
- 9. Don't know

go to CH\_Q279

?CH\_Q279: **In this job, were there other important benefits available to him as an employee?**

**In this job, were there other important benefits available to her as an employee?**

**In this job, were there other important benefits available to you as an employee?**

1. Yes (specify)
2. No
8. Refuse
9. Don't know

If Yes go to CH\_S279  
Otherwise go to CH\_C280

CH\_S279: INTERVIEWER: Specify

Maximum: 80 characters

go to CH\_C280

CH\_C280: If job type = 1 or 3 go to CH\_Q280  
If job type = 2 go to CH\_Q285

On call workers: if more employers, go to CH\_C001 ;  
if no more employers, go to SE\_C001

?CH\_Q280: **Not counting fully paid vacation, was he absent from this job for a period of one week or longer, during [refyear]?**

**Not counting fully paid vacation, was she absent from this job for a period of one week or longer, during [refyear]?**

**Not counting fully paid vacation, were you absent from this job for a period of one week or longer, during [refyear]?**

INTERVIEWER: An absence is a period of at least five (5) consecutive days during which the respondent was away from the job, but expected to return to the job. Examples of absences are: temporary lay-offs (seasonal or economic), strikes, maternity or paternity leave, paid or unpaid sick leave and unpaid educational leave.

1. Yes
2. No

- 8. Refuse
- 9. Don't know

If yes go to CH\_Q320  
 Otherwise if more employers, go to CH\_C001;  
 if no more employers go to SE\_C001

CH\_Q285: **Before returning to work for [employer] did he receive any pay from this employer?**

**Before returning to work for [employer] did she receive any pay from this employer?**

**Before returning to work for [employer] did you receive any pay from this employer?**

- 1. Yes
- 2. No
- 8. Refuse
- 9. Don't know

If Yes go to CH\_Q290  
 Otherwise go to CH\_C290

CH\_Q290: **Was that full or partial pay?**

- 1. Full pay
- 2. Partial pay
- 8. Refuse
- 9. Don't know

go to CH\_C290

CH\_C290: If Compinfo.absrsn69 = 09 go to CH\_Q295  
 (reason for absence is seasonal layoff )  
 Otherwise go to CH\_Q305

?CH\_Q295: **In [reference year], did he look for another job before returning to work?**

**In [reference year], did she look for another job before returning to work?**

**In [reference year], did you look for another job before returning to work?**

1. Yes
2. No
8. Refuse
9. Don't know

If Yes                                go to CH\_Q300  
 Otherwise                            go to CH\_Q305

?CH\_Q300: **In which months did he look for another job?**

**In which months did she look for another job?**

**In which months did you look for another job?**

INTERVIEWER: Mark all that apply.

- |              |                |
|--------------|----------------|
| 01. January  | 07. July       |
| 02. February | 08. August     |
| 03. March    | 09. September  |
| 04. April    | 10. October    |
| 05. May      | 11. November   |
| 06. June     | 12. December   |
| 98. Refuse   | 99. Don't know |

Edit: Months should be within start date of job and return date in DA\_Q075.  
 If not go to CH\_E300  
 Otherwise go to CH\_Q305

CH\_E300: Check dates. Months in CH\_Q300 should be before date returned to work in DA\_Q075

Start: date of absence                                End: date of absence

CH\_Q305: **After returning to work for [employer], was he absent from this job for a period of one week or longer, not counting fully paid vacations?**

**After returning to work for [employer], was she absent from this job for a period of one week or longer, not counting fully paid vacations?**

**After returning to work for [employer], were you absent from this job for a period of one week or longer, not counting fully paid vacations?**

1. Yes
2. No
8. Refuse
9. Don't know

If Yes go to CH\_Q310  
 If No/Refuse/Don't know and more employers go to CH\_C001  
 If no more employers go to SE\_C001

CH\_Q310: **How many times was he absent after returning to work on [return date from DA\_Q075]?**

**How many times was she absent after returning to work on [return date from DA\_Q075]?**

**How many times were you absent after returning to work on [return date from DA\_Q075]?**

Hard range: minimum: 1  
 maximum: 52

Soft range: = 1 and > 20

If only once (make [last] = blank) go to CH\_Q375  
 If more than once (make [last] = last) go to CH\_Q375  
 Refuse/Don't know go to CH\_Q315

CH\_Q315: **Would you say it was more than once?**

1. Yes (make [last] = last)
2. No (make [last] = blank)
8. Refuse
9. Don't know

If Yes/No go to CH\_Q375  
 If Refuse/Don't know and more employers go to CH\_C001  
 If no more employers go to SE\_C001

CH\_Q320: **How many times was he absent?**

**How many times was she absent?**

**How many times were you absent?**

Hard range: minimum: 1  
maximum: 52

Soft range: > 20

If only once (make [first] = blank) go to CH\_Q330  
Otherwise ([first] = first and [last] = last) go to CH\_Q330  
If Refuse and more employers go to CH\_C001  
If Refuse and no more employers go to SE\_C001  
If Don't know go to CH\_Q325

CH\_Q325: **Would you say it was more than once?**

1. Yes (make [first] = first, [last] = last)
2. No (make [first] = blank)
8. Refuse
9. Don't know

If Yes/No go to CH\_Q330  
If Refuse/Don't know and more employers, go to CH\_C001;  
and no more employers, go to SE\_C001

CH\_Q330: **When did his [first] absence begin?**

**When did her [first] absence begin?**

**When did your [first] absence begin?**

INTERVIEWER: If date absence started is before January 1,  
[reference year], enter 01/01/[reference year].

Hard range: must be within dates worked for this employer

Interviewer enters day/month/year go to CH\_Q335  
Refuse/Don't know go to CH\_Q335

If a year < reference year is entered the following hard edit will  
pop: "If date absence started is before January 1, [reference year],  
enter 01/01/[reference year]."

If a year > reference year is entered the following hard edit will  
pop: "Date absence started must be within dates worked for this  
employer in [reference year]."

CH\_Q335: **When did this absence end?**



- 04. Caring for own children
- 05. Caring for elder relative(s)
- 06. Other personal or family responsibilities
- 07. School or educational leave
- 08. Labour dispute (strike or lockout)
- 09. Seasonal layoff
- 10. Temporary layoff due to business conditions
- 11. Unpaid or partially paid vacation
- 12. Other (specify)
- 98. Refuse
- 99. Don't know

If answered "Own illness or disability" go to CH\_Q350  
 If answered "Other" go to CH\_S345  
 Otherwise go to CH\_Q355

CH\_S345: INTERVIEWER: Specify

Maximum: 80 characters

go to CH\_Q355

?CH\_Q350: **Was this due to a work related illness or injury?**

- 1. Yes
- 2. No
- 8. Refuse
- 9. Don't know

If DA\_Q076 = Yes go to CH\_Q357  
 Otherwise go to CH\_Q355

CH\_Q355: **Did he receive any pay from [employer] for this absence?**

**Did she receive any pay from [employer] for this absence?**

**Did you receive any pay from [employer] for this absence?**

- 1. Yes
- 2. No
- 8. Refuse
- 9. Don't know

If Yes go to CH\_Q360

If No/Refuse/Don't know

if CH\_Q345 = 09 "seasonal  
layoff" go to CH\_Q365;  
if more than one absence, go  
to CH\_Q375;  
if one absence and more  
employers, go to CH\_C001;  
if no more employers, go to  
SE\_C001

CH\_Q357: **Did he receive any pay from [employer] for this absence during [reference year]?**

**Did she receive any pay from [employer] for this absence during [reference year]?**

**Did you receive any pay from [employer] for this absence during [reference year]?**

1. Yes
2. No
8. Refuse
9. Don't know

If Yes go to CH\_Q360  
Otherwise go to CH\_Q365

CH\_Q360: **Was that full or partial pay?**

1. Full pay
2. Partial pay
8. Refuse
9. Don't know

If CH\_Q345 = 09 "seasonal layoff" go to CH\_Q365  
If more than one absence go to CH\_Q375  
If one absence and more employers go to CH\_C001  
If no more employers go to SE\_C001

?CH\_Q365: **Did he look for another job during this absence?**

**Did she look for another job during this absence?**

**Did you look for another job during this absence?**

1. Yes
2. No

- 8. Refuse
- 9. Don't know

If Yes, and absence start and end dates complete, go to CH\_Q370; absence start and end dates not complete and more employers go to CH\_C001; no more employers go to SE\_C001

If No/Refuse/Don't know, and more than one absence go to CH\_Q375; one absence and more employers go to CH\_C001; no more employers go to SE\_C001

?CH\_Q370: **In which months did he look for another job?**

**In which months did she look for another job?**

**In which months did you look for another job?**

INTERVIEWER: Mark all that apply. Months marked should be within dates shown below.

Start: date of absence                      End: date of absence

- |              |                |
|--------------|----------------|
| 01. January  | 07. July       |
| 02. February | 08. August     |
| 03. March    | 09. September  |
| 04. April    | 10. October    |
| 05. May      | 11. November   |
| 06. June     | 12. December   |
| 98. Refuse   | 99. Don't know |

If dates inconsistent with dates of absence go to CH\_E370  
 If more than one absence go to CH\_Q375  
 If one absence and more employers go to CH\_C001  
 If no more employers go to SE\_C001

Edit: Months in CH\_Q370 must be within months in CH\_Q330 and CH\_Q335; if not go to CH\_E370.

CH\_E370: Hard edit:

Check dates. Months looked for work in CH\_Q370 should be within dates of absence. Go back to CH\_Q330, CH\_Q335 or CH\_Q370 to correct.

Start: date of absence

End: date of absence

CH\_Q375: **When did his [last] absence from this job in [reference year] begin?**

**When did her [last] absence from this job in [reference year] begin?**

**When did your [last] absence from this job in [reference year] begin?**

Interviewer enters day/month/year

Hard range:    minimum:    if job type = 2 then date must be > date returned to work (DA\_Q075);  
if job type = 1 or 3 then the date must be >= date in CH\_Q335  
maximum:    end date of job from employer roster or 31/12/[reference year]

go to CH\_Q380

CH\_Q380: **When did this absence end?**

INTERVIEWER: If absence continued into [current year] enter 31/12/[reference year]

Hard range:    minimum:    start date of last absence  
maximum:    end date of job or 31/12/[reference year] if job not ended

Interviewer enters day/month/ year

If a year > reference year is entered the following hard edit will pop: "If absence continued into [current year] enter 31/12/[reference year]."

If start or end date is Refuse/Don't know    go to CH\_Q385  
Otherwise    go to CH\_Q390

Edit: CH\_Q380 – CH\_Q375 > 4; if not, go to CH\_E380

CH\_E380: Check dates. Absence spell should be at least 5 working days.

CH\_Q385: **About how many weeks would you say this absence lasted?**

Hard range: minimum: 1  
maximum: 52

Interviewer enters estimate

go to CH\_Q390

?CH\_Q390: **What was the main reason for this [last] absence?**

01. Own illness or disability
02. Maternity leave (females only)
03. Paternity leave (males only)
04. Caring for own children
05. Caring for elder relative(s)
06. Other personal or family responsibilities
07. School or educational leave
08. Labour dispute (strike or lockout)
09. Seasonal layoff
10. Temporary layoff due to business conditions
11. Unpaid or partially paid vacation
12. Other (specify)
98. Refuse
99. Don't know

If answered 01 "Own illness or disability" go to CH\_Q395

If answered 12 "Other" go to CH\_S390

Otherwise go to CH\_Q400

CH\_S390: INTERVIEWER: Specify

Maximum: 80 characters

go to CH\_Q400

?CH\_Q395: **Was this due to a work related illness or injury?**

1. Yes
2. No
8. Refuse
9. Don't know

go to CH\_Q400

CH\_Q400: **Did he receive any pay from [employer] for this absence?**

**Did she receive any pay from [employer] for this absence?**

**Did you receive any pay from [employer] for this absence?**

1. Yes
2. No
8. Refuse
9. Don't know

If Yes go to CH\_Q405  
If No and CH\_Q390 = 09 "seasonal layoff", go to CH\_Q410

Otherwise if more employers, go to CH\_C001;  
if no more employers, go to SE\_C001

CH\_Q405: **Was that full or partial pay?**

1. Full pay
2. Partial pay
8. Refuse
9. Don't know

If CH\_Q390 = 09 "seasonal layoff" go to CH\_Q410

Otherwise if more employers, go to CH\_C001;  
if no more employers, go to SE\_C001

?CH\_Q410: **Did he look for another job during this absence?**

**Did she look for another job during this absence?**

**Did you look for another job during this absence?**

1. Yes
2. No
8. Refuse
9. Don't know

If Yes if absence start and end dates complete, go to CH\_Q415;  
if not complete and more employers, go to CH\_C001;

if not complete and no more employers, go to SE\_C001

If No/Refuse/Don't know if more employers, go to CH\_C001;  
if no more employers, go to SE\_C001

?CH\_Q415: In which months did he look for another job?

In which months did she look for another job?

In which months did you look for another job?

INTERVIEWER: Mark all that apply. Months marked should be within dates shown below.

Start: date of absence                      End: date of absence

- |     |          |     |            |
|-----|----------|-----|------------|
| 01. | January  | 07. | July       |
| 02. | February | 08. | August     |
| 03. | March    | 09. | September  |
| 04. | April    | 10. | October    |
| 05. | May      | 11. | November   |
| 06. | June     | 12. | December   |
| 98. | Refuse   | 99. | Don't know |

Edit:  
Months in CH\_Q415 must be within months in CH\_Q375 and CH\_Q380, if not go to CH\_E415  
Otherwise, if more employers go to CH\_C001;  
if no more employers go to SE\_C001

CH\_E415: Hard edit:  
Check dates. Months looked for work in CH\_Q415 should be within dates of absence. Go back to CH\_Q375, CH\_Q380 or CH\_Q415 to correct.

Start: date of absence                      End: date of absence

To correct go back to CH\_Q375, CH\_Q380 or CH\_Q415  
Otherwise if more employers go to CH\_C001;  
if no more employers go to SE\_C001

### 6.3 SE Module

SE\_C001: If there are jobless spells go to SE\_C002  
Otherwise go to CO\_C001

SE\_C002: If start date or end date of jobless  
spell = R/DK go to CO\_C001  
Otherwise go to SE\_C003

SE\_C003: Compinfo.lookwk59 =1 (was jobless  
Jan. 1, reference year) and gap  
started < = Jan 6 reference year go to SE\_Q001  
Otherwise go to SE\_C004

SE\_C004: If a jobless spell identified during  
current interview go to SE\_Q005  
Otherwise go to CO\_C001

Header: Non working period from \_\_\_\_\_ to \_\_\_\_\_

?SE\_Q001: **Based on our interview of a year ago, [respondent] was looking for work around the beginning of January [reference year]. Is this correct?**

**Based on our interview of a year ago, you were looking for work around the beginning of January [reference year]. Is this correct?**

1. Yes
2. No
3. Refuse
9. Don't know

If Yes go to SE\_Q007  
If No/Refuse/Don't know go to SE\_Q005

SE\_Q005: **Did [respondent] look for work at any time between [start date of jobless spell] and [end date of jobless spell]?**

**Did you look for work at any time between [start date of jobless spell] and [end date of jobless spell]?**

1. Yes
2. No
8. Refuse
9. Don't know

If Yes go to SE\_Q007  
If No/Refuse/Don't know go to SE\_Q015

SE\_Q007: **Did he look for a full-time or a part-time job?**

**Did she look for a full-time or a part-time job?**

**Did you look for a full-time or a part-time job?**

INTERVIEWER: A full-time job is a job with 30 or more hours worked per week. If the respondent is unsure, enter "Full-time".

1. Full-time
2. Part-time
8. Don't know
9. Refuse

go to SE\_Q010

SE\_Q010: **In which months did he look?**

**In which months did she look?**

**In which months did you look?**

1. In all months of jobless spell
2. Specify months
8. Refuse
9. Don't know

If answered 1 "In all months of jobless spell"/Refuse/Don't know

if another jobless spell, go to SE\_Q005;

if no more jobless spells, go to CO\_C001

Otherwise

go to SE\_N010

SE\_N010: INTERVIEWER: Indicate months looked for work. Months must be between [start of jobless spell] and [end of jobless spell]. Select from list of months; mark all that apply

- |              |               |
|--------------|---------------|
| 01. January  | 07. July      |
| 02. February | 08. August    |
| 03. March    | 09. September |



- 03. Caring for elder relative(s)
- 04. Other personal or family responsibilities
- 05. Going to school
- 06. Waiting for recall (to former job)
- 07. Waiting for replies from employers
- 08. Believes no work available
- 09. No reason given
- 10. Other (specify)
- 98. Refuse
- 99. Don't know

If answered 10 "Other" go to SE\_S020  
 Otherwise if another jobless spell, go to SE\_Q005;  
 if no more jobless spells, go to CO\_C001

SE\_S020: INTERVIEWER: Specify

Maximum: 80 bytes

If another jobless spell go to SE\_Q005  
 If no more jobless spells go to CO\_C001

#### 6.4 CO Module

CO\_C001: If Compinfo.uiflg59 = 1 (received Employment Insurance benefits in December [previous reference year]) go to CO\_Q005  
 Otherwise go to CO\_C002

CO\_C002: If (Hhinfo.uiflg59 = 2 or empty) and EX\_Q005 = No (never worked) go to CO\_C035  
 Otherwise ((Hhinfo.uiflg59 = 2 or empty) and EX\_Q005 = Yes (has ever worked), DK, R or Blank) go to CO\_Q010

CO\_Q005: **Based on our interview of a year ago, [respondent] received Employment Insurance benefits in December [previous year]. Is this correct?**

**Based on our interview of a year ago, you received Employment Insurance benefits in December [previous year]. Is this correct?**

- 1. Yes

- 2. No
- 8. Refuse
- 9. Don't know

go to CO\_Q010

?CO\_Q010: **Did [respondent] receive any income from Employment Insurance benefits in [reference year]?**

**Did you receive any income from Employment Insurance benefits in [reference year]?**

- 1. Yes (set UIFlg to 1)
- 2. No
- 8. Refuse
- 9. Don't know

If Yes go to CO\_Q015  
 Otherwise go to CO\_C020

CO\_Q015: **In which months?**

- 1. All months of the year go to CO\_C020
- 2. Specify months go to CO\_N015
- 8. Refuse go to CO\_C020
- 9. Don't know go to CO\_C020

CO\_N015: INTERVIEWWK: indicate months Employment Insurance benefits received

- |              |                |
|--------------|----------------|
| 01. January  | 07. July       |
| 02. February | 08. August     |
| 03. March    | 09. September  |
| 04. April    | 10. October    |
| 05. May      | 11. November   |
| 06. June     | 12. December   |
| 98. Refuse   | 99. Don't know |

If response = Refuse or Don't know go to CO\_C015  
 Otherwise go to CO\_C020

CO\_C015: If CO\_N015 = Refuse/Don't know, then set CO\_Q015 to Refuse/Don't know  
 Go to CO\_C020

CO\_C020: If Hhinfo.wrkcmp59 = 1 (received Workers'

Compensation benefits in December  
[previous reference year]) go to CO\_Q020  
Otherwise go to CO\_Q025

CO\_Q020: **Based on our interview of a year ago, he received Workers' Compensation benefits in December [previous year]. Is this correct?**

**Based on our interview of a year ago, she received Workers' Compensation benefits in December [previous year]. Is this correct?**

**Based on our interview of a year ago, you received Workers' Compensation benefits in December [previous year]. Is this correct?**

1. Yes
2. No
8. Refuse
9. Don't know

go to CO\_Q025

?CO\_Q025: **Did he receive any income from Workers' Compensation benefits in [reference year]?**

**Did she receive any income from Workers' Compensation benefits in [reference year]?**

**Did you receive any income from Workers' Compensation benefits in [reference year]?**

1. Yes (set WorkCom to 1)
2. No
8. Refuse
9. Don't know

If Yes go to CO\_Q030  
Otherwise go to CO\_C035

CO\_Q030: **In which months?**

1. All months of the year go to CO\_C035
2. Specify months go to CO\_N030
8. Refuse go to CO\_C035
9. Don't know go to CO\_C035

CO\_N030: INTERVIEWER: Indicate months Workers' Compensation benefits received

- |     |          |     |            |
|-----|----------|-----|------------|
| 01. | January  | 07. | July       |
| 02. | February | 08. | August     |
| 03. | March    | 09. | September  |
| 04. | April    | 10. | October    |
| 05. | May      | 11. | November   |
| 06. | June     | 12. | December   |
| 98. | Refuse   | 99. | Don't know |

If response = Refuse or Don't know go to CO\_C030  
Otherwise go to CO\_C035

CO\_C030: If CO\_N030 = Refuse/Don't know, then set CO\_Q030 to Refuse/Don't know  
Go to CO\_C035

CO\_C035: If Hhinfo.socass = 1 (received Social Assistance in December [previous reference year] go to CO\_Q035  
Otherwise go to CO\_Q040

?CO\_Q035: **Based on our interview of a year ago, he received Social Assistance or welfare in December [previous year]. Is this correct?**

**Based on our interview of a year ago, she received Social Assistance or welfare in December [previous year]. Is this correct?**

**Based on our interview of a year ago, you received Social Assistance or welfare in December [previous year]. Is this correct?**

1. Yes
2. No
8. Refuse
9. Don't know

go to CO\_Q040

?CO\_Q040: **Did he receive any income from Social Assistance or welfare in [reference year]?**

**Did she receive any income from Social Assistance or welfare in [reference year]?**

**Did you receive any income from Social Assistance or welfare in [reference year]?**

- 1. Yes (set SocAs to 1)
- 2. No
- 8. Refuse
- 9. Don't know

If Yes go to CO\_Q045  
Otherwise go to SP\_Q001

CO\_Q045: **In which months?**

- 1. All months of the year
- 2. Specify months
- 8. Refuse
- 9. Don't know

If "Specify months" go to CO\_N045  
Otherwise go to SP\_Q001

CO\_N045: INTERVIEWER: Indicate months Social assistance received

- |              |                |
|--------------|----------------|
| 01. January  | 07. July       |
| 02. February | 08. August     |
| 03. March    | 09. September  |
| 04. April    | 10. October    |
| 05. May      | 11. November   |
| 06. June     | 12. December   |
| 98. Refuse   | 99. Don't know |

If response = Refuse or Don't know go to CO\_C045  
Otherwise go to SP\_Q001

CO\_C045: If CO\_N045 = Refuse/Don't know, then set CO\_Q045 to Refuse/Don't know  
Go to SP\_Q001

## 6.5 SP Module

?SP\_Q001: **In [reference year], did he RECEIVE any support payments from a former spouse or partner? By support payments we mean alimony, separation allowance, or child support.**

**In [reference year], did she RECEIVE any support payments from a former spouse or partner? By support payments we mean alimony, separation allowance, or child support.**

**In [reference year], did you RECEIVE any support payments from a former spouse or partner? By support payments we mean alimony, separation allowance, or child support.**

**INTERVIEWER:** “Support payments” are covered by an agreement to pay a fixed amount on a regular basis. Exclude all other gifts or transfers of money. Include only support payments actually received.

1. Yes
2. No
8. Refuse
9. Don't know

If Yes go to SP\_Q005  
Otherwise go to SP\_Q010

?SP\_Q005: **What was the total amount he RECEIVED in support payments in [reference year]?**

**What was the total amount she RECEIVED in support payments in [reference year]?**

**What was the total amount you RECEIVED in support payments in [reference year]?**

Hard range: minimum: \$ 1  
maximum: \$ 200000

Soft range: maximum: \$50000

if a valid amount is entered, set strspnd

go to SP\_Q010

?SP\_Q010: **In [reference year], did he PAY any support payments to a former spouse or partner?**

**In [reference year], did she PAY any support payments to a former spouse or partner?**



(at least one child < 16 in hhld and respondent  
did not give birth/father/adopt, or no  
kids < 16 in hhld) go to SP\_R050

If prflg = 2 and:  
Kids15Flg = 1 (at least one child  
< 16 in hhld) go to SP\_C020  
Otherwise, (Kids15Flg <> 1) (no  
kids < 16 in hhld) go to SP\_R050

SP\_C020: If age59 > 19 go to SP\_Q020  
Otherwise go to SP\_R050

?SP\_Q020: **In [reference year], did he pay for child care, such as day care  
or babysitting, so that he could work at his paid job(s)?**

**In [reference year], did she pay for child care, such as day care  
or babysitting, so that she could work at her paid job(s)?**

**In [reference year], did you pay for child care, such as day care  
or babysitting, so that you could work at your paid job(s)?**

**INTERVIEWER:** Do not double-count any expenses paid by the  
household that were already reported for (or  
by) another household member. Exclude  
payments to family members living with you.

1. Yes
2. No
8. Refuse
9. Don't know

If Yes go to SP\_Q025  
Otherwise go to SP\_Q040

SP\_Q025: **What was the total amount he paid for child care in [reference  
year] so that he could work at his paid job(s)?**

**What was the total amount she paid for child care in [reference  
year] so that she could work at her paid job(s)?**

**What was the total amount you paid for child care in  
[reference year] so that you could work at your paid job(s)?**

INTERVIEWER: Do not double-count any expenses paid by the household that were already reported for (or by) another member.

Hard range: minimum: \$ 1  
maximum: \$ 100000

Soft range: maximum: \$ 50000

If amount entered go to SP\_Q030  
Otherwise go to SP\_R050

SP\_Q030: **Does this include amounts he paid for child care or programs for children so he could continue to work at his job(s) during school holidays?**

**Does this include amounts she paid for child care or programs for children so she could continue to work at her job(s) during school holidays?**

**Does this include amounts you paid for child care or programs for children so you could continue to work at your job(s) during school holidays?**

INTERVIEWER: Do not double-count any expenses paid by the household that were already reported for (or by) another household member.

1. Yes
2. No
8. Refuse
9. Don't know

If No go to SP\_Q035  
Otherwise go to SP\_R050

SP\_Q035: **What was the additional amount for school holidays?**

INTERVIEWER: Do not double-count any expenses paid by the household that were already reported for (or by) another member.

Hard range: minimum: \$ 0  
maximum: \$ 50000

Soft range: maximum: \$ 10000

go to SP\_R050

?SP\_Q040: **During school holidays** in [reference year], did he pay for babysitting or programs for children **so that he could work at his paid job(s)?**

**During school holidays** in [reference year], did she pay for babysitting or programs for children **so that she could work at her paid job(s)?**

**During school holidays** in [reference year], did you pay for babysitting or programs for children **so that you could work at your paid job(s)?**

**INTERVIEWER:** Do not double-count any expenses paid by the household that were already reported for (or by) another member. Exclude payments to family members living with you.

1. Yes
2. No
8. Refuse
9. Don't know

If Yes go to SP\_Q045  
Otherwise go to SP\_R050

SP\_Q045: **How much were those expenses?**

Hard range: minimum: \$ 1  
maximum: \$ 50000

Soft range: maximum: \$ 10000

go to SP\_R050

SP\_R050: **The next series of questions will be about money that was given or received other than what has already been mentioned.**

**INTERVIEWER:** Press <Enter> to continue.

go to SP\_Q050

?SP\_Q050: **In [reference year], did he give any money to family members who were not living with him?**

**In [reference year], did she give any money to family members who were not living with her?**

**In [reference year], did you give any money to family members who were not living with you?**

1. Yes
2. No
8. Refuse
9. Don't know

go to SP\_Q055

?SP\_Q055: **In [reference year], did he make any regular payments on behalf of any family member who was not living with him?**

**In [reference year], did she make any regular payments on behalf of any family member who was not living with her?**

**In [reference year], did you make any regular payments on behalf of any family member who was not living with you?**

1. Yes
2. No
8. Refuse
9. Don't know

go to SP\_C060

SP\_C060: If SP\_Q050 or SP\_Q055 = Yes go to SP\_Q060  
Otherwise go to SP\_Q075

SP\_Q060: **What was the total amount he gave to persons living in Canada in [reference year]?**

**What was the total amount she gave to persons living in Canada in [reference year]?**

**What was the total amount [you] gave to persons living in Canada in [reference year]?**

INTERVIEWER: Include money given to family members and regular payments made on their behalf.

Hard range: minimum: \$ 0

maximum: \$200000

Soft range: maximum: \$50000

go to SP\_Q065

SP\_Q065: **What was the total amount he gave to persons living outside of Canada in [reference year]?**

**What was the total amounts she gave to persons living outside of Canada in [reference year]?**

**What was the total amount you gave to persons living outside of Canada in [reference year]?**

INTERVIEWER: Include money given to family members and regular payments made on their behalf.

Hard range: minimum: \$ 0  
maximum: \$200000

Soft range: maximum: \$50000

If response = 0 or DK/N go to SP\_Q075  
Otherwise go to SP\_Q070

SP\_Q070: **To which countries was this money sent?**

INTERVIEWER: Mark all that apply.

- |                 |                     |
|-----------------|---------------------|
| 01. Britain     | 11. Philippines     |
| 02. China       | 12. Romania         |
| 03. El Salvador | 13. Russia          |
| 04. Guyana      | 14. Sri Lanka       |
| 05. Haiti       | 15. Trinidad-Tobago |
| 06. India       | 16. Ukraine         |
| 07. Iran        | 17. U.S.A.          |
| 08. Jamaica     | 18. Vietnam         |
| 09. Mexico      | 19. Other (specify) |
| 10. Pakistan    | 98. Refuse          |
|                 | 99. Don't know      |

If 19 "Other (specify)" go to SP\_S070  
Otherwise go to SP\_Q075

SP\_S070: INTERVIEWER: Specify

Maximum: 80 characters

go to SP\_Q075

?SP\_Q075: **In [reference year], did he receive any money from family members who were not living with him?**

**In [reference year], did she receive any money from family members who were not living with her?**

**In [reference year], did you receive any money from family members who were not living with you?**

1. Yes
2. No
8. Refuse
9. Don't know

go to SP\_Q080

?SP\_Q080: **In [reference year], were any regular payments made on his behalf by any family member who was not living with him?**

**In [reference year], were any regular payments made on her behalf by any family member who was not living with her?**

**In [reference year], were any regular payments made on your behalf by any family member who was not living with you?**

1. Yes
2. No
8. Refuse
9. Don't know

go to SP\_C085

SP\_C085: If SP\_Q075 or SP\_Q080 = Yes go to SP\_Q085  
Otherwise go to ED\_R001

SP\_Q085: **What was the total amount he received from persons living in Canada in [reference year]?**

**What was the total amount she received from persons living in Canada in [reference year]?**

**What was the total amount you received from persons living in Canada in [reference year]?**

INTERVIEWER: Include money received from family members and regular payments made by them.

Hard range: minimum: \$ 0  
maximum: \$200000

Soft range: maximum: \$50000

go to SP\_Q090

SP\_Q090: **What was the total amount he received from persons living outside of Canada in [reference year]?**

**What was the total amount she received from persons living outside of Canada in [reference year]?**

**What was the total amount you received from persons living outside of Canada in [reference year]?**

INTERVIEWER: Include money received from family members and regular payments made by them.

Hard range: minimum: \$ 0  
maximum: \$200000

Soft range: maximum: \$50000

If response = 0 or DK/R go to ED\_R001  
Otherwise go to SP\_Q095

SP\_Q095: **From which countries was this money sent?**

INTERVIEWER: Mark all that apply.

- |                 |                     |
|-----------------|---------------------|
| 01. Britain     | 11. Philippines     |
| 02. China       | 12. Romania         |
| 03. El Salvador | 13. Russia          |
| 04. Guyana      | 14. Sri Lanka       |
| 05. Haiti       | 15. Trinidad-Tobago |
| 06. India       | 16. Ukraine         |
| 07. Iran        | 17. U.S.A.          |
| 08. Jamaica     | 18. Viet Nam        |
| 09. Mexico      | 19. Other (specify) |

10. Pakistan

98. Refuse

99. Don't know

If 19 "Other (specify)"

go to SP\_S095

Otherwise

go to ED\_R001

SP\_S095: INTERVIEWER: Specify

Maximum: 80 characters

go to ED\_R001

## 6.6 ED Module

The EDUC module basically covers two types of training activities. The first series of questions (ED\_Q021 to ED\_Q190) deals with "training programs". A program is a series of courses offered by, through or under the auspices of an educational institution (private or public) that are used as credits towards a degree, diploma or certificate.

The education module captures all institutions attended by the respondent during the reference year and all degrees, certificates or diplomas completed. This results in a series of flows for each type of institution attended (ED\_Q020). For example: if a respondent attended high school and university, we would ask ED\_Q021 to ED\_Q026 and ED\_Q030 to ED\_Q175. If another attended community college and then a business or commercial school we would ask ED\_Q030 to ED\_Q070.

If ED\_Q005 = "Yes" (attended an educational institution in the reference year), and flows for attending all institutions have been completed, ED\_Q150 asks about any other degrees, certificates or diplomas received during the reference year. This identifies situations where a respondent received a degree in the reference year although the program finished the previous year.

Without ED\_Q150, these "degrees" would not be recorded. Similarly, if ED\_Q005 = "No" then ED\_Q185 will also pick up these hidden "degrees", that is degrees or certificates awarded after the year that the respondent attended the institution.

Questions on student loans are asked of respondents who are less than 45 years old and who reported either attending or receiving a diploma from a post-secondary institution.

The second series of questions (ED\_Q300 to ED\_Q350) deals with job-related "training courses". For the purpose of the questionnaire, training activities such as

courses, seminars, workshops, conferences and forums are covered by these questions.

ED\_R001: **The next series of questions will be about education.**

INTERVIEWER: Press <Enter> to continue.

go to ED\_C001

ED\_C001: If Hhinfo.studnt59 = 1 go to ED\_Q001  
If Hhinfo.studnt59 = 2 go to ED\_Q005

?ED\_Q001: **Based on our interview of a year ago, [respondent] was attending a school, college or university in December [previous year]. Is this correct?**

**Based on our interview of a year ago, you were attending a school, college or university in December [previous year]. Is this correct?**

1. Yes
2. No
8. Refuse
9. Don't know

go to ED\_Q005

?ED\_Q005: **Did [respondent] attend a school, college or university in [reference year]? Only include attendance in programs taken to obtain a certificate, diploma or degree from a recognized institution.**

**Did you attend a school, college or university in [reference year]? Only include attendance in programs taken to obtain a certificate, diploma or degree from a recognized institution.**

INTERVIEWER: Do not include courses taken for leisure, recreation or personal interest.

1. Yes
2. No
8. Refuse
9. Don't know

If Yes go to ED\_Q020  
Otherwise go to ED\_Q185

?ED\_Q020: **What type of school did he attend between January and December, [reference year]? Was it a(n)**

**What type of school did she attend between January and December, [reference year]? Was it a(n)**

**What type of school did you attend between January and December, [reference year]? Was it a(n)**

INTERVIEWER: Mark all that apply but select only one response per school, i.e. a place should not be listed twice because it is a trade school, but could also be called a community college.

1. **High school or adult education at the high school level**
2. **Community college or institute of applied arts and technology**
3. **Business or commercial school**
4. **Apprenticeship program, trade or vocational school**
5. **CEGEP**
6. **University**
8. Refuse
9. Don't know

If answered 1 "High school" go to ED\_Q021

If answered 2, 3, 4, 5 or 6 "Apprenticeship program, trade, Coll/Bus/Cegep/Univ" go to ED\_N029

Otherwise (DK/R) go to ED\_Q185

?ED\_Q021: **In [reference year], during which months did he attend high school?**

**In [reference year], during which months did she attend high school?**

**In [reference year], during which months did you attend high school?**

INTERVIEWER: Select all months that apply

- |              |               |
|--------------|---------------|
| 01. January  | 07. July      |
| 02. February | 08. August    |
| 03. March    | 09. September |
| 04. April    | 10. October   |
| 05. May      | 11. November  |
| 06. June     | 12. December  |

98. Refuse

99. Don't know

go to ED\_Q021B

?ED\_Q021B: **On average, how many hours per week did he attend high school?**

**On average, how many hours per week did she attend high school?**

**On average, how many hours per week did you attend high school?**

INTERVIEWER: If respondent not sure, probe for best estimate

Hard range: minimum: 1.00  
maximum: 168.00

Soft range: maximum: 50.00

go to ED\_Q022

?ED\_Q022: **Was he considered a full-time or a part-time student?**

**Was she considered a full-time or a part-time student?**

**Were you considered a full-time or a part-time student?**

1. Full time
2. Part time
3. Some of each
8. Refuse
9. Don't know

go to ED\_C023

ED\_C023: If age >19, go to ED\_Q023  
Otherwise, go to ED\_C025

?ED\_Q023: **When he enrolled in this high school program, did he have objectives related to a current or future job or did he enroll only for personal interest?**

**When she enrolled in this high school program, did she have objectives related to a current or future job or did she enroll only for personal interest?**

**When you enrolled in this high school program, did you have objectives related to a current or future job or did you enroll only for personal interest?**

1. Current or future job
2. Personal interest
8. Refuse
9. Don't know

If answered 1 "Current or future job" go to ED\_Q024  
Otherwise go to ED\_C025

ED\_Q024: **Was it to...**

INTERVIEWER: Mark all that apply.

01. **Prepare for a first career?**
02. **Increase income?**
03. **Avoid losing a current job?**
04. **Get a promotion?**
05. **Do a current job better?**
06. **Start own business?**
07. **Help find or change a job?**
08. Other
98. Refuse
99. Don't know

go to ED\_C025

ED\_C025: If a job was reported in Dates (DA\_Q005 = Yes or DA\_Q010 = Yes or DA\_Q015 = Yes or DA\_Q025 = Yes or DA\_Q040 <> empty), go to ED\_Q025  
Otherwise, go to ED\_Q026

?ED\_Q025: **Did an employer provide any support while he was attending high school? For example by providing or paying for the training, allowing a flexible work schedule, providing transportation or any other type of support?**

**Did an employer provide any support while she was attending high school? For example by providing or paying for the training, allowing a flexible work schedule, providing transportation or any other type of support?**

**Did an employer provide any support while you were attending high school? For example by providing or paying for the**

**training, allowing a flexible work schedule, providing transportation or any other type of support?**

1. Yes
2. No
8. Refuse
9. Don't know

go to ED\_Q026

ED\_Q026: **Did he complete high school in [reference year]?**

**Did she complete high school in [reference year]?**

**Did you complete high school in [reference year]?**

1. Yes
2. No
8. Refuse
9. Don't know

If Yes go to ED\_Q027

If No go to ED\_Q028

Otherwise go to ED\_N029

ED\_Q027: **In which province or territory did he receive his high school diploma?**

**In which province or territory did she receive her high school diploma?**

**In which province or territory did you receive your high school diploma?**

- |                               |                                  |
|-------------------------------|----------------------------------|
| 10. Newfoundland and Labrador | 59. British Columbia             |
| 11. Prince Edward Island      | 60. Yukon                        |
| 12. Nova Scotia               | 61. Northwest Territories        |
| 13. New Brunswick             | 62. Nunavut                      |
| 24. Quebec                    | 76. U.S.A.                       |
| 35. Ontario                   | 77. Outside of Canada and U.S.A. |
| 46. Manitoba                  | 98. Refuse                       |
| 47. Saskatchewan              | 99. Don't know                   |
| 48. Alberta                   |                                  |

go to ED\_N029

ED\_Q028: **What is the main reason he did not complete high school?**

**What is the main reason she did not complete high school?**

**What is the main reason you did not complete high school?**

01. Still attending school
02. No main reason
03. Bored with school
04. Problems with school work
05. Teacher problems
06. Bad results at school
07. Expelled from school
08. Skipped classes
09. Pregnancy/take care of children
10. Marriage
11. Lack of time
12. Problems at home
13. Drug and alcohol problems
14. To help at home
15. Own illness, disability or accident
16. Had to work/financial reasons
17. Preferred work to school
18. Other reasons
98. Refuse
99. Don't know

go to ED\_N029

ED\_N029: **INTERVIEWER:** The following series of questions relate to education programs taken during [reference year]. Only include programs taken to obtain a certificate, diploma or degree from a recognized institution.  
Press <Enter> to continue

go to next of ED\_Q030, Q055, Q079, Q105, Q130 or Q150  
depending on answers(s) marked in ED\_Q020

?ED\_Q030: **In [reference year], during which months did he attend the community college or institute?**

**In [reference year], during which months did she attend the community college or institute?**

**In [reference year], during which months did you attend the community college or institute?**

INTERVIEWER: Select all months that apply

- |     |          |     |            |
|-----|----------|-----|------------|
| 01. | January  | 07. | July       |
| 02. | February | 08. | August     |
| 03. | March    | 09. | September  |
| 04. | April    | 10. | October    |
| 05. | May      | 11. | November   |
| 06. | June     | 12. | December   |
| 98. | Refuse   | 99. | Don't know |

go to ED\_Q031

?ED\_Q031: **On average, how many hours per week did he attend this community college or institute?**

**On average, how many hours per week did she attend this community college or institute?**

**On average, how many hours per week did you attend this community college or institute?**

INTERVIEWER: If respondent not sure, probe for best estimate

Hard range:   minimum:       1.00  
                  maximum:       168.00

Soft range:    maximum:       50.00

go to ED\_Q032

ED\_Q032: **Was he considered a full-time or a part-time student?**

**Was she considered a full-time or a part-time student?**

**Were you considered a full-time or a part-time student?**

1. Full time
2. Part time
3. Some of each
8. Refuse
9. Don't know

go to ED\_Q033

?ED\_Q033: **When he enrolled in this community college or institute program, did he have objectives related to a current or future job or did he enroll only for personal interest?**

**When she enrolled in this community college or institute program, did she have objectives related to a current or future job or did she enroll only for personal interest?**

**When you enrolled in this community college or institute program, did you have objectives related to a current or future job or did you enroll only for personal interest?**

1. Current or future job
2. Personal interest
8. Refuse
9. Don't know

If answered 1 "Current or future job" go to ED\_Q034  
Otherwise go to ED\_Q035

ED\_Q034: **Was it to...**

INTERVIEWER: Mark all that apply.

01. Prepare for a first career?
02. Increase income?
03. Avoid losing a current job?
04. Get a promotion?
05. Do a current job better?
06. Start own business?
07. Help find or change a job?
08. Other
98. Refuse
99. Don't know

go to ED\_Q035

ED\_Q035: **What was the major field of study or specialization?**

Maximum: 48 characters

go to ED\_C042

ED\_C042: If a job was reported in Dates (DA\_Q005 = Yes or DA\_Q010 = Yes or DA\_Q015 = Yes or DA\_Q025 = Yes or DA\_Q040 <> empty), go to ED\_Q042

Otherwise, go to ED\_Q043

?ED\_Q042: **Did an employer provide any support while he was attending this community college or institute? For example by providing or paying for the training, allowing a flexible work schedule, providing transportation or any other type of support?**

**Did an employer provide any support while she was attending this community college or institute? For example by providing or paying for the training, allowing a flexible work schedule, providing transportation or any other type of support?**

**Did an employer provide any support while you were attending this community college or institute? For example by providing or paying for the training, allowing a flexible work schedule, providing transportation or any other type of support?**

1. Yes
2. No
8. Refuse
9. Don't know

go to ED\_Q043

ED\_Q043: **Did he receive any certificates or diplomas from this community college or institute of applied arts and technology in [reference year]?**

**Did she receive any certificates or diplomas from this community college or institute of applied arts and technology in [reference year]?**

**Did you receive any certificates or diplomas from this community college or institute of applied arts and technology in [reference year]?**

**INTERVIEWER:** Only include certificates, diplomas or degrees from a recognized institution that resulted in graduation from a program. Do not include certificates, diplomas from single courses.

1. Yes
2. No
8. Refuse
9. Don't know

If Yes go to ED\_Q044  
Otherwise go to next of ED\_Q055, Q079, Q105, Q130 or  
Q150 depending on answer(s) marked in ED\_Q020

ED\_Q044: **In which province or territory did he receive this diploma?**

**In which province or territory did she receive this diploma?**

**In which province or territory did you receive this diploma?**

- |                               |                                     |
|-------------------------------|-------------------------------------|
| 10. Newfoundland and Labrador | 59. British Columbia                |
| 11. Prince Edward Island      | 60. Yukon                           |
| 12. Nova Scotia               | 61. Northwest Territories           |
| 13. New Brunswick             | 62. Nunavut                         |
| 24. Quebec                    | 76. U.S.A.                          |
| 35. Ontario                   | 77. Outside of Canada<br>and U.S.A. |
| 46. Manitoba                  | 98. Refuse                          |
| 47. Saskatchewan              | 99. Don't know                      |
| 48. Alberta                   |                                     |

go to ED\_Q045

?ED\_Q045: **Overall, how long did it take him to complete this program?**

**Overall, how long did it take her to complete this program?**

**Overall, how long did it take you to complete this program?**

1. Answer given in months
2. Answer given in years
8. Refuse
9. Don't know

If Answer given in months

go to ED\_N045

If Answer given in years

go to ED\_N050

Otherwise

go to next of ED\_Q055,  
Q079, Q105, Q130 or Q150  
depending on answers(s)  
marked in ED\_Q020

ED\_N045: **INTERVIEWER: Enter the number of months it took to complete  
this program**

Hard range: minimum: 1  
maximum: 95

go to next of ED\_Q055, Q079, Q105, Q130 or Q150 depending on answers(s) marked in ED\_Q020

ED\_N050: INTERVIEWER: Enter the number of years it took to complete this program

Hard range: minimum: 1  
maximum: 7

go to next of ED\_Q055, Q079, Q105, Q130 or Q150 depending on answers(s) marked in ED\_Q020

?ED\_Q055: **In [reference year], during which months did he attend the business or commercial school?**

**In [reference year], during which months did she attend the business or commercial school?**

**In [reference year], during which months did you attend the business or commercial school?**

INTERVIEWER: Select all months that apply

- |              |                |
|--------------|----------------|
| 01. January  | 07. July       |
| 02. February | 08. August     |
| 03. March    | 09. September  |
| 04. April    | 10. October    |
| 05. May      | 11. November   |
| 06. June     | 12. December   |
| 98. Refuse   | 99. Don't know |

go to ED\_Q056

?ED\_Q056: **On average, how many hours per week did he attend this business or commercial school?**

**On average, how many hours per week did she attend this business or commercial school?**

**On average, how many hours per week did you attend this business or commercial school?**

INTERVIEWER: If respondent not sure, probe for best estimate

Hard range: minimum: 1.00  
maximum: 168.00

Soft range: maximum: 50.00

go to ED\_Q057

ED\_Q057: **Was he considered a full-time or a part-time student?**

**Was she considered a full-time or a part-time student?**

**Were you considered a full-time or a part-time student?**

1. Full time
2. Part time
3. Some of each
8. Refuse
9. Don't know

go to ED\_Q058

?ED\_Q058: **When he enrolled in this business or commercial school program, did he have objectives related to a current or future job or did he enroll only for personal interest?**

**When she enrolled in this business or commercial school program, did she have objectives related to a current or future job or did she enroll only for personal interest?**

**When you enrolled in this business or commercial school program, did you have objectives related to a current or future job or did you enroll only for personal interest?**

1. Current or future job
2. Personal interest
8. Refuse
9. Don't know

If answered "Current or future job"

go to ED\_Q059

Otherwise

go to ED\_Q060

ED\_Q059: **Was it to...**

INTERVIEWER: Mark all that apply.

01. **Prepare for a first career?**
02. **Increase income?**
03. **Avoid losing a current job?**
04. **Get a promotion?**

- 05. **Do a current job better?**
- 06. **Start own business?**
- 07. **Help find or change a job?**
- 08. Other
- 98. Refuse
- 99. Don't know

go to ED\_Q060

ED\_Q060: **What was the major field of study or specialization?**

Maximum: 48 characters

go to ED\_C067

ED\_C067: If a job was reported in Dates (DA\_Q005 = Yes or DA\_Q010 = Yes or DA\_Q015 = Yes or DA\_Q025 = Yes or DA\_Q040 <> empty), go to ED\_Q067  
Otherwise, go to ED\_Q068

?ED\_Q067: **Did an employer provide any support while he was attending this business or commercial school? For example by providing or paying for the training, allowing a flexible work schedule, providing transportation or any other type of support?**

**Did an employer provide any support while she was this business or commercial school? For example by providing or paying for the training, allowing a flexible work schedule, providing transportation or any other type of support?**

**Did an employer provide any support while you were attending this business or commercial school? For example by providing or paying for the training, allowing a flexible work schedule, providing transportation or any other type of support?**

- 1. Yes
- 2. No
- 8. Refuse
- 9. Don't know

go to ED\_Q068

ED\_Q068: **Did he receive any certificates or diplomas from this business or commercial school in [reference year]?**

**Did she receive any certificates or diplomas from this business or commercial school in [reference year]?**

**Did you receive any certificates or diplomas from this business or commercial school in [reference year]?**

**INTERVIEWER:** Only include certificates, diplomas or degrees from a recognized institution that resulted in graduation from a program. Do not include certificates, diplomas from single courses.

1. Yes
2. No
8. Refuse
9. Don't know

If Yes go to ED\_Q069  
Otherwise go to next of ED\_Q079, Q105, Q130 or Q150 depending on answer(s) marked in ED\_Q020

ED\_Q069: **In which province or territory did he receive this diploma?**

**In which province or territory did she receive this diploma?**

**In which province or territory did you receive this diploma?**

- |                               |                                  |
|-------------------------------|----------------------------------|
| 10. Newfoundland and Labrador | 59. British Columbia             |
| 11. Prince Edward Island      | 60. Yukon                        |
| 12. Nova Scotia               | 61. Northwest Territories        |
| 13. New Brunswick             | 62. Nunavut                      |
| 24. Quebec                    | 76. U.S.A.                       |
| 35. Ontario                   | 77. Outside of Canada and U.S.A. |
| 46. Manitoba                  | 98. Refuse                       |
| 47. Saskatchewan              | 99. Don't know                   |
| 48. Alberta                   |                                  |

go to ED\_Q070

?ED\_Q070: **Overall, how long did it take him to complete this program?**

**Overall, how long did it take her to complete this program?**

**Overall, how long did it take you to complete this program?**

1. Answer given in months



**In [reference year], during which months did she [attend the trade or vocational school / participate in the registered apprenticeship program]?**

**In [reference year], during which months did you [attend the trade or vocational school / participate in the registered apprenticeship program]?**

INTERVIEWER: Select all months that apply

- |     |          |     |            |
|-----|----------|-----|------------|
| 01. | January  | 07. | July       |
| 02. | February | 08. | August     |
| 03. | March    | 09. | September  |
| 04. | April    | 10. | October    |
| 05. | May      | 11. | November   |
| 06. | June     | 12. | December   |
| 98. | Refuse   | 99. | Don't know |

If ED\_Q079 = Yes, prefill the question text with "participate in the registered apprenticeship program".

Otherwise, prefill the question text with "attend the trade or vocational school".

go to ED\_Q081

?ED\_Q081: **On average, how many hours per week did he [attend this trade or vocational school / participate in this registered apprenticeship program]?**

**On average, how many hours per week did she [attend this trade or vocational school / participate in this registered apprenticeship program]?**

**On average, how many hours per week did you [attend this trade or vocational school / participate in this registered apprenticeship program]?**

INTERVIEWER: If respondent not sure, probe for best estimate

If ED\_Q079 = Yes, prefill the question text with "participate in this registered apprenticeship program".

Otherwise, prefill the question text with "attend this trade or vocational school".

Hard range:   minimum:       1.00  
                  maximum:      168.00

Soft range: maximum: 50.00

go to ED\_Q082

ED\_Q082: **Was he considered a full-time or a part-time [student/apprentice]?**

**Was she considered a full-time or a part-time [student/apprentice]?**

**Were you considered a full-time or a part-time [student/apprentice]?**

1. Full time
2. Part time
3. Some of each
8. Refuse
9. Don't know

If ED\_Q079 = Yes, use the word "apprentice".  
Otherwise, use the word "student"

go to ED\_Q083

?ED\_Q083: **When he enrolled in this [trade or vocational school / registered apprenticeship] program, did he have objectives related to a current or future job or did he enroll only for personal interest?**

**When she enrolled in this [trade or vocational school / registered apprenticeship] program, did she have objectives related to a current or future job or did she enroll only for personal interest?**

**When you enrolled in this [trade or vocational school / registered apprenticeship] program, did you have objectives related to a current or future job or did you enroll only for personal interest?**

1. Current or future job
2. Personal interest
8. Refuse
9. Don't know

If ED\_Q079 = Yes, prefill the question text with "registered apprenticeship".

Otherwise, prefill the question text with "trade or vocational school".

If answered "Current or future job"                    go to ED\_Q084  
Otherwise    go to ED\_Q085

ED\_Q084:    **Was it to...**

INTERVIEWER: Mark all that apply.

01.    **Prepare for a first career?**
02.    **Increase income?**
03.    **Avoid losing a current job?**
04.    **Get a promotion?**
05.    **Do a current job better?**
06.    **Start own business?**
07.    **Help find or change a job?**
08.    Other
98.    Refuse
99.    Don't know

go to ED\_Q085

ED\_Q085:    **What was the major field of study or specialization?**

Maximum: 48 characters

go to ED\_C092

ED\_C092:    If a job was reported in Dates (DA\_Q005 = Yes or DA\_Q010 =  
Yes or DA\_Q015 = Yes or DA\_Q025 = Yes or DA\_Q040 <>  
empty), go to ED\_Q092  
Otherwise, go to ED\_Q093

?ED\_Q092:    **Did an employer provide any support while he was [attending  
this trade or vocational school / participating in this registered  
apprenticeship program]? For example by providing or paying  
for the training, allowing a flexible work schedule, providing  
transportation or any other type of support?**

**Did an employer provide any support while she was [attending  
this trade or vocational school / participating in this registered  
apprenticeship program]? For example by providing or paying  
for the training, allowing a flexible work schedule, providing  
transportation or any other type of support?**

**Did an employer provide any support while you were [attending this trade or vocational school / participating in this registered apprenticeship program]? For example by providing or paying for the training, allowing a flexible work schedule, providing transportation or any other type of support?**

1. Yes
2. No
8. Refuse
9. Don't know

If ED\_Q079 = Yes, prefill the question text with "participating in this registered apprenticeship program".

Otherwise, prefill the question text with "attending this trade or vocational school".

go to ED\_Q093

ED\_Q093: **Did he receive any certificates or diplomas from this [trade or vocational school / registered apprenticeship program] in [reference year]?**

**Did she receive any certificates or diplomas from this [trade or vocational school / registered apprenticeship program] in [reference year]?**

**Did you receive any certificates or diplomas from this [trade or vocational school / registered apprenticeship program] in [reference year]?**

**INTERVIEWER:** Only include certificates, diplomas or degrees from a recognized institution that resulted in graduation from a program. Do not include certificates, diplomas from single courses.

1. Yes
2. No
8. Refuse
9. Don't know

If ED\_Q079 = Yes, prefill the question text with "registered apprenticeship program".

Otherwise, prefill the question text with "trade or vocational school".

If Yes go to ED\_Q094  
Otherwise go to next of ED\_Q105, Q130 or Q150  
depending on answer(s) marked in  
ED\_Q020

ED\_Q094: **In which province or territory did he receive this diploma?**

**In which province or territory did she receive this diploma?**

**In which province or territory did you receive this diploma?**

- |                               |                                     |
|-------------------------------|-------------------------------------|
| 10. Newfoundland and Labrador | 59. British Columbia                |
| 11. Prince Edward Island      | 60. Yukon                           |
| 12. Nova Scotia               | 61. Northwest Territories           |
| 13. New Brunswick             | 62. Nunavut                         |
| 24. Quebec                    | 76. U.S.A.                          |
| 35. Ontario                   | 77. Outside of Canada<br>and U.S.A. |
| 46. Manitoba                  | 98. Refuse                          |
| 47. Saskatchewan              | 99. Don't know                      |
| 48. Alberta                   |                                     |

go to ED\_Q095

?ED\_Q095: **Overall, how long did it take him to complete this program?**

**Overall, how long did it take her to complete this program?**

**Overall, how long did it take you to complete this program?**

1. Answer given in months
2. Answer given in years
8. Refuse
9. Don't know

If Answer given in months

go to ED\_N095

If Answer given in years

go to ED\_N100

Otherwise

go to next of ED\_Q105,  
Q130 or Q150 depending on  
answers(s) marked in  
ED\_Q020

ED\_N095: **INTERVIEWER:** Enter the number of months it took to  
complete this program

Hard range: minimum: 1  
maximum: 95

go to next of ED\_Q105, Q130 or Q150 depending on answers(s)  
marked in ED\_Q020

ED\_N100: INTERVIEWER: Enter the number of years it took to complete  
this program

Hard range: minimum: 1  
maximum: 7

go to next of ED\_Q105, Q130 or Q150 depending on answers(s)  
marked in ED\_Q020

?ED\_Q105: **In [reference year], during which months did he attend the  
CEGEP?**

**In [reference year], during which months did she attend the  
CEGEP?**

**In [reference year], during which months did you attend the  
CEGEP?**

INTERVIEWER: Select all months that apply

- |              |                |
|--------------|----------------|
| 01. January  | 07. July       |
| 02. February | 08. August     |
| 03. March    | 09. September  |
| 04. April    | 10. October    |
| 05. May      | 11. November   |
| 06. June     | 12. December   |
| 98. Refuse   | 99. Don't know |

go to ED\_Q106

?ED\_Q106: **On average, how many hours per week did he attend this  
CEGEP?**

**On average, how many hours per week did she attend this  
CEGEP?**

**On average, how many hours per week did you attend this  
CEGEP?**

INTERVIEWER: If respondent not sure, probe for best estimate

Hard range: minimum: 1.00  
maximum: 168.00

Soft range: maximum: 50.00

go to ED\_Q107

ED\_Q107: **Was he considered a full-time or a part-time student?**

**Was she considered a full-time or a part-time student?**

**Were you considered a full-time or a part-time student?**

1. Full time
2. Part time
3. Some of each
8. Refuse
9. Don't know

go to ED\_Q108

?ED\_Q108: **When he enrolled in this CEGEP program, did he have objectives related to a current or future job or did he enroll only for personal interest?**

**When she enrolled in this CEGEP program, did she have objectives related to a current or future job or did she enroll only for personal interest?**

**When you enrolled in this CEGEP program, did you have objectives related to a current or future job or did you enroll only for personal interest?**

1. Current or future job
2. Personal interest
8. Refuse
9. Don't know

If answered "Current or future job"

go to ED\_Q109

Otherwise

go to ED\_Q110

ED\_Q109: **Was it to...**

INTERVIEWER: Mark all that apply.

01. **Prepare for a first career?**
02. **Increase income?**
03. **Avoid losing a current job?**

- 04. **Get a promotion?**
- 05. **Do a current job better?**
- 06. **Start own business?**
- 07. **Help find or change a job?**
- 08. Other
- 98. Refuse
- 99. Don't know

go to ED\_Q110

ED\_Q110: **What was the major field of study or specialization?**

Maximum: 48 characters

go to ED\_C117

ED\_C117: If a job was reported in Dates (DA\_Q005 = Yes or DA\_Q010 = Yes or DA\_Q015 = Yes or DA\_Q025 = Yes or DA\_Q040 <> empty), go to ED\_Q117  
Otherwise, go to ED\_Q118

?ED\_Q117: **Did an employer provide any support while he was attending this CEGEP? For example by providing or paying for the training, allowing a flexible work schedule, providing transportation or any other type of support?**

**Did an employer provide any support while she was attending this CEGEP? For example by providing or paying for the training, allowing a flexible work schedule, providing transportation or any other type of support?**

**Did an employer provide any support while you were attending this CEGEP? For example by providing or paying for the training, allowing a flexible work schedule, providing transportation or any other type of support?**

- 1. Yes
- 2. No
- 8. Refuse
- 9. Don't know

go to ED\_Q118

ED\_Q118: **Did he receive any certificates or diplomas from this CEGEP in [reference year]?**

**Did she receive any certificates or diplomas from this CEGEP in [reference year]?**

**Did you receive any certificates or diplomas from this CEGEP in [reference year]?**

**INTERVIEWER:** Only include certificates, diplomas or degrees from a recognized institution that resulted in graduation from a program. Do not include certificates, diplomas from single courses.

1. Yes
2. No
8. Refuse
9. Don't know

If Yes go to ED\_Q119  
Otherwise go to next of ED\_Q130 or Q150 depending on answer(s) marked in ED\_Q020

**ED\_Q119: In which province or territory did he receive this diploma?**

**In which province or territory did she receive this diploma?**

**In which province or territory did you receive this diploma?**

- |                               |                                  |
|-------------------------------|----------------------------------|
| 10. Newfoundland and Labrador | 59. British Columbia             |
| 11. Prince Edward Island      | 60. Yukon                        |
| 12. Nova Scotia               | 61. Northwest Territories        |
| 13. New Brunswick             | 62. Nunavut                      |
| 24. Quebec                    | 76. U.S.A.                       |
| 35. Ontario                   | 77. Outside of Canada and U.S.A. |
| 46. Manitoba                  | 98. Refuse                       |
| 47. Saskatchewan              | 99. Don't know                   |
| 48. Alberta                   |                                  |

go to ED\_Q120

**?ED\_Q120: Overall, how long did it take him to complete this program?**

**Overall, how long did it take her to complete this program?**

**Overall, how long did it take you to complete this program?**

1. Answer given in months
2. Answer given in years



go to ED\_Q133

?ED\_Q133: **On average, how many hours per week did he attend this university?**

**On average, how many hours per week did she attend this university?**

**On average, how many hours per week did you attend this university?**

INTERVIEWER: If respondent not sure, probe for best estimate

Hard range: minimum: 1.00  
maximum: 168.00

Soft range: maximum: 50.00

go to ED\_Q134

ED\_Q134: **Was he considered a full-time or a part-time student?**

**Was she considered a full-time or a part-time student?**

**Were you considered a full-time or a part-time student?**

1. Full time
2. Part time
3. Some of each
8. Refuse
9. Don't know

go to ED\_Q135

ED\_Q135: **During [reference year], what was the highest university level he was enrolled in?**

**During [reference year], what was the highest university level she was enrolled in?**

**During [reference year], what was the highest university level you were enrolled in?**

1. University certificate/diploma below bachelor degree
2. Bachelor's degree(s) (e.g. B.A., B.Sc., B.Ed., B.Eng.)
3. University certificate/diploma above bachelor level but

- below master level (e.g. honours or specialization)
- 4. First professional degree in law, dentistry, veterinary medicine, optometry
- 5. Master's degree(s) (e.g. M.A., M.Sc., M.Ed., M.B.A., M.Eng.)
- 6. Ph.D. degree (e.g. Doctorate, D.Sc., D.Ed.)
- 8. Refuse
- 9. Don't know

go to ED\_Q138

?ED\_Q138: **When he enrolled in this university program, did he have objectives related to a current or future job or did he enroll only for personal interest?**

**When she enrolled in this university program, did she have objectives related to a current or future job or did she enroll only for personal interest?**

**When you enrolled in this university program, did you have objectives related to a current or future job or did you enroll only for personal interest?**

- 1. Current or future job
- 2. Personal interest
- 8. Refuse
- 9. Don't know

If answered "Current or future job"

go to ED\_Q139

Otherwise

go to ED\_Q140

ED\_Q139: **Was it to...**

INTERVIEWER: Mark all that apply.

- 01. **Prepare for a first career?**
- 02. **Increase income?**
- 03. **Avoid losing a current job?**
- 04. **Get a promotion?**
- 05. **Do a current job better?**
- 06. **Start own business?**
- 07. **Help find or change a job?**
- 08. Other
- 98. Refuse
- 99. Don't know

go to ED\_Q140

ED\_Q140: **What was the major field of study or specialization?**

Maximum: 48 characters

go to ED\_C143

ED\_C143: If a job was reported in Dates (DA\_Q005 = Yes or DA\_Q010 = Yes or DA\_Q015 = Yes or DA\_Q025 = Yes or DA\_Q040 <> empty), go to ED\_Q143

Otherwise, go to ED\_Q144

?ED\_Q143: **Did an employer provide any support while he was attending university? For example by providing or paying for the training, allowing a flexible work schedule, providing transportation or any other type of support.**

**Did an employer provide any support while she was attending university? For example by providing or paying for the training, allowing a flexible work schedule, providing transportation or any other type of support?**

**Did an employer provide any support while you were attending university? For example by providing or paying for the training, allowing a flexible work schedule, providing transportation or any other type of support?**

1. Yes
2. No
8. Refuse
9. Don't know

go to ED\_Q144

ED\_Q144: **Did he graduate from this university program in [reference year]?**

**Did she graduate from this university program in [reference year]?**

**Did you graduate from this university program in [reference year]?**

INTERVIEWER: Only include certificates, diplomas or degrees from a recognized institution that resulted in

graduation from a program. Do not include certificates, diplomas from single courses.

1. Yes
2. No
8. Refuse
9. Don't know

If Yes go to ED\_Q145  
Otherwise go to ED\_Q150

ED\_Q145: **In which province or territory did he receive his university degree?**

**In which province or territory did she receive her university degree?**

**In which province or territory did you receive your university degree?**

- |                               |                                  |
|-------------------------------|----------------------------------|
| 10. Newfoundland and Labrador | 59. British Columbia             |
| 11. Prince Edward Island      | 60. Yukon                        |
| 12. Nova Scotia               | 61. Northwest Territories        |
| 13. New Brunswick             | 62. Nunavut                      |
| 24. Quebec                    | 76. U.S.A.                       |
| 35. Ontario                   | 77. Outside of Canada and U.S.A. |
| 46. Manitoba                  | 98. Refuse                       |
| 47. Saskatchewan              | 99. Don't know                   |
| 48. Alberta                   |                                  |

go to ED\_Q146

ED\_Q146: **Overall, how long did it take him to complete this program?**

**Overall, how long did it take her to complete this program?**

**Overall, how long did it take you to complete this program?**

1. Answer given in months
2. Answer given in years
8. Refuse
9. Don't know

If Answer given in months go to ED\_N147  
If Answer given in years go to ED\_N148  
Otherwise go to ED\_Q150

ED\_N147: INTERVIEWER: Enter the number of months it took to complete this program

Hard range: minimum: 1  
maximum: 95

go to ED\_Q150

ED\_N148: INTERVIEWER: Enter the number of years it took to complete this program

Hard range: minimum: 1  
maximum: 15

go to ED\_Q150

ED\_Q150: **Did he receive any other degrees, certificates or diplomas in [reference year]?**

**Did she receive any other degrees, certificates or diplomas in [reference year]?**

**Did you receive any other degrees, certificates or diplomas in [reference year]?**

INTERVIEWER: Only include certificates, diplomas or degrees from a recognized institution that resulted in graduation from a program. Do not include certificates, diplomas from single courses.

1. Yes
2. No
8. Refuse
9. Don't know

If Yes go to ED\_Q155  
Otherwise go to ED\_C195

?ED\_Q155: **From what kind of institution did he receive this diploma in [reference year]? Was it a . . .**

**From what kind of institution did she receive this diploma in [reference year]? Was it a . . .**

**From what kind of institution did you receive this diploma in [reference year]? Was it a . . .**

- |    |  |               |
|----|--|---------------|
| 1. | <b>High school or adult education at the high school level</b>       | go to ED_Q156 |
| 2. | <b>Community college or institute of applied arts and technology</b> | go to ED_Q162 |
| 3. | <b>Business or commercial school</b>                                 | go to ED_Q162 |
| 4. | <b>Apprenticeship program, trade or vocational school</b>            | go to ED_Q157 |
| 5. | <b>CEGEP</b>   | go to ED_Q162 |
| 6. | <b>University</b>  | go to ED_Q160 |
| 8. | Refuse   | go to ED_C195 |
| 9. | Don't know   | go to ED_C195 |

ED\_Q156: **In which province or territory did he receive this high school diploma?**

**In which province or territory did she receive this high school diploma?**

**In which province or territory did you receive this high school diploma?**

- |     |                           |     |                              |
|-----|---------------------------|-----|------------------------------|
| 10. | Newfoundland and Labrador | 59. | British Columbia             |
| 11. | Prince Edward Island      | 60. | Yukon                        |
| 12. | Nova Scotia               | 61. | Northwest Territories        |
| 13. | New Brunswick             | 62. | Nunavut                      |
| 24. | Quebec                    | 76. | U.S.A.                       |
| 35. | Ontario                   | 77. | Outside of Canada and U.S.A. |
| 45. | Manitoba                  | 98. | Refuse                       |
| 47. | Saskatchewan              | 99. | Don't know                   |
| 48. | Alberta                   |     |                              |

go to ED\_C163

ED\_Q157: **In which province or territory did he receive this apprenticeship, trade or vocational diploma?**

**In which province or territory did she receive this apprenticeship, trade or vocational diploma?**

**In which province or territory did you receive this apprenticeship, trade or vocational diploma?**

- |     |                           |     |                  |
|-----|---------------------------|-----|------------------|
| 10. | Newfoundland and Labrador | 59. | British Columbia |
|-----|---------------------------|-----|------------------|

- |                          |                                     |
|--------------------------|-------------------------------------|
| 11. Prince Edward Island | 60. Yukon                           |
| 12. Nova Scotia          | 61. Northwest Territories           |
| 13. New Brunswick        | 62. Nunavut                         |
| 24. Quebec               | 76. U.S.A.                          |
| 35. Ontario              | 77. Outside of Canada<br>and U.S.A. |
| 46. Manitoba             | 98. Refuse                          |
| 47. Saskatchewan         | 99. Don't know                      |
| 48. Alberta              |                                     |

go to ED\_Q158

ED\_Q158: **Was it a registered apprenticeship program diploma?**

1. Yes
2. No
8. Refuse
9. Don't know

go to ED\_Q163

ED\_Q160: **What degree, certificate or diploma did he receive in [reference year]?**

**What degree, certificate or diploma did she receive in [reference year]?**

**What degree, certificate or diploma did you receive in [reference year]?**

1. University certificate/diploma below bachelor degree
2. Bachelor's degree(s) (e.g. B.A., B.Sc., B.Ed., B.Eng.)
3. University certificate/diploma above bachelor level but below master level (e.g. honours or specialization)
4. First professional degree in law, dentistry, veterinary medicine, optometry
5. Master's degree(s) (e.g. M.A., M.Sc., M.Ed., M.B.A., M.Eng.)
6. Ph.D. degree (e.g. Doctorate, D.Sc., D.Ed.)
8. Refuse
9. Don't know

go to ED\_Q161

ED\_Q161: **In which province or territory did he receive this university degree?**

**In which province or territory did she receive this university degree?**

**In which province or territory did you receive this university degree?**

- |     |                           |     |                              |
|-----|---------------------------|-----|------------------------------|
| 10. | Newfoundland and Labrador | 59. | British Columbia             |
| 11. | Prince Edward Island      | 60. | Yukon                        |
| 12. | Nova Scotia               | 61. | Northwest Territories        |
| 13. | New Brunswick             | 62. | Nunavut                      |
| 24. | Quebec                    | 76. | U.S.A.                       |
| 35. | Ontario                   | 77. | Outside of Canada and U.S.A. |
| 46. | Manitoba                  | 98. | Refuse                       |
| 47. | Saskatchewan              | 99. | Don't know                   |
| 48. | Alberta                   |     |                              |

go to ED\_Q163

ED\_Q162: **In which province or territory did he receive this diploma?**

**In which province or territory did she receive this diploma?**

**In which province or territory did you receive this diploma?**

- |     |                           |     |                              |
|-----|---------------------------|-----|------------------------------|
| 10. | Newfoundland and Labrador | 59. | British Columbia             |
| 11. | Prince Edward Island      | 60. | Yukon                        |
| 12. | Nova Scotia               | 61. | Northwest Territories        |
| 13. | New Brunswick             | 62. | Nunavut                      |
| 24. | Quebec                    | 76. | U.S.A.                       |
| 35. | Ontario                   | 77. | Outside of Canada and U.S.A. |
| 46. | Manitoba                  | 98. | Refuse                       |
| 47. | Saskatchewan              | 99. | Don't know                   |
| 48. | Alberta                   |     |                              |

go to ED\_Q163

ED\_C163: If age > 19, go to ED\_Q163  
Otherwise, go to ED\_C195

?ED\_Q163: **When he enrolled in this program, did he have objectives related to a current or future job or did he enroll only for personal interest?**

**When she enrolled in this program, did she have objectives related to a current or future job or did she enroll only for personal interest?**

**When you enrolled in this program, did you have objectives related to a current or future job or did you enroll only for personal interest?**

1. Current or future job
2. Personal interest
8. Refuse
9. Don't know

If answered "Current or future job" go to ED\_Q164

Otherwise go to ED\_C165

ED\_Q164: **Was it to...**

INTERVIEWER: Mark all that apply.

01. **Prepare for a first career?**
02. **Increase income?**
03. **Avoid losing a current job?**
04. **Get a promotion?**
05. **Do a current job better?**
06. **Start own business?**
07. **Help find or change a job?**
08. Other
98. Refuse
99. Don't know

go to ED\_C165

ED\_C165: If ED\_Q155 = 1 "High school" or  
if ED\_Q190 = 1 "High school"

go to ED\_C172

Otherwise

go to ED\_Q165

ED\_Q165: **What was the major field of study or specialization?**

Maximum: 48 characters

go to ED\_C172

ED\_C172: If a job was reported in Dates (DA\_Q005 = Yes or DA\_Q010 = Yes or DA\_Q015 = Yes or DA\_Q025 = Yes or DA\_Q040 <> empty), go to ED\_Q172  
Otherwise, go to ED\_Q175

?ED\_Q172: **Did an employer provide any support while he was attending this program? For example by providing or paying for the training, allowing a flexible work schedule, providing transportation or any other type of support?**

**Did an employer provide any support while she was attending this program? For example by providing or paying for the training, allowing a flexible work schedule, providing transportation or any other type of support?**

**Did an employer provide any support while you were attending this program? For example by providing or paying for the training, allowing a flexible work schedule, providing transportation or any other type of support?**

1. Yes
2. No
8. Refuse
9. Don't know

If ED\_Q155 = 1 "High school" or  
if ED\_Q190 = 1 "High school" go to ED\_C195  
Otherwise go to ED\_Q175

ED\_Q175: **Overall, how long did it take him to complete this program?**

**Overall, how long did it take her to complete this program?**

**Overall, how long did it take you to complete this program?**

1. Answer given in months
2. Answer given in years
8. Refuse
9. Don't know

If Answer given in months go to ED\_N175  
If Answer given in years go to ED\_N180  
Otherwise go to ED\_Q182

ED\_N175: **INTERVIEWER:** Enter the number of months it took to complete this program

Hard range: minimum: 1  
maximum: 95

go to ED\_Q182

ED\_N180: **INTERVIEWER:** Enter the number of years it took to complete this program

Hard range: minimum: 1  
maximum: 7

go to ED\_Q182

ED\_Q182: **Was this full time, part time or some of each?**

1. Full time
2. Part time
3. Some of each
8. Refuse
9. Don't know

go to ED\_C195

ED\_Q185: **Did he receive a degree, certificate or diploma between January and December, [reference year]?**

**Did she receive a degree, certificate or diploma between January and December, [reference year]?**

**Did you receive a degree, certificate or diploma between January and December, [reference year]?**

**INTERVIEWER:** Only include certificates, diplomas or degrees from a recognized institution that resulted in graduation from a program. Do not include certificates, diplomas from single courses.

1. Yes
2. No
8. Refuse
9. Don't know

If Yes go to ED\_Q190

Otherwise go to ED\_C195

?ED\_Q190: **From what kind of institution did he receive this diploma?  
Was it a . . .**

**From what kind of institution did she receive this diploma?  
Was it a . . .**

**From what kind of institution did you receive this diploma?  
Was it a . . .**

1. **High school or adult education  
at the high school level** go to ED\_Q156
2. **Community college or institute  
of applied arts and technology** go to ED\_Q162
3. **Business or commercial school** go to ED\_Q162
4. **Apprenticeship program, trade  
or vocational school** go to ED\_Q157
5. **CEGEP** go to ED\_Q162
6. **University** go to ED\_Q160
8. **Refuse** go to ED\_C195
9. **Don't know** go to ED\_C195

ED\_C195: If Prflg59 = 1, go to EP\_R001  
If Prflg59 = 2, go to ED\_C200

#### 6.6.1 EP Module

?EP\_R001: **The next set of questions will be about educational  
background.**

INTERVIEWER: Press <Enter> to continue.

go to EP\_Q001

?EP\_Q001: **How many years of elementary and high school did  
[respondent] complete, not including kindergarten?**

**How many years of elementary and high school did  
[respondent] complete, not including kindergarten?**

**How many years of elementary and high school did [you]  
complete, not including kindergarten?**

Hard range: minimum: 0  
maximum: 15

If Refuse/Don't know go to EP\_Q095  
Otherwise go to EP\_C001

EP\_C001: Is the number of years of schooling (EP\_Q001) less than ([age]  
minus 5)?

If No go to EP\_E001  
 If answered 0 or 1 go to EP\_Q095  
 If Yes go to EP\_Q005

EP\_E001: Years of schooling appears high for respondent's age. Is this correct?

EP\_Q005: **In which province or territory did he receive most of his elementary and high school education?**

**In which province or territory did she receive most of her elementary and high school education?**

**In which province or territory did you receive most of your elementary and high school education?**

- |     |                           |     |                              |
|-----|---------------------------|-----|------------------------------|
| 10. | Newfoundland and Labrador | 59. | British Columbia             |
| 11. | Prince Edward Island      | 60. | Yukon                        |
| 12. | Nova Scotia               | 61. | Northwest Territories        |
| 13. | New Brunswick             | 62. | Nunavut                      |
| 24. | Quebec                    | 76. | U.S.A.                       |
| 35. | Ontario                   | 77. | Outside of Canada and U.S.A. |
| 46. | Manitoba                  | 98. | Refuse                       |
| 47. | Saskatchewan              | 99. | Don't know                   |
| 48. | Alberta                   |     |                              |

go to EP\_C003

EP\_C003: Is ED\_Q155 = 2 or 3 or 4 or 5?

Yes go to EP\_C060  
 No go to EP\_C005

EP\_C005: Is (EP\_Q001 = 1 to 9) or (ED\_Q020 = 1) or (ED\_Q155 = 1) or (ED\_Q190 = 1)?

Yes go to EP\_C008  
 No go to EP\_Q010

EP\_C008: Is age > 19?

Yes go to EP\_Q020  
 No go to EP\_C060

EP\_Q010: **Did he complete high school?**

**Did she complete high school?**

**Did you complete high school?**

1. Yes
2. No
8. Refuse
9. Don't know

If No go to EP\_Q015  
Otherwise go to EP\_C010

EP\_C010: Is ED\_Q190 = 2 or 3 or 4 or 5?

Yes go to EP\_C060  
No go to EP\_Q020

EP\_Q015: **What is the main reason he did not complete high school?**

**What is the main reason she did not complete high school?**

**What is the main reason you did not complete high school?**

01. Still attending school
02. No main reason
03. Bored with school
04. Problems with school work
05. Teacher problems
06. Bad results at school
07. Expelled from school
08. Skipped classes
09. Pregnancy/take care of children
10. Marriage
11. Lack of time
12. Problems at home
13. Drug and alcohol problems
14. To help at home
15. Own illness, disability or accident
16. Had to work/financial reasons
17. Preferred work to school
18. Other reasons
98. Refuse
99. Don't know

go to EP\_C015

EP\_C015: Is ED\_Q190 = 2 or 3 or 4 or 5?

Yes go to EP\_C060  
No go to EP\_C020

EP\_C020: Is age > 19?

Yes go to EP\_Q020  
No go to EP\_C060

?EP\_Q020: **Excluding any programs already reported and not counting university, [has] [he] ever been enrolled in any other kind of school / Not counting university, [has] [he] ever been enrolled in any kind of school] like a college, business or trade school or CEGEP?**

**Excluding any programs already reported and not counting university, [has] [she] ever been enrolled in any other kind of school / Not counting university, [has] [she] ever been enrolled in any kind of school] like a college, business or trade school or CEGEP?**

**Excluding any programs already reported and not counting university, [have] [you] ever been enrolled in any other kind of school / Not counting university, [have] [you] ever been enrolled in any kind of school] like a college, business or trade school or CEGEP?**

INTERVIEWER: Include attendance at a post-secondary institution if courses taken can be used as recognized credits towards a certificate, diploma or degree. Do not include courses taken for leisure, recreation or personal interest.

If (ED\_Q020 = 2 or 3 or 4 or 5) or (ED\_Q190 = 2 or 3 or 4 or 5) prefill the question text with "Excluding any program already reported and not counting university, has...".  
Otherwise, prefill the question text with "Not counting university, has...".

1. Yes
2. No
8. Refuse
9. Don't know

If Yes go to EP\_Q025  
Otherwise go to EP\_C060

EP\_Q025: **Has he received any certificates or diplomas as a result of this education?**

**Has she received any certificates or diplomas as a result of this education?**

**Have you received any certificates or diplomas as a result of this education?**

INTERVIEWER: Only include certificates, diplomas or degrees from a recognized institution that resulted in graduation from a program. Do not include certificates, diplomas from single courses.

1. Yes
2. No
8. Refuse
9. Don't know

If Yes go to EP\_Q030  
Otherwise go to EP\_C060

?EP\_Q030: **Thinking of the most recent certificate or diploma (not counting university) could you tell me what type of school or college he attended? Was it a:**

**Thinking of the most recent certificate or diploma (not counting university) could you tell me what type of school or college she attended? Was it a:**

**Thinking of the most recent certificate or diploma (not counting university) could you tell me what type of school or college you attended? Was it a:**

1. **Community college or institute of applied arts and technology?**
2. **Business or commercial school**
3. **Apprenticeship program, trade or vocational school?**
4. **CEGEP?**
5. Other (specify)
8. Refuse
9. Don't know

If answered "Other" go to EP\_S030  
Otherwise go to EP\_Q033

EP\_S030: INTERVIEWER: Specify

Maximum: 80 characters

go to EP\_Q033

Header: Type of school response from EP\_Q030 is displayed from question EP\_Q033 to EP\_Q050

EP\_Q033: **In which province or territory did he receive this diploma?**

**In which province or territory did she receive this diploma?**

**In which province or territory did you receive this diploma?**

- |                               |                                  |
|-------------------------------|----------------------------------|
| 10. Newfoundland and Labrador | 59. British Columbia             |
| 11. Prince Edward Island      | 60. Yukon                        |
| 12. Nova Scotia               | 61. Northwest Territories        |
| 13. New Brunswick             | 62. Nunavut                      |
| 24. Quebec                    | 76. U.S.A.                       |
| 35. Ontario                   | 77. Outside of Canada and U.S.A. |
| 46. Manitoba                  | 98. Refuse                       |
| 47. Saskatchewan              | 99. Don't know                   |
| 48. Alberta                   |                                  |

go to EP\_Q035

EP\_Q035: **How long did it take him to complete this program?**

**How long did it take her to complete this program?**

**How long did it take you to complete this program?**

- |                           |               |
|---------------------------|---------------|
| 1. Answer given in months | go to EP_N035 |
| 2. Answer given in years  | go to EP_N040 |
| 8. Refuse                 | go to EP_Q040 |
| 9. Don't know             | go to EP_Q040 |

EP\_N035: INTERVIEWER: Enter number of months it took to complete this program.

Hard range: minimum: 1  
maximum: 95

go to EP\_Q040

EP\_N040: INTERVIEWER: Enter number of years it took to complete this program.

Hard range: minimum: 1  
maximum: 7

go to EP\_Q040

EP\_Q040: **Was this full time, part time or some of each?**

1. Full time
2. Part time
3. Some of each
8. Refuse
9. Don't know

EP\_Q045: **In what year did he receive his certificate or diploma?**

**In what year did she receive her certificate or diploma?**

**In what year did you receive your certificate or diploma?**

Hard range: minimum: [reference year] minus ([age] - 14)  
(14 years old)  
maximum: [current year]

If Refuse/Don't know go to EP\_Q047  
Otherwise go to EP\_C045

EP\_C045: Is year received diploma less than ([current year] minus ([age] - 18))?

Yes go to EP\_E045  
No go to EP\_Q047

EP\_E045: Certificate or diploma was received when less than 19 years of age. Is this correct?

If correct (edit suppressed), go to EP\_Q050  
If not correct, return to EP\_Q045

EP\_Q047: **When he enrolled in this program, did he have objectives related to a current or future job or did he enroll only for personal interest?**

**When she enrolled in this program, did she have objectives related to a current or future job or did she enroll only for personal interest?**

**When you enrolled in this program, did you have objectives related to a current or future job or did you enroll only for personal interest?**

1. Current or future job
2. Personal interest
8. Refuse
9. Don't know

If answered "Current or future job" go to EP\_Q048  
Otherwise go to EP\_Q050

EP\_Q048: **Was it to...**

INTERVIEWER: Mark all that apply.

01. Prepare for a first career?
02. Increase income?
03. Avoid losing a current job?
04. Get a promotion?
05. Do a current job better?
06. Start own business?
07. Help find or change a job?
08. Other
98. Refuse
99. Don't know

go to EP\_Q050

?EP\_Q050: **What was the major field of study or specialization?**

Maximum: 50 characters

go to EP\_C060

EP\_C060: If attended or received diploma from University (ED\_Q020 = 6) or (ED\_Q155 = 6) or (ED\_Q190 = 6), go to EP\_Q060  
Otherwise, go to EP\_Q065

EP\_Q060: **Excluding any university programs already reported, has he been enrolled in any other university program?**

**Excluding any university programs already reported, has she been enrolled in any other university program?**

**Excluding any university programs already reported, have you been enrolled in any other university program?**

1. Yes
2. No
8. Refuse
9. Don't know

If Yes go to EP\_Q070  
Otherwise go to EP\_Q095

EP\_Q065: **Has he ever been enrolled in a university?**

**Has she ever been enrolled in a university?**

**Have you ever been enrolled in a university?**

INTERVIEWER: Include attendance at the university if the courses taken can be used as recognized credits towards a certificate, diploma or degree. Do not include courses taken for leisure, recreation or personal interest.

1. Yes
2. No
8. Refuse
9. Don't know

If Yes go to EP\_Q070  
Otherwise go to EP\_Q095

EP\_Q070: **[Excluding any university programs already reported, how / How] many years of university has he completed?**

**[Excluding any university programs already reported, how / How] many years of university has she completed?**

**[Excluding any university programs already reported, how / How] many years of university have you completed?**

INTERVIEWER: Enter 0 if attended university less than one year

If enrolled in another university program (EP\_Q060 = Yes), prefill the question text with "Excluding any university program already reported, how".

Otherwise, prefill the question text with "How".

Hard range: minimum: 0  
maximum: 20

If 0 or Refuse/Don't know go to EP\_Q095  
Otherwise go to EP\_C070

EP\_C070: Is years of university greater than ([age] - 14)? (15 years old)

Yes go to EP\_E070  
No go to EP\_Q072

EP\_E070: Attended university before age 14. Is this correct?

If correct (edit suppressed), go to EP\_Q072  
If not correct, go back to EP\_Q070

EP\_Q072: **Was this full time, part time or some of each?**

1. Full time
2. Part time
3. Some of each
8. Refuse
9. Don't know

go to EP\_Q075

EP\_Q075: **[Excluding any university degrees already reported, what / What] degrees, certificates or diplomas has he received from a university?**

**[Excluding any university degrees already reported, what / What] degrees, certificates or diplomas has she received from a university?**

**[Excluding any university degrees already reported, what / What] degrees, certificates or diplomas have you received from a university?**

**INTERVIEWER:** Only include certificates, diplomas or degrees from a recognized institution that resulted in graduation from a program. Do not include certificates, diplomas from single courses.

If attended university or received a university degree (ED\_Q020 = 6) or (ED\_Q155 = 6) or (ED\_Q190 = 6), prefill the question text with "Excluding any university degrees already reported, what". Otherwise, prefill the question text with "What".

1. None
2. Specify degrees
8. Refuse
9. Don't know

If "Specify degrees" go to EP\_N075  
Otherwise go to EP\_Q095

EP\_N075: **INTERVIEWER:** Specify degrees, certificates or diplomas he/she has received from a university. Mark all that apply

01. University certificate/diploma below bachelor degree
02. Bachelor's degree(s) (e.g. B.A., B.Sc., B.Ed., B.Eng.)
03. University certificate/diploma above bachelor level but below master level (e.g. honours or specialization)
04. First professional degree in law, dentistry, veterinary medicine, optometry
05. Master's degree(s) (e.g. M.A., M.Sc., M.Ed., M.B.A., M.Eng.)
06. Ph.D. degree (e.g. Doctorate, D.Sc., D.Ed.)
98. Refuse
99. Don't know

If Refuse/Don't know go to EP\_Q095  
Otherwise go to EP\_Q080

EP\_Q080: **In what year did he receive his [highest response category given in EP\_N075]?**

**In what year did she receive her [highest response category given in EP\_N075]?**

**In what year did you receive your [highest response category given in EP\_N075]?**

Hard range: minimum: [reference year] minus ([age] - 18)  
(17 years old)  
maximum: [current year]

go to EP\_C080

EP\_C080: Is year received diploma less than ([current year] minus ([age] - 18))?

Yes go to EP\_E080

No go to EP\_Q081

EP\_E080: Certificate or diploma was received when less than 18 years of age. Is this correct?

If correct (edit suppressed), go to EP\_Q081

If not correct, go back to EP\_Q080

Header: Highest degree, certificate or diploma from EP\_N075 (is displayed from EP\_Q081 to EP\_Q090)

EP\_Q081: **In which province or territory did he receive this degree?**

**In which province or territory did she receive this degree?**

**In which province or territory did you receive this degree?**

- |                               |                                  |
|-------------------------------|----------------------------------|
| 10. Newfoundland and Labrador | 59. British Columbia             |
| 11. Prince Edward Island      | 60. Yukon                        |
| 12. Nova Scotia               | 61. Northwest Territories        |
| 13. New Brunswick             | 62. Nunavut                      |
| 24. Quebec                    | 76. U.S.A.                       |
| 35. Ontario                   | 77. Outside of Canada and U.S.A. |
| 46. Manitoba                  | 98. Refuse                       |
| 47. Saskatchewan              | 99. Don't know                   |
| 48. Alberta                   |                                  |

go to EP\_Q083

EP\_Q083: **When he enrolled in this program, did he have objectives related to a current or future job or did he enroll only for personal interest?**

**When she enrolled in this program, did she have objectives related to a current or future job or did she enroll only for personal interest?**

**When you enrolled in this program, did you have objectives related to a current or future job or did you enroll only for personal interest?**

1. Current or future job
2. Personal interest
8. Refuse
9. Don't know

If answered "Current or future job/career" go to EP\_Q085  
Otherwise go to EP\_Q090

EP\_Q085: **Was it to...**

INTERVIEWER: Mark all that apply.

01. **Prepare for a first career?**
02. **Increase income?**
03. **Avoid losing a current job?**
04. **Get a promotion?**
05. **Do a current job better?**
06. **Start own business?**
07. **Help find or change a job?**
08. Other
98. Refuse
99. Don't know

go to EP\_Q090

EP\_Q090: **What was the major field of study or specialization?**

Maximum: 50 characters

go to EP\_Q095

?EP\_Q095: **I would like to ask about the education of his parents. What was the highest level of education his mother completed?**

**I would like to ask about the education of her parents. What was the highest level of education her mother completed?**

**I would like to ask about the education of your parents. What was the highest level of education your mother completed?**

INTERVIEWER: If respondent answers "Don't know", probe for a response by reading the categories listed below.

01. Elementary school (includes no schooling)
02. Some high school
03. Completed high school
04. Non-university certificate or diploma (e.g. college, CEGEP, etc.)
05. Bachelor's degree
06. University degree above bachelor's (e.g. M.A., PhD, medical degree)
98. Refuse
99. Don't know

EP\_Q100: **What was the highest level of education his father completed?**

**What was the highest level of education her father completed?**

**What was the highest level of education your father completed?**

INTERVIEWER: If respondent answers "Don't know", probe for a response by reading the categories listed below.

01. Elementary school (includes no schooling)
02. Some high school
03. Completed high school
04. Non-university certificate or diploma (e.g. college, CEGEP, etc.)
05. Bachelor's degree
06. University degree above bachelor's (e.g. M.A., PhD, medical degree)
98. Refuse
99. Don't know

go to ED\_C200

ED\_C200: If Hhinfo.Age59 > 45, go to ED\_C300  
Otherwise, go to ED\_C201

ED\_C201: If EP\_Q020 or EP\_Q065 = Yes, go to ED\_Q200

Otherwise, go to ED\_C220

ED\_Q200: **Has [fname] ever received a student loan?**

**Has [fname] ever received a student loan?**

**Have [you] ever received a student loan?**

**INTERVIEWER:** Only include government loans or loans from a bank.

1. Yes
2. No
8. Refuse
9. Don't know

If Yes go to ED\_Q205  
Otherwise go to ED\_C300

ED\_Q205: **In total, how much was borrowed?**

Hard range: minimum: \$ 1  
maximum: \$ 999995

Soft range: > \$69995

If Refuse/Don't know go to ED\_C300  
Otherwise go to ED\_Q210

ED\_Q210: **How much does he currently owe in student loans?**

**How much does she currently owe in student loans?**

**How much do you currently owe in student loans?**

Hard range: minimum: \$ 0  
maximum: \$999995

Soft range: > \$69995

go to ED\_C300

ED\_C220: If (ED\_Q020 = 2, 3, 4, 5 or 6) or (ED\_Q155 = 2, 3, 4, 5 or 6) or  
ED\_Q190 = 2, 3, 4, 5 or 6), go to ED\_Q220  
Otherwise, go to ED\_C240

ED\_Q220: **Did [fname] receive a student loan in [refyear]?**

**Did [fname] receive a student loan in [refyear]?**

**Did [you] receive a student loan in [refyear]?**

INTERVIEWER: Only include government loans or loans from a bank.

1. Yes
2. No
8. Refuse
9. Don't know

If Yes go to ED\_Q225

Otherwise go to ED\_C240

ED\_Q225: **What was the amount borrowed in [reference year]?**

Hard range: minimum: \$ 0  
maximum: \$99995

Soft range: > \$69995

go to ED\_Q230

ED\_Q230: **In total, how much does he owe for student loans?**

**In total, how much does she owe for student loans?**

**In total, how much do you owe for student loans?**

Hard range: minimum: \$ 0  
maximum: \$99995

Soft range: > \$69995

go to ED\_C300

ED\_C240: If OweFlg59 = 1, go to ED\_Q240

Otherwise, go to ED\_C300

ED\_Q240: **Last year [fname] reported an outstanding amount on a student loan. How much does he currently owe on this loan?**

**Last year [fname] reported an outstanding amount on a student loan. How much does she currently owe on this loan?**

**Last year [you] reported an outstanding amount on a student loan. How much do you currently owe on this loan?**

Hard range: minimum: \$ 0  
maximum: \$999995

Soft range: > \$69995

go to ED\_C300

ED\_C300: If (ED\_Q020 = 1, 2, 3, 4, 5 or 6) or (ED\_Q150 = 1) or (ED\_Q185 = 1), then invoke the second prefill in ED\_Q300 [other than program(s) you have already mentioned];  
Otherwise, do not invoke the second prefill

go to ED\_Q300

?ED\_Q300: **In [reference year], [other than the program(s) you have already mentioned,] did he take any courses, workshops, seminars or training related to a current or future job?**

**In [reference year], [other than the program(s) you have already mentioned,] did she take any courses, workshops, seminars or training related to a current or future job?**

**In [reference year], [other than the program(s) you have already mentioned,] did you take any courses, workshops, seminars or training related to a current or future job?**

1. Yes
2. No
8. Refuse
9. Don't know

If Yes go to ED\_Q305  
Otherwise go to DI\_C001

ED\_Q305: **What was the name or subject of the most important course he took in [reference year]?**

**What was the name or subject of the most important course she took in [reference year]?**

**What was the name or subject of the most important course you took in [reference year]?**

INTERVIEWER: If the respondent has a problem selecting the most important course, ask them to select the one that he or she remembers the most.

Maximum: 80 characters

go to ED\_Q310

ED\_Q310: **What was the main reason for choosing this subject?**

01. **To prepare for a first career?**
02. **To increase income?**
03. **To avoid losing a job?**
04. **To get a promotion?**
05. **To do a current job better?**
06. **To start own business?**
07. **To Help find or change a job?**
08. **Requirement of the job?**
09. **Because of interest in the subject?**
10. Other (specify)
98. Refuse
99. Don't know

If answered "Other (specify)" go to ED\_S310  
Otherwise go to ED\_Q315

ED\_S310: INTERVIEWER: Specify

Maximum: 80 characters

go to ED\_Q315

?ED\_Q315: **During which months in [reference year] did he attend this course?**

**During which months in [reference year] did she attend this course?**

**During which months in [reference year] did you attend this course?**

INTERVIEWER: Select all months that apply

- |              |                |
|--------------|----------------|
| 01. January  | 07. July       |
| 02. February | 08. August     |
| 03. March    | 09. September  |
| 04. April    | 10. October    |
| 05. May      | 11. November   |
| 06. June     | 12. December   |
| 98. Refuse   | 99. Don't know |

go to ED\_Q320

ED\_Q320: **Would it be best to describe the total time he spent in this course in terms of weeks, days or hours?**

**Would it be best to describe the total time she spent in this course in terms of weeks, days or hours?**

**Would it be best to describe the total time you spent in this course in terms of weeks, days or hours?**

- |               |               |
|---------------|---------------|
| 1. Weeks      | go to ED_Q325 |
| 2. Days       | go to ED_Q335 |
| 3. Hours      | go to ED_Q345 |
| 8. Refuse     | go to ED_C350 |
| 9. Don't know | go to ED_C350 |

?ED\_Q325: **In total, how many weeks did he spend in this course in [reference year]?**

**In total, how many weeks did she spend in this course in [reference year]?**

**In total, how many weeks did you spend in this course in [reference year]?**

INTERVIEWER: If respondent not sure, probe for best estimate

Hard range:    minimum:        1.00  
                                  maximum:        52.00

If amount entered > (number  
of months from ED\_Q320 X 5 weeks)        go to ED\_E325  
Otherwise    go to ED\_Q330

ED\_E325: **Based on the months reported in the previous question, the computer has calculated the maximum number of weeks**

possible as [calculation]. Should we review the months reported?

?ED\_Q330: **On average, how many hours per week was that?**

INTERVIEWER: If respondent not sure, probe for best estimate

Hard range:   minimum:       1.00  
                  maximum:       168.00

Soft range:    maximum:       50.00

go to ED\_C350

?ED\_Q335: **In total, how many days did he spend in this course in [reference year]?**

**In total, how many days did she spend in this course in [reference year]?**

**In total, how many days did you spend in this course in [reference year]?**

INTERVIEWER: If respondent not sure, probe for best estimate

Hard range:   minimum:       1.00  
                  maximum:       366.00

go to ED\_Q340

?ED\_Q340: **On average, how many hours per day was that?**

INTERVIEWER: If respondent not sure, probe for best estimate

Hard range:   minimum:       1.00  
                  maximum:       24.00

go to ED\_C350

?ED\_Q345: **In total, how many hours did he spend in this course in [reference year]?**

**In total, how many hours did she spend in this course in [reference year]?**

**In total, how many hours did you spend in this course in [reference year]?**

INTERVIEWER: If respondent not sure, probe for best estimate

Hard range:   minimum:       1.00  
                  maximum:     8760.00

go to ED\_C350

ED\_C350:    If a job was reported in Dates (DA\_Q005 = Yes or DA\_Q010 = Yes or DA\_Q015 = Yes or DA\_Q025 = Yes or DA\_Q040 <> empty), go to ED\_Q350  
Otherwise, go to DI\_C001

?ED\_Q350:   **Did an employer provide any support during this course? For example by providing or paying for the training, allowing a flexible work schedule, providing transportation or any other type of support?**

1.    Yes
2.    No
8.    Refuse
9.    Don't know

go to DI\_C001

## 6.7 DI Module

DI\_C001:    all respondents go to DI\_R001

DI\_R001:    **The next few questions will be about general health.**

INTERVIEWER:   Press <Enter> to continue.

go to DI\_Q005

?DI\_Q005:    **In general, how would you describe [respondent's] state of health? Would you say it is . . .**

**In general, how would you describe, [respondent's] state of health? Would you say it is . . .**

**In general, how would you describe your state of health? Would you say it is . . .**

1.    **Excellent?**
2.    **Very good?**

3. **Good?**
4. **Fair?**
5. **Poor?**
8. Refuse
9. Don't know

If age59 > 69                      go to DI\_Q015  
 Otherwise                            go to DI\_Q010

?DI\_Q010: **Would you describe his life as . . .**

**Would you describe her life as . . .**

**Would you describe your life as . . .**

1. **Very stressful?**
2. **Moderately stressful?**
3. **Rarely stressful?**
4. **Not at all stressful?**
5. No opinion
8. Refuse
9. Don't know

go to DI\_Q015

?DI\_Q015: **Does he have any difficulty hearing, seeing, communicating, walking, climbing stairs, bending, learning or doing any similar activities?**

**Does she have any difficulty hearing, seeing, communicating, walking, climbing stairs, bending, learning or doing any similar activities?**

**Do you have any difficulty hearing, seeing, communicating, walking, climbing stairs, bending, learning or doing any similar activities?**

- |                          |                  |
|--------------------------|------------------|
| 1. <b>Yes, sometimes</b> | set flgdisab = 1 |
| 2. <b>Yes, often</b>     | set flgdisab = 1 |
| 3. <b>No</b>             |                  |
| 8. Refuse                |                  |
| 9. Don't know            |                  |

go to DI\_Q020

?DI\_Q020: **Does a physical condition or mental condition or health problem reduce the amount or the kind of activity he can do at home?**

**Does a physical condition or mental condition or health problem reduce the amount or the kind of activity she can do at home?**

**Does a physical condition or mental condition or health problem reduce the amount or the kind of activity you can do at home?**

1. **Yes, sometimes** set flgdisab = 1
2. **Yes, often** set flgdisab = 1
3. **No**
8. Refuse
9. Don't know

go to DI\_C020

DI\_C020: If age59 > 69 go to DI\_Q033  
If age59 < 70 and respondent  
worked in [reference year]  
(flag: datecntr > 0) go to DI\_Q025  
Otherwise go to DI\_Q030

?DI\_Q025: Does a physical condition or mental condition or health problem reduce the amount or the kind of activity he can do

**... at work?**

Does a physical condition or mental condition or health problem reduce the amount or the kind of activity she can do

**... at work?**

Does a physical condition or mental condition or health problem reduce the amount or the kind of activity you can do

**... at work?**

1. **Yes, sometimes** set flgdisab = 1
2. **Yes, often** set flgdisab = 1
3. **No**
8. Refuse

9. Don't know

go to DI\_Q033

?DI\_Q030: Does a physical condition or mental condition or health problem reduce the amount or the kind of activity he can do

**... at a job or business or at school?**

Does a physical condition or mental condition or health problem reduce the amount or the kind of activity she can do

**... at a job or business or at school?**

Does a physical condition or mental condition or health problem reduce the amount or the kind of activity you can do

**... at a job or business or at school?**

1. **Yes, sometimes** set flgdisab = 1
2. **Yes, often** set flgdisab = 1
3. **No**
8. Refuse
9. Don't know

go to DI\_Q033

?DI\_Q033: Does a physical condition or mental condition or health problem reduce the amount or the kind of activity he can do

**... in other activities, for example, transportation or leisure?**

Does a physical condition or mental condition or health problem reduce the amount or the kind of activity she can do

**... in other activities, for example, transportation or leisure?**

Does a physical condition or mental condition or health problem reduce the amount or the kind of activity you can do

**... in other activities, for example, transportation or leisure?**

1. **Yes, sometimes** set flgdisab = 1
2. **Yes, often** set flgdisab = 1
3. **No**
8. Refuse

9. Don't know

go to DI\_C033

DI\_C033: If flgdisab = 1 go to DI\_Q035  
Otherwise go to IN\_C001

DI\_Q035: **In what year did his condition begin?**

**In what year did her condition begin?**

**In what year did your condition begin?**

INTERVIEWER: Answer should be year the condition started. If more than one condition, indicate the year in which the first condition started

Hard range: minimum: DOB of respondent  
(reference year - age)  
maximum: current year

If age59 < 70 and respondent worked in  
[reference year] (flag: datecstr > 0) go to DI\_Q040  
If age59 is > 69 go to IN\_C001  
Otherwise go to DI\_Q065

DI\_Q040: **Does his condition make it difficult for him to change jobs or to get a better job?**

**Does her condition make it difficult for her to change jobs or to get a better job?**

**Does your condition make it difficult for you to change jobs or to get a better job?**

1. Yes
2. No
8. Refuse
9. Don't know

go to DI\_Q045

DI\_Q045: **Was he satisfied with the number of weeks he worked in [reference year]?**

**Was she satisfied with the number of weeks she worked in [reference year]?**

**Were you satisfied with the number of weeks you worked in [reference year]?**

- |    |            |               |
|----|------------|---------------|
| 1. | Yes        | go to IN_C001 |
| 2. | No         | go to DI_Q050 |
| 8. | Refuse     | go to DI_Q050 |
| 9. | Don't know | go to DI_Q050 |

**DI\_Q050: In [reference year], would he have preferred to work more or less than he did?**

**In [reference year], would she have preferred to work more or less than she did?**

**In [reference year], would you have preferred to work more or less than you did?**

- |    |            |               |
|----|------------|---------------|
| 1. | More       | go to DI_Q055 |
| 2. | Less       | go to DI_Q060 |
| 8. | Refuse     | go to IN_C001 |
| 9. | Don't know | go to IN_C001 |

**DI\_Q055: Was it his condition that prevented him from working more?**

**Was it her condition that prevented her from working more?**

**Was it your condition that prevented you from working more?**

- |    |            |
|----|------------|
| 1. | Yes        |
| 2. | No         |
| 8. | Refuse     |
| 9. | Don't know |

go to IN\_C001

**DI\_Q060: Was it because of his condition that he wanted to work less?**

**Was it because of her condition that she wanted to work less?**

**Was it because of your condition that you wanted to work less?**

- |    |     |
|----|-----|
| 1. | Yes |
| 2. | No  |

8. Refuse
9. Don't know

go to IN\_C001

DI\_Q065: **Does his condition completely prevent him from working at a job or business or from looking for work?**

**Does her condition completely prevent her from working at a job or business or from looking for work?**

**Does your condition completely prevent you from working at a job or business or from looking for work?**

1. Yes
2. No
8. Refuse
9. Don't know

go to or IN\_C001

## 7 Income interview

Taxperm = 0 question was not asked  
 Taxperm = 1 tax permission was given  
 Taxperm = 2 tax permission was refused  
 Taxperm = 3 does not file a tax return  
 Taxperm = 4 tax permission was withdrawn  
 Taxperm = 5 refused income will do labour  
 Taxperm = 9 not eligible (age < 16)

IN\_C001: If hhinfo.taxprm59 = 1 or 5, go to PT\_C001  
 If hhinfo.taxprm59 = 0, 2, 3 or Blank, go to IN\_Q005  
 If hhinfo-taxprm59 = 4, go to IN\_Q015

IN\_Q005: **The next part of this interview asks about different types of income and how much [Respondent] received over the past year, whether from work, retirement, or payments from government. It also asks about reductions to income, such as income tax.**

**In order to increase the accuracy of the data, [he] can give permission for Statistics Canada to access [his] income tax records. The information we obtain would be used for statistical purposes only, and would be kept confidential. No information that could be used to identify [him] will ever be provided to other departments or agencies.**

Do we have [his] permission?

The next part of this interview asks about different types of income and how much [Respondent] received over the past year, whether from work, retirement, or payments from government. It also asks about reductions to income, such as income tax.

In order to increase the accuracy of the data, [she] can give permission for Statistics Canada to access [her] income tax records. The information we obtain would be used for statistical purposes only, and would be kept confidential. No information that could be used to identify [her] will ever be provided to other departments or agencies.

Do we have [her] permission?

The next part of this interview asks about different types of income and how much [you] received over the past year, whether from work, retirement, or payments from government. It also asks about reductions to income, such as income tax.

In order to increase the accuracy of the data, [you] can give permission for Statistics Canada to access [your] income tax records. The information we obtain would be used for statistical purposes only, and would be kept confidential. No information that could be used to identify [you] will ever be provided to other departments or agencies.

Do we have [your] permission?

INTERVIEWER: If necessary, read the following:  
**Statistics Canada would obtain information from: the T1 Income Tax and Benefit Return, the T4 file of records from employers, the child tax benefit file and the GST Credit file.**  
Any personal information we obtain will be kept strictly confidential according to the requirements of the *Statistics Act* -- not only names, but any other facts that could be used to identify a person or family.

- |    |                            |               |
|----|----------------------------|---------------|
| 1. | Yes                        | go to PT_C001 |
| 2. | No                         | go to IN_Q015 |
| 3. | Does not file a tax return | go to IN_Q015 |

This is a mandatory question; 'Refuse' and 'Don't know' are not possible answers.

?IN\_Q015: INCOME FROM EMPLOYMENT

**Now I would like to proceed with the income portion of this survey. During [reference year], what was his income from the following sources?**

**Now I would like to proceed with the income portion of this survey. During [reference year], what was her income from the following sources?**

**Now I would like to proceed with the income portion of this survey. During [reference year], what was your income from the following sources?**

**Wages and salaries from all jobs, before deductions, including tips and commissions.**

INTERVIEWER: Lines 101 and 104 on the tax return.  
An amount must be entered to continue. Enter 0 if respondent did not receive any income from this source.

If 0 is entered but an amount was reported in labour, Wageflag = 1  
(CH\_Q251 = not empty) or (CH\_Q240 = 1 or 2) go to IN\_E015  
Otherwise go to IN\_Q020

Hard range: minimum: 0  
maximum: 99999995

Soft range: minimum: 1,000 (excluding 0)  
maximum: 100,000

IN\_E015: **Based on information provided previously, we expected an amount for wages and salaries. Did we miss it?**

?IN\_Q020: **Farm self-employment net income, including farm program payments and rebates, Canadian wheat board payments, crop insurance, etc.**

INTERVIEWER: Line 141  
An amount must be entered to continue. Enter 0 if respondent did not receive any income from this source.

Hard range: minimum: -9999995  
maximum: 99999995

Soft range: minimum: -5,000  
maximum: 100,000

?IN\_Q025: **Non-farm self-employment net income, including business, professional, commission and fishing net income.**

INTERVIEWER: Lines 122, 135, 137, 139 and 143  
An amount must be entered to continue. Enter 0 if respondent did not receive any income from this source.

Hard range: minimum: -9999995  
maximum: 99999995

Soft range: minimum: -5,000  
maximum: 150,000

?IN\_Q030: INVESTMENT INCOME

**Interest on bank accounts and other deposits, savings certificates, Canada Savings Bonds and other bonds, etc.**

INTERVIEWER: Line 121  
An amount must be entered to continue. Enter 0 if respondent did not receive any income from this source.

Hard range: minimum: 0  
maximum: 99999995

Soft range: minimum: 25 (excluding 0)  
maximum: 50,000

?IN\_Q035: **Dividends (taxable amount)**

INTERVIEWER: Line 120  
An amount must be entered to continue. Enter 0 if respondent did not receive any income from this source.

Hard range: minimum: 0  
maximum: 99999995

Soft range: minimum: 10 (excluding 0)  
maximum: 50,000

?IN\_Q040: **Taxable capital gains**

INTERVIEWER: Line 127  
An amount must be entered to continue. Enter 0 if respondent did not receive any income from this source.

Hard range: minimum: 0  
maximum: 9999995

Soft range: minimum: 25 (excluding 0)  
maximum: 50,000

?IN\_Q045: **Other investment income**

INTERVIEWER: Line 126  
An amount must be entered to continue. Enter 0 if respondent did not receive any income from this source.

Hard range: minimum: -9999995  
maximum: 9999995

Soft range: minimum: -1,000  
maximum: 50,000

?IN\_Q050: **INCOME FROM GOVERNMENT SOURCES**

**Canada Child Tax Benefit and provincial or territorial child tax credits or benefits**

INTERVIEWER: No line exists for this on tax return  
An amount must be entered to continue. Enter 0 if respondent did not receive any income from this source.

Hard range: minimum: 0  
maximum: 9999995

Soft range: minimum: 200 (excluding 0)  
maximum: 14,000 for Quebec  
9,000 for Ontario and BC  
7,000 for rest of Canada

IN\_Q060: **Old Age Security pension, Guaranteed Income Supplement, Spouse's allowance from the federal government**

INTERVIEWER: Exclude provincial supplements (report these with Social assistance, IN\_Q075)  
Lines 113 and 146; OR line 146 only for form T1S-B/T1S-C  
An amount must be entered to continue. Enter 0 if respondent did not receive any income from this source.

Hard range: minimum: 0  
maximum: 99999995

Soft range: minimum: 2,300 (excluding 0)  
maximum: 12,000

If an amount other than 0 is entered and age <60 go to IN\_E060  
If 0 is entered and age >64 go to IN\_E061  
Otherwise go to IN\_Q065

IN\_E060: **Normally this type of income is paid only to persons aged 60 and over. Could this be income from another source?**

IN\_E061: **Normally persons aged 65 or over receive income from the Old Age Security pension. Did we miss it?**

INTERVIEWER: Old Age Security is universal. (But the Guaranteed Income Supplement and Spouse's Allowance are not.)

?IN\_Q065: **Canada or Quebec Pension Plan benefits (CPP/QPP)**

INTERVIEWER: Line 114  
An amount must be entered to continue. Enter 0 if respondent did not receive any income from this source.

Hard range: minimum: 0  
maximum: 99999995

Soft range: minimum: 500 (excluding 0)  
maximum: 15,000

go to IN\_C070

IN\_C070: If CO\_Q010 = 1, go to IN\_Q070  
Otherwise, go to IN\_C075

?IN\_Q070: **Employment Insurance benefits**

INTERVIEWER: Line 119  
An amount must be entered to continue. Enter  
0 if respondent did not receive any income  
from this source.

Hard range: minimum: 0  
maximum: 99999995

Soft range: minimum: 500 (excluding 0)  
maximum: 22,500

If 0 is entered but an amount was reported  
in labour, UIFlg = 1 (CO\_Q010 = 1) go to IN\_E070  
Otherwise go to IN\_C075

IN\_E070: **Based on information provided previously, we expected an  
amount for Employment Insurance benefits. Did we miss it?**

go to IN\_C075

IN\_C075: If age > 69 or CO\_Q040 = 1, go to IN\_Q075  
Otherwise, go to IN\_C080

?IN\_Q075: **Social assistance and other income supplements from  
provincial or municipal sources**

INTERVIEWER: Line 145  
An amount must be entered to continue. Enter  
0 if respondent did not receive any income  
from this source.

Hard range: minimum: 0  
maximum: 99999995

Soft range: minimum: 300 (excluding 0)  
maximum: 25,000

If 0 is entered but an amount was reported  
in labour, SocAs = 1 (CO\_Q040 = 1) go to IN\_E075

Otherwise go to IN\_C080

IN\_E075: **Based on information provided previously, we expected an amount for Social Assistance. Did we miss it?**

go to IN\_C080

IN\_C080: If CO\_Q025 = 1, go to IN\_Q080  
Otherwise, go to IN\_Q085

?IN\_Q080: **Workers' compensation benefits**

INTERVIEWER: Line 144  
An amount must be entered to continue. Enter 0 if respondent did not receive any income from this source.

Hard range: minimum: 0  
maximum: 99999995

Soft range: minimum: 200 (excluding 0)  
maximum: 50,000

If 0 is entered but an amount was reported in labour, WorkComp = 1 (CO\_Q025 = 1) go to IN\_E080  
Otherwise go to IN\_Q085

IN\_E080: **Based on information provided previously, we expected an amount for Workers' compensation benefits. Did we miss it?**

IN\_Q085: **Goods and Services Tax/Harmonized Sales Tax (GST/HST) Credit**

INTERVIEWER: No line exists for this on tax return  
An amount must be entered to continue. Enter 0 if respondent did not receive any income from this source.

Hard range: minimum: 0  
maximum: 99999995

Soft range: minimum: 100 (excluding 0)  
maximum: 1,500

IN\_Q090: **Provincial and territorial tax credits**

INTERVIEWER: Line 479; OR lines 455, 456, 459, 460 and 462 on Quebec tax return  
An amount must be entered to continue. Enter 0 if respondent did not receive any income from this source.

Hard range: minimum: 0  
maximum: 99999995

Soft range: minimum: 25 (excluding 0)  
maximum: 3,000

IN\_Q095: **Veterans' Pensions and Civilian War Pensions and allowances**

INTERVIEWER: No line exists for this on tax return  
An amount must be entered to continue. Enter 0 if respondent did not receive any income from this source.

Hard range: minimum: 0  
maximum: 99999995

Soft range: minimum: 200 (excluding 0)  
maximum: 50,000

?IN\_Q100: **Other income from government sources (Specify)**

INTERVIEWER: Do not include the federal Energy Cost Benefit (it is already taken into account). Residents of Alberta: Do not include the \$400 Alberta Resource Rebate (it is already taken into account).  
An amount must be entered to continue. Enter 0 if respondent did not receive any income from this source.

Hard range: minimum: 0  
maximum: 99999995

Soft range: minimum: 100 (excluding 0)  
maximum: 25,000

IN\_N100: INTERVIEWER: Specify the source

01. Payments for individuals in fishing industry
02. Training allowance from federal or provincial governments



?IN\_Q115: **RRSP withdrawals**

INTERVIEWER: Line 129 if withdrawal and not pension  
An amount must be entered to continue. Enter  
0 if respondent did not receive any income  
from this source.

Hard range: minimum: 0  
maximum: 99999995

Soft range: minimum: 700 (excluding 0)  
maximum: 25,000

?IN\_Q125: **OTHER INCOME**

**Other income** (Specify)

INTERVIEWER: Line 130 plus any additional amounts  
An amount must be entered to continue. Enter  
0 if respondent did not receive any income  
from this source.

Hard range: minimum: 0  
maximum: 99999995

Soft range: minimum: 10 (excluding 0)  
maximum: 25,000

IN\_N125: INTERVIEWER: Specify the source

01. Scholarships, bursaries, fellowships, research grants
02. Settlements of life or other insurance policies
03. Retiring allowance and severance pay received from employer
04. Income from outside Canada (if not already reported)
05. Lottery and gambling winnings
06. Wage loss replacement benefits and income maintenance payments
07. Inheritance
08. Employer or union supplementary unemployment benefits
09. Payments from Children's Aid
10. Interest from loans and mortgages
11. Regular income from an estate or trust fund
12. Other (specify)
98. Refuse

99. Don't know

If response = 12 "Other (specify)" go to IN\_S125  
Otherwise go to IN\_Q140

IN\_S125: INTERVIEWER: Specify

Maximum: 80 characters

go to IN\_Q140

IN\_Q140: Total confirmation

**Based on the amounts reported, [including the amount received for support payments,] the computer has calculated the total income as \$[\*total income as calculated]. Does this sound about right?**

\*[Total income as calculated] is pre-filled with the total of items IN\_Q015 to IN\_Q125 plus SP\_Q005

If "strspnd" set in SP\_Q005, prefill the question text with "including the amount received for support payments,"

1. Yes
2. No
8. Refuse
9. Don't know

If yes go to IN\_Q145  
Otherwise go to IN\_Q141

IN\_Q141: **Can you give an estimate of his total income?**

**Can you give an estimate of her total income?**

**Can you give an estimate of your total income?**

INTERVIEWER: If no income in [reference year], enter 0.

Soft range: maximum 250,000

If entered 0 go to IN\_C150  
If amount entered is different from  
the total calculated by the computer go to IN\_E143  
Otherwise go to IN\_Q145

IN\_E143: **The computer calculated the total as \$[total income as calculated]. Could we review the amounts reported? Perhaps I made a mistake.**

go to IN\_Q145

?IN\_Q145: INCOME TAX

**INCOME TAX PAID on [reference year] income (federal, provincial and territorial)**

INTERVIEWER: All provinces except Quebec: Add lines 420 and 428.  
Quebec residents only: Add together line 420 of federal tax return and line 450 of Quebec tax return. Then subtract lines 445, 446 and 447 of Quebec return.  
If they did not file a return or did not calculate their taxes, ask them to report their best estimate.  
An amount must be entered to continue. Enter 0 if respondent did not pay any income tax.

Hard range: minimum: 0

go to IN\_C150

IN\_C150: If Hhinfo.Age59 > 69 go to PT\_C001  
Otherwise go to IN\_C155

IN\_C155: If FlagJobs = 1 (DA\_Q001 = 1 or DA\_Q005 = 1 or DA\_Q010 = 1 or DA\_Q015 = 1) (job in reference year) go to IN\_C160

Otherwise (no job in reference year) go to PT\_C001

IN\_C160: If flag: PenPlan = 1, contributed to a pension plan (CH\_Q271 = 1) go to IN\_Q160

Otherwise, flag: PenPlan <> 1, did not contribute to a pension plan, or refuse, don't know or not stated in labour interview ((CH\_Q271 = 2) or (CH\_Q271 = empty/DK/RF)) go to IN\_C170

IN\_Q160: **In [reference year], what were his total employer pension plan contributions?**

**In [reference year], what were her total employer pension plan contributions?**

**In [reference year], what were your total employer pension plan contributions?**

INTERVIEWER: This is the Registered pension plan deduction.  
Line 207

An amount must be entered to continue.

Hard range: minimum: 0  
maximum: 99999995

Soft range: min: 50  
max: 9,995

go to IN\_C170

IN\_C170: If flag: SelfEmp = 1, one or more jobs has  
Clwrk69 = 2 "self-employed"  
(CH\_Q011 = 1 and Hhcf. Clwrk69 = 2) or  
(CH\_Q015 = 2) or (CH\_Q017 = 2) go to IN\_Q170

Otherwise go to IN\_C190

IN\_Q170: **In [reference year], did he pay professional membership dues or professional or malpractice liability insurance premiums?**

**In [reference year], did she pay professional membership dues or professional or malpractice liability insurance premiums?**

**In [reference year], did you pay professional membership dues or professional or malpractice liability insurance premiums?**

1. Yes
2. No
8. Refuse
9. Don't know

If Yes go to IN\_Q175  
Otherwise go to IN\_C190

IN\_Q175: **In [reference year], what was the amount he paid in professional membership dues or professional or malpractice liability insurance premiums?**

**In [reference year], what was the amount she paid in professional membership dues or professional or malpractice liability insurance premiums?**

**In [reference year], what was the amount you paid in professional membership dues or professional or malpractice liability insurance premiums?**

INTERVIEWER: On the tax return, this is 'Annual union, professional or like dues', Line 212. Please subtract the amount for union dues, if any.

Hard range: minimum: 0  
maximum: 99999995

Soft range: minimum: 10 (excluding 0)  
maximum: 9,995

go to IN\_C190

IN\_C190: If flag: UniMem = 1, union member or not a union member but covered by a union contract or collective agreement (CH\_Q260 = 1 or CH\_Q265 = 1) go to IN\_Q190

If flag: UniMem <> 1, not a union member and not covered by a union contract or collective agreement, or refuse, don't know, not stated in Labour interview ((CH\_Q260 = 2 and CH\_Q265 = 2) or (CH\_Q260 = empty/DK/RF)) go to PT\_C001

IN\_Q190: **In [reference year], what was the amount he paid in union dues?**

**In [reference year], what was the amount she paid in union dues?**

**In [reference year], what was the amount you paid in union dues?**

INTERVIEWER: On the tax return, this is 'Annual union, professional or like dues', Line 212. Please

subtract the amount for professional or like dues, if any.

An amount must be entered to continue. Enter 0 if respondent did not receive any income from this source.

Hard range: minimum: 0  
maximum: 99999995

Soft range: minimum: 10 (excluding 0)  
maximum: 2,000

go to PT\_C001

Licprm59 = 0 licence permission question was not asked  
Licprm59 = 1 licence permission was given  
Licprm59 = 2 licence permission was NOT given  
Licprm59 = 3 does not have a driver's licence (age > 15 and < 70)  
Licprm59 = 4 does not have a driver's licence (age > 59)  
Licprm59 = 5 licence permission was withdrawn  
Licprm59 = 6 licence permission was refused and respondent does not want to be asked again  
Licprm59 = 9 not eligible (age < 16)  
Licprm59 = Blank question is asked (joiner)

PT\_C001: If wave = "6" (last interview for panel), go to CAI\_SO  
Otherwise, go to PT\_C002

PT\_C002: If age59 < 80, go to PT\_C003  
Otherwise, go to CAI\_SO

PT\_C003: If R.hinfo.Licprm59 = Blank, 0, 2 or 3, go to PT\_Q001  
Otherwise (1, 4, 5, 6 or 9), go to CAI\_SO

PT\_Q001: **In case there are difficulties reaching [respondent], we would like [his] permission to use provincial drivers' licence files, for the sole purpose of finding [his] new address or telephone number. Does [respondent] give Statistics Canada permission to use these files?**

**In case there are difficulties reaching [respondent], we would like [her] permission to use provincial drivers' licence files, for the sole purpose of finding [her] new address or telephone number. [Does respondent] give Statistics Canada permission to use these files?**

**In case there are difficulties reaching [you], we would like [your] permission to use provincial drivers' licence files, for the sole purpose of finding [your] new address or telephone number. [Do you] give Statistics Canada permission to use these files?**

1. Yes
2. No
3. Does not have a driver's licence
8. Refuse
9. Don't know

go to CAL\_SO

CAI\_SO: INTERVIEWER: This is the end of the component. Return to previously answered question, to make any necessary corrections, or select <Exit> to exit the component.

### **7.1 Income edits**

Soft edits (other than the edits appearing in the questions above) were used during data collection.

#### **Income amount check**

This edit was used during data collection to check the income source amounts entered by the interviewer.

When the amounts entered in the computer are outside the predetermined range, one of two error messages pop up: "**Amount seems too high**" or "**Amount seems too low**".

These messages appear when the amounts entered are outside the soft ranges shown in the questions above, which is determined using data collected in last year's SLID income interview. These ranges exclude approximately 5% of amounts below or above the selected limits.

The interviewer has the option to either 'Suppress' to confirm the value or 'Close' or 'Goto' to enter a new value.

## 7.2 On-line income help (F1)

### **IN\_Q015: Wages and Salaries**

Include amounts called “Other employment income”, such as research grants (net of expenses) and income-maintenance insurance payments.

Exclude retirement and severance pay (report this in Other income, IN\_Q125).

### **IN\_Q020: Farm self-employment NET income**

This is receipts minus operating expenses, depreciation, and capital cost allowances.

If partnership, report only your share.

If incorporated, report this income in Wages and salaries (IN\_Q015) and/or Dividends (IN\_Q035).

Report net rent from farms leased to others in Other investment income, (IN\_Q045).

### **IN\_Q025: Non-farm self-employment**

This is receipts minus operating expenses, depreciation, and capital cost allowances.

If partnership, report only your share.

Include net income from roomers and boarders.

If incorporated, report this income in Wages and salaries (IN\_Q015) and/or Dividends (IN\_Q035).

### **IN\_Q030: Interest**

Include interest from Canadian and foreign sources, and foreign dividends. For joint accounts, report each person’s share separately.

### **IN\_Q035: Dividends**

Report taxable amounts received from Canadian corporations.

### **IN\_Q040: Taxable Capital Gains**

Report as for tax purposes.

### **IN\_Q045: Other investment income**

Include amounts such as:

- \* net rental income,
- \* rents for leased farm land,
- \* regular income from an estate or trust fund,
- \* cash dividends from life insurance policies, etc.

### **IN\_Q050: Child Tax Benefit**

Report only for the parent who receives the cheque.

Examples:

- \* Newfoundland and Labrador Child Benefit
- \* Nova Scotia Child Benefit
- \* New Brunswick Child Tax Benefit and Working Income Supplement
- \* Quebec family allowances
- \* Ontario Child Care Supplement for Working Families
- \* Alberta Family Employment Tax Credit
- \* Saskatchewan Child Benefit
- \* BC family bonus, BC Earned Income Benefit
- \* Yukon Child Benefit
- \* Northwest Territories Child Benefit and Territorial Worker's Supplement
- \* Nunavut Child Benefit and Territorial Worker's Supplement

**IN\_Q065: Canada or Quebec Pension**

Include all types, such as

- \* regular,
- \* disability,
- \* for a surviving spouse or child (death benefit)

**IN\_Q070: Employment Insurance benefits**

Include all types, such as

- \* regular
- \* sickness
- \* maternity/paternity
- \* work sharing
- \* training
- \* or for self-employed fishermen

**IN\_Q075: Social assistance**

Here are some **EXAMPLES** of the names of social assistance programs. There are many social assistance programs in Canada with many different names, depending on the municipality and province. Some are general, and others are for specific needs like child care, housing, health care expenses, or earnings supplements. This list does not reflect all the programs or their exact titles.

*Do not include programs which are specifically listed under question IN\_Q050, Child tax benefits.*

Social assistance program  
Welfare  
Income support program  
Income supplement program  
Day care subsidy  
Child welfare assistance  
Extended Benefits Program (EBP)

Financial Support Program (FSP)  
Residential assistance  
Work and Employment Incentive Program (WEIP)  
Parental Wage Assistance Program (PWA)  
Housing allowance  
LOGIRENTE  
GAINS  
Municipal assistance program  
Child Related Income Support Program (CRISP)  
55 Plus (Manitoba)  
Shelter Allowances for Elderly Renters (SAFER)  
Shelter Allowances for Family Renters (SAFFR)  
Saskatchewan Assistance Plan (SAP)  
Saskatchewan Income Plan (SIP)  
Support for persons with disabilities  
Special needs assistance  
Seniors benefit  
Seniors supplement

**IN\_Q080**

Workers' Compensation benefits from any provincial government compensation plan covering work-related injury or disability

**IN\_Q100**

Here are some examples of Income from Government Sources:

- Payments for individuals in fishing industry
- Training allowance from federal or provincial governments
- Cash property tax reductions and rebates
- Labour adjustment benefits
- Regular payments from provincial automobile insurance plans
- Quebec Maternity Allowance

**IN\_Q115: RRSP withdrawals**

Exclude tax-free withdrawals used for purchasing a home.

**IN\_Q125: Other income**

Exclude:

- \* proceeds from the sale of property, businesses, financial assets or personal belongings;
- \* income tax refunds
- \* loans received
- \* loans repaid to you as the lender
- \* refunds of contributions to work-related pension plans

**IN\_Q145: Income Tax Paid on income (federal, provincial and territorial)**

All provinces except Quebec:

- Add lines 420 and 428.

Quebec residents only:

- Add together:
  - Line 420 of federal tax return.
  - Line 450 of Quebec tax return
- Then subtract:
  - Line 445 (QPP contributions)
  - Line 446 (Contribution to health services fund)
  - Line 447 (Premium payable under the Quebec prescription drug insurance plan)

If they did not file a return or did not calculate their taxes, ask them to report their best estimate.

FOR INFORMATION ONLY